

2010



# Fact Book

## San Diego Community College District



*Prepared by:*  
Office of Institutional Research and Planning  
September 2010

# SDCCD Fact Book 2010: Table of Contents

Overview .....	1	By Gender.....	35
<b>Section I. Headcount and Student Characteristics</b> .....	2	By Ethnicity.....	36
Section Overview .....	3	By Age.....	37
Overall .....	4	Annual GPA	
Gender .....	5	Overall .....	38
Ethnicity .....	6	By Gender.....	39
Age .....	7	By Ethnicity.....	40
Enrollment Status.....	8	By Age.....	41
Educational Objective.....	9	Annual Awards Conferred	
Primary Language .....	11	Overall .....	42
Prior Education Level.....	12	By Gender.....	43
Service Area of Residence.....	13	By Ethnicity.....	48
Units Attempted by Units Earned .....	14	By Age.....	55
First Generation.....	16	Annual Transfer	
Income Level.....	17	Overall .....	61
DSPS.....	18	By Gender.....	62
EOPS .....	19	By Ethnicity.....	63
<b>Section II. Fall to Spring Term Persistence Rates</b> .....	20	By Age.....	64
Section Overview .....	21	CSU-UC/Private/Out-of-State .....	65
Overall .....	22	CSU/UC .....	66
By Gender.....	23	Institution Type (Private vs. Public).....	67
By Ethnicity.....	24	<b>Section IV. Productivity and Efficiency</b> .....	68
By Age.....	26	Section Overview .....	69
<b>Section III. Student Outcomes</b> .....	28	Annual FTES.....	70
Section Overview .....	29	Enrollments: Online and On Campus.....	71
Annual Success Rates		Fill Rates .....	73
Overall .....	30	Load .....	75
By Gender.....	31	<b>Section V. Human Resources</b> .....	76
By Ethnicity.....	32	Section Overview .....	77
By Age.....	33	Fall 2009 Employees by Gender and Ethnicity .....	78
Annual Retention Rates		<b>Section VI. Concluding Remarks</b> .....	80
Overall .....	34		

## **SDCCD Fact Book 2010: Overview**

---

This Fact Book is a publication of the Office of Institutional Research and Planning for the San Diego Community College District. It is designed to serve the information needs of the community with a primary focus on student enrollment, demographics, and outcomes.

The Fact Book is a rich source of districtwide trend information that may be used for planning and decision making. The book contains the following five sections:

- 1) **Headcount and Student Characteristics.** Provides information on student demographic characteristics (e.g., age, ethnicity, and educational objective) over five years.
- 2) **Term Persistence Rates.** Provides information about first-time to college students who complete a fall term and enroll in the subsequent spring term. The information is also reported by demographic characteristics of interest.
- 3) **Student Outcomes.** Provides information on students' successful course completion rates, retention rates, GPA, awards conferred, and transfer volume. All of the information is provided in summary form, as well as demographic characteristics of interest.
- 4) **Productivity and Efficiency.** Provides information on annual FTES, enrollment and fill rates, and Load (WSCH/FTEF).
- 5) **Human Resources.** Provides information on the number of employees by ethnicity, gender and employee classification.

Each section contains the following benchmarks: 1) The percentage change over the five year period being reported, 2) The collegewide average and 3) The "Districtwide" (includes Continuing Education) or "All Colleges" in the district averages (excludes Continuing Education).

**Section I**  
**Headcount & Student Characteristics**

## **SDCCD Section I: Headcount and Student Characteristics**

---

This section of the Fact Book contains student headcount by various student characteristics. The headcount figures are single student counts (unduplicated headcount) based on official census counts at the end of the semester (all students who dropped or never attended prior to the class census date were not included). The headcount information is reported over a period of five years to analyze trends and establish benchmarks.

Headcount information is reported by the following segments:

- 1) Overall (Colleges and Continuing Education)
- 2) Gender (Colleges and Continuing Education)
- 3) Ethnicity (Colleges and Continuing Education)
- 4) Age (Colleges and Continuing Education)
- 5) Educational Objective (Colleges)
- 6) Enrollment Status (Colleges)
- 7) Primary Language (Colleges)
- 8) Prior Education Level (Colleges)
- 9) Service Area of Residence (Colleges and Continuing Education)
- 10) Units Attempted by Units Earned (Colleges)
- 11) First Generation (Colleges)
- 12) Income Level (Colleges and Continuing Education)
- 13) DSPPS (Colleges)
- 14) EOPS (Colleges)

## SDCCD Section I: Headcount and Student Characteristics

**Overall Headcount:** Unduplicated student headcount showed a 5% increase, from 44,172 in Summer 2005 to 46,578 in Summer 2009 with a peak in Summer 2008 to 51,110. Unduplicated headcount showed neither an increase nor a decrease between Fall 2005 and Fall 2009 but peaked in 2008 then dropped in 2009. Finally, unduplicated student headcount for the district showed a 2% decrease between Spring 2006 and Spring 2010.

Figure 1.1. SDCCD Overall Headcount (Fall)

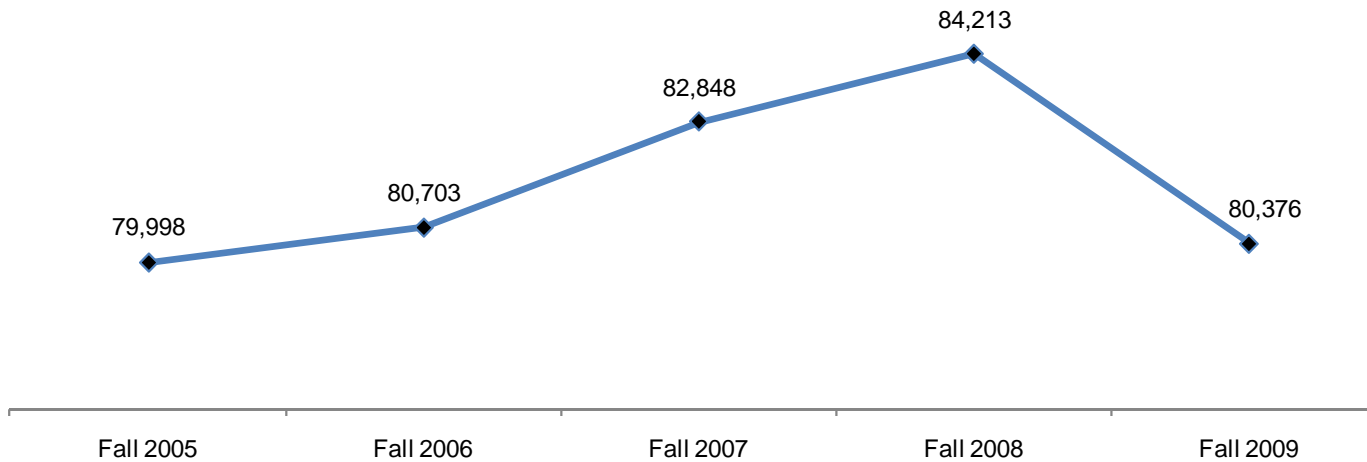


Table 1.1.1. SDCCD Overall Headcount (Summer)

	Summer 2005	Summer 2006	Summer 2007	Summer 2008	Summer 2009	% Change Summer 05-09
<b>Total</b>	44,172	46,324	50,099	51,110	46,578	5%

Source: SDCCD Information System

Table 1.1.2. SDCCD Overall Headcount (Fall)

	Fall 2005	Fall 2006	Fall 2007	Fall 2008	Fall 2009	% Change Fall 05-09
<b>Total</b>	79,998	80,703	82,848	84,213	80,376	0%

Source: SDCCD Information System

Table 1.1.3. SDCCD Overall Headcount (Spring)

	Spring 2006	Spring 2007	Spring 2008	Spring 2009	Spring 2010	% Change Spring 06-10
<b>Total</b>	81,106	83,302	84,167	84,554	79,516	-2%

Source: SDCCD Information System

## SDCCD Section I: Headcount and Student Characteristics

**Headcount by Gender:** On average, the female student headcount (55%) was higher than their male student counterpart (43%), which has remained fairly consistent between Fall 2005 and Fall 2009. Both male and female student headcounts increased between Fall 2005 and Fall 2009, which paralleled the districtwide student population trend.

Figure 1.2. SDCCD Headcount by Gender

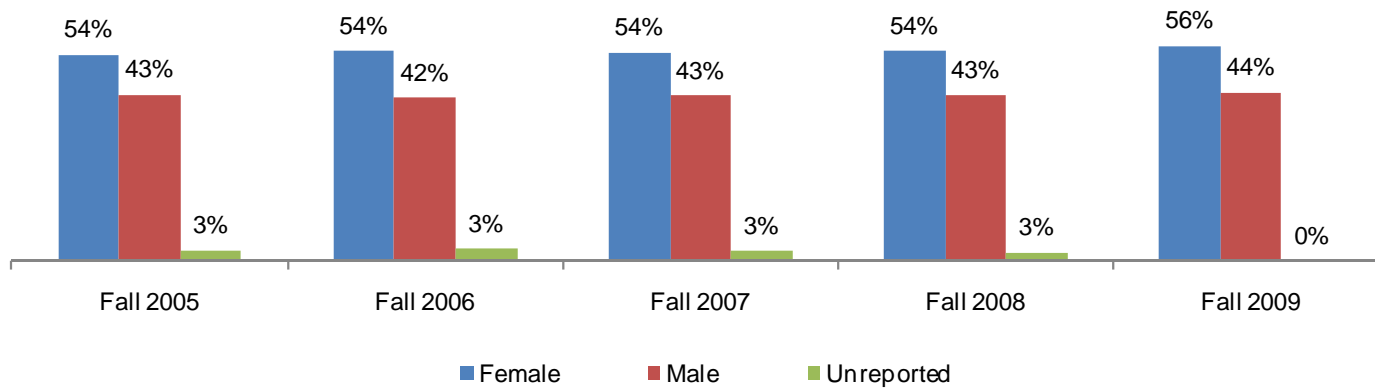


Table 1.2. SDCCD Headcount by Gender

	Fall 2005		Fall 2006		Fall 2007		Fall 2008		Fall 2009		% Change Fall 05-09	Districtwide Average Fall 05-09
Female	42,861	54%	43,912	54%	45,000	54%	45,860	54%	44,991	56%	5%	55%
Male	34,657	43%	34,123	42%	35,576	43%	36,223	43%	35,251	44%	1%	43%
Unreported	2,480	3%	2,668	3%	2,272	3%	2,130	3%	134	0%	-95%	2%
<b>Total</b>	<b>79,998</b>	<b>100%</b>	<b>80,703</b>	<b>100%</b>	<b>82,848</b>	<b>100%</b>	<b>84,213</b>	<b>100%</b>	<b>80,376</b>	<b>100%</b>	<b>0%</b>	<b>100%</b>

## SDCCD Section I: Headcount and Student Characteristics

**Headcount by Ethnicity:** The ethnic groups that comprised the largest headcounts between Fall 2005 and Fall 2009 were White students (35%), Latino students (28%), and Asian/Pacific Islander students (12%). Districtwide, the students that were categorized as 'Other' ethnicities increased 35% in contrast to the Filipino student population, which declined 12% between Fall 2005 and Fall 2009.

Figure 1.3. SDCCD Headcount by Ethnicity

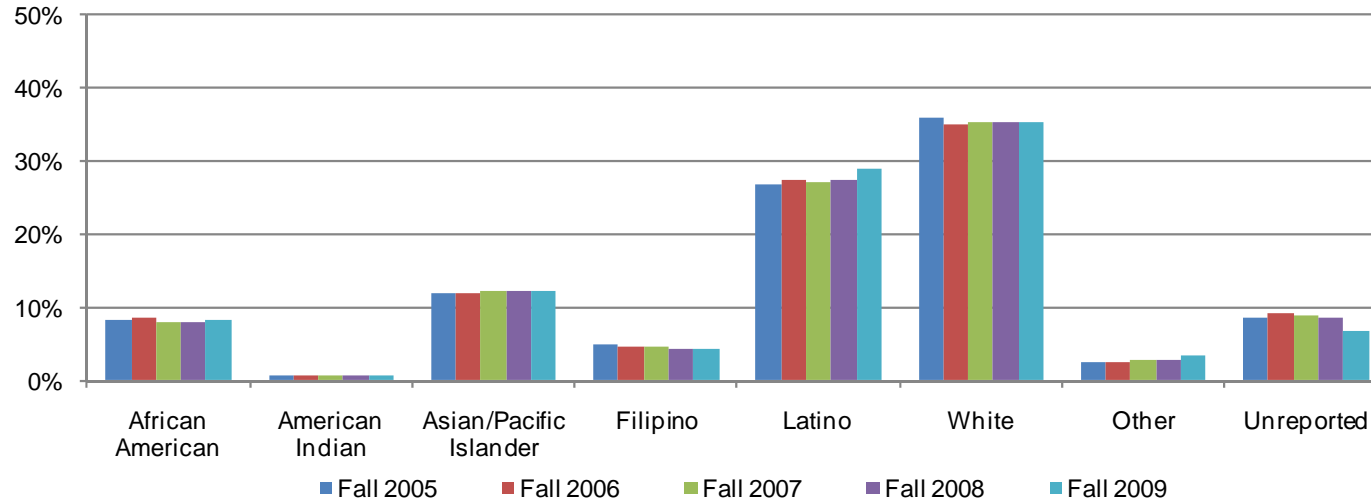


Table 1.3. SDCCD Headcount by Ethnicity

	Fall 2005		Fall 2006		Fall 2007		Fall 2008		Fall 2009		% Change Fall 05-09	Districtwide Average Fall 05-09
African American	6,684	8%	6,848	8%	6,695	8%	6,674	8%	6,586	8%	-2%	8%
American Indian	658	1%	622	1%	703	1%	665	1%	623	1%	-6%	1%
Asian/Pacific Islander	9,646	12%	9,698	12%	10,255	12%	10,415	12%	9,884	12%	2%	12%
Filipino	3,888	5%	3,791	5%	3,773	5%	3,732	4%	3,447	4%	-12%	5%
Latino	21,498	27%	22,158	27%	22,604	27%	23,135	27%	23,237	29%	8%	28%
White	28,695	36%	28,154	35%	29,239	35%	29,846	35%	28,362	35%	-2%	35%
Other	2,088	3%	2,081	3%	2,264	3%	2,359	3%	2,820	4%	35%	3%
Unreported	6,841	9%	7,351	9%	7,315	9%	7,387	9%	5,417	7%	-21%	8%
<b>Total</b>	<b>79,998</b>	<b>100%</b>	<b>80,703</b>	<b>100%</b>	<b>82,848</b>	<b>100%</b>	<b>84,213</b>	<b>100%</b>	<b>80,376</b>	<b>100%</b>	<b>0%</b>	<b>100%</b>

Source: SDCCD Information System



## SDCCD Section I: Headcount and Student Characteristics

**Headcount by Age:** Between Fall 2005 and Fall 2009, the districtwide age groups with the largest headcounts, on average, were students between ages 18 to 24 years old (36%), students age 50 and older (19%), and students ages 30-39 (16%). Students under 18 years old increased 51%, while students between ages 40 and 49 years old decreased 3% from Fall 2005 to Fall 2009.

Figure 1.4. SDCCD Headcount by Age

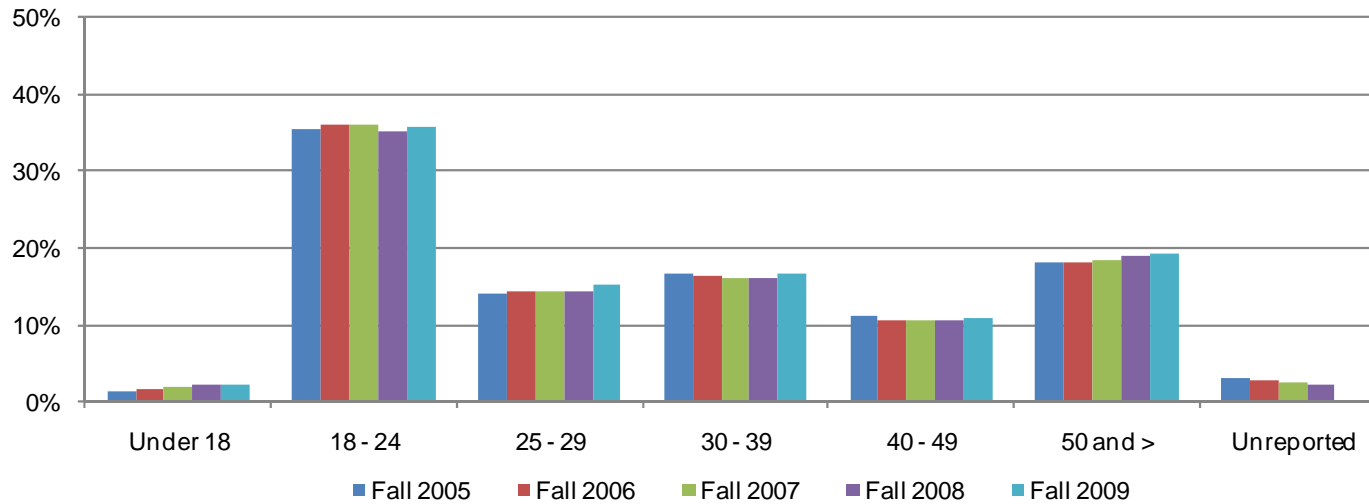


Table 1.4. SDCCD Headcount by Age

	Fall 2005		Fall 2006		Fall 2007		Fall 2008		Fall 2009		% Change Fall 05-09	Districtwide Average Fall 05-09
Under 18	1,127	1%	1,264	2%	1,561	2%	1,799	2%	1,697	2%	51%	2%
18 - 24	28,400	36%	29,155	36%	29,803	36%	29,733	35%	28,633	36%	1%	36%
25 - 29	11,358	14%	11,630	14%	12,003	14%	12,161	14%	12,295	15%	8%	15%
30 - 39	13,281	17%	13,297	16%	13,310	16%	13,569	16%	13,449	17%	1%	16%
40 - 49	8,924	11%	8,560	11%	8,779	11%	8,921	11%	8,672	11%	-3%	11%
50 and >	14,462	18%	14,637	18%	15,315	18%	16,085	19%	15,622	19%	7%	19%
Unreported	2,446	3%	2,160	3%	2,077	3%	1,945	2%	8	0%	-100%	2%
<b>Total</b>	<b>79,998</b>	<b>100%</b>	<b>80,703</b>	<b>100%</b>	<b>82,848</b>	<b>100%</b>	<b>84,213</b>	<b>100%</b>	<b>80,376</b>	<b>100%</b>	<b>0%</b>	<b>100%</b>

Source: SDCCD Information System

## SDCCD Section I: Headcount and Student Characteristics

**Headcount by Enrollment Status:** On average, 61% of the general student population for all colleges in the district comprised continuing students. The number of current high school students who were enrolled in the district colleges increased 44%, from 1,356 students in Fall 2005 to 1,952 in Fall 2009. However, the number of first-time transfer students who were enrolled in the district colleges decreased 9%, from 5,837 in Fall 2005 to 5,296 in Fall 2009.

Figure 1.5. All Colleges Headcount by Enrollment Status

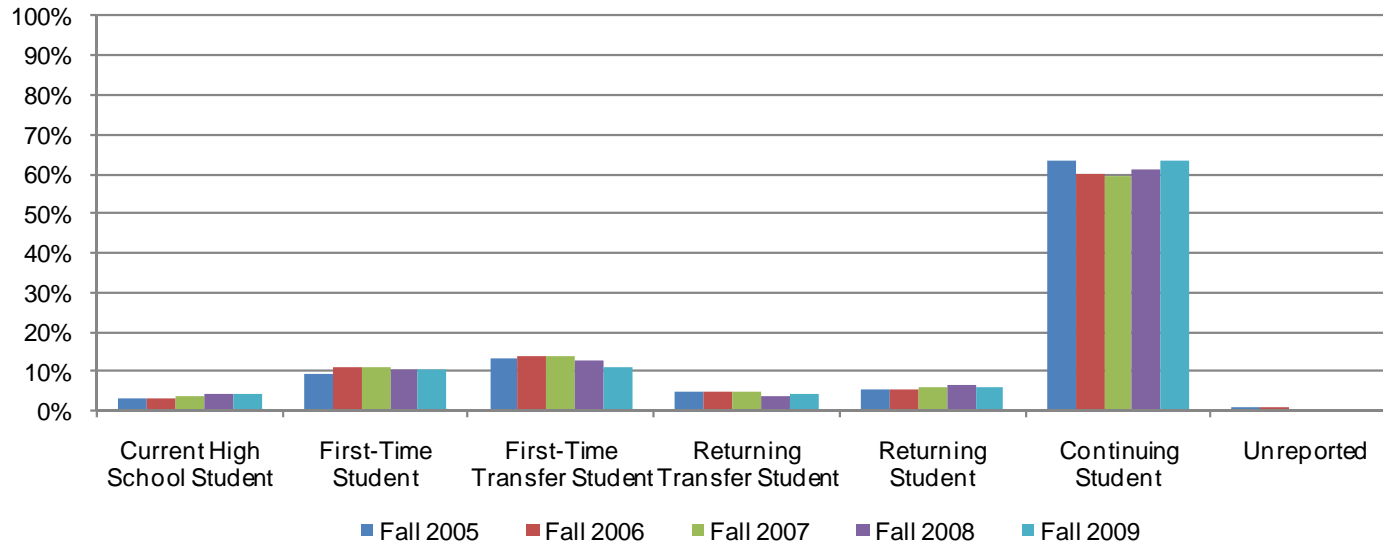


Table 1.5. All Colleges Headcount by Enrollment Status

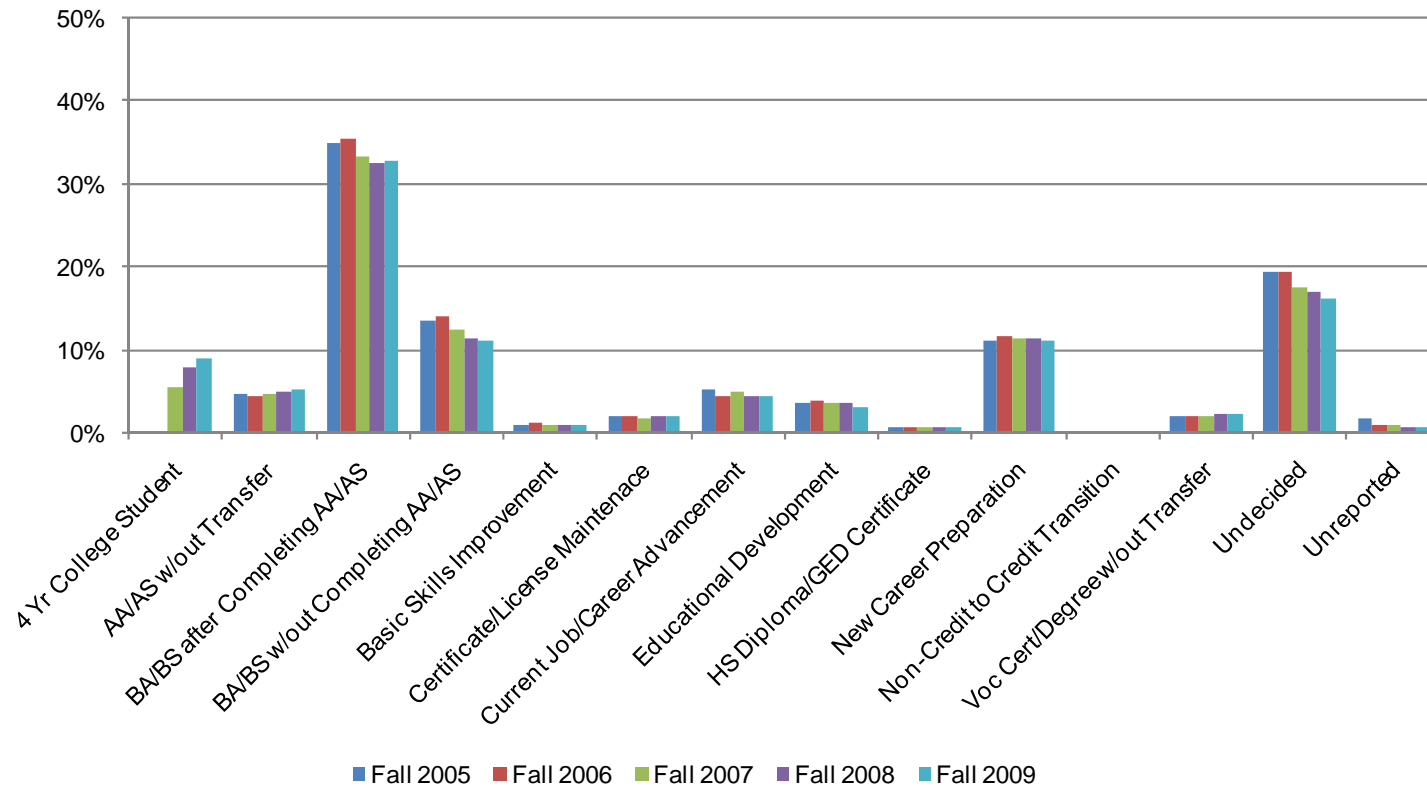
	Fall 2005		Fall 2006		Fall 2007		Fall 2008		Fall 2009		% Change Fall 05-09	All Colleges Average Fall 05-09
Current High School Student	1,356	3%	1,510	3%	1,908	4%	2,153	5%	1,952	4%	44%	4%
First-Time Student	4,042	9%	4,992	11%	5,182	11%	5,058	11%	5,099	11%	26%	11%
First-Time Transfer Student	5,837	13%	6,218	14%	6,584	14%	6,179	13%	5,296	11%	-9%	13%
Returning Transfer Student	2,127	5%	2,082	5%	2,282	5%	1,900	4%	2,047	4%	-4%	6%
Returning Student	2,403	5%	2,536	6%	2,877	6%	3,105	7%	2,799	6%	16%	5%
Continuing Student	27,800	63%	26,601	60%	27,730	59%	28,971	61%	30,324	64%	9%	61%
Unreported	398	1%	338	1%	172	0%	188	0%	132	0%	-67%	1%
<b>Total</b>	<b>43,963</b>	<b>100%</b>	<b>44,277</b>	<b>100%</b>	<b>46,735</b>	<b>100%</b>	<b>47,554</b>	<b>100%</b>	<b>47,649</b>	<b>100%</b>	<b>8%</b>	<b>100%</b>

Source: SDCCD Information System

## SDCCD Section I: Headcount and Student Characteristics

**Headcount by Educational Objective:** Almost half of the general student population for all colleges in the district (46%) selected transfer to obtain a BA/BS with or without completing an AA/AS degree as their educational objective during the five terms being reported. Between Fall 2005 and Fall 2009, the educational objectives that made the most gain in popularity were to obtain a AA/AS degree without transfer (increased by 23%) and Vocational certificate/degree without transfer (increased by 22%). In contrast, students who selected transfer to obtain a BA/BS without completing an AA/AS degree and Basic Skills improvement as educational objectives, decreased 11% and 12%, respectively, among the general student population for all colleges in the district.

Figure 1.6. All Colleges Headcount by Educational Objective



## SDCCD Section I: Headcount and Student Characteristics

Table 1.6. All Colleges Headcount by Educational Objective

	Fall 2005		Fall 2006		Fall 2007		Fall 2008		Fall 2009		% Change Fall 05-09	All Colleges Average Fall 05-09
4 Yr College Student	0	0%	0	0%	2,592	6%	3,705	8%	4,329	9%	---	---
AA/AS w/out Transfer	2,066	5%	2,016	5%	2,196	5%	2,344	5%	2,551	5%	23%	5%
BA/BS after Completing AA/AS	15,398	35%	15,666	35%	15,608	33%	15,452	32%	15,670	33%	2%	34%
BA/BS w/out Completing AA/AS	5,917	13%	6,218	14%	5,781	12%	5,414	11%	5,245	11%	-11%	12%
Basic Skills Improvement	463	1%	504	1%	447	1%	423	1%	408	1%	-12%	1%
Certificate/License Maintenance	916	2%	884	2%	870	2%	945	2%	989	2%	8%	2%
Current Job/Career Advancement	2,275	5%	1,988	4%	2,326	5%	2,168	5%	2,116	4%	-7%	5%
Educational Development	1,597	4%	1,692	4%	1,719	4%	1,738	4%	1,422	3%	-11%	4%
HS Diploma/GED Certificate	300	1%	311	1%	323	1%	351	1%	322	1%	7%	1%
New Career Preparation	4,863	11%	5,113	12%	5,304	11%	5,425	11%	5,346	11%	10%	11%
Non-Credit to Credit Transition	0	0%	0	0%	41	0%	48	0%	60	0%	---	---
Voc Cert/Degree w/out Transfer	935	2%	931	2%	968	2%	1,084	2%	1,143	2%	22%	2%
Undecided	8,497	19%	8,543	19%	8,170	17%	8,129	17%	7,743	16%	-9%	18%
Unreported	736	2%	411	1%	390	1%	328	1%	305	1%	-59%	1%
<b>Total</b>	<b>43,963</b>	<b>100%</b>	<b>44,277</b>	<b>100%</b>	<b>46,735</b>	<b>100%</b>	<b>47,554</b>	<b>100%</b>	<b>47,649</b>	<b>100%</b>	<b>8%</b>	<b>100%</b>

Source: SDCCD Information System

Note: 4 Yr College Student and Non-Credit to Credit Transition was not an option prior to Fall 2007.

## SDCCD Section I: Headcount and Student Characteristics

**Headcount by Primary Language:** On average, 93% of the general student population for all colleges in the district spoke English as their primary language. Both students who reported speaking English as their primary language and those who spoke a language other than English increased between Fall 2005 and Fall 2009 (9% & 8%, respectively).

Figure 1.7. All Colleges Headcount by Primary Language

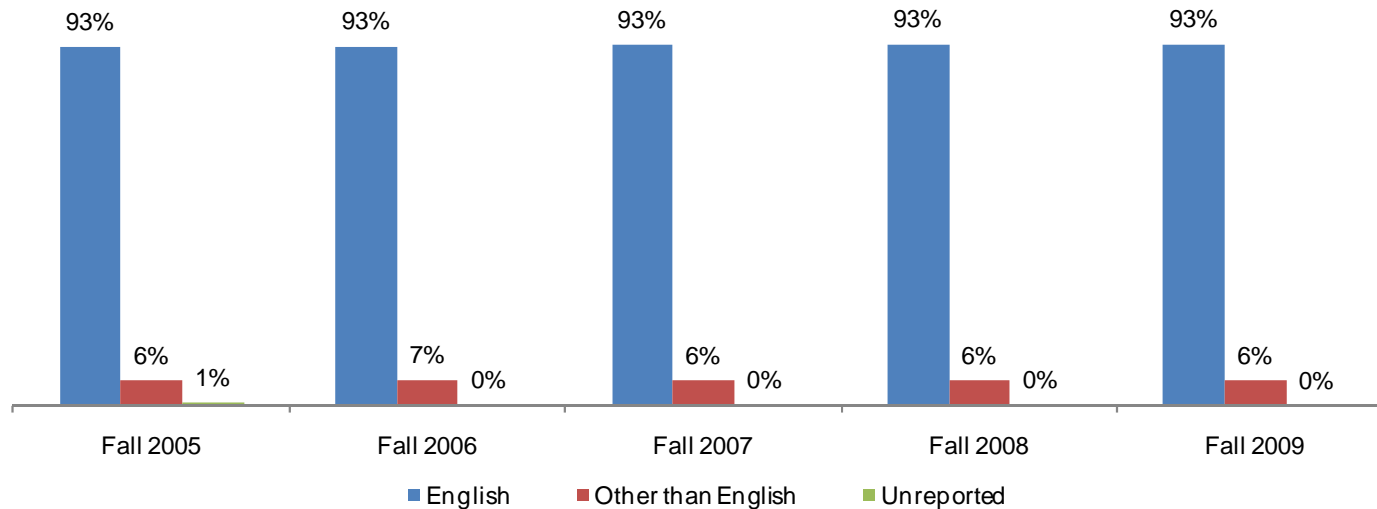


Table 1.7. All Colleges Headcount by Primary Language

	Fall 2005		Fall 2006		Fall 2007		Fall 2008		Fall 2009		% Change Fall 05-09	All Colleges Average Fall 05-09
English	40,766	93%	41,240	93%	43,631	93%	44,453	93%	44,547	93%	9%	93%
Other than English	2,856	6%	2,920	7%	3,028	6%	3,062	6%	3,093	6%	8%	6%
Unreported	341	1%	117	0%	76	0%	39	0%	9	0%	-97%	0%
<b>Total</b>	<b>43,963</b>	<b>100%</b>	<b>44,277</b>	<b>100%</b>	<b>46,735</b>	<b>100%</b>	<b>47,554</b>	<b>100%</b>	<b>47,649</b>	<b>100%</b>	<b>8%</b>	<b>100%</b>

Source: SDCCD Information System

# SDCCD Section I: Headcount and Student Characteristics

**Headcount by Prior Education Level:** Between Fall 2005 and Fall 2009, a majority of the general student population for all colleges in the district reported they were high school graduates (67%) on average. Both students who were special admit/K-12 and students who achieved a GED/High School certificate increased 39% and 19%, respectively, between Fall 2005 and Fall 2009. On average, 12% of the district colleges general student population had a bachelor's degree or higher.

Figure 1.8. All Colleges Headcount by Prior Education Level

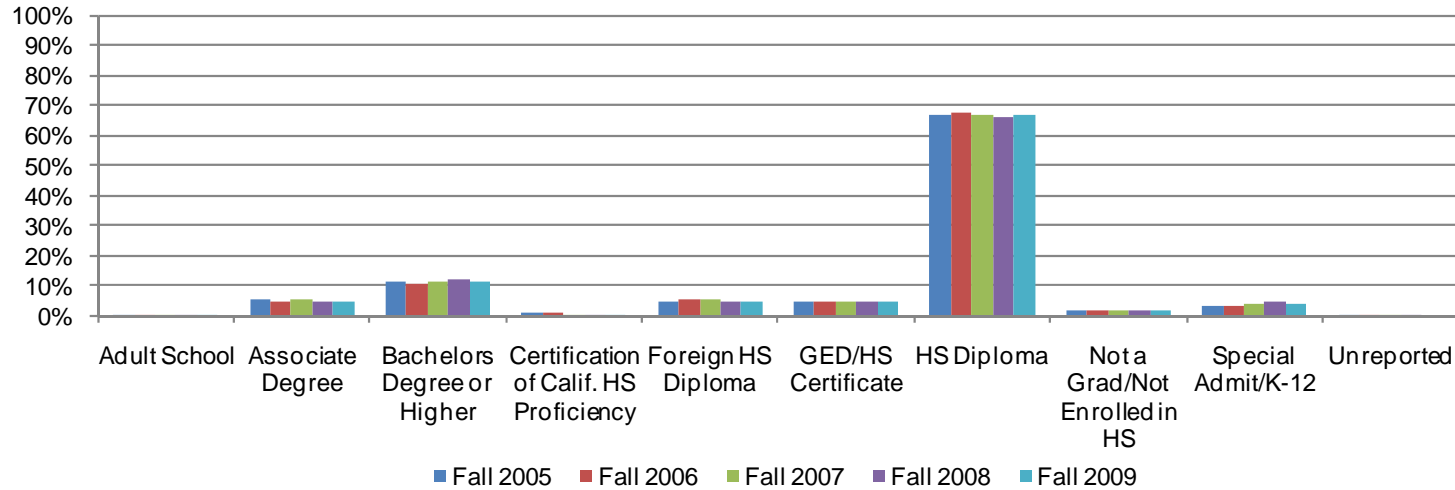


Table 1.8. All Colleges Headcount by Prior Education Level

	Fall 2005		Fall 2006		Fall 2007		Fall 2008		Fall 2009		% Change Fall 05-09	All Colleges Average Fall 05-09
Adult School	113	0%	101	0%	94	0%	123	0%	129	0%	14%	0%
Associate Degree	2,522	6%	2,217	5%	2,436	5%	2,384	5%	2,366	5%	-6%	5%
Bachelors Degree or Higher	4,904	11%	4,912	11%	5,421	12%	5,750	12%	5,508	12%	12%	12%
Certification of Calif. HS Proficiency	351	1%	342	1%	304	1%	347	1%	351	1%	0%	1%
Foreign HS Diploma	2,248	5%	2,371	5%	2,471	5%	2,371	5%	2,420	5%	8%	5%
GED/HS Certificate	1,973	4%	2,018	5%	2,162	5%	2,203	5%	2,349	5%	19%	5%
HS Diploma	29,502	67%	29,994	68%	31,087	67%	31,418	66%	31,777	67%	8%	67%
Not a Grad/Not Enrolled in HS	750	2%	748	2%	835	2%	826	2%	845	2%	13%	2%
Special Admit/K-12	1,366	3%	1,503	3%	1,882	4%	2,117	4%	1,904	4%	39%	4%
Unreported	234	1%	71	0%	43	0%	15	0%	0	0%	-100%	0%
<b>Total</b>	<b>43,963</b>	<b>100%</b>	<b>44,277</b>	<b>100%</b>	<b>46,735</b>	<b>100%</b>	<b>47,554</b>	<b>100%</b>	<b>47,649</b>	<b>100%</b>	<b>8%</b>	<b>100%</b>

Source: SDCCD Information System

## SDCCD Section I: Headcount and Student Characteristics

**Headcount by Service Area of Residence:** Between Fall 2005 and Fall 2009, on average, 36% of the general student population for all district colleges resided within the City College service area, 23% of the general student population for all district colleges resided within the Mesa College service area and 10% of the general student population for all district colleges resided within the Miramar College service area. Twenty-eight percent of students lived outside of all of the district college service areas.

Figure 1.9. SDCCD Headcount by Service Area of Residence

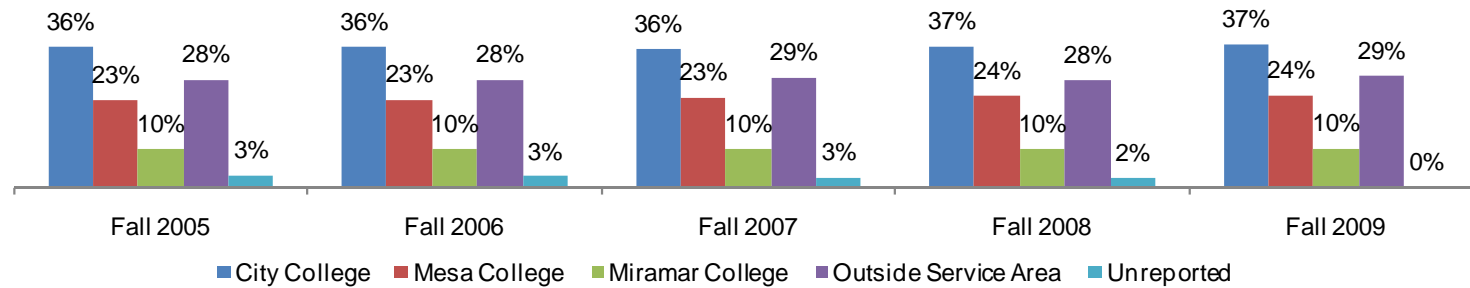


Table 1.9. SDCCD Headcount by Service Area of Residence

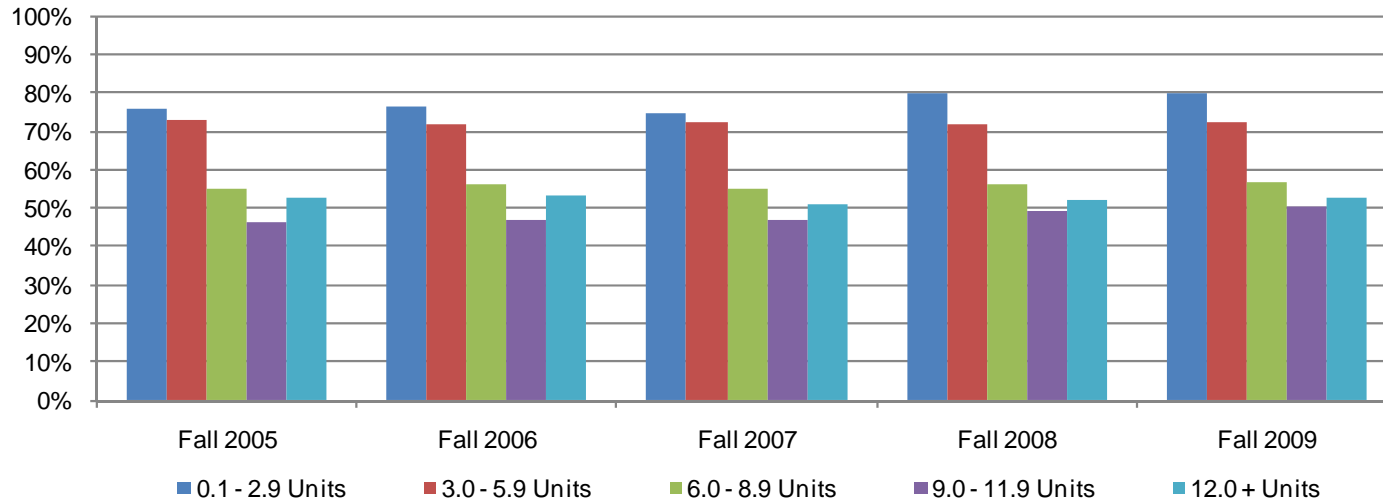
	Fall 2005		Fall 2006		Fall 2007		Fall 2008		Fall 2009		% Change Fall 05-09	Districtwide Average Fall 05-09
City College	29,162	36%	29,436	36%	29,693	36%	30,775	37%	29,823	37%	2%	36%
Mesa College	18,153	23%	18,475	23%	19,301	23%	19,943	24%	19,183	24%	5%	23%
Miramar College	7,890	10%	8,022	10%	8,156	10%	8,221	10%	8,098	10%	2%	10%
Outside Service Area	22,354	28%	22,615	28%	23,626	29%	23,336	28%	23,272	29%	4%	28%
Unreported	2,439	3%	2,155	3%	2,072	3%	1,938	2%	0	0%	-100%	2%
<b>Total</b>	<b>79,998</b>	<b>100%</b>	<b>80,703</b>	<b>100%</b>	<b>82,848</b>	<b>100%</b>	<b>84,213</b>	<b>100%</b>	<b>80,376</b>	<b>100%</b>	<b>0%</b>	<b>100%</b>

Source: SDCCD Information System

## SDCCD Section I: Headcount and Student Characteristics

**Headcount by Units Attempted by Units Earned:** Table 1.10 shows the interplay between units attempted (in rows) and units earned (in columns). The greatest proportion of students who attempted and earned units were those in the 0.1-2.9 unit range on average (77%). The least proportion of students who attempted and earned units were those in the 9.0-11.9 unit range on average (48%). Students who attempted and earned between 9.0-11.9 units increased 32%, while students who attempted and earned between 0.1-2.9 units decreased 11% between Fall 2005 and Fall 2009.

Figure 1.10. All Colleges Headcount by Units Attempted by Units Earned





# SDCCD Section I: Headcount and Student Characteristics

Table 1.10. All Colleges Headcount by Units Attempted by Units Earned

		Units Earned						
		0 Units	0.1 - 2.9 Units	3.0 - 5.9 Units	6.0 - 8.9 Units	9.0 - 11.9 Units	12.0 + Units	
Units Attempted	Fall 2005	0.1 - 2.9 Units	24%	<b>76%</b>				
		3.0 - 5.9 Units	26%	1%	<b>73%</b>			
		6.0 - 8.9 Units	22%	2%	22%	<b>55%</b>		
		9.0 - 11.9 Units	17%	1%	15%	20%	<b>46%</b>	
		12.0 + Units	9%	1%	8%	12%	18%	<b>52%</b>
	Fall 2006	0.1 - 2.9 Units	24%	<b>76%</b>				
		3.0 - 5.9 Units	27%	1%	<b>72%</b>			
		6.0 - 8.9 Units	21%	2%	21%	<b>56%</b>		
		9.0 - 11.9 Units	17%	1%	14%	21%	<b>47%</b>	
		12.0 + Units	9%	1%	8%	12%	17%	<b>53%</b>
	Fall 2007	0.1 - 2.9 Units	25%	<b>75%</b>				
		3.0 - 5.9 Units	26%	1%	<b>73%</b>			
		6.0 - 8.9 Units	21%	2%	23%	<b>55%</b>		
		9.0 - 11.9 Units	16%	1%	14%	21%	<b>47%</b>	
		12.0 + Units	9%	1%	8%	12%	19%	<b>51%</b>
	Fall 2008	0.1 - 2.9 Units	20%	<b>80%</b>				
		3.0 - 5.9 Units	27%	2%	<b>72%</b>			
		6.0 - 8.9 Units	20%	2%	22%	<b>56%</b>		
		9.0 - 11.9 Units	15%	2%	14%	20%	<b>49%</b>	
		12.0 + Units	8%	1%	8%	13%	18%	<b>52%</b>
Fall 2009	0.1 - 2.9 Units	20%	<b>80%</b>					
	3.0 - 5.9 Units	26%	1%	<b>72%</b>				
	6.0 - 8.9 Units	19%	2%	22%	<b>57%</b>			
	9.0 - 11.9 Units	14%	1%	14%	20%	<b>50%</b>		
	12.0 + Units	8%	1%	8%	13%	18%	<b>53%</b>	
% Change Fall 05-09		--	-11%	3%	17%	32%	13%	
College Average Fall 05-09		--	77%	72%	56%	48%	52%	

Source: SDCCD Information System

Note: Tutoring and non-graded courses were excluded. Percent change was based on counts.

## SDCCD Section I: Headcount and Student Characteristics

**Headcount by First Generation:** Between Fall 2005 and Fall 2009, on average, exactly one-quarter of the students reported being first generation college students (25%). Both groups of students, those who were and those who were not first generation college students, displayed an increase in headcount between Fall 2005 and Fall 2009 (20% & 9%, respectively).

Figure 1.11. All Colleges Headcount by First Generation

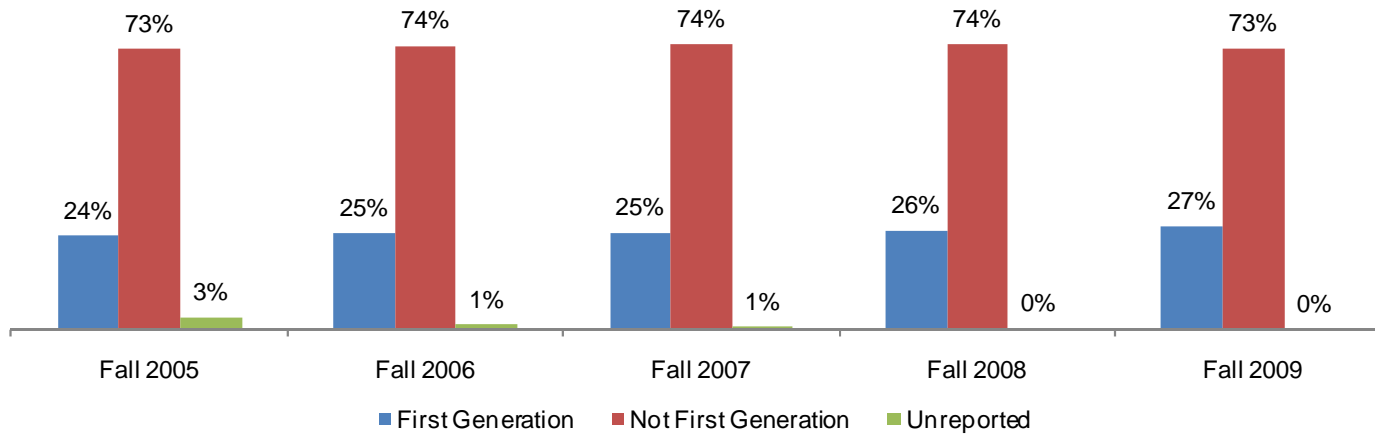


Table 1.11. All Colleges Headcount by First Generation

	Fall 2005		Fall 2006		Fall 2007		Fall 2008		Fall 2009		% Change Fall 05-09	All Colleges Average Fall 05-09
First Generation	10,633	24%	11,121	25%	11,829	25%	12,217	26%	12,750	27%	20%	25%
Not First Generation	31,909	73%	32,564	74%	34,538	74%	35,123	74%	34,760	73%	9%	73%
Unreported	1,421	3%	592	1%	368	1%	214	0%	139	0%	-90%	1%
<b>Total</b>	<b>43,963</b>	<b>100%</b>	<b>44,277</b>	<b>100%</b>	<b>46,735</b>	<b>100%</b>	<b>47,554</b>	<b>100%</b>	<b>47,649</b>	<b>100%</b>	<b>8%</b>	<b>100%</b>

Source: SDCCD Information System

## SDCCD Section I: Headcount and Student Characteristics

**Headcount by Income Level:** Between Fall 2005 and Fall 2009, nearly one-quarter (23%) of the districtwide general student population reported making \$33,000 or more a year on average. The number of students who reported making between \$0-2,999 a year on average increased 55% between Fall 2005 and 2009. It should be noted that exactly one-fifth of the students did not report their income level. Consequently, the data may not be representative of the actual income level of students enrolled within the district.

Figure 1.12. SDCCD Headcount by Income Level

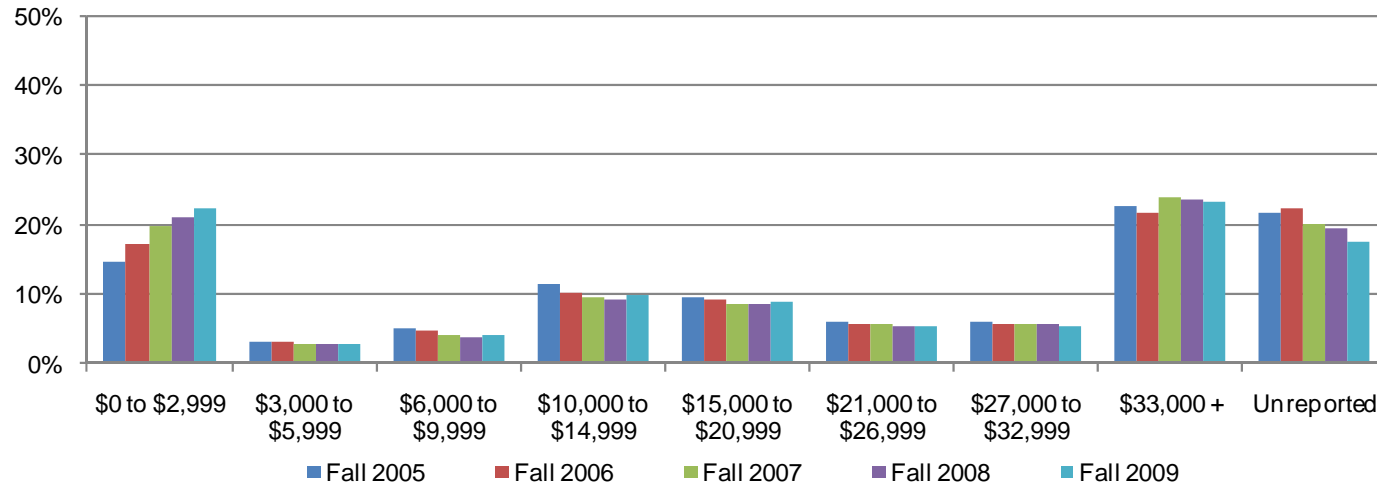


Table 1.12. SDCCD Headcount by Income Level

	Fall 2005		Fall 2006		Fall 2007		Fall 2008		Fall 2009		% Change Fall 05-09	Districtwide Average Fall 05-09
\$0 to \$2,999	11,654	15%	13,792	17%	16,376	20%	17,811	21%	18,034	22%	55%	19%
\$3,000 to \$5,999	2,515	3%	2,510	3%	2,347	3%	2,308	3%	2,348	3%	-6%	3%
\$6,000 to \$9,999	3,981	5%	3,874	5%	3,426	4%	3,233	4%	3,322	4%	-16%	4%
\$10,000 to \$14,999	9,055	11%	8,335	10%	7,832	9%	7,844	9%	7,830	10%	-13%	10%
\$15,000 to \$20,999	7,741	10%	7,384	9%	7,201	9%	7,305	9%	7,146	9%	-8%	9%
\$21,000 to \$26,999	4,898	6%	4,573	6%	4,614	6%	4,542	5%	4,347	5%	-11%	6%
\$27,000 to \$32,999	4,890	6%	4,638	6%	4,845	6%	4,815	6%	4,469	6%	-9%	6%
\$33,000 +	17,998	22%	17,528	22%	19,693	24%	19,977	24%	18,745	23%	4%	23%
Unreported	17,266	22%	18,069	22%	16,514	20%	16,378	19%	14,135	18%	-18%	20%
<b>Total</b>	<b>79,998</b>	<b>100%</b>	<b>80,703</b>	<b>100%</b>	<b>82,848</b>	<b>100%</b>	<b>84,213</b>	<b>100%</b>	<b>80,376</b>	<b>100%</b>	<b>0%</b>	<b>100%</b>

Source: SDCCD Information System

## SDCCD Section I: Headcount and Student Characteristics

**Headcount by Disability Support Programs and Services (DSPS):** On average, 97% of the general student population for all colleges in the district had not received any type of disability support services between Fall 2005 and Fall 2009. Moreover, the number of students who received and had not received disability services increased 12% and 9%, respectively, between Fall 2005 and Fall 2009.

Figure 1.13. All Colleges Headcount by Disability Support Programs and Services (DSPS)

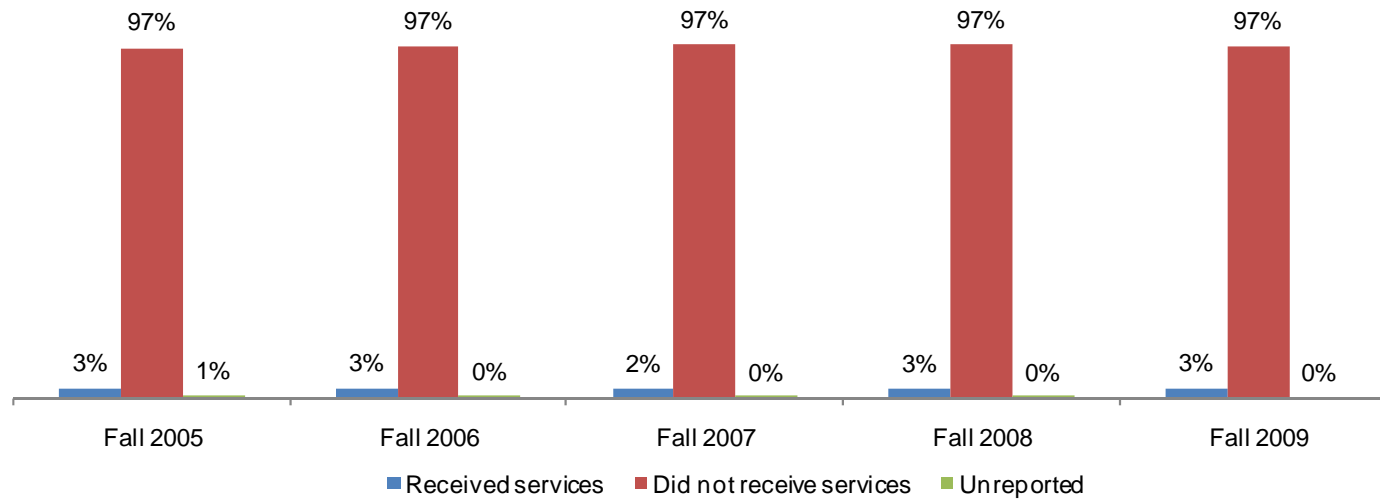


Table 1.13. All Colleges Headcount by Disability Support Programs and Services (DSPS)

	Fall 2005		Fall 2006		Fall 2007		Fall 2008		Fall 2009		% Change Fall 05-09	All Colleges Average Fall 05-09
Received Services	1,176	3%	1,172	3%	1,144	2%	1,196	3%	1,316	3%	12%	3%
Did Not Receive Services	42,553	97%	43,034	97%	45,548	97%	46,343	97%	46,333	97%	9%	97%
Unreported	234	1%	71	0%	43	0%	15	0%	0	0%	-100%	0%
<b>Total</b>	<b>43,963</b>	<b>100%</b>	<b>44,277</b>	<b>100%</b>	<b>46,735</b>	<b>100%</b>	<b>47,554</b>	<b>100%</b>	<b>47,649</b>	<b>100%</b>	<b>8%</b>	<b>100%</b>

Source: SDCCD Information System

## SDCCD Section I: Headcount and Student Characteristics

**Headcount by Extended Opportunity Programs and Services (EOPS):** On average, 97% of the general student population for all colleges in the district had not received EOPS services between Fall 2005 and Fall 2009. There was a 22% decrease in the number of students who received EOPS services from Fall 2005 to Fall 2009. In contrast, there was a 10% increase in the number of students who had not received EOPS services.

Figure 1.14. All Colleges Headcount by Extended Opportunity Programs and Services (EOPS)

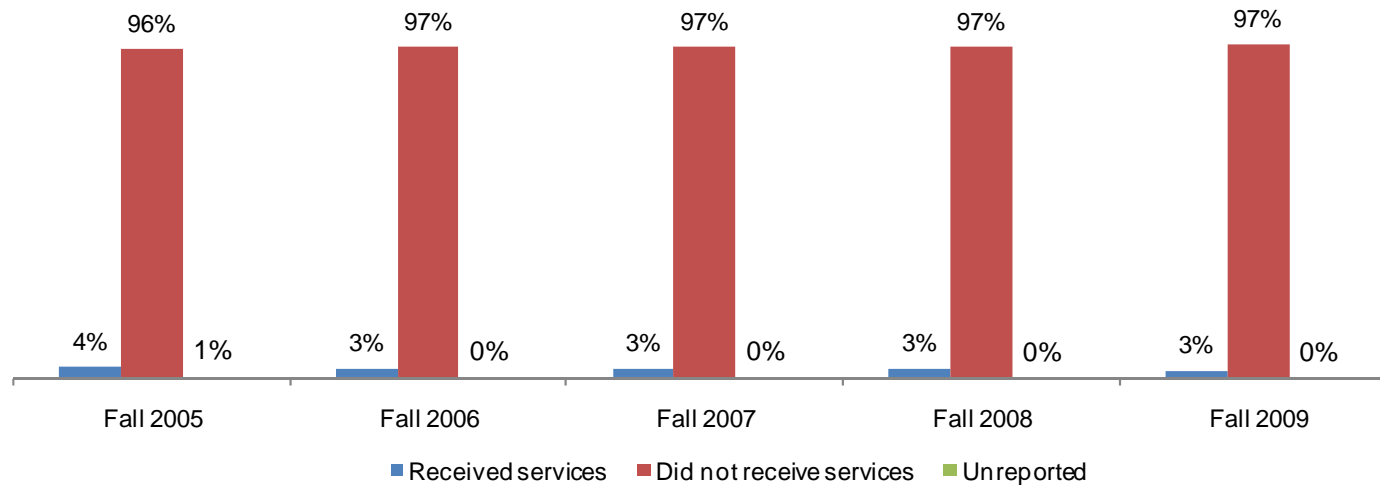


Table 1.14. All Colleges Headcount by Extended Opportunity Programs and Services (EOPS)

	Fall 2005		Fall 2006		Fall 2007		Fall 2008		Fall 2009		% Change Fall 05-09	All Colleges Average Fall 05-09
Received Services	1,544	4%	1,396	3%	1,519	3%	1,507	3%	1,201	3%	-22%	3%
Did Not Receive Services	42,185	96%	42,810	97%	45,173	97%	46,032	97%	46,448	97%	10%	97%
Unreported	234	1%	71	0%	43	0%	15	0%	0	0%	-100%	0%
<b>Total</b>	<b>43,963</b>	<b>100%</b>	<b>44,277</b>	<b>100%</b>	<b>46,735</b>	<b>100%</b>	<b>47,554</b>	<b>100%</b>	<b>47,649</b>	<b>100%</b>	<b>8%</b>	<b>100%</b>

Source: SDCCD Information System

**Section II**  
**Term Persistence Rates**

## **SDCCD Section II: Term Persistence Rates**

---

This section of the Fact Book contains information on first-time to college student term persistence rates. For purposes of this report, term persistence rate is the measure of first-time to college students who were enrolled in a fall term as of census (eliminating drops and never attends prior to census) and who completed the term with a grade notation of A, B, C, P (Pass), D, F, I, NP (Not-Pass), or RD (Report Delayed), then were enrolled as of census in the subsequent spring term and received a grade notation for that term. Note that all Miramar academy courses and Continuing Education term persistence were excluded from districtwide analyses. The information in this section includes five years of data and is reported as follows:

- 1) Overall
- 2) Gender
- 3) Age
- 4) Ethnicity

## SDCCD Section II: Term Persistence Rates

**Overall Term Persistence:** The average term persistence rate of first-time students at the colleges in the district was 67% between the Fall 2005 and Fall 2009 cohorts. Persistence rates peaked to a high of 72% in the Fall 2009 cohort and dipped to a low of 63% in the Fall 2005 cohort. Overall, term persistence rates increased 9%, from 63% in the Fall 2005 cohort to 72% in the Fall 2009 cohort.

Figure 2.1. All Colleges First-Time Student Overall Term Persistence

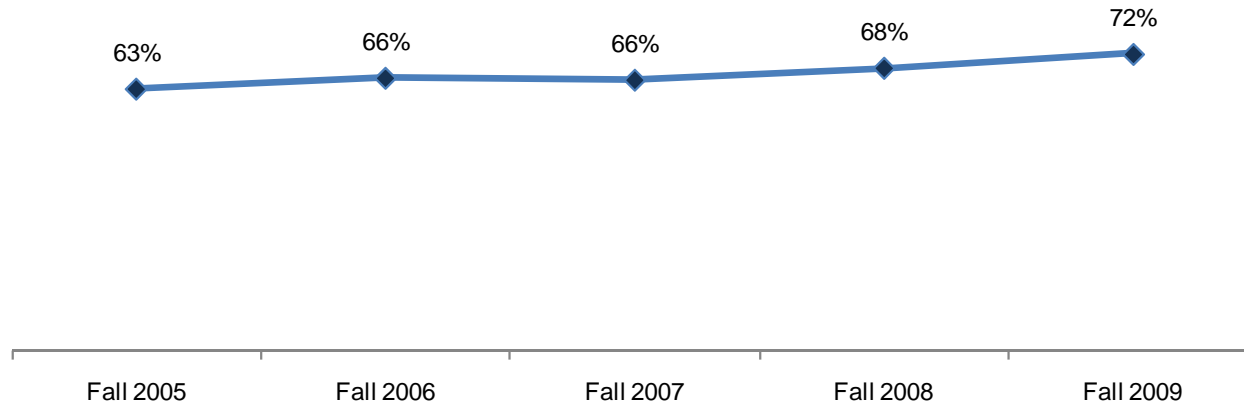


Table 2.1. All Colleges First-Time Student Overall Term Persistence

Cohort	Fall	Spring	Persistence
Fall 2005	3,036	1,925	63%
Fall 2006	3,624	2,392	66%
Fall 2007	3,977	2,607	66%
Fall 2008	3,987	2,727	68%
Fall 2009	4,084	2,929	72%
<b>Average</b>			<b>67%</b>

Source: SDCCD Information System

Note: Miramar academy courses were excluded



## SDCCD Section II: Term Persistence Rates

**Term Persistence by Gender:** On average, term persistence rates of female students (70%) were higher than their male student counterpart (65%) between the Fall 2005 and Fall 2009 cohorts. Persistence rates increased for both female and male students between the Fall 2005 and Fall 2009 cohorts (7% & 9%, respectively).

Figure 2.2. All Colleges First-Time Student Term Persistence by Gender

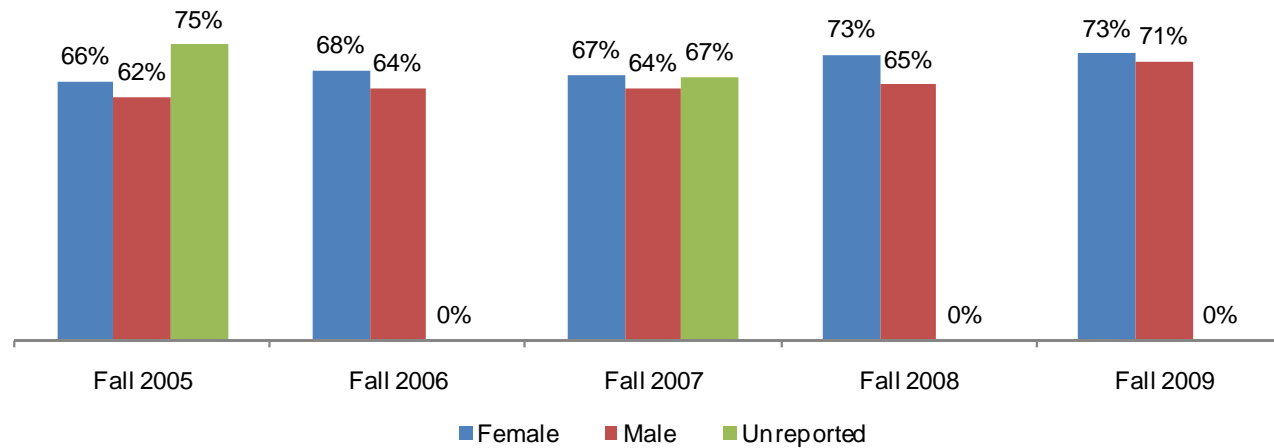


Table 2.2. All Colleges First-Time Student Term Persistence by Gender

Cohort	Female			Male			Unreported		
	Fall	Spring	Persistence	Fall	Spring	Persistence	Fall	Spring	Persistence
Fall 2005	1,339	879	66%	1,693	1,043	62%	4	3	75%
Fall 2006	1,691	1,157	68%	1,933	1,235	64%	0	0	---
Fall 2007	1,884	1,266	67%	2,090	1,339	64%	3	2	67%
Fall 2008	1,825	1,326	73%	2,161	1,401	65%	1	0	0%
Fall 2009	1,911	1,389	73%	2,173	1,540	71%	0	0	---
<b>Average</b>			<b>70%</b>			<b>65%</b>			<b>63%</b>

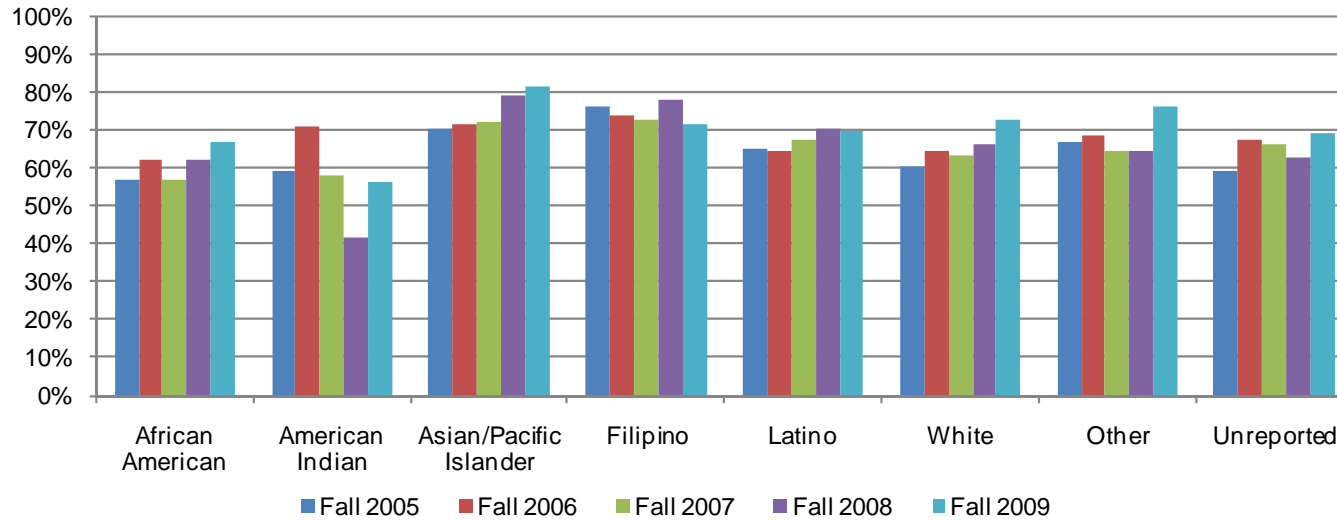
Source: SDCCD Information System

Note: Miramar academy courses were excluded

## SDCCD Section II: Term Persistence Rates

**Term Persistence by Ethnicity:** The ethnic groups with the highest term persistence rates, on average, were Asian/Pacific Islander students (75%), Filipino students (74%), and both students categorized as 'Other' ethnicities and Latino students (68% each). Persistence rates peaked to a high of 81% for Asian/Pacific Islander students in the Fall 2009 cohort. Persistence rates of Filipino students decreased 5%, from 59% in the Fall 2005 cohort to 56% in the Fall 2009 cohort. However, persistence rates of White students increased 12% between the Fall 2005 and Fall 2009 cohorts.

Figure 2.3. All Colleges First-Time Student Term Persistence by Ethnicity



## SDCCD Section II: Term Persistence Rates

Table 2.3. All Colleges First-Time Student Term Persistence by Ethnicity

Cohort	African American			American Indian			Asian/Pacific Islander			Filipino		
	Fall	Spring	Persistence	Fall	Spring	Persistence	Fall	Spring	Persistence	Fall	Spring	Persistence
Fall 2005	298	169	57%	27	16	59%	333	234	70%	204	155	76%
Fall 2006	327	203	62%	31	22	71%	414	295	71%	204	151	74%
Fall 2007	378	214	57%	43	25	58%	465	336	72%	225	163	72%
Fall 2008	375	232	62%	36	15	42%	431	340	79%	230	179	78%
Fall 2009	432	289	67%	25	14	56%	450	366	81%	224	160	71%
<b>Average</b>			<b>61%</b>			<b>57%</b>			<b>75%</b>			<b>74%</b>

Cohort	Latino			White			Other			Unreported		
	Fall	Spring	Persistence	Fall	Spring	Persistence	Fall	Spring	Persistence	Fall	Spring	Persistence
Fall 2005	817	529	65%	1,049	631	60%	117	78	67%	191	113	59%
Fall 2006	982	633	64%	1,295	837	65%	124	85	69%	247	166	67%
Fall 2007	1,159	778	67%	1,341	851	63%	137	88	64%	229	152	66%
Fall 2008	1,175	825	70%	1,376	906	66%	106	68	64%	258	162	63%
Fall 2009	1,380	963	70%	1,207	873	72%	155	118	76%	211	146	69%
<b>Average</b>			<b>68%</b>			<b>65%</b>			<b>68%</b>			<b>65%</b>

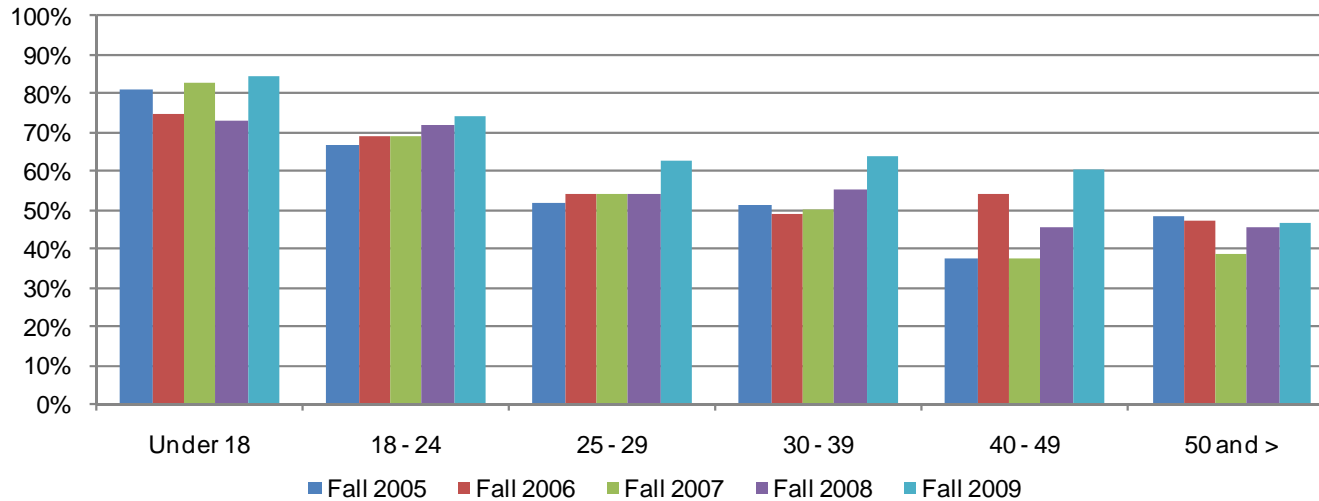
Source: SDCCD Information System

Note: Miramar academy courses were excluded

## SDCCD Section II: Term Persistence Rates

**Term Persistence by Age:** A general trend among the Fall 2005 to the Fall 2009 cohorts showed as age increased, term persistence rates decreased. For students under age 18, persistence rates peaked to a high of 85% in the Fall 2009 cohort. Persistence rates for students ages 18-24 increased 7%, from 67% in the Fall 2005 cohort to 74% in the Fall 2009 cohort. Persistence rates for students between ages 40 and 49 years old also increased 23%, from 37% in the Fall 2005 cohort to 60% in the Fall 2009 cohort.

Figure 2.4. All Colleges First-Time Student Term Persistence by Age



## SDCCD Section II: Term Persistence Rates

Table 2.4. All Colleges First-Time Student Term Persistence by Age

Cohort	Under 18			18 - 24			25 - 29		
	Fall	Spring	Persistence	Fall	Spring	Persistence	Fall	Spring	Persistence
Fall 2005	48	39	81%	2,389	1,594	67%	237	123	52%
Fall 2006	48	36	75%	2,959	2,036	69%	251	136	54%
Fall 2007	41	34	83%	3,205	2,219	69%	299	162	54%
Fall 2008	52	38	73%	3,191	2,300	72%	305	166	54%
Fall 2009	65	55	85%	3,210	2,381	74%	352	220	63%
<b>Average</b>			<b>80%</b>			<b>70%</b>			<b>56%</b>

Cohort	30 - 39			40 - 49			50 and >		
	Fall	Spring	Persistence	Fall	Spring	Persistence	Fall	Spring	Persistence
Fall 2005	189	97	51%	107	40	37%	66	32	48%
Fall 2006	208	102	49%	105	57	54%	53	25	47%
Fall 2007	229	115	50%	131	49	37%	72	28	39%
Fall 2008	243	134	55%	121	55	45%	75	34	45%
Fall 2009	255	163	64%	116	70	60%	86	40	47%
<b>Average</b>			<b>54%</b>			<b>47%</b>			<b>45%</b>

Source: SDCCD Information System

Note: Miramar academy courses were excluded

**Section III**  
**Student Outcomes**

## **SDCCD Section III: Student Outcomes (Success Rates)**

---

This section of the Fact Book contains information on various student outcomes which may be considered indirect assessments of student learning. The outcomes included in this section are: 1) Annual Successful Course Completion Rates, 2) Annual Retention Rates, 3) Annual GPA, 4) Annual Awards Conferred, and 5) Annual Transfer Volume. All of the information in this section includes five years by gender, age, and ethnicity. The following describes in detail each of the outcomes listed.

- 1) **Successful Course Completion Rates.** The first outcome reported in this section is successful course completion, or student success rate. For purposes of this report, the success rate is the percentage of students who completed a course with a grade of A, B, C, or P out of total enrollments as of census. *Note: Tutoring and non-credit classes are excluded.*
- 2) **Retention Rates.** The second outcome reported in this section is retention rate. For purposes of this report, the retention rate is the percentage of students who completed a course with a grade of A, B, C, D, F, P, NP, I, or RD out of total enrollments as of census.
- 3) **Annual GPA.** The third outcome reported in this section is annual GPA. For purposes of this report, the annual GPA is the cumulative term grade point average of all courses taken for a grade in one academic year.
- 4) **Annual Awards Conferred.** The fourth outcome reported in this section is the annual awards conferred. For purposes of this report, the annual awards conferred are the total number of associate degrees, diplomas, GEDs, and certificates awarded in a single academic year (summer, fall, and spring). *Note: Annual awards conferred that are reported in this Fact Book are considered preliminary data. Please see the upcoming Awards Conferred Supplement report for final annual awards conferred numbers.*
- 5) **Annual Transfer Volume.** The last outcome reported in this section is the number of students who transfer annually. For the purposes of this report, the annual transfer volume represents the total number of students who transferred to a 4-year institution either during the last semester they were enrolled at an SDCCD college or up to three semesters following the last semester they were enrolled at an SDCCD college. The last semester attended includes students who stopped out for one or more semesters and enrolled at a later date (reverse transfer). The student must also have completed 12 or more cumulative transferrable units earned within 12 consecutive semesters preceding and including the last semester enrolled at SDCCD.

*Note: Transfer volume that is reported in this Fact Book is considered preliminary data. Please see the upcoming Spring 2011 SDCCD Transfer Report: A Longitudinal Perspective for final transfer volume numbers.*

## SDCCD Section III: Student Outcomes (Success Rates)

**Overall Success Rates:** The annual success rates of all colleges in the district displayed a 2% increase, from 66% in 2005/06 to 68% in 2009/10, with an average of 67%.

Figure 3.1. All Colleges Overall Success Rates

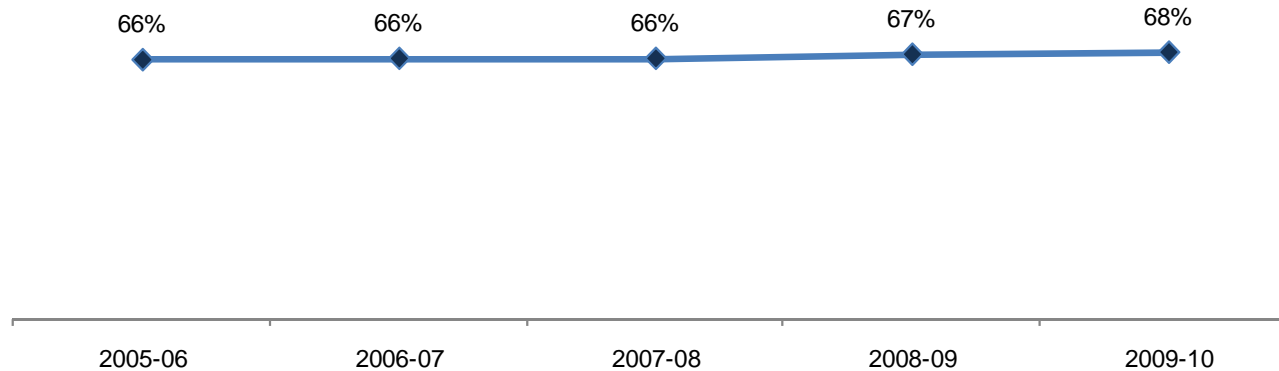


Table 3.1. All Colleges Overall Success Rates

	2005-06	2006-07	2007-08	2008-09	2009-10	% Change 05/06-09/10	All Colleges Average 2005-10
<b>Average</b>	66%	66%	66%	67%	68%	2%	67%

Source: SDCCD Information System

Note: Tutoring classes were excluded.



## SDCCD Section III: Student Outcomes (Success Rates)

**Success Rates by Gender:** The average success rate of female students (67%) was slightly higher compared to the average success rate of their male student counterpart (66%) between 2005/06 and 2009/10. The average success rate of female students was the same as the average success rate of the general student population for all colleges in the district (67%), while the average success rate of male students was comparable to the same average.

Figure 3.2. All Colleges Success Rates by Gender

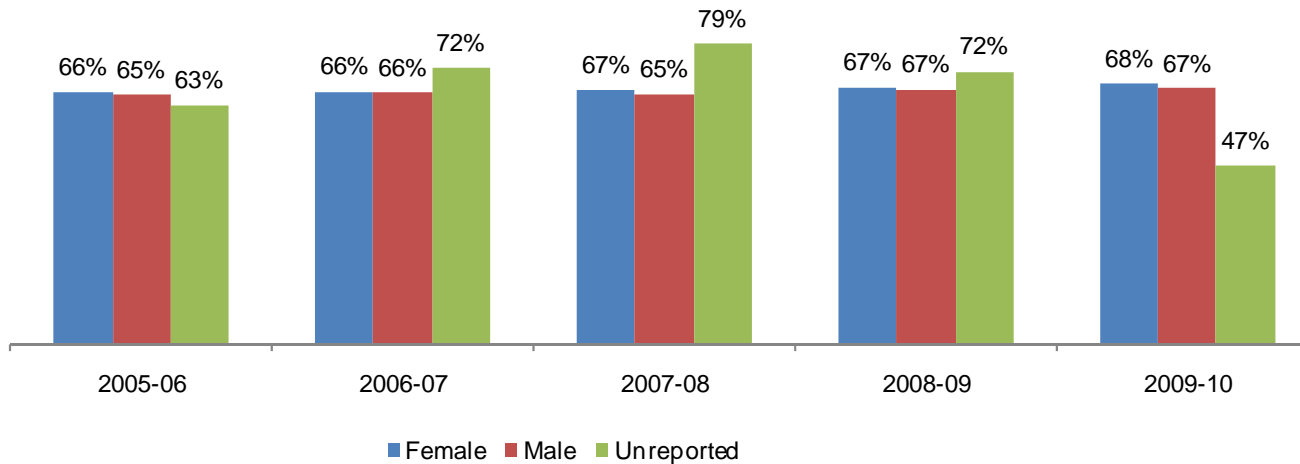


Table 3.2. All Colleges Success Rates by Gender

	2005-06	2006-07	2007-08	2008-09	2009-10	% Change 05/06-09/10	All Colleges Average 2005-10
Female	66%	66%	67%	67%	68%	2%	67%
Male	65%	66%	65%	67%	67%	2%	66%
Unreported	63%	72%	79%	72%	47%	-16%	69%
<b>Average</b>	<b>66%</b>	<b>66%</b>	<b>66%</b>	<b>67%</b>	<b>68%</b>	<b>2%</b>	<b>67%</b>

Source: SDCCD Information System

Note: Tutoring classes were excluded.

## SDCCD Section III: Student Outcomes (Success Rates)

**Success Rates by Ethnicity:** On average, the ethnic groups with the highest success rates were both White students and Asian/Pacific Islander students (71% each) and Filipino students (66%) between 2005/06 and 2009/10. The average success rates of African American, American Indian, Latino and students categorized as 'Other' ethnicities were lower than the average success rate of the general student population of all colleges in the district (67%). The average success rates of White, Asian/Pacific Islander, and Filipino students exceeded or were comparable to the same average.

Figure 3.3. All Colleges Success Rates by Ethnicity

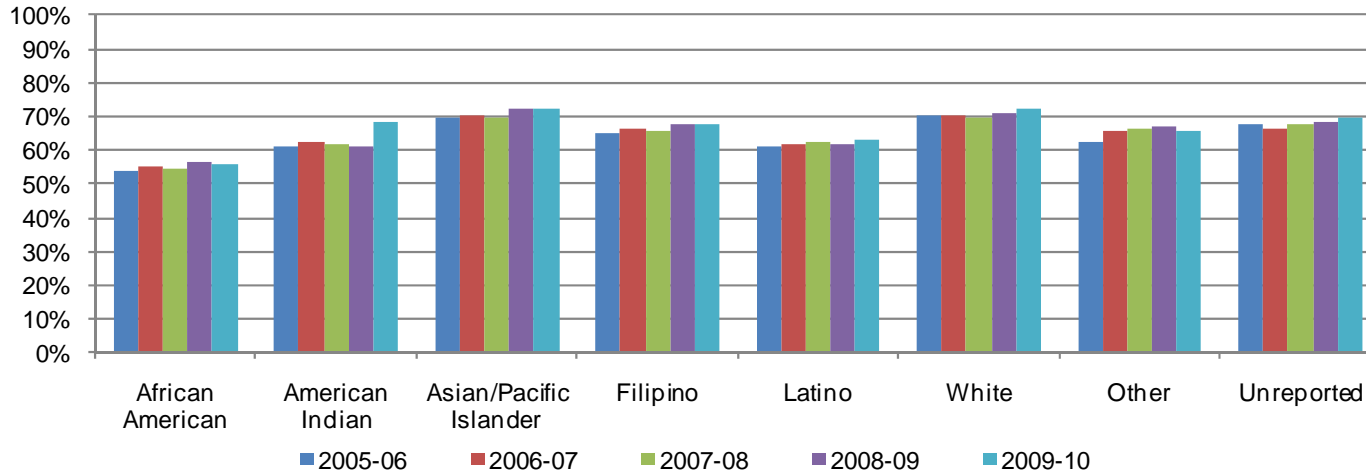


Table 3.3. All Colleges Success Rates by Ethnicity

	2005-06	2006-07	2007-08	2008-09	2009-10	% Change 05/06-09/10	All Colleges Average 2005-10
African American	54%	55%	55%	56%	56%	2%	55%
American Indian	61%	62%	62%	61%	69%	8%	63%
Asian/Pacific Islander	69%	70%	70%	72%	72%	3%	71%
Filipino	65%	66%	65%	68%	68%	2%	66%
Latino	61%	61%	62%	62%	63%	2%	62%
White	70%	70%	70%	71%	73%	2%	71%
Other	62%	65%	67%	67%	66%	3%	65%
Unreported	68%	67%	68%	68%	70%	2%	68%
<b>Average</b>	<b>66%</b>	<b>66%</b>	<b>66%</b>	<b>67%</b>	<b>68%</b>	<b>2%</b>	<b>67%</b>

Source: SDCCD Information System

Note: Tutoring classes were excluded.

## SDCCD Section III: Student Outcomes (Success Rates)

**Success Rates by Age:** With the exception of students who were under age 18, a general trend showed, on average, as age increased so did success rates. Students who were below 18 years old had the highest success rate (84%) on average. With the exception of students ages 18-24, the average success rates of all other age groups were higher compared to the average success rates of the general student population for all colleges in the district (67%).

Figure 3.4. All Colleges Success Rates by Age

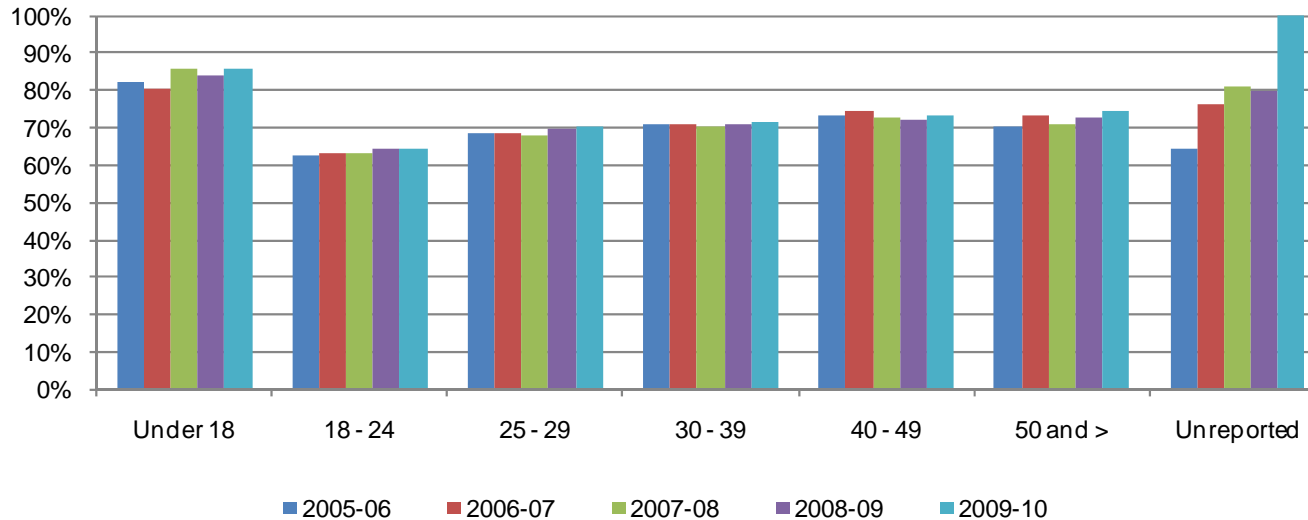


Table 3.4. All Colleges Success Rates by Age

	2005-06	2006-07	2007-08	2008-09	2009-10	% Change 05/06-09/10	All Colleges Average 2005-10
Under 18	82%	80%	86%	84%	86%	3%	84%
18 - 24	63%	63%	63%	64%	64%	2%	64%
25 - 29	69%	68%	68%	69%	70%	1%	69%
30 - 39	71%	71%	71%	71%	72%	1%	71%
40 - 49	73%	74%	72%	72%	73%	0%	73%
50 and >	71%	73%	71%	73%	74%	4%	73%
Unreported	64%	76%	81%	80%	100%	36%	72%
<b>Average</b>	<b>66%</b>	<b>66%</b>	<b>66%</b>	<b>67%</b>	<b>68%</b>	<b>2%</b>	<b>67%</b>

Source: SDCCD Information System

Note: Tutoring classes were excluded.

## SDCCD Section III: Student Outcomes (Retention Rates)

**Overall Retention Rates:** The annual retention rates of all colleges in the district displayed a 3% increase, from 82% in 2005/06 to 85% in 2009/10, with an average of 83%.

Figure 3.5. All Colleges Overall Retention Rates

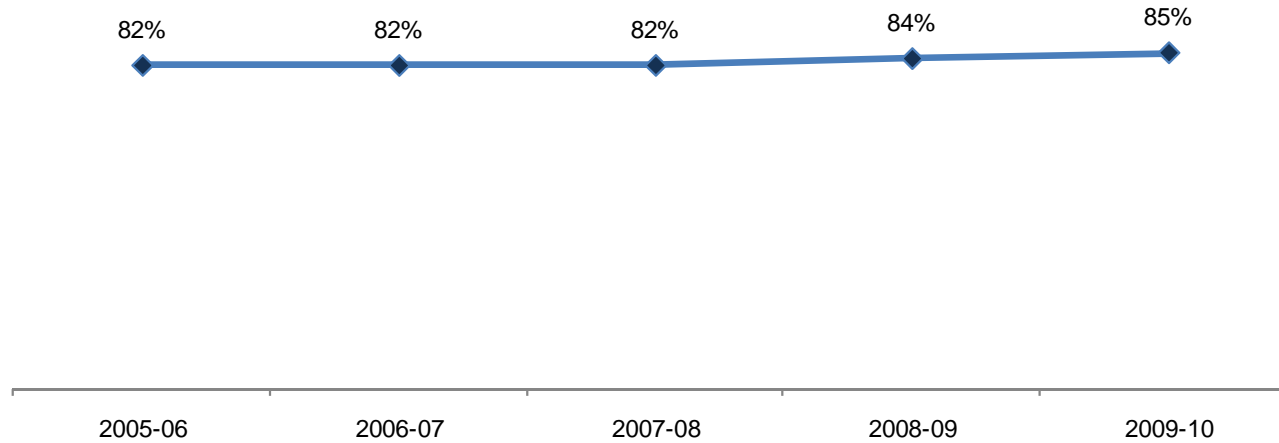


Table 3.5. All Colleges Overall Retention Rates

	2005-06	2006-07	2007-08	2008-09	2009-10	% Change 05/06-09/10	All Colleges Average 2005-10
<b>Average</b>	82%	82%	82%	84%	85%	3%	83%

Source: SDCCD Information System

## SDCCD Section III: Student Outcomes (Retention Rates)

**Retention Rates by Gender:** The average retention rate of female students (83%) was the same as the average retention rate of their male student counterpart (83%) between 2005/06 and 2009/10. The average retention rates of male and female student populations of all colleges in the district were comparable to the average retention rate of the general student population for all colleges in the district (83%).

Figure 3.6. All Colleges Retention Rates by Gender

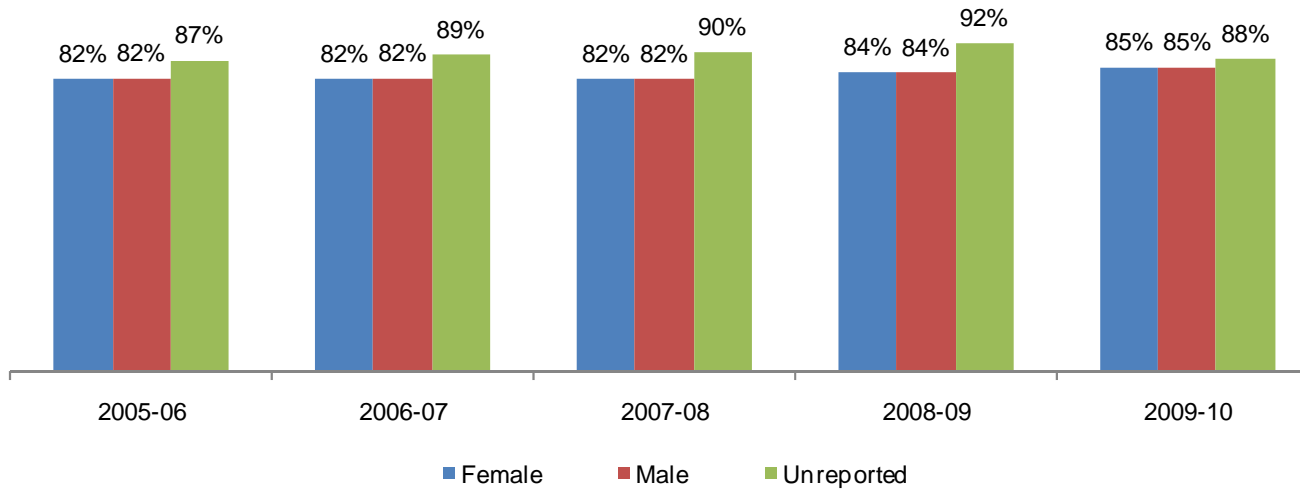


Table 3.6. All Colleges Retention Rates by Gender

	2005-06	2006-07	2007-08	2008-09	2009-10	% Change 05/06-09/10	All Colleges Average 2005-10
Female	82%	82%	82%	84%	85%	4%	83%
Male	82%	82%	82%	84%	85%	3%	83%
Unreported	87%	89%	90%	92%	88%	0%	88%
<b>Average</b>	<b>82%</b>	<b>82%</b>	<b>82%</b>	<b>84%</b>	<b>85%</b>	<b>3%</b>	<b>83%</b>

Source: SDCCD Information System

## SDCCD Section III: Student Outcomes (Retention Rates)

**Retention Rates by Ethnicity:** Between 2005/06 and 2009/10, the ethnic groups with the highest retention rates, on average, were Asian/Pacific Islander students (85%), White students (84%), and students categorized as 'Other' ethnicities (84%). The average retention rates of African American, American Indian, Latino, and Filipino students were lower or comparable to the average retention rate of the general student population for all colleges in the district (83%). The average retention rates of Asian/Pacific Islander, White, and students categorized as 'Other' ethnicities exceeded the same averages. All groups showed an increase in retention rates between 2005/06 and 2009/10.

Figure 3.7. All Colleges Retention Rates by Ethnicity

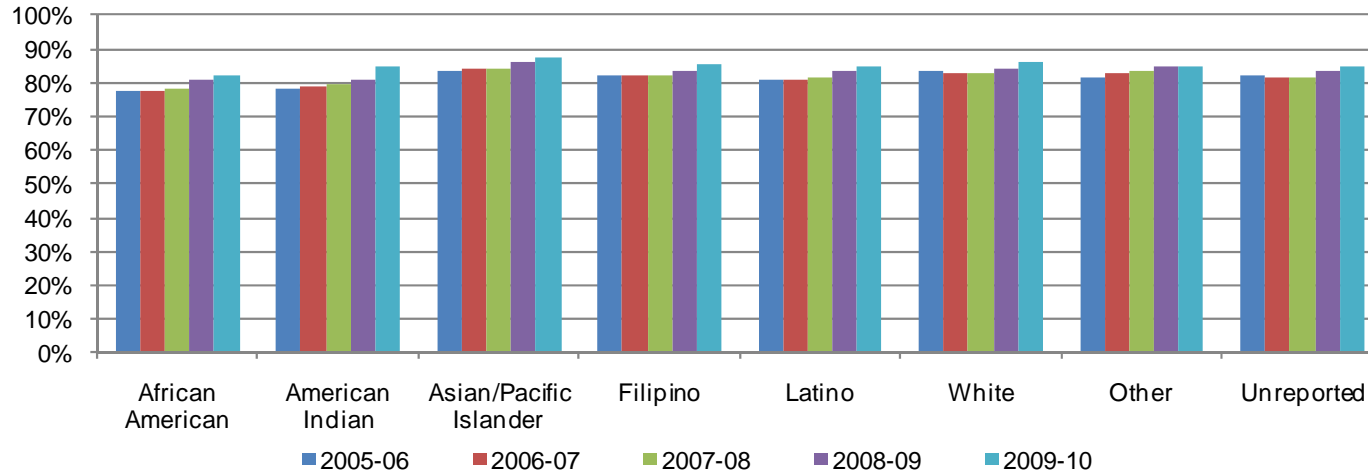


Table 3.7. All Colleges Retention Rates by Ethnicity

	2005-06	2006-07	2007-08	2008-09	2009-10	% Change 05/06-09/10	All Colleges Average 2005-10
African American	78%	78%	78%	81%	82%	5%	79%
American Indian	78%	79%	80%	81%	85%	6%	80%
Asian/Pacific Islander	84%	84%	84%	86%	87%	3%	85%
Filipino	82%	82%	82%	83%	86%	3%	83%
Latino	81%	81%	82%	83%	85%	4%	83%
White	83%	83%	83%	84%	86%	3%	84%
Other	82%	83%	84%	85%	85%	3%	84%
Unreported	82%	82%	81%	83%	85%	3%	83%
<b>Average</b>	<b>82%</b>	<b>82%</b>	<b>82%</b>	<b>84%</b>	<b>85%</b>	<b>3%</b>	<b>83%</b>

Source: SDCCD Information System

## SDCCD Section III: Student Outcomes (Retention Rates)

**Retention Rates by Age:** Between 2005/06 and 2009/10, the age groups with the highest retention rates, on average, were students who were below 18 years old (94%), students between ages 40 and 49 years old (84%), and students 50 years and older (84%). The average retention rates of students between ages 18-50 years and older were comparable to or higher than the average retention rate of the general student population for all colleges in the district (83%). The average retention rates of students under age 18 exceeded the same average.

Figure 3.8. All Colleges Retention Rates by Age

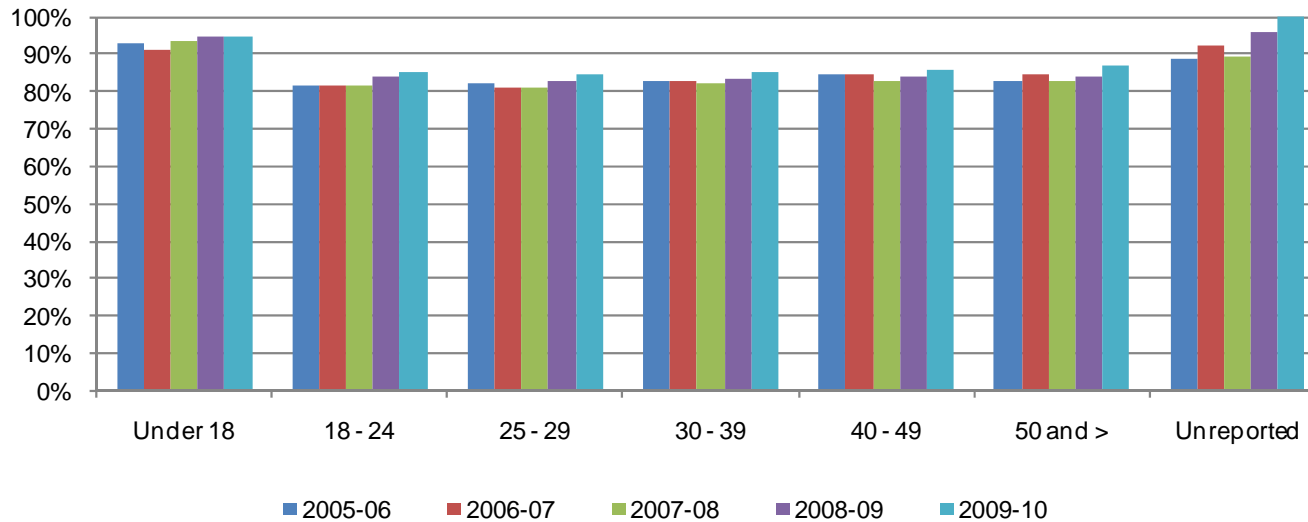


Table 3.8. All Colleges Retention Rates by Age

	2005-06	2006-07	2007-08	2008-09	2009-10	% Change 05/06-09/10	All Colleges Average 2005-10
Under 18	93%	91%	94%	95%	95%	2%	94%
18 - 24	81%	82%	82%	84%	85%	4%	83%
25 - 29	82%	81%	81%	83%	85%	3%	83%
30 - 39	83%	83%	82%	84%	85%	2%	83%
40 - 49	84%	85%	83%	84%	86%	2%	84%
50 and >	83%	85%	83%	84%	87%	4%	84%
Unreported	89%	93%	90%	96%	100%	11%	90%
<b>Average</b>	<b>82%</b>	<b>82%</b>	<b>82%</b>	<b>84%</b>	<b>85%</b>	<b>3%</b>	<b>83%</b>

Source: SDCCD Information System

## SDCCD Section III: Student Outcomes (Annual GPA)

**Overall Annual GPA:** The annual GPAs of all colleges in the district remained relatively stable between 2005/06 and 2009/10, with an average of 2.67

Figure 3.9. All Colleges Overall Annual GPA

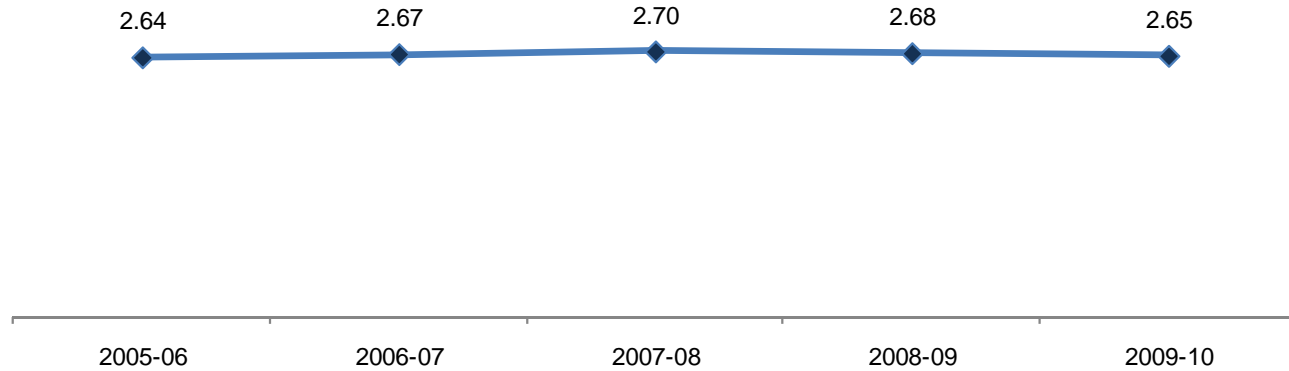


Table 3.9. All Colleges Overall Annual GPA

	2005-06	2006-07	2007-08	2008-09	2009-10	All Colleges Average 2005-10
Average	2.64	2.67	2.70	2.68	2.65	2.67

Source: SDCCD Information System



## SDCCD Section III: Student Outcomes (Annual GPA)

**Annual GPA by Gender:** Between 2005/06 and 2009/10, female students, on average, had higher GPAs than their male student counterpart (2.71 & 2.62, respectively). The average annual GPA of female students was higher than the average annual GPA of the general student population for all colleges in the district (2.67), while the average annual GPA of male students was slightly lower than same average.

Figure 3.10. All Colleges Annual GPA by Gender

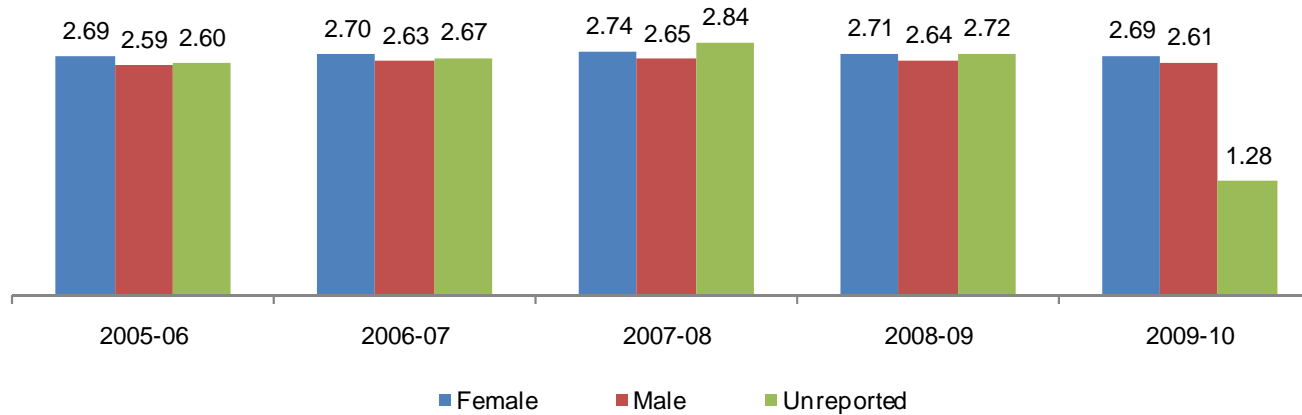


Table 3.10. All Colleges Annual GPA by Gender

	2005-06	2006-07	2007-08	2008-09	2009-10	All Colleges Average 2005-10
Female	2.69	2.70	2.74	2.71	2.69	2.71
Male	2.59	2.63	2.65	2.64	2.61	2.62
Unreported	2.60	2.67	2.84	2.72	1.28	2.66
<b>Average</b>	<b>2.64</b>	<b>2.67</b>	<b>2.70</b>	<b>2.68</b>	<b>2.65</b>	<b>2.67</b>

Source: SDCCD Information System

## SDCCD Section III: Student Outcomes (Annual GPA)

**Annual GPA by Ethnicity:** Both White students (2.86) and Asian/Pacific Islander students (2.79) had the highest GPAs, on average, between 2005/06 and 2009/10. The average annual GPA of African American, American Indian, Filipino, Latino, and students categorized as 'Other' ethnicities were lower than the average annual GPA of the general student population for all colleges in the district (2.67), while the average annual GPAs of Asian/Pacific Islander and White students exceeded the same average.

Figure 3.11. All Colleges Annual GPA by Ethnicity

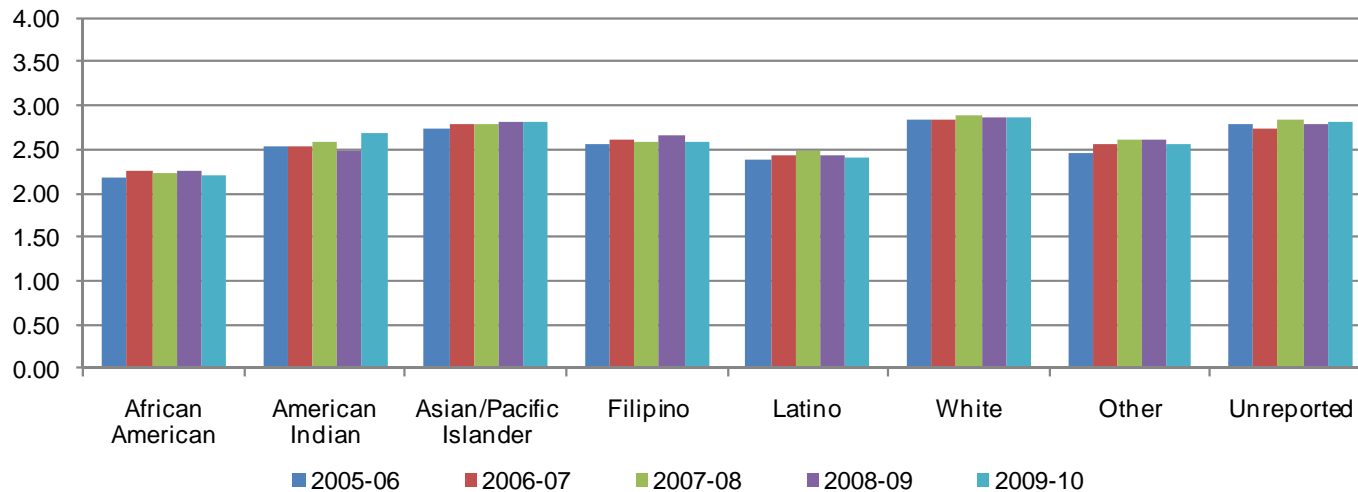


Table 3.11. All Colleges Annual GPA by Ethnicity

	2005-06	2006-07	2007-08	2008-09	2009-10	All Colleges Average 2005-10
African American	2.18	2.25	2.23	2.25	2.20	2.22
American Indian	2.53	2.53	2.59	2.49	2.69	2.57
Asian/Pacific Islander	2.75	2.78	2.79	2.82	2.80	2.79
Filipino	2.56	2.62	2.59	2.65	2.59	2.60
Latino	2.39	2.44	2.48	2.43	2.41	2.43
White	2.83	2.85	2.89	2.87	2.86	2.86
Other	2.47	2.57	2.62	2.61	2.57	2.57
Unreported	2.78	2.75	2.83	2.80	2.81	2.79
<b>Average</b>	<b>2.64</b>	<b>2.67</b>	<b>2.70</b>	<b>2.68</b>	<b>2.65</b>	<b>2.67</b>

Source: SDCCD Information System

## SDCCD Section III: Student Outcomes (Annual GPA)

**Annual GPA by Age:** With the exception of students who were under age 18, a general trend between 2005/06 and 2009/10 showed, on average, as age increased so did GPA. The average annual GPA of students who were between ages 18-24 (2.48) was lower than the average annual GPA of the general student population for all colleges in the district (2.67). The average annual GPAs of all other age groups exceeded the same average. Students between ages 18 and 50 years and older displayed a flat trend between 2005/06 and 2007/08.

Figure 3.12. All Colleges Annual GPA by Age

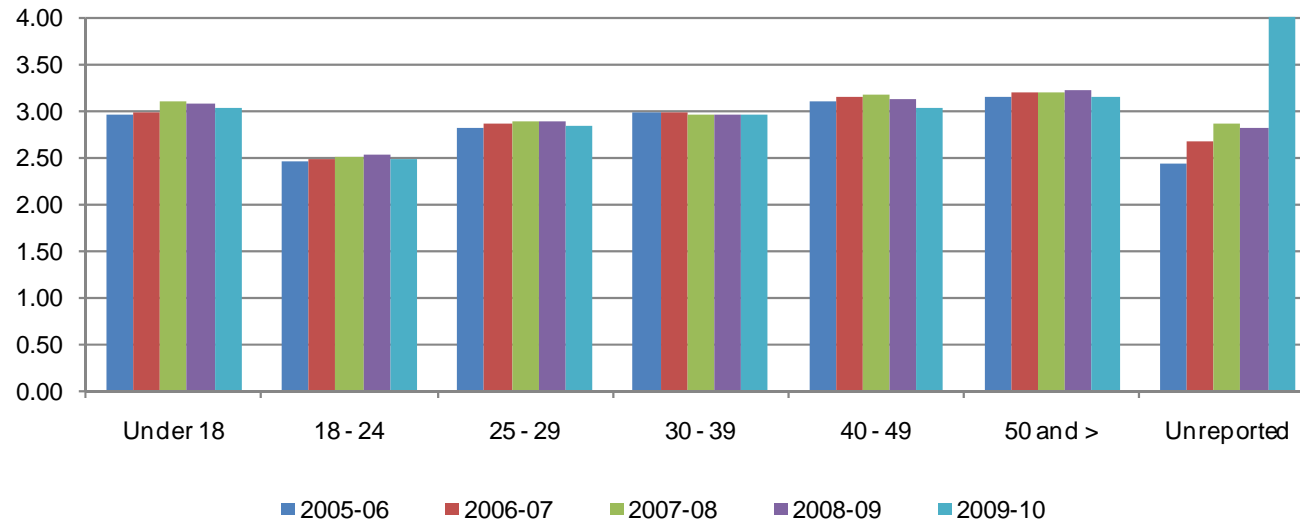


Table 3.12. All Colleges Annual GPA by Age

	2005-06	2006-07	2007-08	2008-09	2009-10	All Colleges Average 2005-10
Under 18	2.85	2.89	3.07	2.95	2.98	2.96
18 - 24	2.45	2.48	2.51	2.50	2.46	2.48
25 - 29	2.83	2.89	2.90	2.88	2.84	2.87
30 - 39	2.96	2.99	3.00	2.96	2.94	2.97
40 - 49	3.05	3.07	3.10	3.05	3.01	3.05
50 and >	3.04	3.09	3.08	3.12	3.10	3.09
Unreported	2.76	2.72	3.01	3.02	4.00	2.81
<b>Average</b>	<b>2.64</b>	<b>2.67</b>	<b>2.70</b>	<b>2.68</b>	<b>2.65</b>	<b>2.67</b>

Source: SDCCD Information System

## SDCCD Section III: Student Outcomes (Annual Awards Conferred)

**Annual Awards Conferred:** On average, 46% of the total awards conferred districtwide were associate degrees. The number of Continuing Education certificates of completion showed a 56% increase, from 594 in 2005/06 to 1,177 in 2008/09 and then down somewhat to 924 in 2009/10. Similarly, certificates that require 30 to 59 units increased 47%, from 461 in 2005/06 to 677 in 2009/10. The high school diploma award category also increased by 26%, from 356 in 2005/06 to 447 in 2009/10 with a peak in 2008/09 of 588.

Figure 3.13. SDCCD Overall Annual Awards Conferred

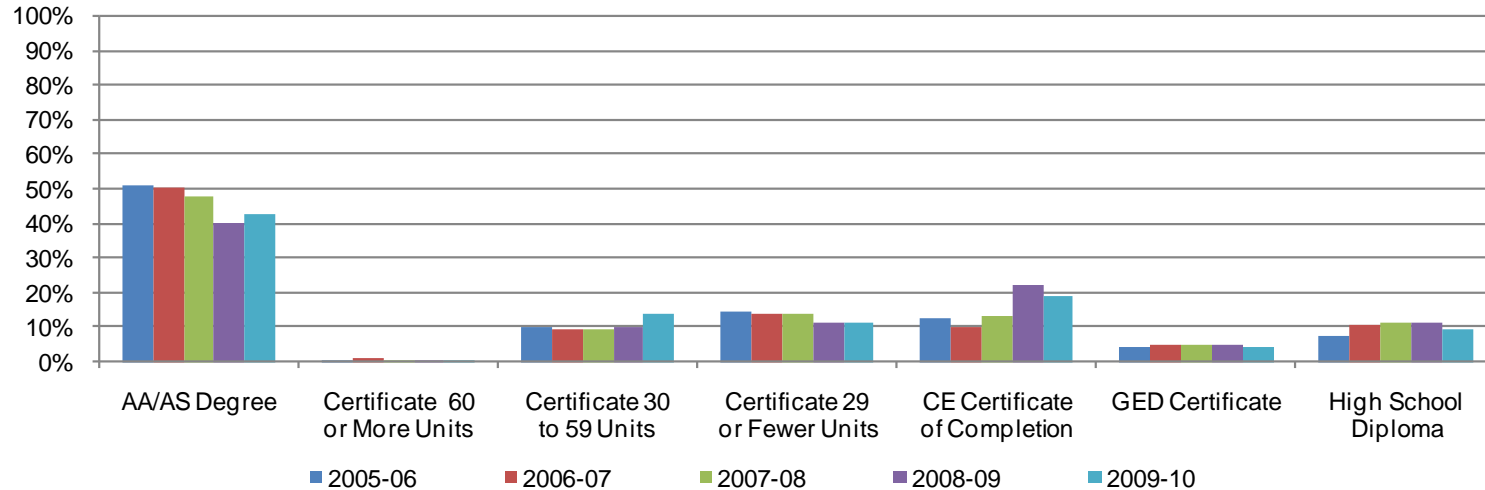


Table 3.13. SDCCD Overall Annual Awards Conferred

	2005-06		2006-07		2007-08		2008-09		2009-10		% Change 05/06-09/10	Districtwide Average 05/06-09/10
AA/AS Degree	2,418	51%	2,209	50%	2,070	48%	2,124	40%	2,057	42%	-15%	46%
Certificate 60 or More Units	16	0%	31	1%	22	1%	24	0%	11	0%	-31%	0%
Certificate 30 to 59 Units	461	10%	397	9%	398	9%	511	10%	677	14%	47%	10%
Certificate 29 or Fewer Units	670	14%	616	14%	595	14%	586	11%	537	11%	-20%	13%
CE Certificate of Completion	594	13%	448	10%	581	13%	1,177	22%	924	19%	56%	16%
GED Certificate	199	4%	210	5%	196	5%	248	5%	196	4%	-2%	4%
High School Diploma	356	8%	472	11%	489	11%	588	11%	447	9%	26%	10%
<b>Total</b>	<b>4,714</b>	<b>100%</b>	<b>4,383</b>	<b>100%</b>	<b>4,351</b>	<b>100%</b>	<b>5,258</b>	<b>100%</b>	<b>4,849</b>	<b>100%</b>	<b>3%</b>	<b>100%</b>

Source: SDCCD Information System

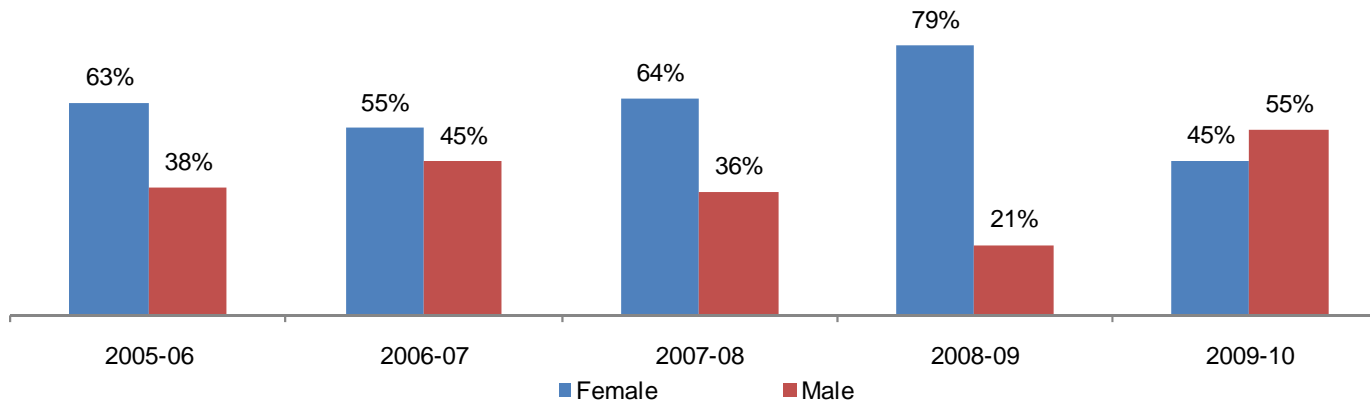
## SDCCD Section III: Student Outcomes (Annual Awards Conferred)

**Annual Awards Conferred by Gender:** Of the total awards conferred districtwide, female students (57%) received more associate degrees, on average, than their male student counterpart (43%) between 2005/06 and 2009/10. Both male and female students displayed a decreased trend of 18% and 13%, respectively, for the number of associate degrees awarded within all colleges in the district between 2005/06 and 2009/10. From 2005/06 to 2009/10, of the total awards conferred districtwide, male students (54%) received more Continuing Education certificates of completion, on average, than their female student counterpart (46%). Most of the Continuing Education award categories (CE certificates of completion & high school diploma) displayed an increased trend in the amount of awards conferred between 2005/06 and 2009/10.

Figure 3.14.1. SDCCD Annual AA/AS Degrees by Gender



Figure 3.14.2. SDCCD Annual Certificates 60 or More Units by Gender

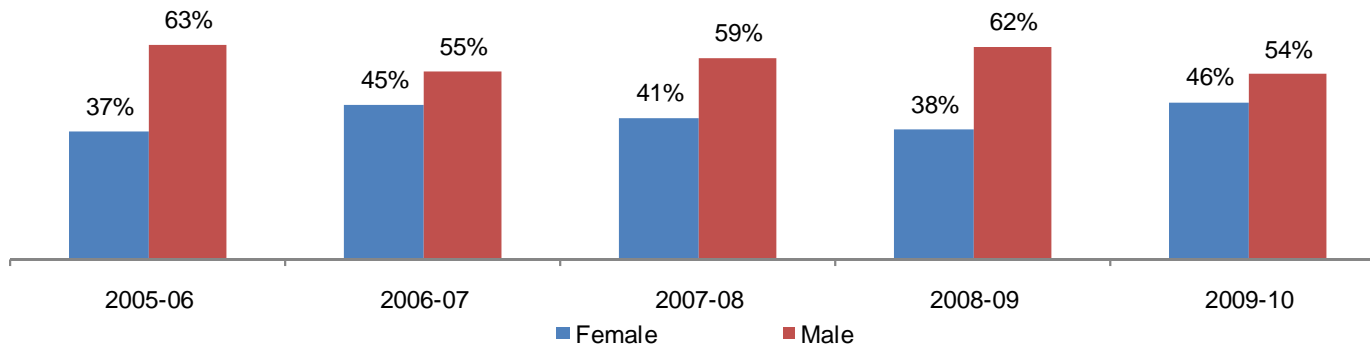


## SDCCD Section III: Student Outcomes (Annual Awards Conferred)

Figure 3.14.3. SDCCD Annual Certificates 30 to 59 Units by Gender



Figure 3.14.4. SDCCD Annual Certificates 29 or Fewer Units by Gender



## SDCCD Section III: Student Outcomes (Annual Awards Conferred)

Figure 3.14.5. SDCCD Annual CE Certificates of Completion by Gender



Figure 3.14.6. SDCCD Annual GED Certificates by Gender



# SDCCD Section III: Student Outcomes (Annual Awards Conferred)

Figure 3.14.7. SDCCD Annual High School Diplomas by Gender





## SDCCD Section III: Student Outcomes (Annual Awards Conferred)

Table 3.14. SDCCD Annual Awards Conferred by Gender

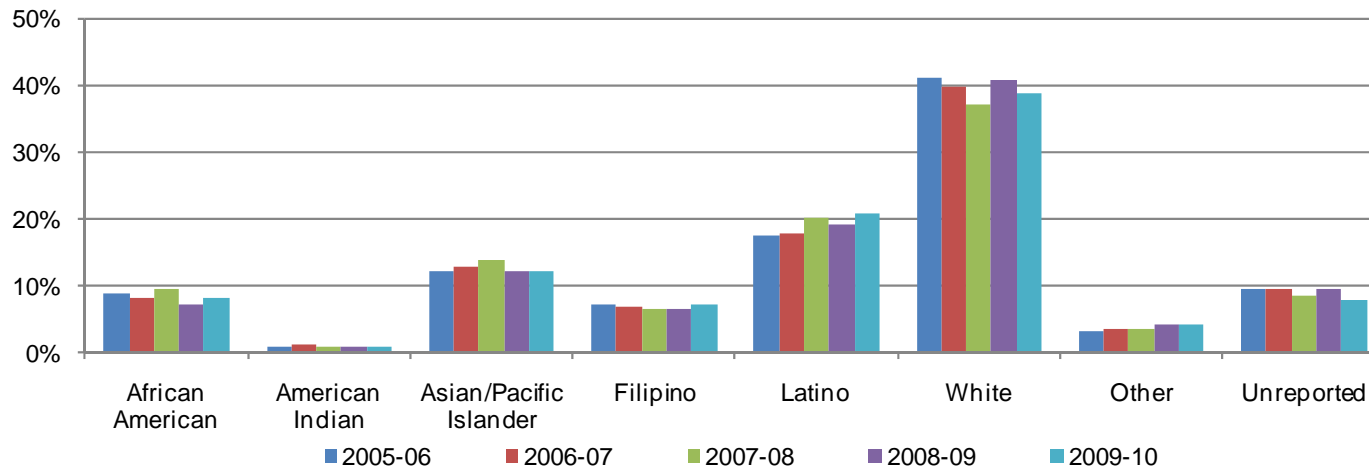
		2005-06		2006-07		2007-08		2008-09		2009-10		% Change 05/06-09/10	Districtwide Average 05/06-09/10
AA/AS Degree	Female	1,342	56%	1,274	58%	1,175	57%	1,221	57%	1,172	57%	-13%	57%
	Male	1,075	44%	934	42%	895	43%	902	42%	885	43%	-18%	43%
	Unreported	1	0%	1	0%	0	0%	1	0%	0	0%	-100%	0%
	<b>Total</b>	<b>2,418</b>	<b>100%</b>	<b>2,209</b>	<b>100%</b>	<b>2,070</b>	<b>100%</b>	<b>2,124</b>	<b>100%</b>	<b>2,057</b>	<b>100%</b>	<b>-15%</b>	<b>100%</b>
Certificate 60 or More Units	Female	10	63%	17	55%	14	64%	19	79%	5	45%	-50%	63%
	Male	6	38%	14	45%	8	36%	5	21%	6	55%	0%	38%
	Unreported	0	0%	0	0%	0	0%	0	0%	0	0%	--	0%
	<b>Total</b>	<b>16</b>	<b>100%</b>	<b>31</b>	<b>100%</b>	<b>22</b>	<b>100%</b>	<b>24</b>	<b>100%</b>	<b>11</b>	<b>100%</b>	<b>-31%</b>	<b>100%</b>
Certificate 30 to 59 Units	Female	220	48%	211	53%	222	56%	272	53%	348	51%	58%	52%
	Male	241	52%	186	47%	176	44%	238	47%	329	49%	37%	48%
	Unreported	0	0%	0	0%	0	0%	1	0%	0	0%	--	0%
	<b>Total</b>	<b>461</b>	<b>100%</b>	<b>397</b>	<b>100%</b>	<b>398</b>	<b>100%</b>	<b>511</b>	<b>100%</b>	<b>677</b>	<b>100%</b>	<b>47%</b>	<b>100%</b>
Certificate 29 or Fewer Units	Female	250	37%	277	45%	245	41%	222	38%	247	46%	-1%	41%
	Male	420	63%	338	55%	350	59%	364	62%	290	54%	-31%	59%
	Unreported	0	0%	1	0%	0	0%	0	0%	0	0%	--	0%
	<b>Total</b>	<b>670</b>	<b>100%</b>	<b>616</b>	<b>100%</b>	<b>595</b>	<b>100%</b>	<b>586</b>	<b>100%</b>	<b>537</b>	<b>100%</b>	<b>-20%</b>	<b>100%</b>
CE Certificate of Completion	Female	183	31%	225	50%	284	49%	572	49%	447	48%	144%	46%
	Male	411	69%	223	50%	296	51%	600	51%	475	51%	16%	54%
	Unreported	0	0%	0	0%	1	0%	5	0%	2	0%	--	0%
	<b>Total</b>	<b>594</b>	<b>100%</b>	<b>448</b>	<b>100%</b>	<b>581</b>	<b>100%</b>	<b>1,177</b>	<b>100%</b>	<b>924</b>	<b>100%</b>	<b>56%</b>	<b>100%</b>
GED Certificate	Female	102	51%	100	48%	96	49%	123	50%	87	44%	-15%	48%
	Male	97	49%	110	52%	100	51%	125	50%	108	55%	11%	51%
	Unreported	0	0%	0	0%	0	0%	0	0%	1	1%	--	0%
	<b>Total</b>	<b>199</b>	<b>100%</b>	<b>210</b>	<b>100%</b>	<b>196</b>	<b>100%</b>	<b>248</b>	<b>100%</b>	<b>196</b>	<b>100%</b>	<b>-2%</b>	<b>100%</b>
High School Diploma	Female	168	47%	210	44%	227	46%	290	49%	201	45%	20%	47%
	Male	187	53%	262	56%	261	53%	298	51%	243	54%	30%	53%
	Unreported	1	0%	0	0%	1	0%	0	0%	3	1%	200%	0%
	<b>Total</b>	<b>356</b>	<b>100%</b>	<b>472</b>	<b>100%</b>	<b>489</b>	<b>100%</b>	<b>588</b>	<b>100%</b>	<b>447</b>	<b>100%</b>	<b>26%</b>	<b>100%</b>
<b>Grand Total</b>		<b>4,714</b>	<b>100%</b>	<b>4,383</b>	<b>100%</b>	<b>4,351</b>	<b>100%</b>	<b>5,258</b>	<b>100%</b>	<b>4,849</b>	<b>100%</b>	<b>3%</b>	<b>100%</b>

Source: SDCCD Information System

## SDCCD Section III: Student Outcomes (Annual Awards Conferred)

**Annual Awards Conferred by Ethnicity:** The number of associate degrees conferred within all colleges in the district decreased for all ethnic groups except for American Indian and Latino students, which increased 11% and 1%, respectively, between 2005/06 and 2009/10. With the exception of Filipino students, the number of certificates of completion conferred at Continuing Education increased for all ethnic groups between 2005/06 and 2009/10. From 2005/06 to 2009/10, White students consistently received the most awards, followed by Latino students, and then Asian/Pacific Islander students across all award categories within all colleges in the district. The pattern of data was slightly different for Continuing Education award categories. For Continuing Education award categories, Latino students generally received the most awards followed by White students across all award categories. These trends reflect the fact that these three ethnicities (White, Latino & Asian/Pacific Islanders students) constitute the greatest proportions of the districtwide student headcount population.

Figure 3.15.1. SDCCD Annual AA/AS Degrees by Ethnicity



## SDCCD Section III: Student Outcomes (Annual Awards Conferred)

Figure 3.15.2. SDCCD Annual Certificates 60 or More Units by Ethnicity

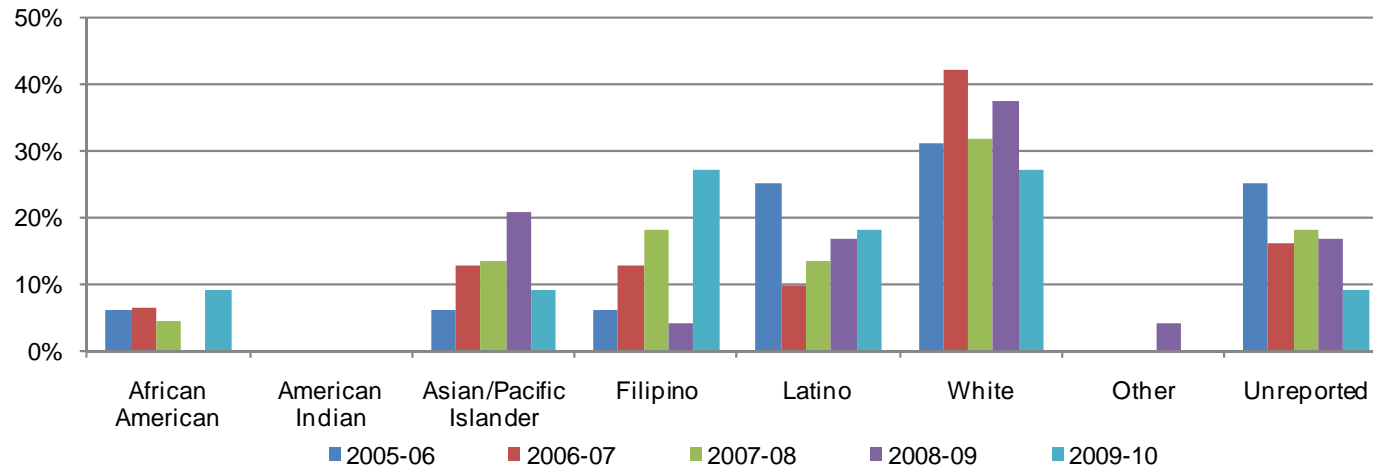
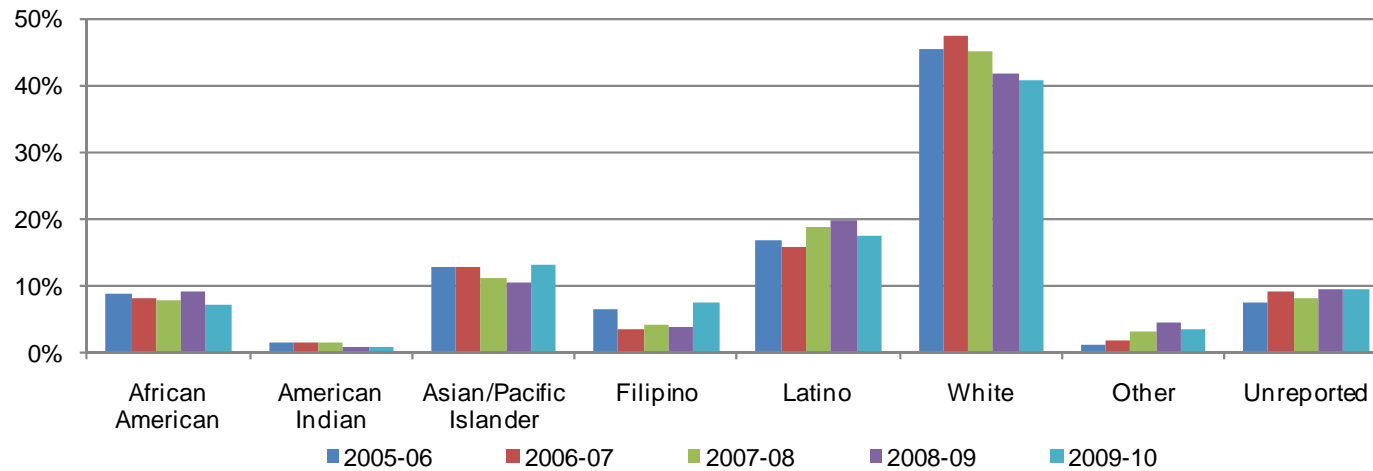


Figure 3.15.3. SDCCD Annual Certificates 30 to 59 Units by Ethnicity



## SDCCD Section III: Student Outcomes (Annual Awards Conferred)

Figure 3.15.4. SDCCD Annual Certificates 29 or Fewer Units by Ethnicity

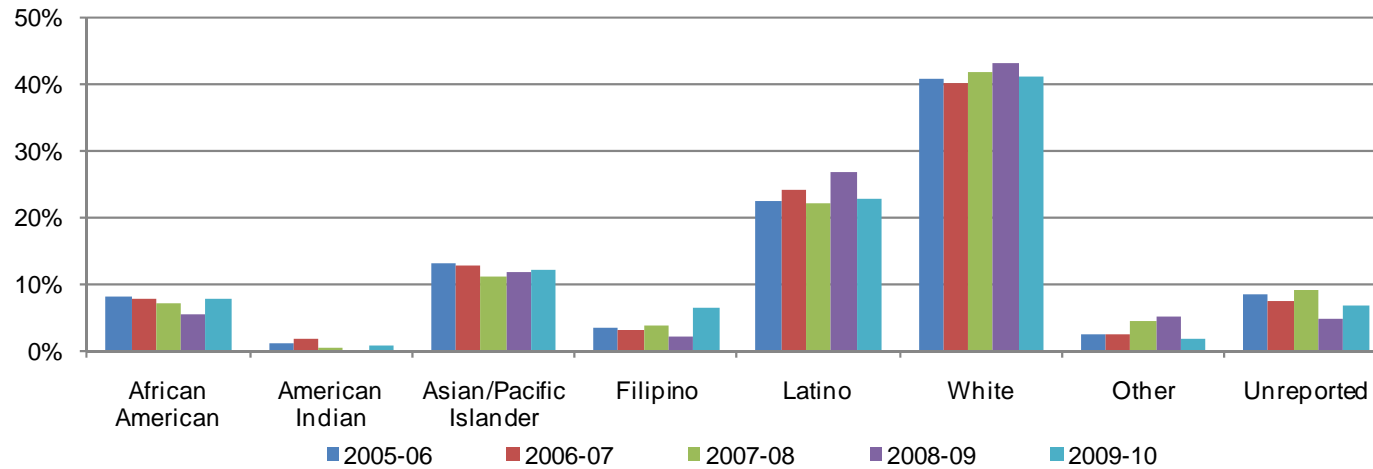
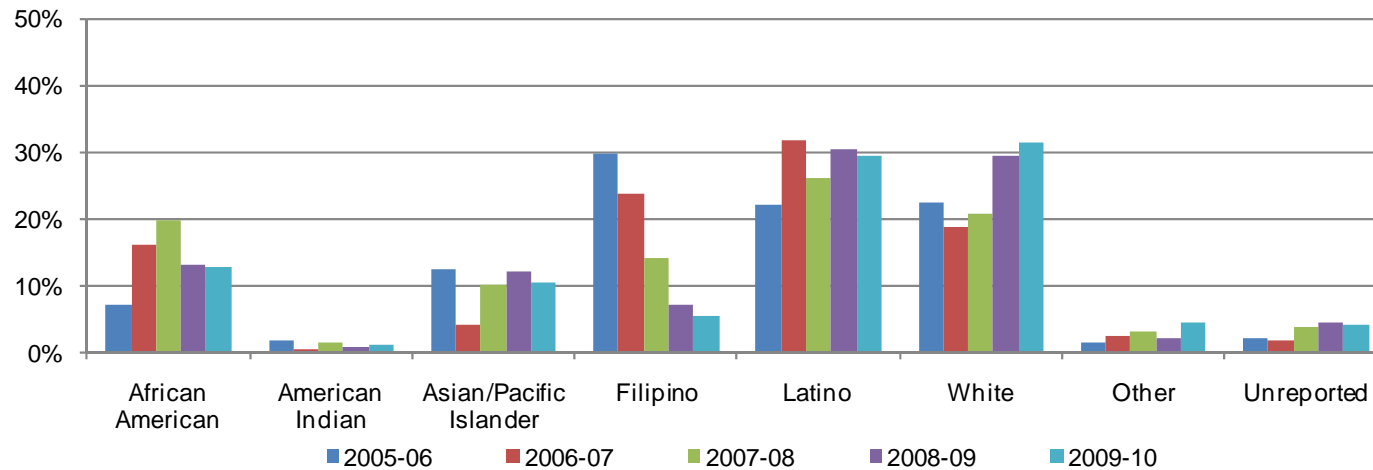


Figure 3.15.5. SDCCD Annual CE Certificates of Completion by Ethnicity



## SDCCD Section III: Student Outcomes (Annual Awards Conferred)

Figure 3.15.6. SDCCD Annual GED Certificates by Ethnicity

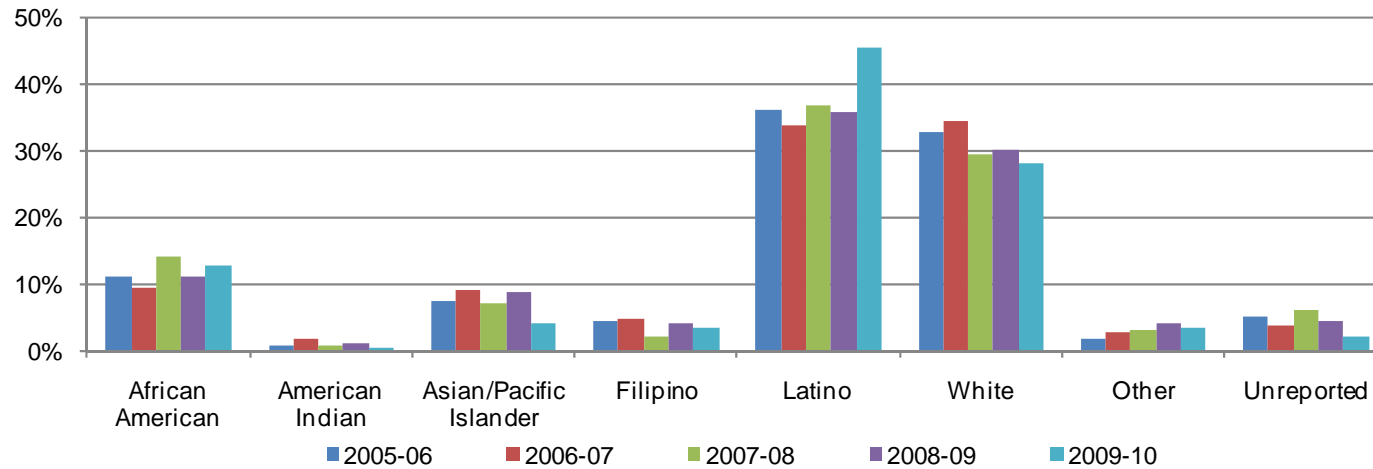
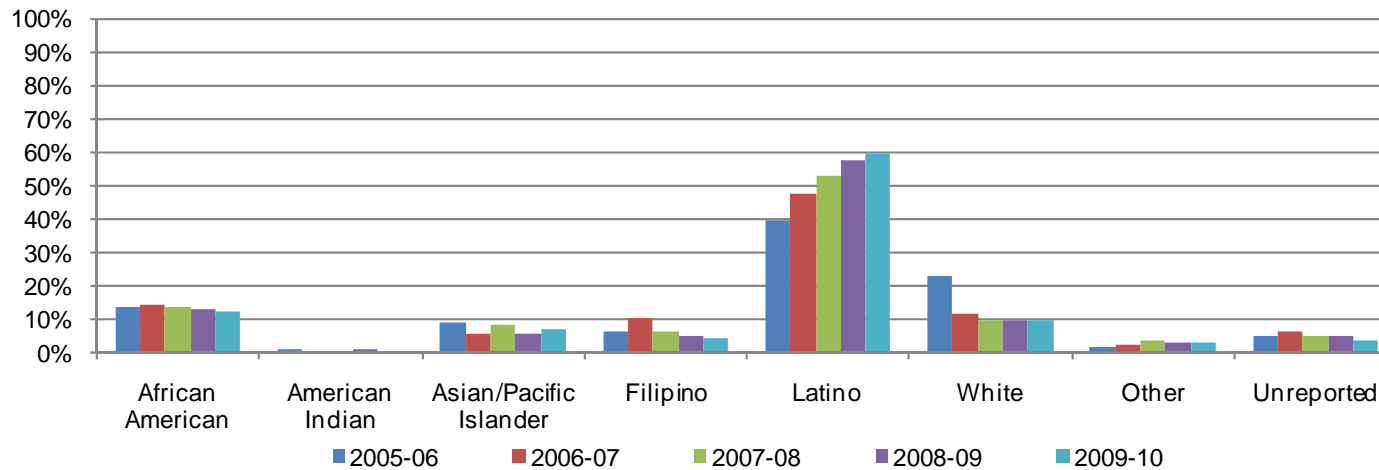


Figure 3.15.7. SDCCD Annual High School Diplomas by Ethnicity



## SDCCD Section III: Student Outcomes (Annual Awards Conferred)

Table 3.15. SDCCD Annual Awards Conferred by Ethnicity

		2005-06		2006-07		2007-08		2008-09		2009-10		% Change 05/06-09/10	Districtwide Average 05/06-09/10
AA/AS Degree	African American	211	9%	182	8%	194	9%	149	7%	165	8%	-22%	8%
	American Indian	18	1%	25	1%	17	1%	15	1%	20	1%	11%	1%
	Asian/Pacific Islander	297	12%	281	13%	283	14%	260	12%	253	12%	-15%	13%
	Filipino	175	7%	152	7%	137	7%	138	6%	148	7%	-15%	7%
	Latino	423	17%	395	18%	420	20%	408	19%	427	21%	1%	19%
	White	993	41%	881	40%	765	37%	863	41%	795	39%	-20%	40%
	Other	74	3%	80	4%	76	4%	86	4%	87	4%	18%	4%
	Unreported	227	9%	213	10%	178	9%	205	10%	162	8%	-29%	9%
	<b>Total</b>	<b>2,418</b>	<b>100%</b>	<b>2,209</b>	<b>100%</b>	<b>2,070</b>	<b>100%</b>	<b>2,124</b>	<b>100%</b>	<b>2,057</b>	<b>100%</b>	<b>-15%</b>	<b>100%</b>
Certificate 60 or More Units	African American	1	6%	2	6%	1	5%	0	0%	1	9%	0%	5%
	American Indian	0	0%	0	0%	0	0%	0	0%	0	0%	--	0%
	Asian/Pacific Islander	1	6%	4	13%	3	14%	5	21%	1	9%	0%	13%
	Filipino	1	6%	4	13%	4	18%	1	4%	3	27%	200%	13%
	Latino	4	25%	3	10%	3	14%	4	17%	2	18%	-50%	15%
	White	5	31%	13	42%	7	32%	9	38%	3	27%	-40%	36%
	Other	0	0%	0	0%	0	0%	1	4%	0	0%	--	1%
	Unreported	4	25%	5	16%	4	18%	4	17%	1	9%	-75%	17%
	<b>Total</b>	<b>16</b>	<b>100%</b>	<b>31</b>	<b>100%</b>	<b>22</b>	<b>100%</b>	<b>24</b>	<b>100%</b>	<b>11</b>	<b>100%</b>	<b>-31%</b>	<b>100%</b>

Source: SDCCD Information System

## SDCCD Section III: Student Outcomes (Annual Awards Conferred)

Table 3.15. SDCCD Annual Awards Conferred by Ethnicity (Continued)

		2005-06		2006-07		2007-08		2008-09		2009-10		% Change 05/06-09/10	Districtwide Average 05/06-09/10
Certificate 30 to 59 Units	African American	40	9%	32	8%	31	8%	47	9%	48	7%	20%	8%
	American Indian	7	2%	6	2%	6	2%	4	1%	6	1%	-14%	1%
	Asian/Pacific Islander	59	13%	51	13%	44	11%	54	11%	90	13%	53%	12%
	Filipino	30	7%	14	4%	17	4%	20	4%	50	7%	67%	5%
	Latino	77	17%	63	16%	75	19%	101	20%	119	18%	55%	18%
	White	209	45%	188	47%	179	45%	213	42%	276	41%	32%	44%
	Other	5	1%	7	2%	13	3%	23	5%	23	3%	360%	3%
	Unreported	34	7%	36	9%	33	8%	49	10%	65	10%	91%	9%
	<b>Total</b>	<b>461</b>	<b>100%</b>	<b>397</b>	<b>100%</b>	<b>398</b>	<b>100%</b>	<b>511</b>	<b>100%</b>	<b>677</b>	<b>100%</b>	<b>47%</b>	<b>100%</b>
Certificate 29 or Fewer Units	African American	54	8%	48	8%	42	7%	32	5%	42	8%	-22%	7%
	American Indian	7	1%	12	2%	3	1%	2	0%	4	1%	-43%	1%
	Asian/Pacific Islander	89	13%	80	13%	67	11%	70	12%	66	12%	-26%	12%
	Filipino	24	4%	20	3%	23	4%	13	2%	35	7%	46%	4%
	Latino	150	22%	149	24%	132	22%	156	27%	123	23%	-18%	24%
	White	273	41%	246	40%	248	42%	253	43%	220	41%	-19%	41%
	Other	17	3%	15	2%	26	4%	31	5%	10	2%	-41%	3%
	Unreported	56	8%	46	7%	54	9%	29	5%	37	7%	-34%	7%
	<b>Total</b>	<b>670</b>	<b>100%</b>	<b>616</b>	<b>100%</b>	<b>595</b>	<b>100%</b>	<b>586</b>	<b>100%</b>	<b>537</b>	<b>100%</b>	<b>-20%</b>	<b>100%</b>

Source: SDCCD Information System

## SDCCD Section III: Student Outcomes (Annual Awards Conferred)

Table 3.15. SDCCD Annual Awards Conferred by Ethnicity (Continued)

		2005-06		2006-07		2007-08		2008-09		2009-10		% Change 05/06-09/10	Districtwide Average 05/06-09/10
CE Certificates of Completion	African American	42	7%	72	16%	116	20%	156	13%	117	13%	179%	14%
	American Indian	11	2%	3	1%	9	2%	9	1%	12	1%	9%	1%
	Asian/Pacific Islander	75	13%	19	4%	59	10%	142	12%	98	11%	31%	11%
	Filipino	177	30%	107	24%	83	14%	84	7%	52	6%	-71%	14%
	Latino	132	22%	142	32%	152	26%	360	31%	271	29%	105%	28%
	White	133	22%	85	19%	121	21%	348	30%	292	32%	120%	26%
	Other	10	2%	11	2%	18	3%	26	2%	43	5%	330%	3%
	Unreported	14	2%	9	2%	23	4%	52	4%	39	4%	179%	4%
	<b>Total</b>	<b>594</b>	<b>100%</b>	<b>448</b>	<b>100%</b>	<b>581</b>	<b>100%</b>	<b>1,177</b>	<b>100%</b>	<b>924</b>	<b>100%</b>	<b>56%</b>	<b>100%</b>
GED Certificate	African American	22	11%	20	10%	28	14%	28	11%	25	13%	14%	12%
	American Indian	2	1%	4	2%	2	1%	3	1%	1	1%	-50%	1%
	Asian/Pacific Islander	15	8%	19	9%	14	7%	22	9%	8	4%	-47%	7%
	Filipino	9	5%	10	5%	4	2%	10	4%	7	4%	-22%	4%
	Latino	72	36%	71	34%	72	37%	89	36%	89	45%	24%	37%
	White	65	33%	72	34%	58	30%	75	30%	55	28%	-15%	31%
	Other	4	2%	6	3%	6	3%	10	4%	7	4%	75%	3%
	Unreported	10	5%	8	4%	12	6%	11	4%	4	2%	-60%	4%
	<b>Total</b>	<b>199</b>	<b>100%</b>	<b>210</b>	<b>100%</b>	<b>196</b>	<b>100%</b>	<b>248</b>	<b>100%</b>	<b>196</b>	<b>100%</b>	<b>-2%</b>	<b>100%</b>
High School Diploma	African American	49	14%	69	15%	66	13%	78	13%	54	12%	10%	13%
	American Indian	4	1%	3	1%	2	0%	5	1%	2	0%	-50%	1%
	Asian/Pacific Islander	33	9%	28	6%	41	8%	34	6%	31	7%	-6%	7%
	Filipino	22	6%	49	10%	30	6%	30	5%	20	4%	-9%	6%
	Latino	141	40%	225	48%	259	53%	337	57%	266	60%	89%	52%
	White	81	23%	56	12%	47	10%	57	10%	43	10%	-47%	12%
	Other	7	2%	12	3%	19	4%	19	3%	14	3%	100%	3%
	Unreported	19	5%	30	6%	25	5%	28	5%	17	4%	-11%	5%
	<b>Total</b>	<b>356</b>	<b>100%</b>	<b>472</b>	<b>100%</b>	<b>489</b>	<b>100%</b>	<b>588</b>	<b>100%</b>	<b>447</b>	<b>100%</b>	<b>26%</b>	<b>100%</b>
<b>Grand Total</b>	<b>4,714</b>	<b>100%</b>	<b>4,383</b>	<b>100%</b>	<b>4,351</b>	<b>100%</b>	<b>5,258</b>	<b>100%</b>	<b>4,849</b>	<b>100%</b>	<b>3%</b>	<b>100%</b>	

Source: SDCCD Information System



## SDCCD Section III: Student Outcomes (Annual Awards Conferred)

**Annual Awards Conferred by Age:** Between 2005/06 and 2009/10, students between ages 18 and 24 years old received the highest number of associate degrees (39%) on average, followed by the 25-29 year old age group (26%). The pattern of data was different for Continuing Education award categories. At Continuing Education, on average, students between 30-39 and 40-49 years old consistently displayed a trend of receiving the highest number of awards.

Figure 3.16.1. SDCCD Annual AA/AS Degrees by Age

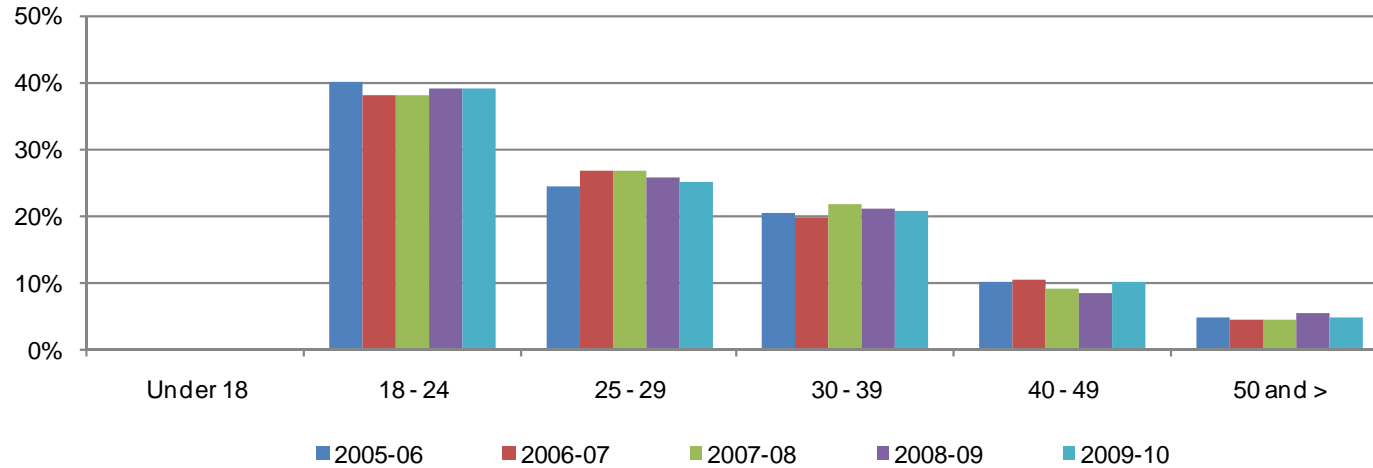
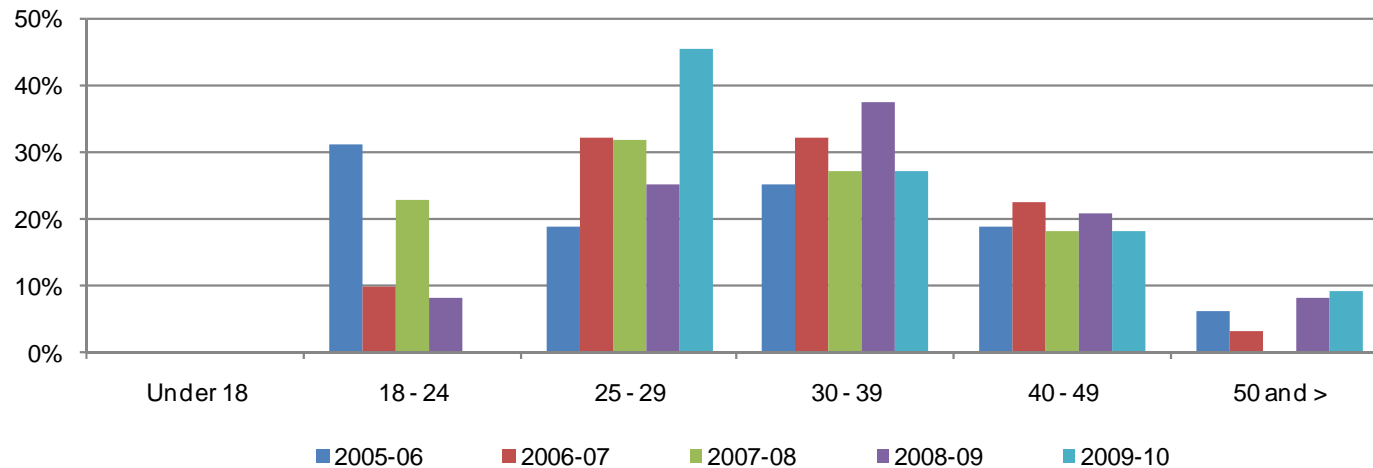


Figure 3.16.2. SDCCD Annual Certificates 60 or More Units by Age

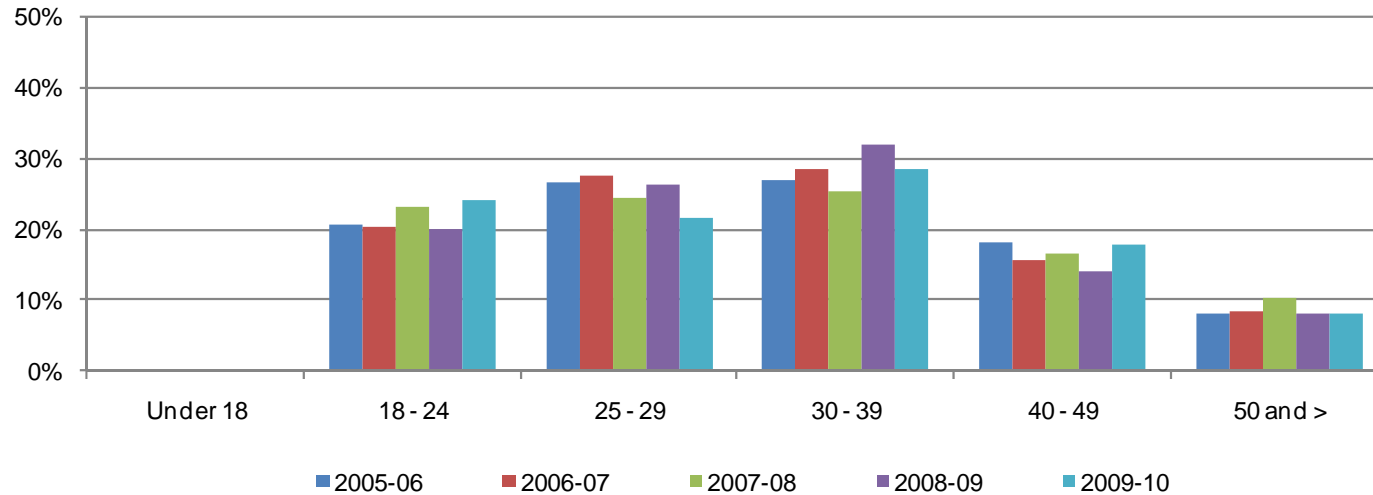


## SDCCD Section III: Student Outcomes (Annual Awards Conferred)

Figure 3.16.3. SDCCD Annual Certificates 30 to 59 Units by Age



Figure 3.16.4. SDCCD Annual Certificates 29 or Fewer Units by Age



## SDCCD Section III: Student Outcomes (Annual Awards Conferred)

Figure 3.16.5. SDCCD Annual CE Certificates of Completion by Age

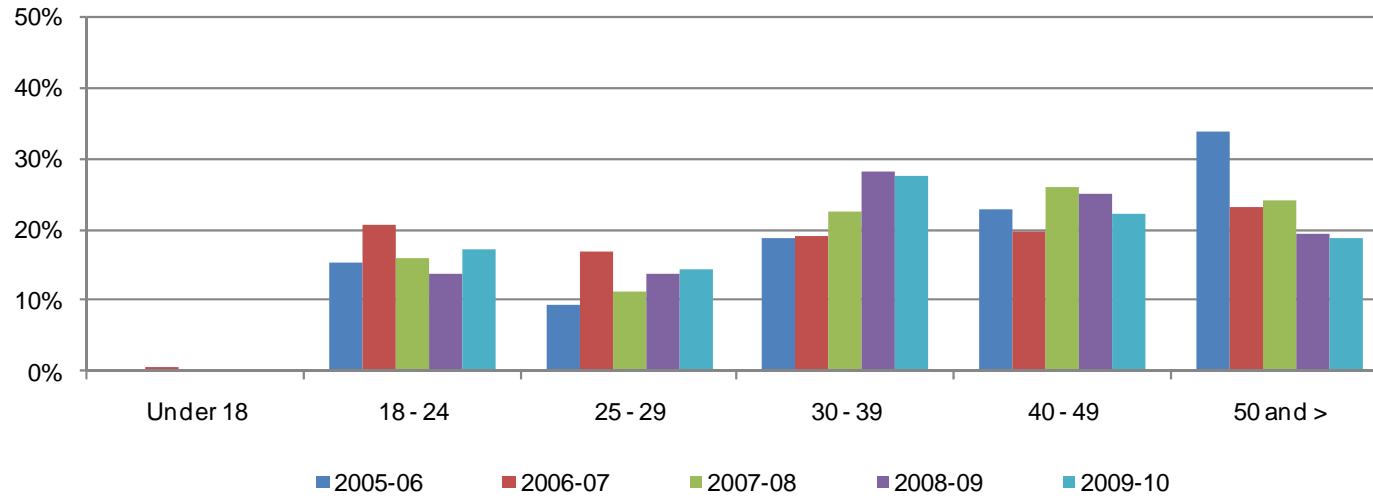
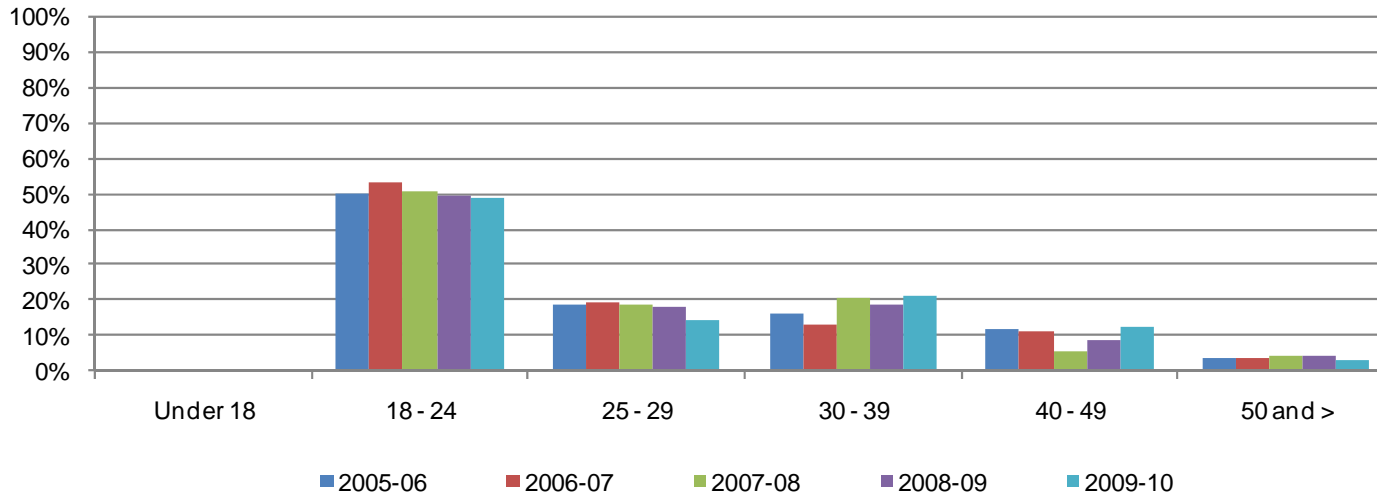
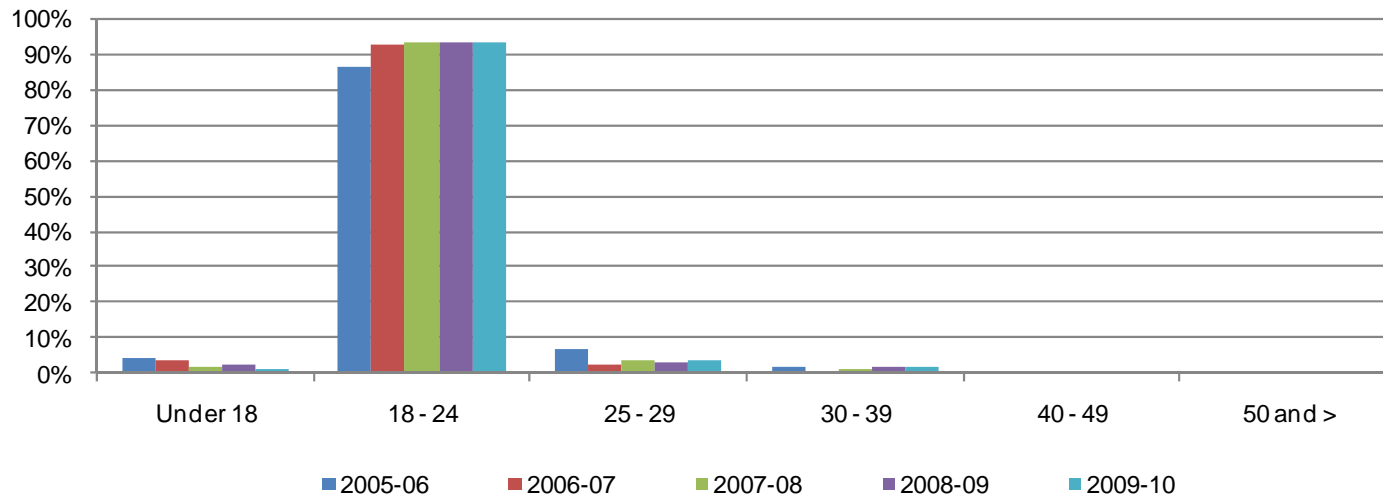


Figure 3.16.6. SDCCD Annual GED Certificates by Age



## SDCCD Section III: Student Outcomes (Annual Awards Conferred)

Figure 3.16.7. SDCCD Annual High School Diplomas by Age



## SDCCD Section III: Student Outcomes (Annual Awards Conferred)

Table 3.16. SDCCD Annual Awards Conferred by Age

		2005-06		2006-07		2007-08		2008-09		2009-10		% Change 05/06-09/10	Districtwide Average 05/06-09/10
AA/AS Degree	Under 18	0	0%	1	0%	0	0%	0	0%	2	0%	--	0%
	18 - 24	971	40%	845	38%	785	38%	828	39%	803	39%	-17%	39%
	25 - 29	592	24%	592	27%	552	27%	548	26%	514	25%	-13%	26%
	30 - 39	491	20%	440	20%	448	22%	449	21%	426	21%	-13%	21%
	40 - 49	245	10%	233	11%	192	9%	183	9%	211	10%	-14%	10%
	50 and >	119	5%	98	4%	93	4%	116	5%	101	5%	-15%	5%
	<b>Total</b>	<b>2,418</b>	<b>100%</b>	<b>2,209</b>	<b>100%</b>	<b>2,070</b>	<b>100%</b>	<b>2,124</b>	<b>100%</b>	<b>2,057</b>	<b>100%</b>	<b>-15%</b>	<b>100%</b>
Certificate 60 or More Units	Under 18	0	0%	0	0%	0	0%	0	0%	0	0%	--	0%
	18 - 24	5	31%	3	10%	5	23%	2	8%	0	0%	-100%	14%
	25 - 29	3	19%	10	32%	7	32%	6	25%	5	45%	67%	30%
	30 - 39	4	25%	10	32%	6	27%	9	38%	3	27%	-25%	31%
	40 - 49	3	19%	7	23%	4	18%	5	21%	2	18%	-33%	20%
	50 and >	1	6%	1	3%	0	0%	2	8%	1	9%	0%	5%
	<b>Total</b>	<b>16</b>	<b>100%</b>	<b>31</b>	<b>100%</b>	<b>22</b>	<b>100%</b>	<b>24</b>	<b>100%</b>	<b>11</b>	<b>100%</b>	<b>-31%</b>	<b>100%</b>
Certificate 30 to 59 Units	Under 18	0	0%	0	0%	0	0%	0	0%	0	0%	--	0%
	18 - 24	82	18%	62	16%	68	17%	119	23%	205	30%	150%	22%
	25 - 29	96	21%	91	23%	89	22%	114	22%	179	26%	86%	23%
	30 - 39	137	30%	115	29%	121	30%	135	26%	135	20%	-1%	26%
	40 - 49	100	22%	84	21%	84	21%	82	16%	88	13%	-12%	18%
	50 and >	46	10%	45	11%	36	9%	61	12%	70	10%	52%	11%
	<b>Total</b>	<b>461</b>	<b>100%</b>	<b>397</b>	<b>100%</b>	<b>398</b>	<b>100%</b>	<b>511</b>	<b>100%</b>	<b>677</b>	<b>100%</b>	<b>47%</b>	<b>100%</b>
Certificate 29 or Fewer Units	Under 18	0	0%	0	0%	0	0%	0	0%	0	0%	--	0%
	18 - 24	138	21%	125	20%	138	23%	117	20%	129	24%	-7%	22%
	25 - 29	177	26%	169	27%	146	25%	153	26%	116	22%	-34%	25%
	30 - 39	180	27%	175	28%	151	25%	186	32%	153	28%	-15%	28%
	40 - 49	121	18%	96	16%	98	16%	83	14%	96	18%	-21%	16%
	50 and >	54	8%	51	8%	62	10%	47	8%	43	8%	-20%	9%
	<b>Total</b>	<b>670</b>	<b>100%</b>	<b>616</b>	<b>100%</b>	<b>595</b>	<b>100%</b>	<b>586</b>	<b>100%</b>	<b>537</b>	<b>100%</b>	<b>-20%</b>	<b>100%</b>

Source: SDCCD Information System

## SDCCD Section III: Student Outcomes (Annual Awards Conferred)

Table 3.16. SDCCD Annual Awards Conferred by Age (Continued)

		2005-06		2006-07		2007-08		2008-09		2009-10		% Change 05/06-09/10	Districtwide Average 05/06-09/10
CE Certificate of Completion	Under 18	0	0%	3	1%	1	0%	0	0%	0	0%	--	0%
	18 - 24	91	15%	92	21%	93	16%	162	14%	159	17%	75%	16%
	25 - 29	55	9%	76	17%	66	11%	161	14%	132	14%	140%	13%
	30 - 39	111	19%	85	19%	131	23%	332	28%	254	27%	129%	25%
	40 - 49	136	23%	88	20%	151	26%	295	25%	205	22%	51%	23%
	50 and >	201	34%	104	23%	139	24%	227	19%	174	19%	-13%	23%
	<b>Total</b>	<b>594</b>	<b>100%</b>	<b>448</b>	<b>100%</b>	<b>581</b>	<b>100%</b>	<b>1,177</b>	<b>100%</b>	<b>924</b>	<b>100%</b>	<b>56%</b>	<b>100%</b>
GED Certificate	Under 18	0	0%	0	0%	0	0%	1	0%	0	0%	--	0%
	18 - 24	100	50%	111	53%	99	51%	123	50%	96	49%	-4%	50%
	25 - 29	37	19%	40	19%	37	19%	45	18%	28	14%	-24%	18%
	30 - 39	32	16%	28	13%	41	21%	47	19%	42	21%	31%	18%
	40 - 49	23	12%	23	11%	11	6%	21	8%	24	12%	4%	10%
	50 and >	7	4%	8	4%	8	4%	11	4%	6	3%	-14%	4%
	<b>Total</b>	<b>199</b>	<b>100%</b>	<b>210</b>	<b>100%</b>	<b>196</b>	<b>100%</b>	<b>248</b>	<b>100%</b>	<b>196</b>	<b>100%</b>	<b>-2%</b>	<b>100%</b>
High School Diploma	Under 18	15	4%	19	4%	9	2%	13	2%	5	1%	-67%	3%
	18 - 24	307	86%	437	93%	455	93%	547	93%	417	93%	36%	92%
	25 - 29	24	7%	12	3%	18	4%	17	3%	16	4%	-33%	4%
	30 - 39	7	2%	4	1%	5	1%	11	2%	8	2%	14%	1%
	40 - 49	2	1%	0	0%	1	0%	0	0%	1	0%	-50%	0%
	50 and >	1	0%	0	0%	1	0%	0	0%	0	0%	-100%	0%
	<b>Total</b>	<b>356</b>	<b>100%</b>	<b>472</b>	<b>100%</b>	<b>489</b>	<b>100%</b>	<b>588</b>	<b>100%</b>	<b>447</b>	<b>100%</b>	<b>26%</b>	<b>100%</b>
<b>Grand Total</b>	<b>4,714</b>	<b>100%</b>	<b>4,383</b>	<b>100%</b>	<b>4,351</b>	<b>100%</b>	<b>5,258</b>	<b>100%</b>	<b>4,849</b>	<b>100%</b>	<b>3%</b>	<b>100%</b>	

Source: SDCCD Information System

## SDCCD Section III: Student Outcomes (Annual Transfer Volume)

**Annual Transfer Volume:** The annual transfer volume for all colleges in the district increased 59%, from 1,837 in 2005/06 to 2,915 in 2009/10.

Figure 3.17. All Colleges Overall Annual Transfers

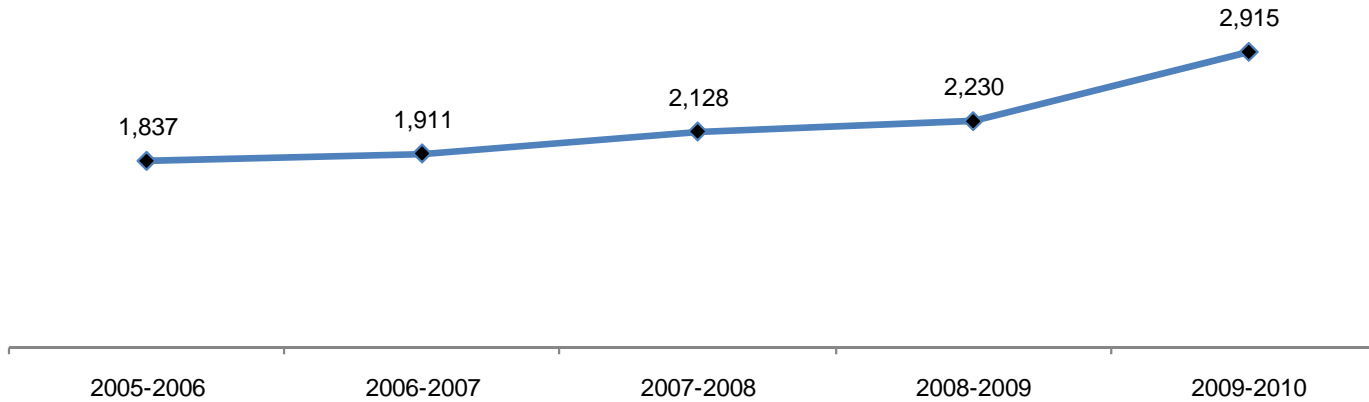


Table 3.17. All Colleges Overall Annual Transfers

	2005-2006	2006-2007	2007-2008	2008-2009	2009-2010	% Change 05/06-09/10
<b>Total</b>	1,837	1,911	2,128	2,230	2,915	59%

Source: SDCCD Information System

## SDCCD Section III: Student Outcomes (Annual Transfer Volume)

**Annual Transfer Volume by Gender:** Between 2005/06 and 2009/10, female students (52%) had a higher transfer volume, on average, compared to their male student (48%) counterpart. The transfer volume for both male and female students increased between 2005/06 and 2009/10 (53% & 64%, respectively).

Figure 3.18. All Colleges Annual Transfers by Gender

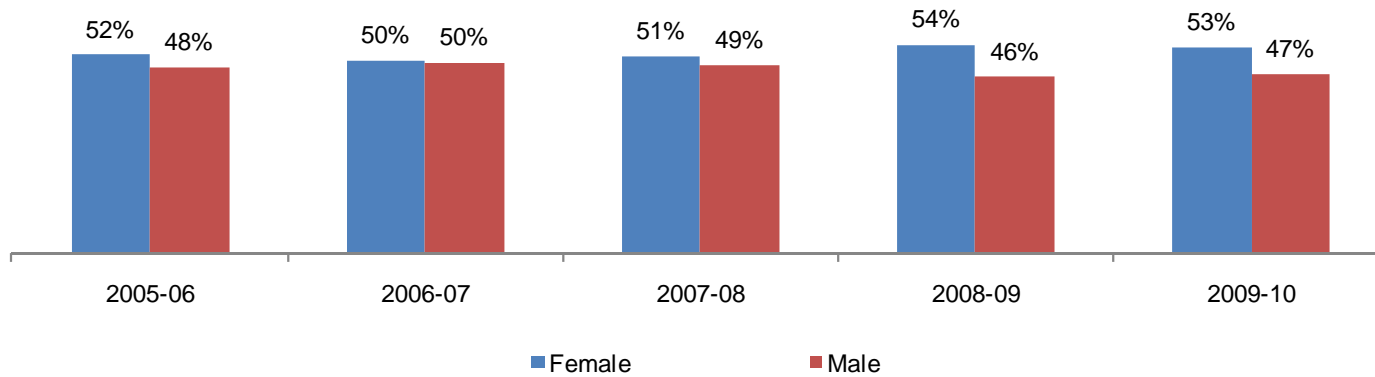


Table 3.18. All Colleges Annual Transfers by Gender

	2005-06		2006-07		2007-08		2008-09		2009-10		% Change 05/06-09/10	All Colleges Average 05/06-09/10
Female	947	52%	961	50%	1,087	51%	1,208	54%	1,557	53%	64%	52%
Male	889	48%	950	50%	1,040	49%	1,021	46%	1,357	47%	53%	48%
Unreported	1	0%	0	0%	1	0%	1	0%	1	0%	0%	0%
<b>Total</b>	<b>1,837</b>	<b>100%</b>	<b>1,911</b>	<b>100%</b>	<b>2,128</b>	<b>100%</b>	<b>2,230</b>	<b>100%</b>	<b>2,915</b>	<b>100%</b>	<b>59%</b>	<b>100%</b>

Source: SDCCD Information System



## SDCCD Section III: Student Outcomes (Annual Transfer Volume)

**Annual Transfer Volume by Ethnicity:** Of those students who transferred from all colleges in the district, nearly half were White students (48%) on average. Both Latino students (15%) and Asian/Pacific Islander students (13%) had the next highest transfer volume between 2005/06 and 2009/10. All the ethnic groups displayed an increased trend in transfer volume. Latino students increased the most by 117%, from 223 in 2005/06 to 483 in 2009/10.

Figure 3.19. All Colleges Annual Transfers by Ethnicity

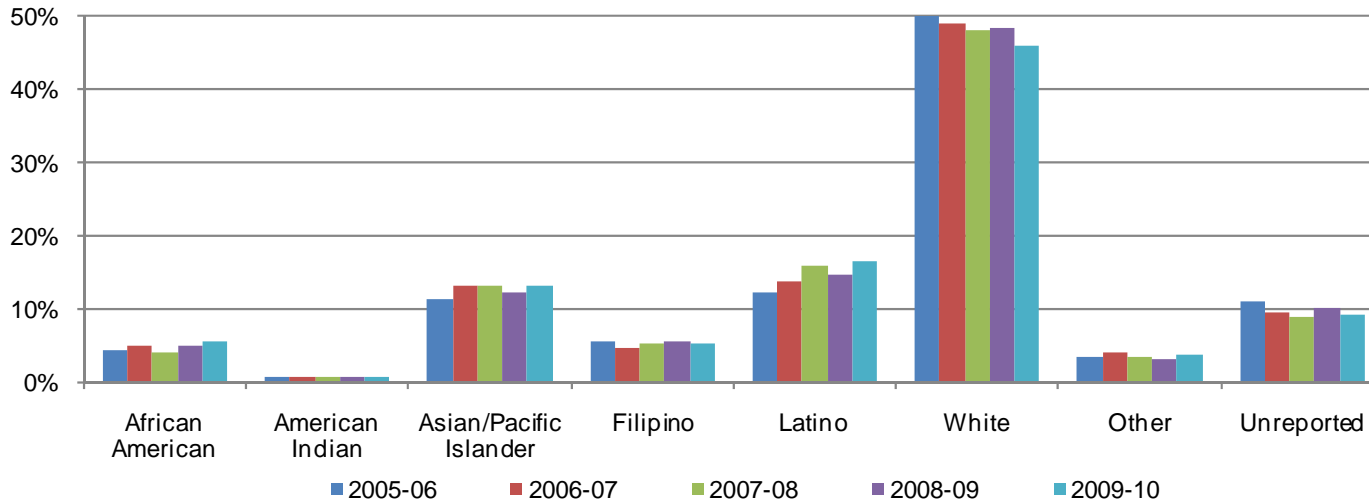


Table 3.19. All Colleges Annual Transfers by Ethnicity

	2005-06		2006-07		2007-08		2008-09		2009-10		% Change 05/06-09/10	All Colleges Average 05/06-09/10
African American	80	4%	94	5%	88	4%	110	5%	162	6%	103%	5%
American Indian	15	1%	15	1%	18	1%	16	1%	20	1%	33%	1%
Asian/Pacific Islander	208	11%	253	13%	282	13%	274	12%	380	13%	83%	13%
Filipino	102	6%	91	5%	114	5%	124	6%	151	5%	48%	5%
Latino	223	12%	265	14%	340	16%	325	15%	483	17%	117%	15%
White	941	51%	936	49%	1,020	48%	1,081	48%	1,342	46%	43%	48%
Other	66	4%	77	4%	75	4%	73	3%	106	4%	61%	4%
Unreported	202	11%	180	9%	191	9%	227	10%	271	9%	34%	10%
<b>Total</b>	<b>1,837</b>	<b>100%</b>	<b>1,911</b>	<b>100%</b>	<b>2,128</b>	<b>100%</b>	<b>2,230</b>	<b>100%</b>	<b>2,915</b>	<b>100%</b>	<b>59%</b>	<b>100%</b>

Source: SDCCD Information System

## SDCCD Section III: Student Outcomes (Annual Transfer Volume)

**Annual Transfer Volume by Age:** The age groups with the highest transfer volume, on average, were students ages 18-24 (64%), students between ages 25 and 29 years old (24%), and students ages 30 to 39 years old (9%) between 2005/06 and 2009/10. All of the age groups displayed an increased trend in transfer volume, with students between ages 30 and 39 years old increasing 122%, from 148 in 2005/06 to 328 in 2009/10.

Figure 3.20. All Colleges Annual Transfers by Age

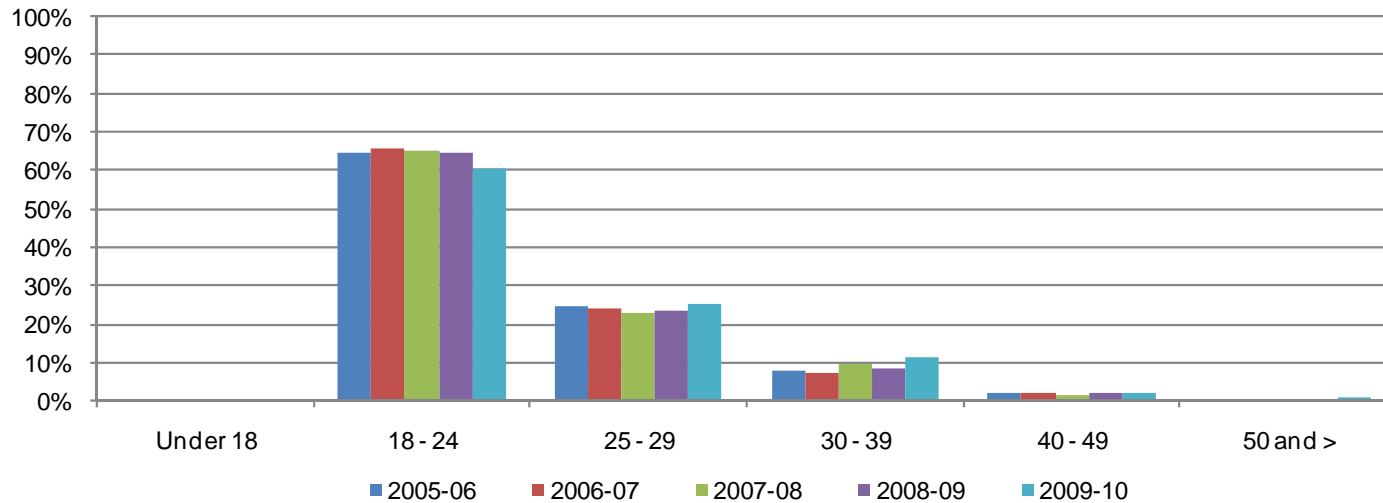


Table 3.20. All Colleges Annual Transfers by Age

	2005-06		2006-07		2007-08		2008-09		2009-10		% Change 05/06-09/10	All Colleges Average 05/06-09/10
Under 18	1	0%	1	0%	4	0%	0	0%	3	0%	0%	0%
18 - 24	1,187	65%	1,260	66%	1,383	65%	1,441	65%	1,758	60%	48%	64%
25 - 29	452	25%	457	24%	488	23%	531	24%	741	25%	64%	24%
30 - 39	148	8%	139	7%	202	9%	194	9%	328	11%	122%	9%
40 - 49	38	2%	41	2%	39	2%	53	2%	63	2%	66%	2%
50 and >	11	1%	13	1%	12	1%	11	0%	22	1%	100%	1%
Unreported	0	0%	0	0%	0	0%	0	0%	0	0%	0%	0%
<b>Total</b>	<b>1,837</b>	<b>100%</b>	<b>1,911</b>	<b>100%</b>	<b>2,128</b>	<b>100%</b>	<b>2,230</b>	<b>100%</b>	<b>2,915</b>	<b>100%</b>	<b>59%</b>	<b>100%</b>

Source: SDCCD Information System

## SDCCD Section III: Student Outcomes (Annual Transfer Volume)

**Annual Transfer Volume by CSU-UC/Private (In-State)/Out-of-State:** On average, nearly half of the all colleges in the district transfer volume were students who transferred into the California State University system (CSU) (47%), followed by the University of California system (UC) (21%), Out-Of State institutions (19%), and then In-State private institutions (13%). Students who transferred from all colleges in the district to an In-State private institution continued to show dramatic increases in transfer volume (212%), from 155 in 2005/06 to 483 in 2009/10.

Figure 3.21. All Colleges Annual Transfers by CSU-UC/Private (In-State)/Out-of-State

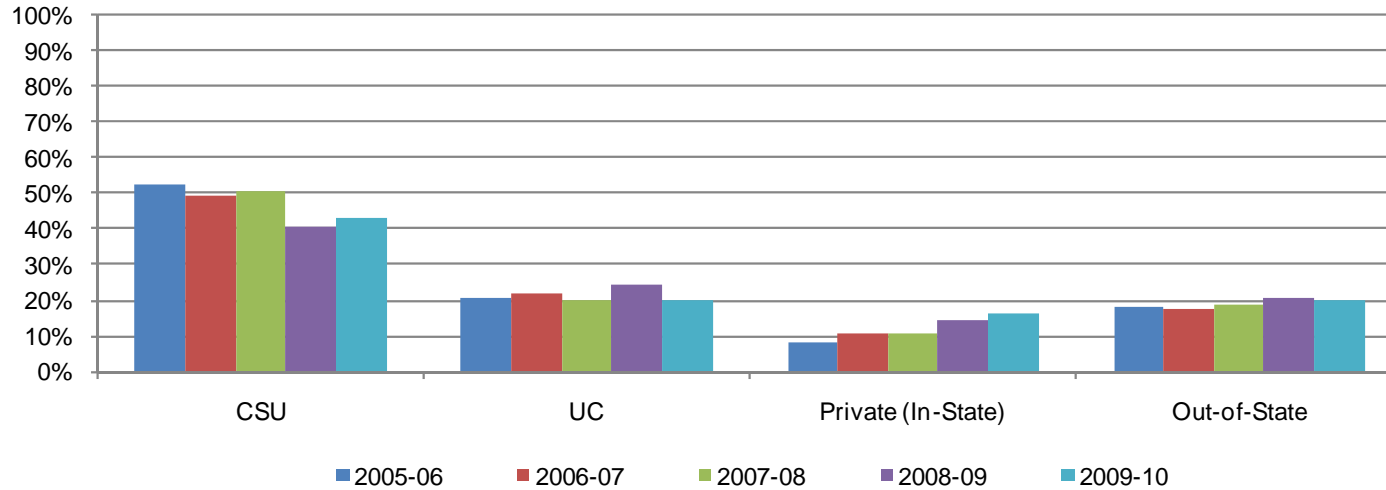


Table 3.21. All Colleges Annual Transfers by CSU-UC/Private (In-State)/Out-of-State

	2005-06		2006-07		2007-08		2008-09		2009-10		% Change 05/06-09/10	All College Average 05/06-09/10
CSU	962	52%	945	49%	1,071	50%	899	40%	1,264	43%	31%	47%
UC	381	21%	422	22%	425	20%	547	25%	577	20%	51%	21%
Private (In-State)	155	8%	208	11%	231	11%	323	14%	483	17%	212%	13%
Out-of-State	339	18%	336	18%	401	19%	461	21%	591	20%	74%	19%
<b>Total</b>	<b>1,837</b>	<b>100%</b>	<b>1,911</b>	<b>100%</b>	<b>2,128</b>	<b>100%</b>	<b>2,230</b>	<b>100%</b>	<b>2,915</b>	<b>100%</b>	<b>59%</b>	<b>100%</b>

Source: SDCCD Information System

Note: Out-of-State included both public and private 4-year institutions.

## SDCCD Section III: Student Outcomes (Annual Transfer Volume)

**Annual Transfer Volume by CSU/UC:** Of the total students who transferred from all colleges in the district (see table 3.17), 68% transferred into either the California State University (CSU) or University of California (UC) systems on average (47% & 21%, respectively). Of the total number of students who transferred to CSU or UC systems, the majority of students went to CSU (69%) and about one-third went to UC (31%) on average. Both the CSU and UC systems showed an increased trend in the number of students who transferred from all colleges in the district (31% & 51%, respectively) to their respective systems between 2005/06 and 2009/10.

Figure 3.22. All Colleges Annual Transfers by CSU/UC

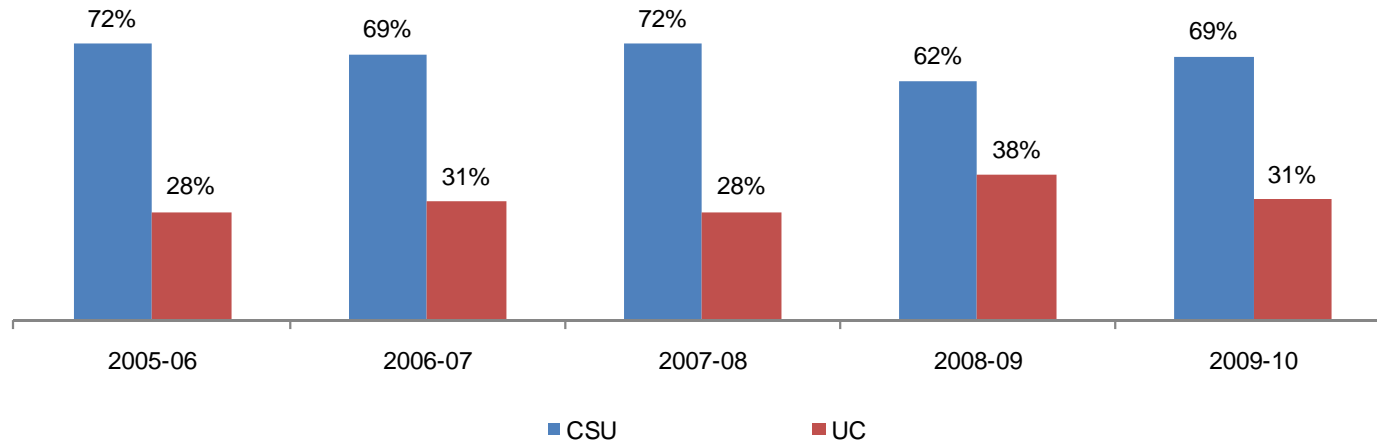


Table 3.22. All Colleges Annual Transfers by CSU/UC

	2005-06		2006-07		2007-08		2008-09		2009-10		% Change 05/06-09/10	All Colleges Average 05/06-09/10
CSU	962	72%	945	69%	1,071	72%	899	62%	1,264	69%	31%	69%
UC	381	28%	422	31%	425	28%	547	38%	577	31%	51%	31%
<b>Total</b>	<b>1,343</b>	<b>100%</b>	<b>1,367</b>	<b>100%</b>	<b>1,496</b>	<b>100%</b>	<b>1,446</b>	<b>100%</b>	<b>1,841</b>	<b>100%</b>	<b>37%</b>	<b>100%</b>

Source: SDCCD Information System

## SDCCD Section III: Student Outcomes (Annual Transfer Volume)

**Annual Transfer Volume by Institution Type:** Of those who transferred from all colleges within the district, on average, 22% transferred to a private institution and 78% transferred to a public institution. Both public and private institutions showed an increased trend in the number of students who transferred from all colleges within the district (36% & 192%, respectively) to their respective institutions between 2005/06 and 2009/10.

Figure 3.23. All Colleges Annual Transfers by Institution Type

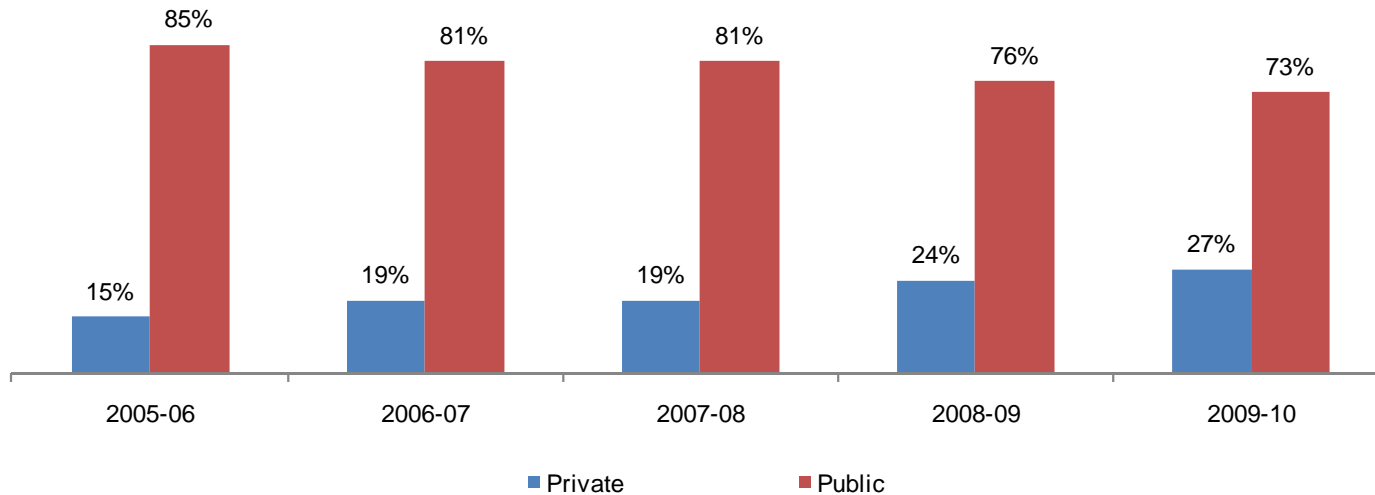


Table 3.23. All Colleges Annual Transfers by Institution Type

	2005-06		2006-07		2007-08		2008-09		2009-10		% Change 05/06-09/10	All Colleges Average 05/06-09/10
Private	271	15%	363	19%	404	19%	542	24%	792	27%	192%	22%
Public	1,566	85%	1,548	81%	1,724	81%	1,688	76%	2,123	73%	36%	78%
<b>Total</b>	<b>1,837</b>	<b>100%</b>	<b>1,911</b>	<b>100%</b>	<b>2,128</b>	<b>100%</b>	<b>2,230</b>	<b>100%</b>	<b>2,915</b>	<b>100%</b>	<b>59%</b>	<b>100%</b>

Source: SDCCD Information System

Note: Public and Private included both Out-of-State and In-State 4-year institutions

**Section IV**  
**Productivity and Efficiency**

## **SDCCD Section IV: Productivity and Efficiency**

---

This section of the Fact Book contains information on productivity and efficiency measures. The following describes in detail each of the measures:

- 1) FTES. The first measure reported in this section is a measure of productivity. FTES is a calculation of full-time equivalent students enrolled as of official census and is based on the total number of student contact hours. Starting in 2009-10 tutoring hours (course number 044) can only be claimed for Basic Skills classes at the credit colleges.
- 2) Enrollments. The second measure in this section of the report is also a measure of productivity. Enrollments are duplicated counts of students. The measure counts all of the classes in which a single student is enrolled compared to unduplicated headcount which counts the student only once regardless of the number of classes he/she may be enrolled in.
- 3) Fill Rates. The third measure reported in this section is a measure of efficiency. Fill rates are a calculation of the total credit college enrollment capacity of a class over the total credit college enrollments in the class.
- 4) Load. The fourth measure reported in this section is a measure of efficiency. Load is a calculation of the ratio of Weekly Student Contact Hours (WSCH) to Full-time Equivalent Faculty (WSCH/FTEF) for credit colleges.

## SDCCD Section IV: Productivity and Efficiency (FTES)

**Annual FTES:** The District showed a 7% increase in credit FTES between 2005/06 and 2009/10. Non-credit FTES showed a steady increase over the same five year period then dipped by nearly 16% between 2008/09 and 2009/10. Overall, FTES increased Districtwide by 4% between 2005/06 and 2009/10.

Figure 4.1. SDCCD Resident & Non Resident Annual FTES

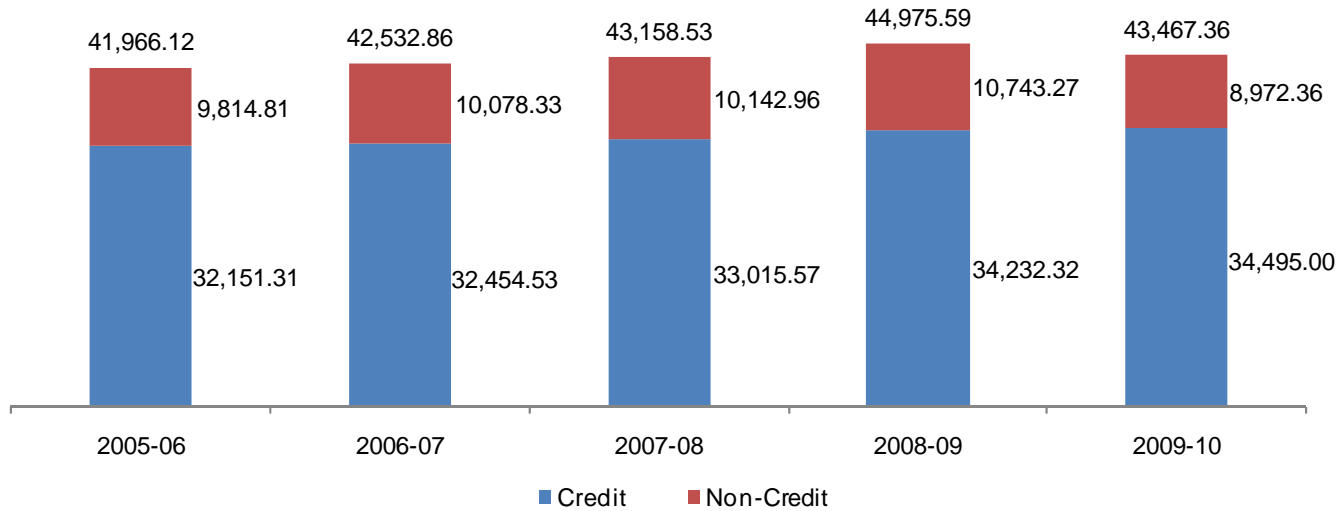


Table 4.1. SDCCD Resident & Non Resident Annual FTES

	2005-06	2006-07	2007-08	2008-09	2009-10
Credit	32,151.31	32,454.53	33,015.57	34,232.32	34,495.00
Non-Credit	9,814.81	10,078.33	10,142.96	10,743.27	8,972.36
<b>Total</b>	<b>41,966.12</b>	<b>42,532.86</b>	<b>43,158.53</b>	<b>44,975.59</b>	<b>43,467.36</b>

Source: SDCCD Information System



## SDCCD Section IV: Productivity and Efficiency (Enrollments)

**Enrollments:** The enrollment trend for the online mode of instruction increased tremendously for summer (179%), fall (127%), and spring (37%) terms between 2005/06 and 2009/10. However, the districtwide enrollment trend for the on campus mode of instruction showed a decline between 2005/06 and 2006/07 and then a steady increase between 2006/07 and 2009/10. Overall, enrollment trends for the District increased for the summer, fall and spring terms (13%, 9%, & 7%, respectively)

Figure 4.2.1. SDCCD Enrollments (Summer)

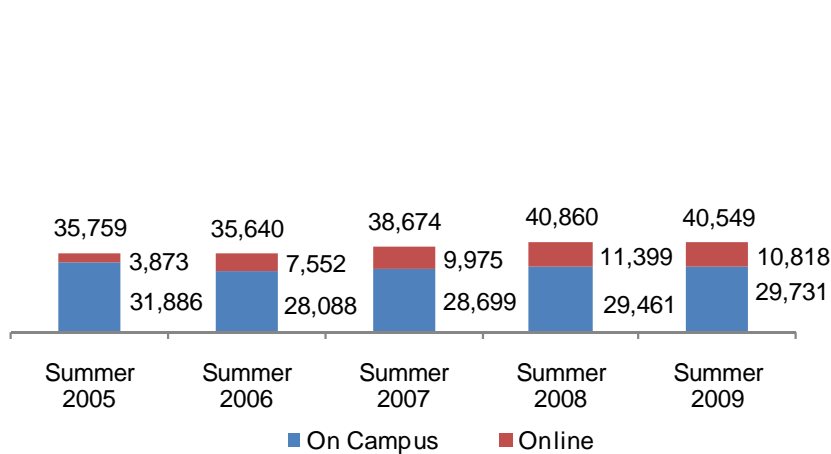


Figure 4.2.2. SDCCD Enrollments (Fall)

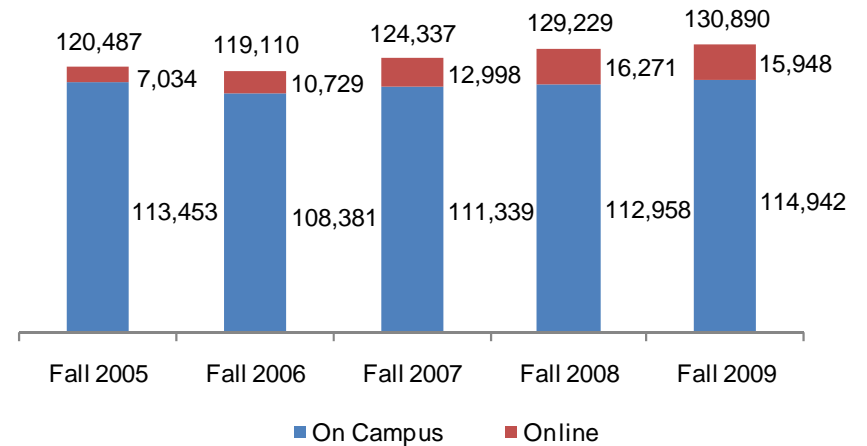
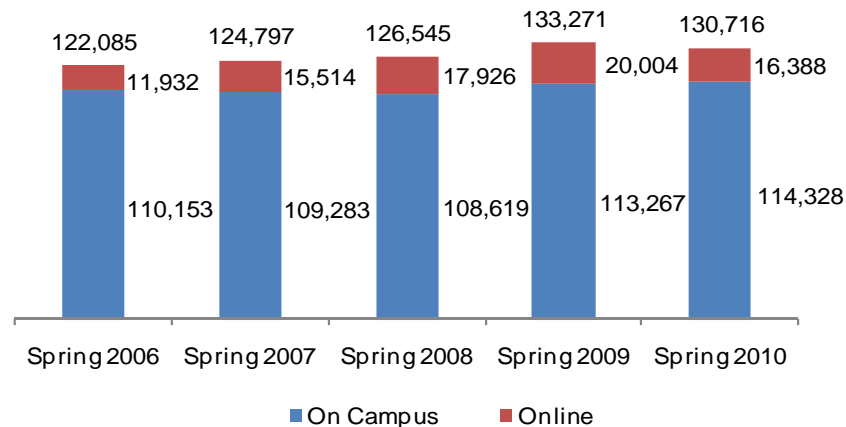


Figure 4.2.3. SDCCD Enrollments (Spring)



## SDCCD Section IV: Productivity and Efficiency (Enrollments)

Table 4.2. SDCCD Enrollments

	On Campus	Online	Total
2005	31,886	3,873	35,759
2006	28,088	7,552	35,640
2007	28,699	9,975	38,674
2008	29,461	11,399	40,860
2009	29,731	10,818	40,549
<b>Total</b>	<b>147,865</b>	<b>43,617</b>	<b>191,482</b>

	On Campus	Online	Total
Fall 2005	113,453	7,034	120,487
Fall 2006	108,381	10,729	119,110
Fall 2007	111,339	12,998	124,337
Fall 2008	112,958	16,271	129,229
Fall 2009	114,942	15,948	130,890
<b>Total</b>	<b>561,073</b>	<b>62,980</b>	<b>624,053</b>

	On Campus	Online	Total
Spring 2006	110,153	11,932	122,085
Spring 2007	109,283	15,514	124,797
Spring 2008	108,619	17,926	126,545
Spring 2009	113,267	20,004	133,271
Spring 2010	114,328	16,388	130,716
<b>Total</b>	<b>555,650</b>	<b>81,764</b>	<b>637,414</b>

Source: SDCCD Information System

Note: Includes all enrolled students as of official census day.

## SDCCD Section IV: Productivity and Efficiency (Fill Rates)

**Fill Rates:** The overall fill rates for all colleges in the district were the highest in the fall term, on average, when compared to spring and summer terms (83% vs. 82% & 73%, respectively) between 2005/06 and 2009/10. On average, fill rates for the on campus mode of instruction across summer, fall, and spring terms (72%, 83%, & 82%) were similar when compared to the online mode of instruction (summer 78%, fall 82%, & spring 82% terms).

Figure 4.3.1. All Colleges Fill Rates (Summer)

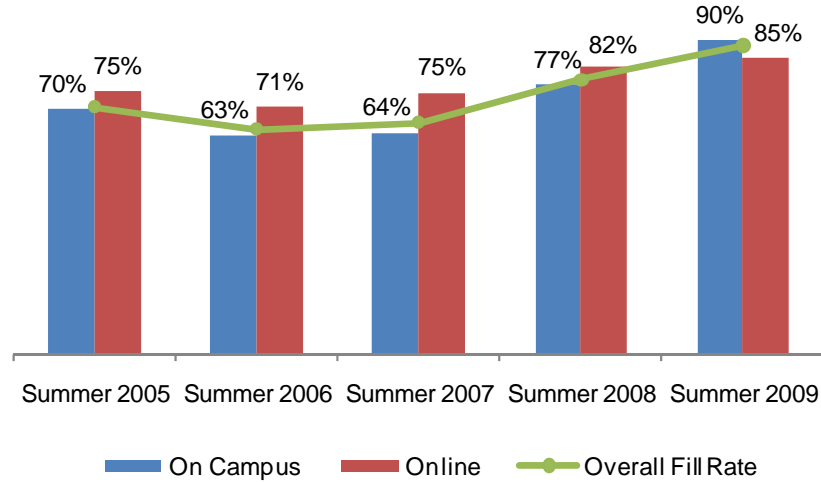


Figure 4.3.2. All Colleges Fill Rates (Fall)

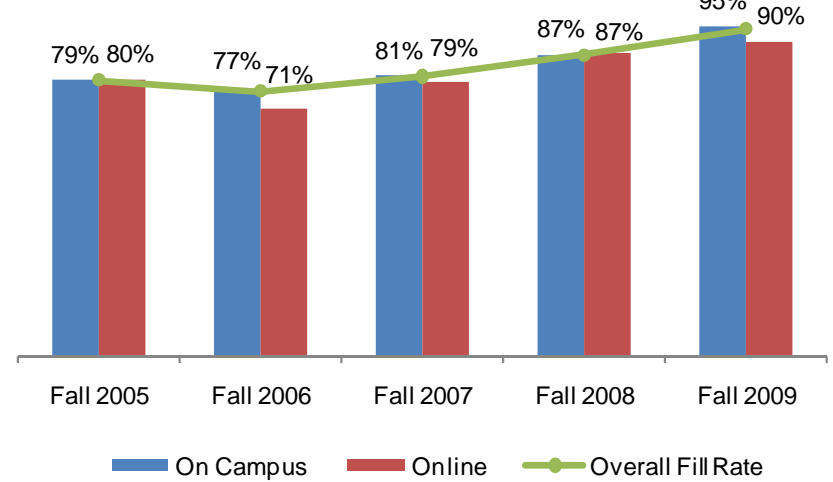
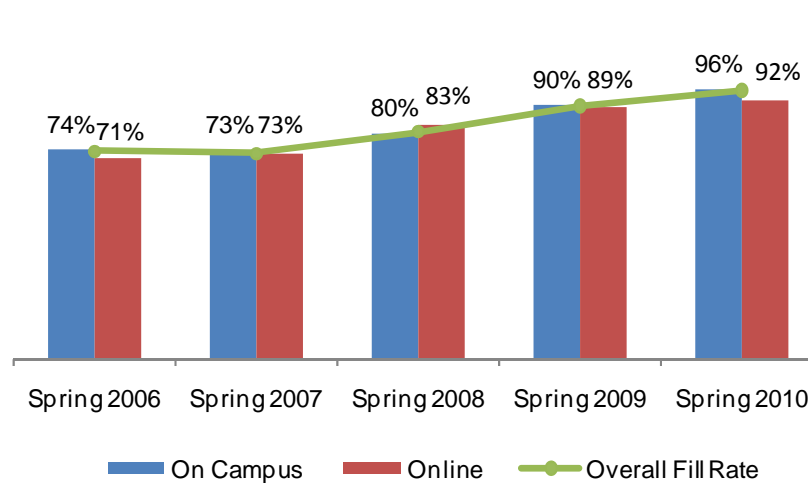


Figure 4.3.3. All Colleges Fill Rates (Spring)



## SDCCD Section IV: Productivity and Efficiency (Enrollments and Fill Rates)

Table 4.3. All Colleges Enrollments and Fill Rates

	On Campus			Online			All Colleges Total		
	Enrollment	Capacity	Fill Rate	Enrollment	Capacity	Fill Rate	Enrollment	Capacity	Fill Rate
Summer 2005	25,840	36,737	70%	3,851	5,107	75%	29,691	41,844	71%
Summer 2006	24,305	38,780	63%	7,552	10,662	71%	31,857	49,442	64%
Summer 2007	24,871	39,123	64%	9,968	13,287	75%	34,839	52,410	66%
Summer 2008	25,976	33,642	77%	11,083	13,486	82%	37,059	47,128	79%
Summer 2009	26,497	29,396	90%	10,627	12,507	85%	37,124	41,903	89%
<b>Total</b>	<b>127,489</b>	<b>177,678</b>	<b>72%</b>	<b>43,081</b>	<b>55,049</b>	<b>78%</b>	<b>170,570</b>	<b>232,727</b>	<b>73%</b>

	On Campus			Online			All Colleges Total		
	Enrollment	Capacity	Fill Rate	Enrollment	Capacity	Fill Rate	Enrollment	Capacity	Fill Rate
Fall 2005	96,488	121,696	79%	7,032	8,839	80%	103,520	130,535	79%
Fall 2006	95,876	124,879	77%	10,724	15,105	71%	106,600	139,984	76%
Fall 2007	97,645	121,155	81%	12,867	16,315	79%	110,512	137,470	80%
Fall 2008	97,852	112,887	87%	15,126	17,422	87%	112,978	130,309	87%
Fall 2009	95,767	101,031	95%	15,558	17,195	90%	111,325	118,226	94%
<b>Total</b>	<b>483,628</b>	<b>581,648</b>	<b>83%</b>	<b>61,307</b>	<b>74,876</b>	<b>82%</b>	<b>544,935</b>	<b>656,524</b>	<b>83%</b>

	On Campus			Online			All Colleges Total		
	Enrollment	Capacity	Fill Rate	Enrollment	Capacity	Fill Rate	Enrollment	Capacity	Fill Rate
Spring 2006	96,225	130,033	74%	11,930	16,718	71%	108,155	146,751	74%
Spring 2007	95,716	131,536	73%	15,510	21,332	73%	111,226	152,868	73%
Spring 2008	94,527	118,099	80%	17,909	21,561	83%	112,436	139,660	81%
Spring 2009	97,588	108,550	90%	19,110	21,511	89%	116,698	130,061	90%
Spring 2010	97,528	101,971	96%	16,079	17,520	92%	113,607	119,491	95%
<b>Total</b>	<b>481,584</b>	<b>590,189</b>	<b>82%</b>	<b>80,538</b>	<b>98,642</b>	<b>82%</b>	<b>562,122</b>	<b>688,831</b>	<b>82%</b>

Source: SDCCD Information System

Note: Fill rates are enrollments over the enrollment cap and do not include Positive Attendance, Non-credit, Apprenticeship, In-services, or cancelled courses.

## SDCCD Section IV: Productivity and Efficiency (Load)

**Load:** The Load values increased between Fall 2005 and Fall 2009 (500 to 571). Similarly, in the Spring terms the Load values showed an increase between Spring 2006 and Spring 2010 (480 to 583). The statewide benchmark for Load is 525 for a 17.5 week semester. SDCCD has set an internal benchmark of 557, which is commensurate to its 16.5 week semester.

Figure 4.4.1. All Colleges Fall Load



Figure 4.4.2. All Colleges Spring Load

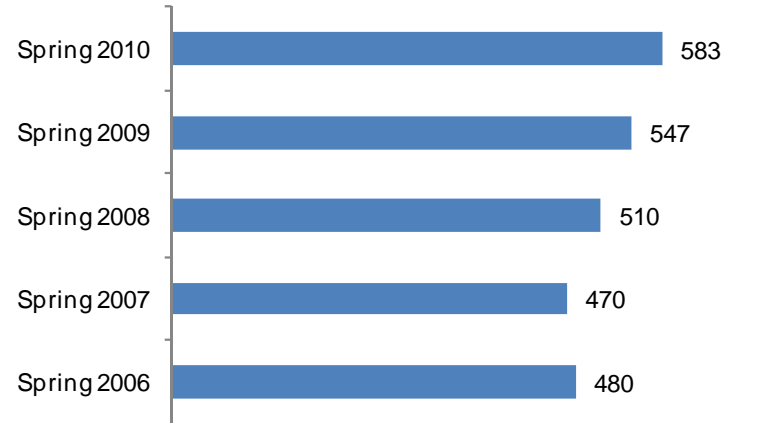


Table 4.4. All Colleges Load

	Load
Fall 2005	500
Fall 2006	493
Fall 2007	503
Fall 2008	534
Fall 2009	571
Spring 2006	480
Spring 2007	470
Spring 2008	510
Spring 2009	547
Spring 2010	583

Source: SDCCD Information System

**Section V**  
**Human Resources**

## **SDCCD Section V: Human Resources**

---

This section of the Fact Book contains information on the number and classification of employees during the Fall 2009 semester. The information is reported as follows:

- 1) Gender
- 2) Ethnicity
- 3) Employee Classification

## SDCCD Section V: Human Resources

**Fall 2009 Employees by Ethnicity:** There were a total of 4,429 employees working within the District during Fall 2009. The ethnic breakdown showed that White employees comprised 53% of the total employee population, followed by Latino employees (15%) and Asian employees constituted 11% of the districtwide workforce. Among classified staff, White employees comprised 35% of the employees and made up two-thirds of the teaching faculty positions (67%) compared to all other ethnic groups. White employees constituted approximately half (52%) of management positions and supervisory positions (48%). African American employees comprised nearly one-tenth (8%) of the management positions and 14% of the supervisory positions. Latino employees constituted approximately one-tenth (11%) of the supervisory positions and 9% of the management positions.

Both Filipino and Latino districtwide employee populations (1% & 15%, respectively) were underrepresented relative to the Filipino and Latino districtwide general student populations (4% & 29%, respectively). However, the districtwide White employee population (53%) was overrepresented relative to the districtwide White general student population (35%). The districtwide employee populations of all other ethnic groups were for the most part comparable to the districtwide general student populations of all other ethnic groups.

Figure 5.1.1. SDCCD Fall 2009 Employees by Ethnicity

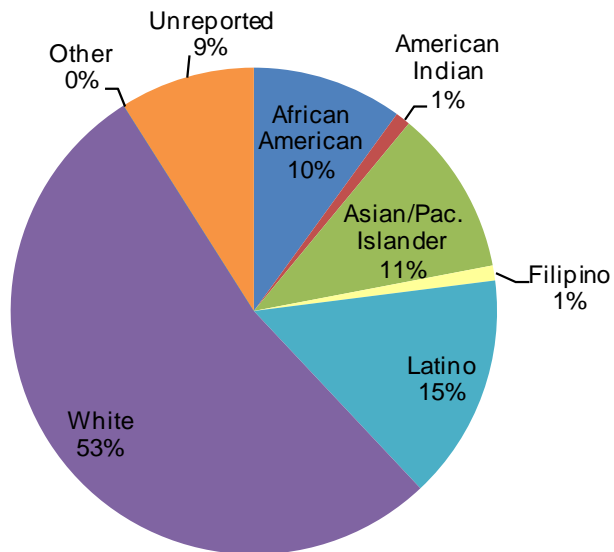
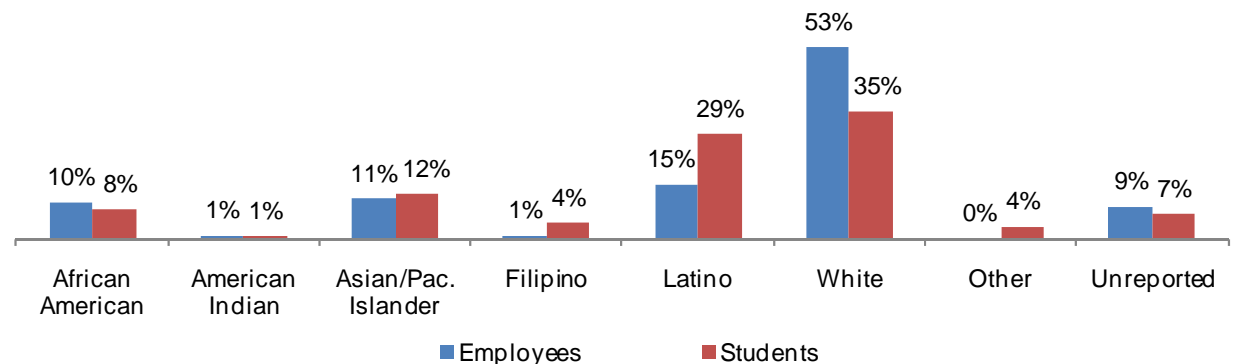


Figure 5.1.2. SDCCD Fall 2009 Employees compared to Students by Ethnicity





## SDCCD Section V: Human Resources

Table 5.1. SDCCD Fall 2009 Employees by Ethnicity

	African American		American Indian		Asian/Pacific Islander		Filipino		Latino		White		Other		Unreported		Total
Total Employees	437	10%	23	1%	488	11%	52	1%	673	15%	2,336	53%	14	0%	406	9%	4,429
Female	235	10%	12	1%	261	11%	26	1%	399	17%	1,239	52%	8	0%	222	9%	2,402
Male	202	10%	11	1%	227	11%	26	1%	274	14%	1,097	54%	6	0%	184	9%	2,027
Classified Staff	114	14%	4	0%	122	15%	32	4%	182	22%	284	35%	6	1%	74	9%	818
Non-Academic Hourly	110	14%	6	1%	169	21%	1	0%	173	22%	273	34%	2	0%	70	9%	804
Teaching Faculty	110	5%	9	0%	143	7%	3	0%	231	11%	1,385	67%	3	0%	184	9%	2,068
Contract	38	7%	3	1%	34	7%	2	0%	61	12%	315	60%	1	0%	67	13%	521
Adjunct	72	5%	6	0%	109	7%	1	0%	170	11%	1,070	69%	2	0%	117	8%	1,547
Counseling Faculty	17	14%	2	2%	9	7%	3	2%	33	27%	45	37%	1	1%	12	10%	122
Contract	14	15%	1	1%	6	7%	2	2%	24	26%	35	38%	1	1%	8	9%	91
Adjunct	3	10%	1	3%	3	10%	1	3%	9	29%	10	32%	-	-	4	13%	31
Library Faculty	-	-	-	-	2	7%	-	-	1	4%	19	68%	-	-	6	21%	28
Contract	-	-	-	-	1	7%	-	-	1	7%	9	64%	-	-	3	21%	14
Adjunct	-	-	-	-	1	7%	-	-	-	-	10	71%	-	-	3	21%	14
Police Officers	4	15%	-	-	3	11%	1	4%	2	7%	15	56%	-	-	2	7%	27
Community Service Officers	3	19%	-	-	1	6%	1	6%	4	25%	6	38%	-	-	1	6%	16
Management	8	8%	-	-	7	7%	-	-	9	9%	49	52%	-	-	22	23%	95
Supervisory Staff	23	14%	-	-	16	10%	6	4%	18	11%	78	48%	-	-	20	12%	161

Source: SDCCD Information System

Table 5.2. SDCCD Employees by Gender and Employment Status

Gender		Employment Status	
Female	54%	Full-Time/Contract	44%
Male	46%	Hourly/Adjunct	56%

Source: SDCCD Information System

**Section VI**  
**Concluding Remarks**

## **SDCCD Section VI: Concluding Remarks**

---

*Headcount.* The number of unduplicated students or headcount districtwide showed fluctuations during the five year reporting period; 2005 to 2009. The summer headcount showed 5% increase between 2005 and 2009, while the fall and spring headcounts showed either no increase or a decrease (0% & -2%, respectively). Between 2005 and 2008 there were steady increases in headcount each semester then in 2009/10 the headcount began to decrease. The decreases are likely due to the reduction in sections at each of the campuses.

*Demographics.* The student population remained majority female (55% on average), diverse (28% Latino, 12% Asian/Pacific Islander & 35% White on average) and generally young (51% on average were between 18-29 years old). The fastest growing segment appeared to be students who were under 18 year old age group followed by the 25-29 years and older age group. The increase of the under 18 year old age group may be due to the increase of college classes offered at the high schools, while the increase in the 25-29 years and older age group may be due to students returning to college to retool or retrain as a result of the economic downturn. Approximately one-third of the student population districtwide lived outside of the San Diego Community College District service area. This remained consistent over the five year reporting period.

*Units Attempted by Units Earned.* Students who enrolled in fewer units were more likely to complete the entire number of units attempted. On average, approximately three-quarters of those students who attempted between 3.0-5.9 units completed the attempted units, while approximately half of the students completed all of the 6.0-8.9 units attempted. Furthermore, less than half of those students who attempted greater than 8.9 units actually completed all of the attempted units.

*Persistence.* More than half of the first-time credit college students who completed a fall term persisted and completed the subsequent spring term (67% on average) during the five years reported; 2005 to 2009. Female students persisted at a higher rate, on average, than their male student counterpart (70% compared to 65%), while the average persistence rates by ethnicity ranged from 57% to 75% with Asian/Pacific Islanders consistently having the highest persistence rates (70%-81%) and American Indians the lowest (42%-71%). A general trend showed that as age increased, term persistence decreased. In particular, younger first-time college credit students persisted at a higher rate than older students (70% for 18-24 year olds compared to 47% for 40-49 year olds), which is likely due to the fact that the younger students were generally degree or transfer seeking with a longer range education plan than the older students.

*Student Outcomes: Success, Retention, and GPA.* The average successful course completion rate for the credit college students between 2005 and 2009 was 67%, the average retention rate was 83%, and the average GPA was 2.67. Male and female students were fairly comparable on success and retention rates. However, female students had higher GPA, on average, than their male student counterparts (2.71 compared to 2.62). Student ages 18-24 years old, on average, had the high retention rates but the lowest success rates and GPA (83%, 64%, & 2.48 respectively). Since this segment makes up approximately half of the student population, further investigation into this disparity seems warranted so that clarification as to why this segment of the population underperforms in comparison to other age groups. Overall, White students had one of the highest success rate and GPA, while African American students had the lowest.

## **SDCCD Section VI: Concluding Remarks**

---

*Student Outcomes: Awards Conferred.* On average, 46% of the total awards conferred districtwide were associate degrees. Of the total awards conferred districtwide, female students (57%) received more associate degrees, on average, than their male student counterpart (43%) between 2005/06 and 2009/10. From 2005/06 to 2009/10, of the total awards conferred districtwide, male students (54%) received more Continuing Education certificates of completion, on average, than their female student counterpart (46%). The number of associate degrees conferred within all colleges in the district decreased for all ethnic groups except for American Indian and Latino students, which increased 11% and 1%, respectively, between 2005/06 and 2009/10. With the exception of Filipino students, the number of certificates of completion conferred at Continuing Education increased for all ethnic groups between 2005/06 and 2009/10. These trends reflect the fact that these three ethnicities (White, Latino, and Asian/Pacific Islanders students) constitute the greatest proportions of the districtwide student headcount population. Between 2005/06 and 2009/10, students between ages 18 and 24 years old received the highest number of associate degrees (39%) on average, with the 25-29 year old group following. Continuing Education, on average, students between 30-39 and 40-49 years old consistently displayed a trend of receiving the highest number of certificates.

*Student Outcomes: Transfer Volume.* The annual transfer volume for all colleges in the district increased 59%, from 1,837 in 2005/06 to 2,915 in 2009/10. On average, nearly half of the transfers were to the CSU system (47%) followed by UC (21%), Out-of-State institutions (19%), and finally In-State private institutions (13%), which is the fastest growing in terms of transfer of the four segments (212% change between 2005/06 and 2009/10). The Latino student population more than doubled the number of transfers in the five year period (223 to 483) and the African American student population doubled (80 to 162). This may be a result of the Learning Communities and other transfer related programs and services at the colleges.

*Productivity and Efficiency.* Duplicated headcounts/enrollments at the credit colleges increased 9% between 2005 to 2009. Similarly, FTES increased 4% during this same reporting period. Both showed fluctuations each year with a particular surge in enrollment and FTES between 2008/09 and 2009/10. Fill rates also showed marked increases during this period (94% in Fall 2009) and Load (WSCH/FTEF) was at an all time high in both Fall 2009 and Spring 2010 (571 & 583, respectively).

*Human Resources.* There were a total of 4,429 employees working within the District during Fall 2009. Both the Filipino and Latino employee populations districtwide (1% & 15%, respectively) were underrepresented relative to the Filipino and Latino student populations (4% & 29%, respectively). In contrast, the White employee population districtwide (53%) was overrepresented relative to the districtwide White student population (35%) by approximately one and one half times.