

Project Overview

Current Status /Phase	Programming
Construction Type	New Construction / Modernization
Gross Square Footage	TBD GSF
Division of State Architect	Yes
Construction Method	Design-Bid-Build
Contract Start Date	TBD
Contract Expiration Date	TBD

Project Financials

Funded By	Measure HH
-----------	------------

Project Teams

Design-Build Entity	TBD
Architect	Delawie
Structural Engineer	TBD
Civil Engineer	TBD
Mech./Elect. Engineer	Randall Lamb
Executive Const. Manager	Ben Baker
SDCCD Program Manager	Gafcon
DSA Inspector	TBD

Site Detail

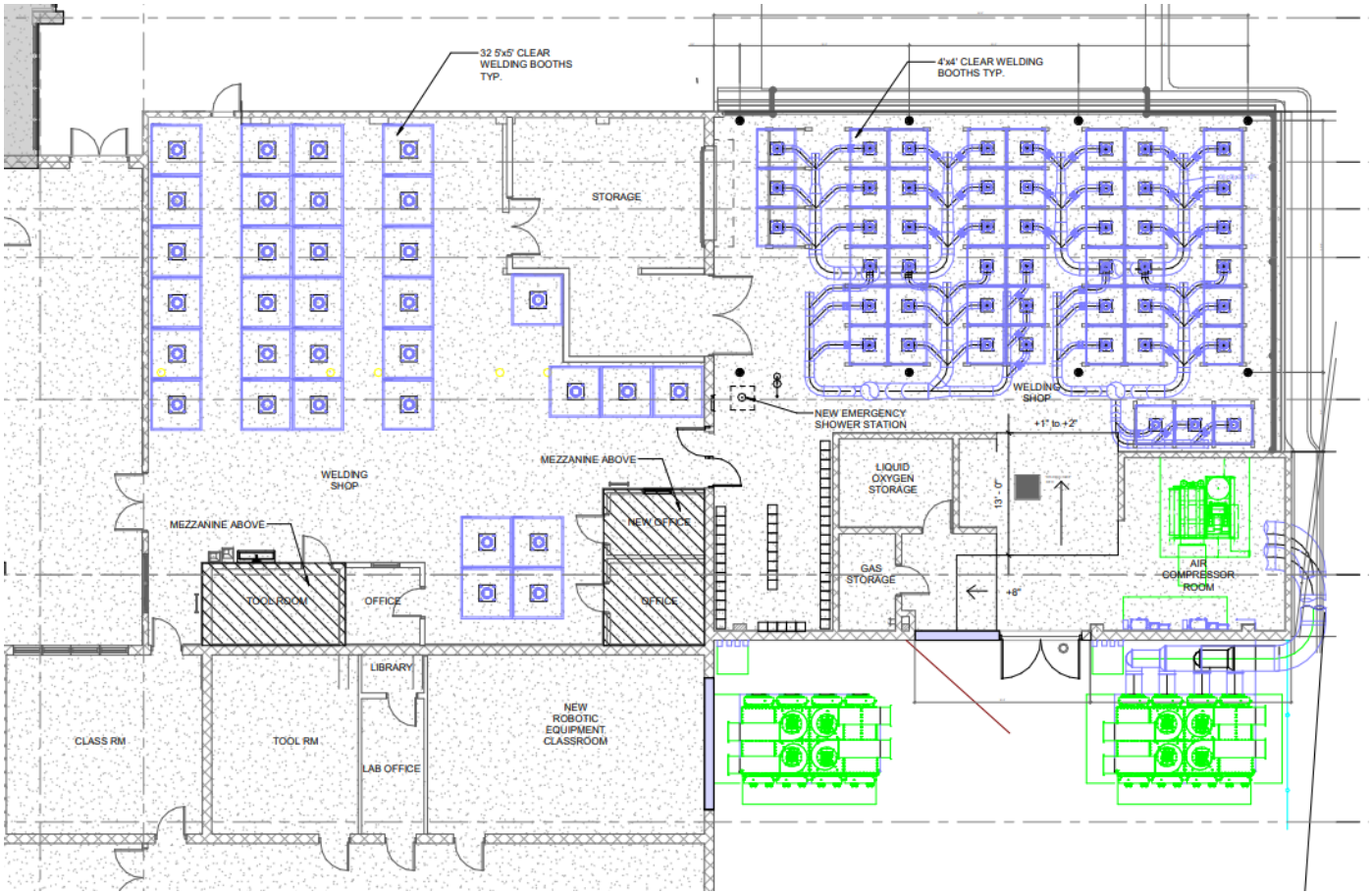
Campus	CCE Educational Cultural Center
Coordinates	32° 41' 57.51" N , 117° 6' 0.87" W

Project Schedule

Programming & Planning	Design and DSA Approval	Construction Completion Est.)	FFE and Move-In (Est.)
July 2025	Design: Dec 2025 DSA: Sept 2026	July 2027	Sept 2027

Project Insight

- Initial site assessments are underway with the Architect and engineering team.
- The AE team reviewed available as-built documents and evaluated the existing systems and program area to verify current conditions, assess capacity and determine feasibility for improvements.
- Roof Assessment completed by Garland to verify conditions of the single ply and Build-Up Roof sections over the project limits.
- Preliminary Feasibility Study Report submitted to DA / OESF for review and approval. Findings from these as-



Project Features

The San Diego College of Continuing Education Educational Cultural Complex Building Trades Training Center Project will include renovation of existing spaces including welding booth areas with modern equipment, a new extraction system for air quality, new roofing, a classroom, offices, outdoor yard area, and storage areas. The design feasibility assessment will assist in better defining the project.

Project Site Plan

