

Project Overview

Current Status /Phase	Construction
Construction Type	Equipment Replacement
Gross Square Footage	N/A
Division of State Architect	N/A
Construction Method	Traditional Design-Bid-Build
Contract Start Date	07/14/2025
Contract Expiration Date	01/09/2026

Project Financials

Construction budget only shown

Funded By	HH Bond
Programmed Budget	\$1,830,513
Current Budget	\$1,830,513
Expenditures to Date	\$0.00

Project Teams

Architect	Lance Lareau
Structural Engineer	N/A
Electrical Engineer	N/A
Civil Engineer	Nasland Engineering
Mechanical Engineer	N/A
SDCCD Project Manager	Leon Cavallo
Construction Manager	Steve Evanco
Inspector	Phil San Filippo
Contractor	Align Builders

Site Detail

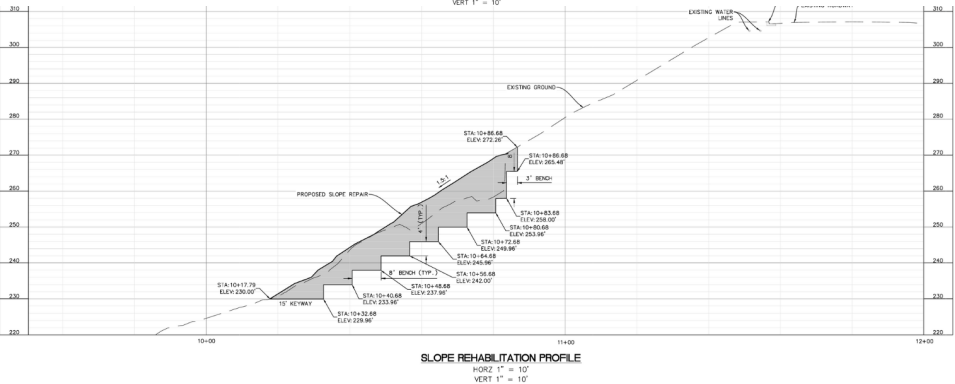
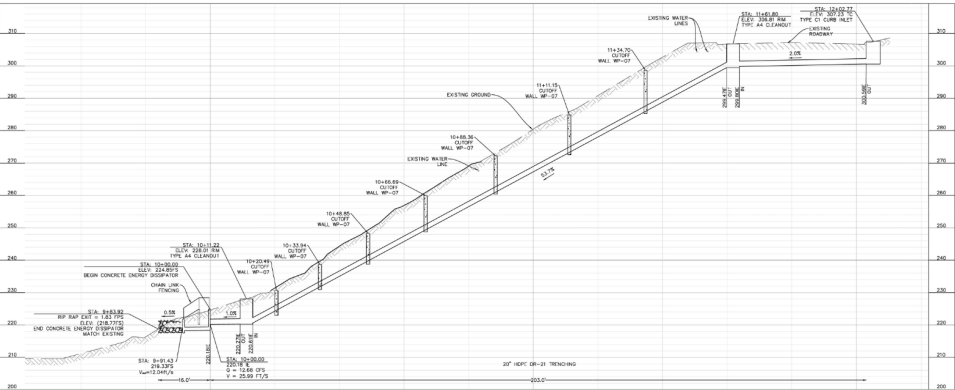
Campus	Mesa College
Coordinates	32° 48' 14.53" N, 117° 10' 26.25" W

Project Schedule

Programming & Planning	Design & DSA Approval	Construction Finish	FFE & Move-In Finish
05/02/2025	8/21/2024	01/10/2026	N/A

Project Insight

- 8-22-2025: 7 day concrete cure ongoing after cut off wall pour on Friday 8/22.
- 8-29-2025: Group Delta 7 day cylinder break.
- 8-25-2025 to 8-28-2025: No work on street at Mesa College Cir for start of school.
- 8-25-2025: Excavation of the energy dissipator and formwork will commence on 8/25.
- 8-28-2025: Concrete base pour for energy dissipator (milestone).
- 8-29-2025: Start the C1 curb inlet base form work.
- 9-02-2025: Start backfill for storm drain system on slope.
- 9-03-2025: C1 Inlet Base concrete pour.
- 9-05-2025: Start form work for top of energy dissipater.
- 9-19-2025: Energy dissipator concrete pour

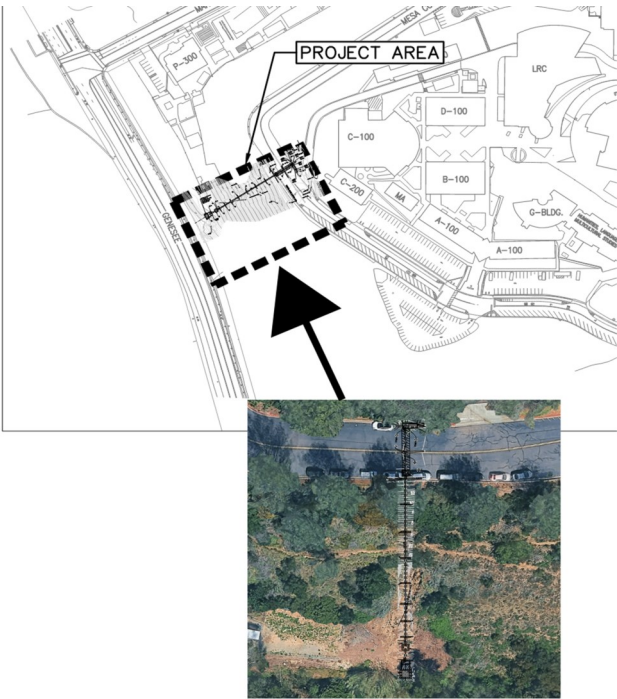


Projects Features

This project focuses on enhancing the existing storm drain system located at the West End of the Mesa College campus. The current 18-inch corrugated steel pipe (CSP) system will be removed and replaced with an improved and efficient 20-inch high-density poly-ethylene (HDPE) pipe. The new storm drain system offers increased flow capacity and improved long-term performance.

In addition to the storm drain upgrade, this project includes the rehabilitation of slopes in the surrounding area in accordance with Geotechnical report. These areas will be reconstructed using na-

Project Site Plan



Look Ahead

All team and crew members must complete a site orientation prior to starting work if it is their first time on-site. Daily sign-in is re-quired, along with a completed Weekly Pre-Task Plan that must be reviewed and approved by the site superintendent. A mandatory Weekly Safety Meeting will be held every Monday at 7:00 AM, and all personnel working on-site are required to attend. Background checks must be submitted and approved before arriving on-site. A Traffic Control Plan has been established. No work will take place on Mesa College Circle from August 25 to August 28, with the main focus during this period being work on the slope.