

Mesa College Fact Book 2009



Prepared by:
Office of Institutional Research and Planning
September 2009

Mesa College Fact Book 2009: Table of Contents

Overview.....1

Section I: Headcount and Student Characteristics.....2

- Section Overview.....3
- Overall.....4
- Gender.....5
- Ethnicity.....6
- Age.....7
- Enrollment Status.....8
- Educational Objective.....9
- Primary Language.....11
- Prior Education Level.....12
- Service Area of Residence.....13
- Units Attempted by Units Earned14
- First Generation.....16
- Income Level.....17
- DSPS.....18
- EOPS.....19

Section II. Fall to Spring Term Persistence Rates.....20

- Section Overview.....21
- Overall.....22
- By Gender.....23
- By Ethnicity.....24
- By Age.....26

Section III. Student Outcomes.....28

- Section Overview.....29
- Annual Success Rates
 - Overall.....30
 - By Gender.....31

○ By Ethnicity.....32

○ By Age.....33

• Annual Retention Rates

○ Overall.....34

○ By Gender.....35

○ By Ethnicity.....36

○ By Age.....37

• Annual GPA

○ Overall.....38

○ By Gender.....39

○ By Ethnicity40

○ By Age.....41

• Annual Awards Conferred

○ Overall.....42

○ By Gender.....43

○ By Ethnicity.....46

○ By Age.....50

• Annual Transfer

○ Overall.....54

○ By Gender.....55

○ By Ethnicity.....56

○ By Age.....57

○ CSU-UC/Private/Out-of-State.....58

○ UC/CSU.....59

○ Institution Type (Private vs. Public).....60

Section IV. Productivity and Efficiency.....61

• Section Overview.....62

• Annual FTES.....63

• Enrollments: Online and On Campus.....64

• Fill Rates.....65

• Load.....67

Mesa College Fact Book 2009: Table of Contents

Section V. Human Resources.....68

- Section Overview.....69
- Fall 2008 Employees by Gender and Ethnicity.....70

Section VI. Concluding Remarks.....72

Mesa College Fact Book 2009: Overview

This Fact Book is a publication of the Office of Institutional Research and Planning for the San Diego Community College District. It is designed to serve the information needs of the college community with a primary focus on student enrollment, demographics, and outcomes.

The Fact Book is a rich source of collegewide trend information that may be used for planning and decision making. The book contains the following five sections:

- 1) **Headcount and Student Characteristics.** Provides information on student demographic characteristics (e.g., age, ethnicity, and educational objective) over five years.
- 2) **Term Persistence Rates.** Provides information about first-time to college students who complete a fall term and enroll in the subsequent spring term. The information is also reported by demographic characteristics of interest.
- 3) **Student Outcomes.** Provides information on students' successful course completion rates, retention rates, GPA, awards conferred, and transfer volume. All of the information is provided in summary form, as well as by demographic characteristics of interest.
- 4) **Productivity and Efficiency.** Provides information on annual FTES, enrollment and fill rates, and Load (WSCH/FTEF).
- 5) **Human Resources.** Provides information on the number of employees by ethnicity, gender, and employee classification.

Each section contains the following benchmarks: 1) The percentage change over the five year period being reported, 2) The collegewide average and 3) The "All Colleges" in the district averages (excludes Continuing Education).

Section I
Headcount and Student Characteristics

Mesa College Section I: Headcount and Student Characteristics

This section of the Fact Book contains student headcount by various student characteristics. The headcount figures are single student counts (unduplicated headcount) based on official census counts at the end of the semester (all students who dropped or never attended prior to the class census date were not included). The headcount information is reported over a period of five years to analyze trends and establish benchmarks.

Headcount information is reported by the following segments:

- 1) Overall
- 2) Gender
- 3) Ethnicity
- 4) Age
- 5) Educational Objective
- 6) Enrollment Status
- 7) Primary Language
- 8) Prior Education Level
- 9) Service Area of Residence
- 10) Units Attempted by Units Earned
- 11) First Generation
- 12) Income Level
- 13) DSPS
- 14) EOPS

Mesa College Section I: Headcount and Student Characteristics

Overall Headcount: The unduplicated student headcount for Mesa College showed a 1% increase between Fall 2004 and Fall 2008. In particular, there was a decline in the Mesa student headcount population in Fall 2005 and then a subsequent increase between Fall 2006 and Fall 2008. The unduplicated student headcount for Mesa College showed a 1% decline between Summer 2004 and Summer 2008. Finally, the unduplicated student headcount for Mesa College showed a 4% increase between Spring 2005 and Spring 2009.

Figure 1.1. Mesa College Overall Headcount (Fall)

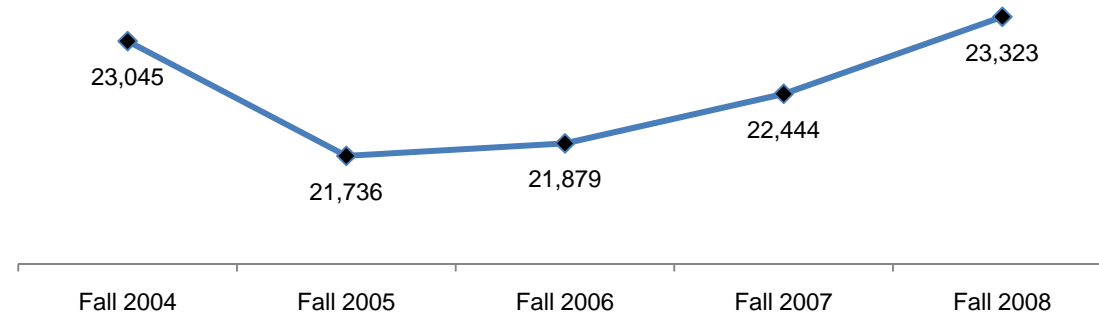


Table 1.1.1. Mesa College Overall Headcount (Fall)

	Fall 2004	Fall 2005	Fall 2006	Fall 2007	Fall 2008	% Change Fall 04-08
Total	23,045	21,736	21,879	22,444	23,323	1%

Source: SDCCD Information System

Table 1.1.2. Mesa College Overall Headcount (Summer)

	Summer 2004	Summer 2005	Summer 2006	Summer 2007	Summer 2008	% Change Summer 04-08
Total	12,184	11,135	10,478	10,875	12,003	-1%

Source: SDCCD Information System

Table 1.1.3. Mesa College Overall Headcount (Spring)

	Spring 2005	Spring 2006	Spring 2007	Spring 2008	Spring 2009	% Change Spring 05-09
Total	22,963	22,055	22,146	22,756	23,967	4%

Source: SDCCD Information System

Mesa College Section I: Headcount and Student Characteristics

Headcount by Gender: On average, the female student headcount (54%) was higher than their male student counterpart (46%), which remained consistent for the most part between Fall 2004 and Fall 2008. Both male and female student headcounts increased between Fall 2004 and Fall 2008, which paralleled the overall student population trend. Both male and female student headcounts showed a decline in Fall 2005 and then subsequently increased between Fall 2006 and Fall 2008.

Figure 1.2. Mesa College Headcount by Gender

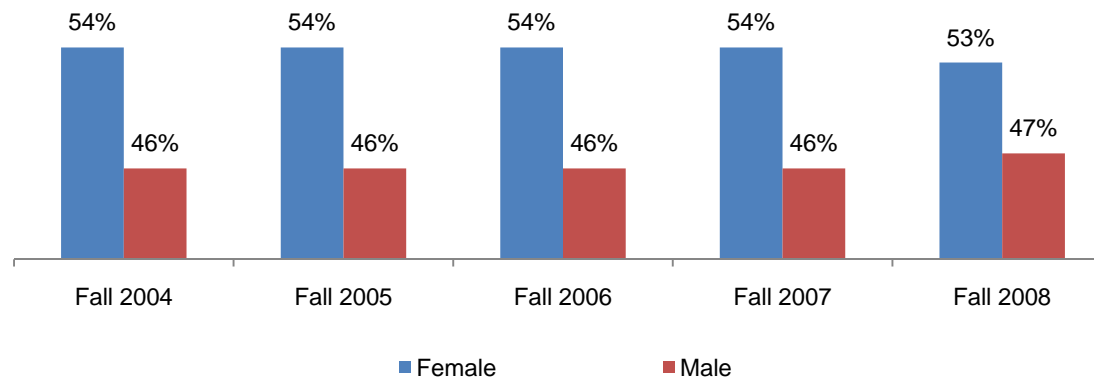


Table 1.2. Mesa College Headcount by Gender

	Fall 2004		Fall 2005		Fall 2006		Fall 2007		Fall 2008		% Change Fall 04-08	College Average Fall 04-08	All Colleges Average Fall 04-08
Female	12,333	54%	11,676	54%	11,709	54%	12,046	54%	12,449	53%	1%	54%	52%
Male	10,664	46%	9,997	46%	10,124	46%	10,376	46%	10,864	47%	2%	46%	48%
Unreported	48	0%	63	0%	46	0%	22	0%	10	0%	-79%	0%	0%
Total	23,045	100%	21,736	100%	21,879	100%	22,444	100%	23,323	100%	1%	100%	100%

Source: SDCCD Information System

Mesa College Section I: Headcount and Student Characteristics

Headcount by Ethnicity: The ethnic groups that constituted the largest headcounts between Fall 2004 and Fall 2008 were White students (41%), Latino students (18%), and Asian/Pacific Islander students (16%) on average. At Mesa College, the Latino student population increased 21% in contrast to Filipino students and students who were categorized as 'Other' ethnicities, which declined 19% each between Fall 2004 and Fall 2008. The Latino student headcount at Mesa College (18%) was underrepresented compared to the Latino student population headcount (22%) of all colleges in the district.

Figure 1.3. Mesa College Headcount by Ethnicity

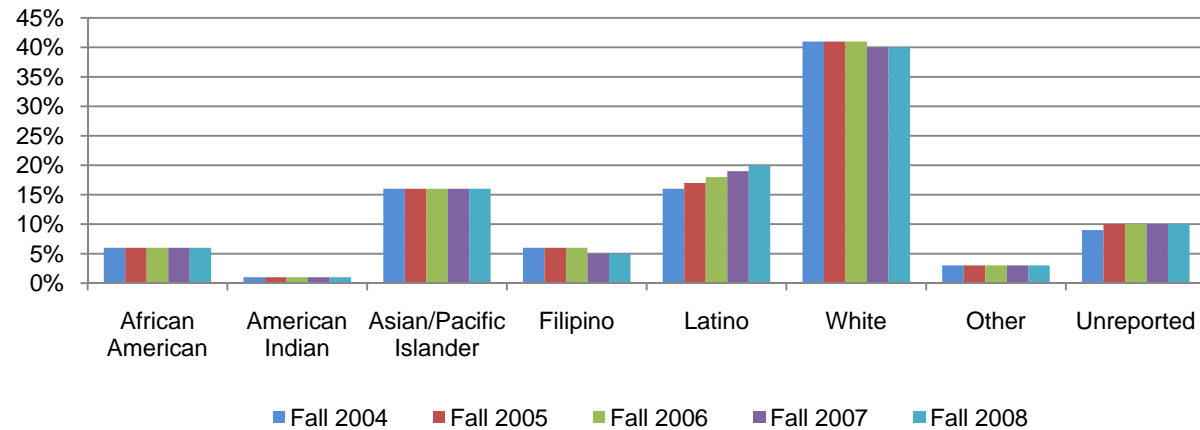


Table 1.3. Mesa College Headcount by Ethnicity

	Fall 2004		Fall 2005		Fall 2006		Fall 2007		Fall 2008		% Change Fall 04-08	College Average Fall 04-08	All Colleges Average Fall 04-08
African American	1,431	6%	1,370	6%	1,387	6%	1,362	6%	1,436	6%	0%	6%	8%
American Indian	217	1%	192	1%	181	1%	204	1%	208	1%	-4%	1%	1%
Asian/Pacific Islander	3,678	16%	3,526	16%	3,560	16%	3,583	16%	3,623	16%	-1%	16%	13%
Filipino	1,456	6%	1,312	6%	1,231	6%	1,191	5%	1,183	5%	-19%	6%	6%
Latino	3,785	16%	3,758	17%	3,907	18%	4,244	19%	4,575	20%	21%	18%	22%
White	9,522	41%	8,884	41%	8,913	41%	9,054	40%	9,318	40%	-2%	41%	38%
Other	778	3%	625	3%	619	3%	653	3%	627	3%	-19%	3%	3%
Unreported	2,178	9%	2,069	10%	2,081	10%	2,153	10%	2,353	10%	8%	10%	9%
Total	23,045	100%	21,736	100%	21,879	100%	22,444	100%	23,323	100%	1%	100%	100%

Source: SDCCD Information System

Mesa College Section I: Headcount and Student Characteristics

Headcount by Age: Students who were between ages 18-24, on average, constituted more than half of the Mesa student population (58%). Of the total Mesa student population, students under age 18 increased 57%, from 767 in Fall 2004 to 1,205 in Fall 2008. With the exception of students under 18 years old, all other age groups exhibited a downward trend in student headcount in Fall 2005 and then subsequently increased between Fall 2006 and Fall 2008. Student headcount for those who were between ages 30 and 39 years old and ages 40-49 years old displayed the greatest disparity at Mesa College (12% and 5%, respectively) when compared to the same age groups for all colleges in the district (15% and 8%, respectively).

Figure 1.4. Mesa College Headcount by Age

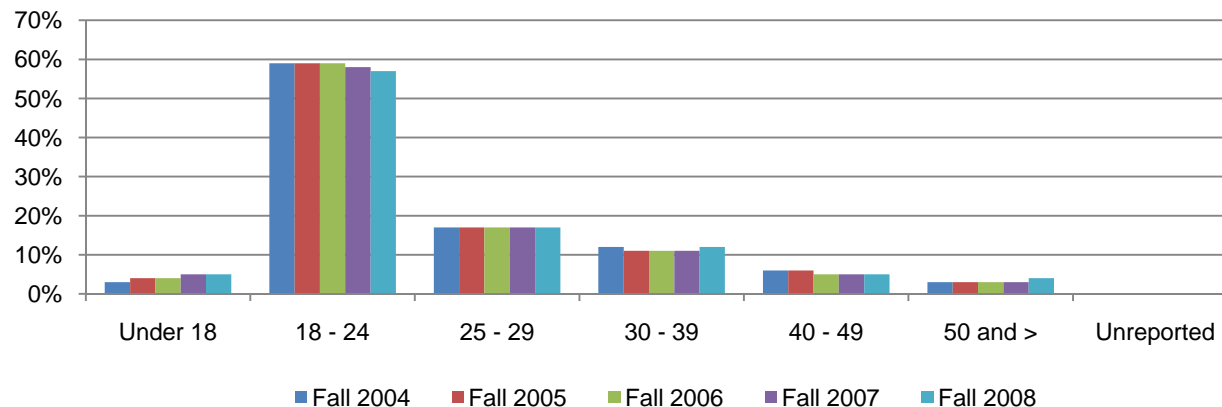


Table 1.4. Mesa College Headcount by Age

	Fall 2004		Fall 2005		Fall 2006		Fall 2007		Fall 2008		% Change Fall 04-08	College Average Fall 04-08	All Colleges Average Fall 04-08
	Headcount	%	Headcount	%	Headcount	%	Headcount	%	Headcount	%			
Under 18	767	3%	785	4%	861	4%	1,078	5%	1,205	5%	57%	4%	3%
18 - 24	13,502	59%	12,912	59%	12,973	59%	13,088	58%	13,189	57%	-2%	58%	53%
25 - 29	3,901	17%	3,595	17%	3,655	17%	3,841	17%	4,034	17%	3%	17%	17%
30 - 39	2,829	12%	2,490	11%	2,495	11%	2,538	11%	2,749	12%	-3%	12%	15%
40 - 49	1,323	6%	1,241	6%	1,163	5%	1,179	5%	1,269	5%	-4%	5%	8%
50 and >	693	3%	660	3%	690	3%	699	3%	869	4%	25%	3%	5%
Unreported	30	0%	53	0%	42	0%	21	0%	8	0%	-73%	0%	0%
Total	23,045	100%	21,736	100%	21,879	100%	22,444	100%	23,323	100%	1%	100%	100%

Source: SDCCD Information System

Mesa College Section I: Headcount and Student Characteristics

Headcount by Enrollment Status: On average, 64% of the student population were continuing students. The number of current high school students who were enrolled at Mesa College increased 39%, from 1,094 students in Fall 2004 to 1,523 in Fall 2008. In contrast, the number of first time transfer and returning transfer students decreased 8% each between Fall 2004 and Fall 2008.

Figure 1.5. Mesa College Headcount by Enrollment Status

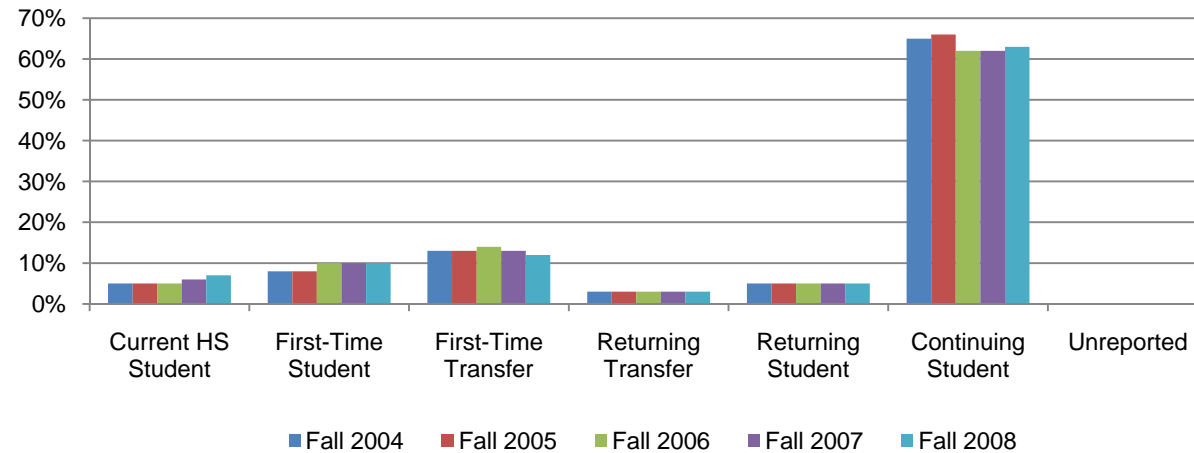


Table 1.5. Mesa College Headcount by Enrollment Status

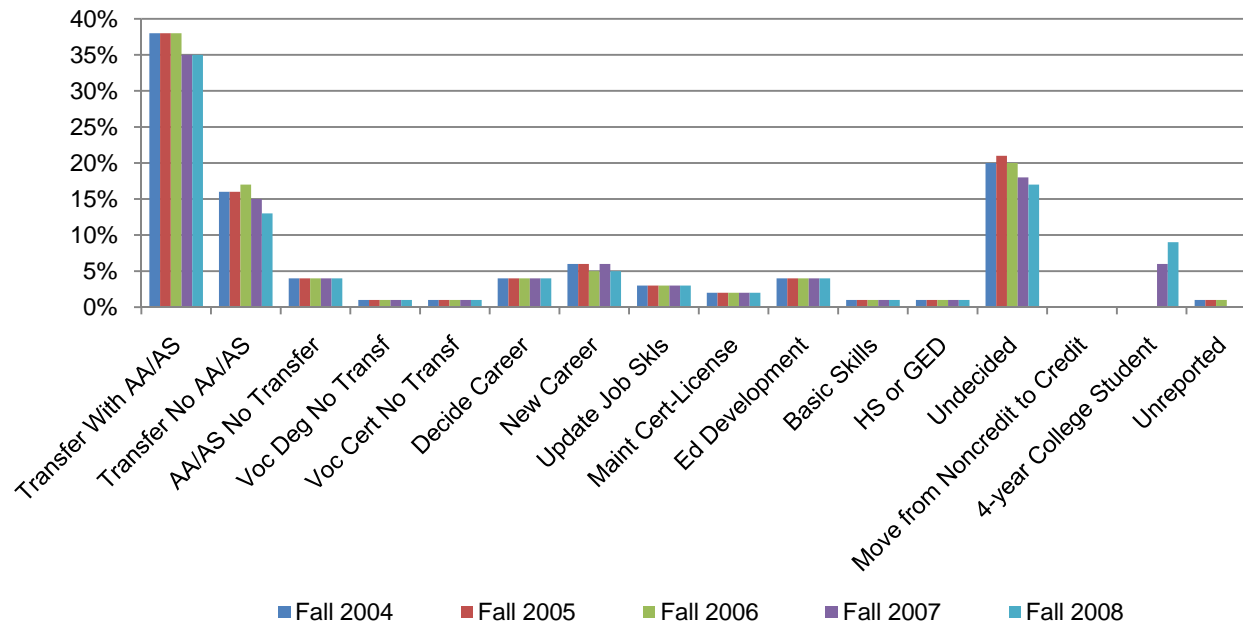
	Fall 2004		Fall 2005		Fall 2006		Fall 2007		Fall 2008		% Change Fall 04-08	College Average Fall 04-08	All Colleges Average Fall 04-08
	Headcount	%	Headcount	%	Headcount	%	Headcount	%	Headcount	%			
Current HS Student	1,094	5%	1,051	5%	1,126	5%	1,389	6%	1,523	7%	39%	5%	4%
First-Time Student	1,854	8%	1,667	8%	2,237	10%	2,206	10%	2,260	10%	22%	9%	10%
First-Time Transfer	3,070	13%	2,917	13%	2,982	14%	2,985	13%	2,822	12%	-8%	13%	14%
Returning Transfer	760	3%	675	3%	713	3%	726	3%	698	3%	-8%	3%	4%
Returning Student	1,197	5%	979	5%	1,146	5%	1,188	5%	1,193	5%	0%	5%	6%
Continuing Student	15,003	65%	14,341	66%	13,579	62%	13,893	62%	14,770	63%	-2%	64%	61%
Unreported	67	0%	106	0%	96	0%	57	0%	57	0%	-15%	0%	1%
Total	23,045	100%	21,736	100%	21,879	100%	22,444	100%	23,323	100%	1%	100%	100%

Source: SDCCD Information System

Mesa College Section I: Headcount and Student Characteristics

Headcount by Educational Objective: Almost half of the Mesa student population (52%) selected transfer with or without an AA/AS degree as their educational objective during the five fall terms being reported. Obtaining a high school diploma or GED, as an educational objective, increased 71% among students from Fall 2004 to Fall 2008.

Figure 1.6. Mesa College Headcount by Educational Objective



Mesa College Section I: Headcount and Student Characteristics

Table 1.6. Mesa College Headcount by Educational Objective

	Fall 2004		Fall 2005		Fall 2006		Fall 2007		Fall 2008		% Change Fall 04-08	College Average Fall 04-08	All Colleges Average Fall 04-08
Transfer With AA/AS	8,748	38%	8,155	38%	8,236	38%	7,961	35%	8,090	35%	-8%	37%	34%
Transfer No AA/AS	3,660	16%	3,490	16%	3,620	17%	3,265	15%	3,099	13%	-15%	15%	13%
AA No Transfer	863	4%	852	4%	879	4%	934	4%	989	4%	15%	4%	5%
Voc Deg No Transfer	149	1%	117	1%	133	1%	133	1%	155	1%	4%	1%	1%
Voc Cert No Transfer	215	1%	186	1%	175	1%	188	1%	228	1%	6%	1%	1%
Decide Career	932	4%	846	4%	904	4%	917	4%	959	4%	3%	4%	4%
New Career	1,337	6%	1,200	6%	1,191	5%	1,244	6%	1,281	5%	-4%	6%	8%
Update Job Skills	676	3%	601	3%	634	3%	707	3%	670	3%	-1%	3%	5%
Maint Cert-License	395	2%	365	2%	339	2%	356	2%	394	2%	0%	2%	2%
Ed Development	922	4%	941	4%	964	4%	911	4%	961	4%	4%	4%	4%
Basic Skills	199	1%	189	1%	194	1%	162	1%	150	1%	-25%	1%	1%
HS or GED	119	1%	143	1%	159	1%	162	1%	204	1%	71%	1%	1%
Undecided	4,596	20%	4,462	21%	4,295	20%	4,063	18%	3,973	17%	-14%	19%	18%
Move from Noncredit to Credit	0	0%	0	0%	0	0%	12	0%	27	0%	--	0%	0%
4-year College Student	0	0%	0	0%	0	0%	1,317	6%	2,056	9%	--	3%	3%
Unreported	234	1%	189	1%	156	1%	112	0%	87	0%	-63%	1%	1%
Total	23,045	100%	21,736	100%	21,879	100%	22,444	100%	23,323	100%	1%	100%	100%

Source: SDCCD Information System

Mesa College Section I: Headcount and Student Characteristics

Headcount by Primary Language: On average, 94% of the Mesa student population spoke English as their primary language, which was consistent with the all colleges in the district average (93%). There was a slight increase for those who reported speaking English and those who spoke a language other than English (1% and 2%, respectively), which was consistent with the overall increase in headcount from Fall 2004 to Fall 2008.

Figure 1.7. Mesa College Headcount by Primary Language

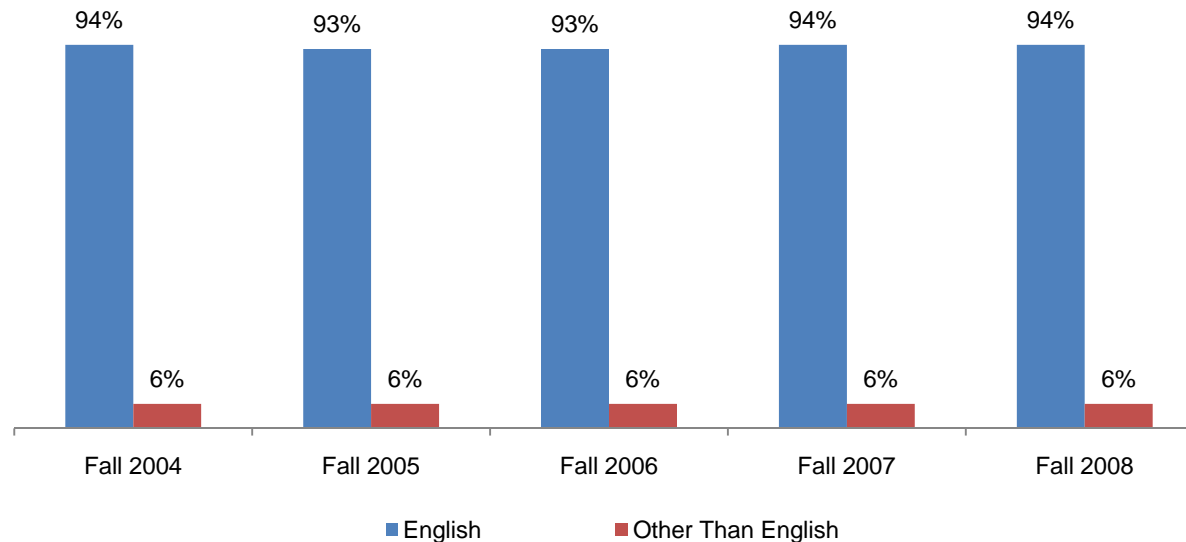


Table 1.7. Mesa College Headcount by Primary Language

	Fall 2004		Fall 2005		Fall 2006		Fall 2007		Fall 2008		% Change Fall 04-08	College Average Fall 04-08	All Colleges Average Fall 04-08
English	21,581	94%	20,254	93%	20,414	93%	21,024	94%	21,883	94%	1%	94%	93%
Other Than English	1,391	6%	1,406	6%	1,407	6%	1,386	6%	1,424	6%	2%	6%	6%
Unreported	73	0%	76	0%	58	0%	34	0%	16	0%	-78%	0%	0%
Total	23,045	100%	21,736	100%	21,879	100%	22,444	100%	23,323	100%	1%	100%	100%

Source: SDCCD Information System

Mesa College Section I: Headcount and Student Characteristics

Headcount by Prior Education Level: From Fall 2004 to Fall 2008, a majority of the Mesa College student population reported that they were high school graduates (68%). Mesa students who were current high school students increased 32% between Fall 2004 and Fall 2008. Eleven percent of the Mesa student population had a bachelor's degree or higher and approximately one-tenth were either current high school students (6%) or graduated from a foreign high school (5%).

Figure 1.8. Mesa College Headcount by Prior Education Level

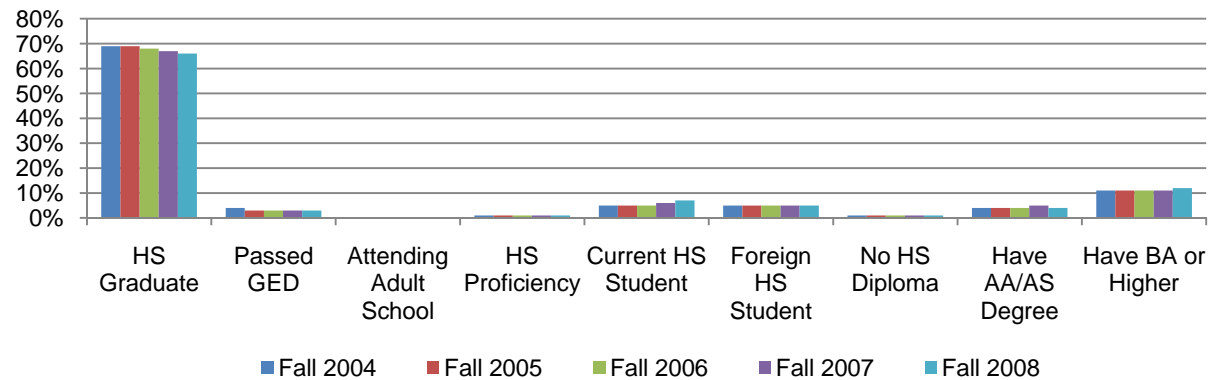


Table 1.8. Mesa College Headcount by Prior Education Level

	Fall 2004		Fall 2005		Fall 2006		Fall 2007		Fall 2008		% Change Fall 04-08	College Average Fall 04-08	All Colleges Average Fall 04-08
HS Graduate	15,817	69%	14,942	69%	14,925	68%	15,005	67%	15,457	66%	-2%	68%	67%
Passed GED	819	4%	740	3%	730	3%	743	3%	815	3%	0%	3%	5%
Attending Adult School	46	0%	78	0%	55	0%	43	0%	53	0%	15%	0%	0%
HS Proficiency	197	1%	197	1%	197	1%	167	1%	186	1%	-6%	1%	1%
Current HS Student	1,154	5%	1,091	5%	1,149	5%	1,387	6%	1,522	7%	32%	6%	4%
Foreign HS Student	1,118	5%	1,096	5%	1,137	5%	1,192	5%	1,167	5%	4%	5%	5%
No HS Diploma	277	1%	255	1%	278	1%	297	1%	313	1%	13%	1%	2%
Have AA/AS Degree	1,003	4%	946	4%	976	4%	1,018	5%	1,012	4%	1%	4%	5%
Have BA or Higher	2,584	11%	2,338	11%	2,390	11%	2,572	11%	2,791	12%	8%	11%	11%
Unreported	30	0%	53	0%	42	0%	20	0%	7	0%	-77%	0%	0%
Total	23,045	100%	21,736	100%	21,879	100%	22,444	100%	23,323	100%	1%	100%	100%

Source: SDCCD Information System

Mesa College Section I: Headcount and Student Characteristics

Headcount by Service Area of Residence: Between Fall 2004 and Fall 2008, on average, 35% of the students who resided within the Mesa service area attended Mesa College. Among the three college service areas, the greatest proportion of Mesa students resided within its service area. Thirty percent of the students who resided outside of the District service area attended Mesa College.

Figure 1.9. Mesa College Headcount by Service Area of Residence

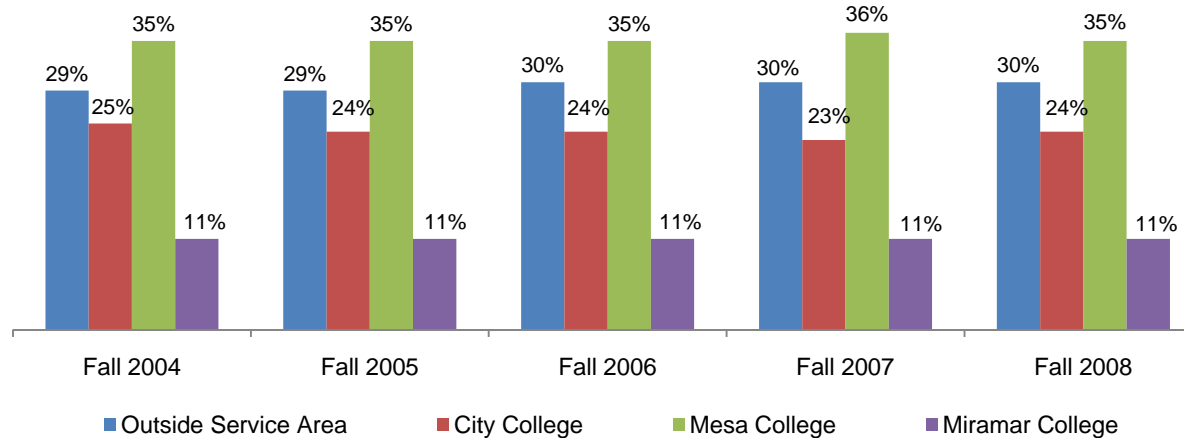


Table 1.9. Mesa College Headcount by Service Area of Residence

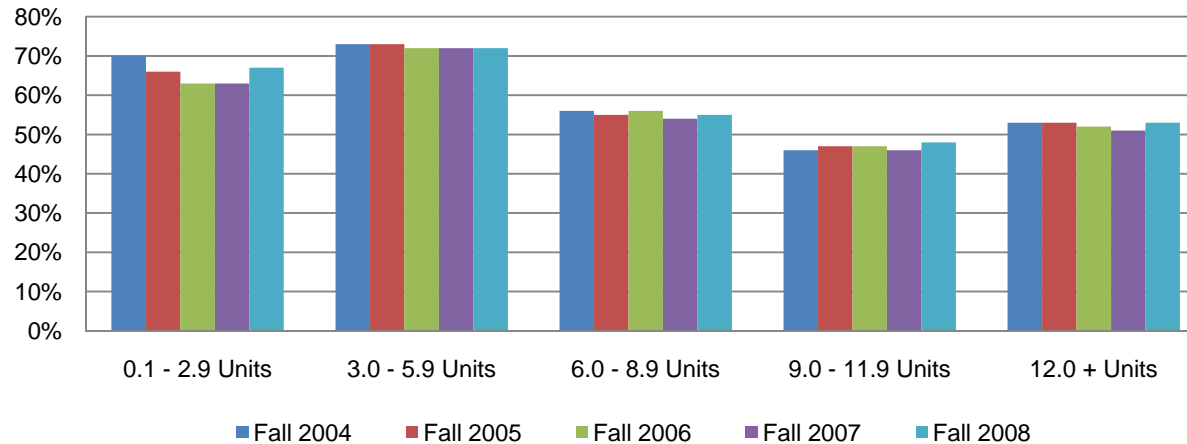
	Fall 2004		Fall 2005		Fall 2006		Fall 2007		Fall 2008		% Change Fall 04-08	College Average Fall 04-08	All Colleges Average Fall 04-08
Outside District Service Area	6,707	29%	6,373	29%	6,565	30%	6,631	30%	6,950	30%	4%	30%	36%
City College	5,659	25%	5,172	24%	5,159	24%	5,171	23%	5,585	24%	-1%	24%	30%
Mesa College	8,036	35%	7,645	35%	7,627	35%	8,080	36%	8,177	35%	2%	35%	22%
Miramar College	2,613	11%	2,493	11%	2,486	11%	2,542	11%	2,604	11%	0%	11%	12%
Unreported	30	0%	53	0%	42	0%	20	0%	7	0%	-77%	0%	0%
Total	23,045	100%	21,736	100%	21,879	100%	22,444	100%	23,323	100%	1%	100%	100%

Source: SDCCD Information System

Mesa College Section I: Headcount and Student Characteristics

Headcount by Units Attempted by Units Earned: Table 1.10 shows the number of units earned (in columns) for each range of the number of units attempted (in rows). The greatest proportion of students who attempted and earned the maximum number of units attempted were those in the 3.0-5.9 unit range on average (72%). The least proportion of students who attempted and earned the maximum number of units attempted were those in the 9.0-11.9 unit range on average (47%). The number of students who attempted and earned 3.0-5.9 units increased 8% over the five terms being reported, while the number of students who attempted and earned 12 or more units decreased 10% between Fall 2004 and Fall 2008.

Figure 1.10. Mesa College Headcount by Units Attempted by Units Earned



Mesa College Section I: Headcount and Student Characteristics

Table 1.10. Mesa College Headcount by Units Attempted by Units Earned

		Units Earned						
		0 Units	0.1 - 2.9 Units	3.0 - 5.9 Units	6.0 - 8.9 Units	9.0 - 11.9 Units	12.0 + Units	
Units Attempted	Fall 2004	0.1 - 2.9 Units	30%	70%				
		3.0 - 5.9 Units	26%	2%	73%			
		6.0 - 8.9 Units	19%	2%	23%	56%		
		9.0 - 11.9 Units	16%	2%	13%	23%	46%	
		12.0 + Units	8%	1%	7%	12%	19%	53%
Fall 2005	0.1 - 2.9 Units	34%	66%					
	3.0 - 5.9 Units	26%	1%	73%				
	6.0 - 8.9 Units	21%	2%	22%	55%			
	9.0 - 11.9 Units	16%	1%	15%	20%	47%		
	12.0 + Units	9%	1%	7%	12%	18%	53%	
Fall 2006	0.1 - 2.9 Units	37%	63%					
	3.0 - 5.9 Units	26%	1%	72%				
	6.0 - 8.9 Units	20%	1%	22%	56%			
	9.0 - 11.9 Units	16%	2%	13%	22%	47%		
	12.0 + Units	10%	1%	7%	12%	18%	52%	
Fall 2007	0.1 - 2.9 Units	37%	63%					
	3.0 - 5.9 Units	26%	1%	72%				
	6.0 - 8.9 Units	21%	2%	23%	54%			
	9.0 - 11.9 Units	16%	1%	15%	22%	46%		
	12.0 + Units	8%	1%	8%	12%	20%	51%	
Fall 2008	0.1 - 2.9 Units	33%	67%					
	3.0 - 5.9 Units	27%	2%	72%				
	6.0 - 8.9 Units	20%	2%	23%	55%			
	9.0 - 11.9 Units	15%	2%	14%	20%	48%		
	12.0 + Units	8%	1%	8%	12%	19%	53%	
% Change Fall 04-08		--	-4%	8%	3%	3%	-10%	
College Average Fall 04-08		--	66%	72%	55%	47%	53%	

Source: SDCCD Information System

Note: Tutoring and non-graded courses were excluded. Percent change was based on counts.

Mesa College Section I: Headcount and Student Characteristics

Headcount by First Generation: From Fall 2004 to Fall 2008, on average, nearly one-quarter of the Mesa student population reported being first generation college students (22%). Both groups of students, those who were and those who were not first generation college students, displayed an increase in headcount between Fall 2004 and Fall 2008 (8% and 4%, respectively), which paralleled the overall collegewide increase in headcount.

Figure 1.11. Mesa College Headcount by First Generation

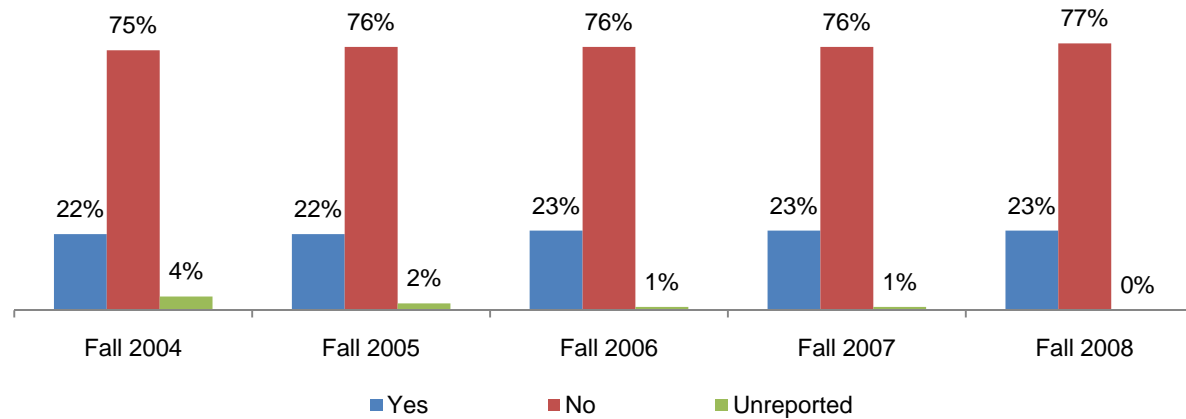


Table 1.11. Mesa College Headcount by First Generation

	Fall 2004		Fall 2005		Fall 2006		Fall 2007		Fall 2008		% Change Fall 04-08	College Average Fall 04-08	All Colleges Average Fall 04-08
Yes	4,968	22%	4,806	22%	4,936	23%	5,163	23%	5,352	23%	8%	22%	25%
No	17,212	75%	16,472	76%	16,678	76%	17,124	76%	17,880	77%	4%	76%	73%
Unreported	865	4%	458	2%	265	1%	157	1%	91	0%	-89%	2%	2%
Total	23,045	100%	21,736	100%	21,879	100%	22,444	100%	23,323	100%	1%	100%	100%

Source: SDCCD Information System

Mesa College Section I: Headcount and Student Characteristics

Headcount by Income Level: Between Fall 2004 and Fall 2008, one-quarter (25%) of the Mesa student population reported making \$33,000 or more a year on average. The number of students who reported making between \$0-2,999 a year on average increased 40% between Fall 2004 and Fall 2008. It should be noted that nearly one-third of students did not report their income level. Consequently, the data may not be representative of the actual income levels of students at Mesa College.

Figure 1.12. Mesa College Headcount by Income Level

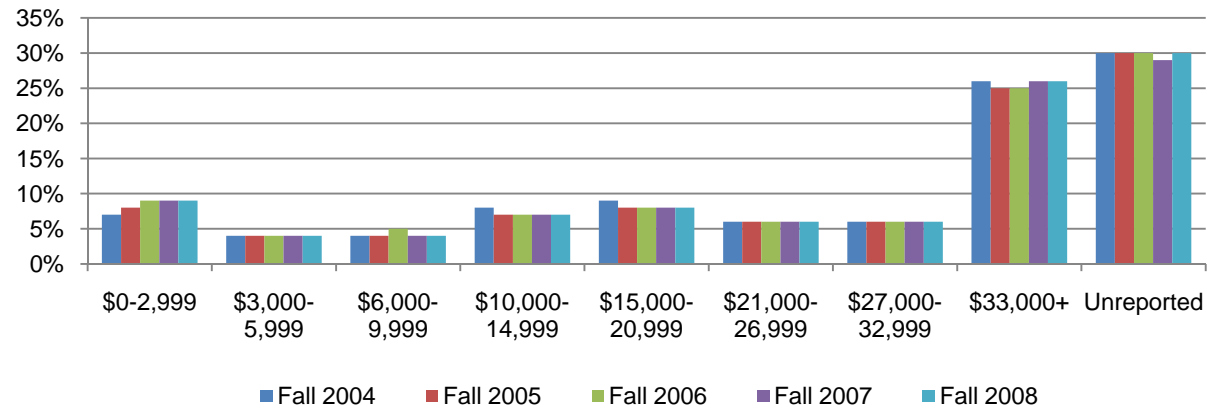


Table 1.12. Mesa College Headcount by Income Level

	Fall 2004		Fall 2005		Fall 2006		Fall 2007		Fall 2008		% Change Fall 04-08	College Average Fall 04-08	All Colleges Average Fall 04-08
	Headcount	%	Headcount	%	Headcount	%	Headcount	%	Headcount	%			
\$0-2,999	1,579	7%	1,751	8%	1,965	9%	2,090	9%	2,207	9%	40%	9%	13%
\$3,000-5,999	863	4%	867	4%	860	4%	860	4%	864	4%	0%	4%	1%
\$6,000-9,999	1,001	4%	959	4%	997	5%	972	4%	1,005	4%	0%	4%	2%
\$10,000-14,999	1,754	8%	1,574	7%	1,586	7%	1,657	7%	1,718	7%	-2%	7%	6%
\$15,000-20,999	1,965	9%	1,814	8%	1,797	8%	1,747	8%	1,842	8%	-6%	8%	5%
\$21,000-26,999	1,453	6%	1,380	6%	1,332	6%	1,383	6%	1,370	6%	-6%	6%	2%
\$27,000-32,999	1,489	6%	1,401	6%	1,369	6%	1,428	6%	1,384	6%	-7%	6%	3%
\$33,000+	5,917	26%	5,476	25%	5,509	25%	5,742	26%	6,003	26%	1%	25%	10%
Unreported	7,024	30%	6,514	30%	6,464	30%	6,565	29%	6,930	30%	-1%	30%	58%
Total	23,045	100%	21,736	100%	21,879	100%	22,444	100%	23,323	100%	1%	100%	100%

Source: SDCCD Information System

Mesa College Section I: Headcount and Student Characteristics

Disability Support Programs and Services (DSPS): On average, 97% of the Mesa student population had not received any type of disability support services between Fall 2004 and Fall 2008. This was comparable to the percentage of the overall student population for all colleges in the district. Moreover, the number of students who had not received disability services and those who received disability services increased 1% and 7%, respectively, from Fall 2004 to Fall 2008.

Figure 1.13. Mesa College Headcount by Disability Support Programs and Services (DSPS)

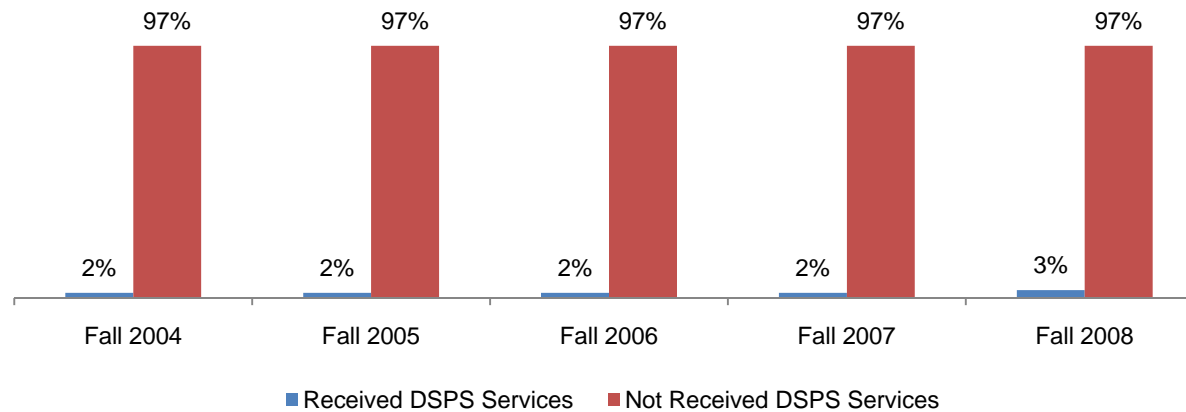


Table 1.13. Mesa College Headcount by Disability Support Programs and Services (DSPS)

	Fall 2004		Fall 2005		Fall 2006		Fall 2007		Fall 2008		% Change Fall 04-08	College Average Fall 04-08	All Colleges Average Fall 04-08
Received DSPS Services	550	2%	510	2%	544	2%	545	2%	588	3%	7%	2%	3%
Not Received DSPS Services	22,465	97%	21,173	97%	21,293	97%	21,879	97%	22,728	97%	1%	97%	97%
Unreported	30	0%	53	0%	42	0%	20	0%	7	0%	-77%	0%	0%
Total	23,045	100%	21,736	100%	21,879	100%	22,444	100%	23,323	100%	1%	100%	100%

Source: SDCCD Information System

Mesa College Section I: Headcount and Student Characteristics

Headcount by Extended Opportunity Programs and Services (EOPS): On average, 97% of the Mesa student population had not received EOPS services between Fall 2004 and Fall 2008. This was comparable to the percentage of the overall student population for all colleges in the district. However, at Mesa there was a 10% decrease in the number of students who received EOPS services from Fall 2004 to Fall 2008.

Figure 1.14. Mesa College Headcount by Extended Opportunity Programs and Services (EOPS)

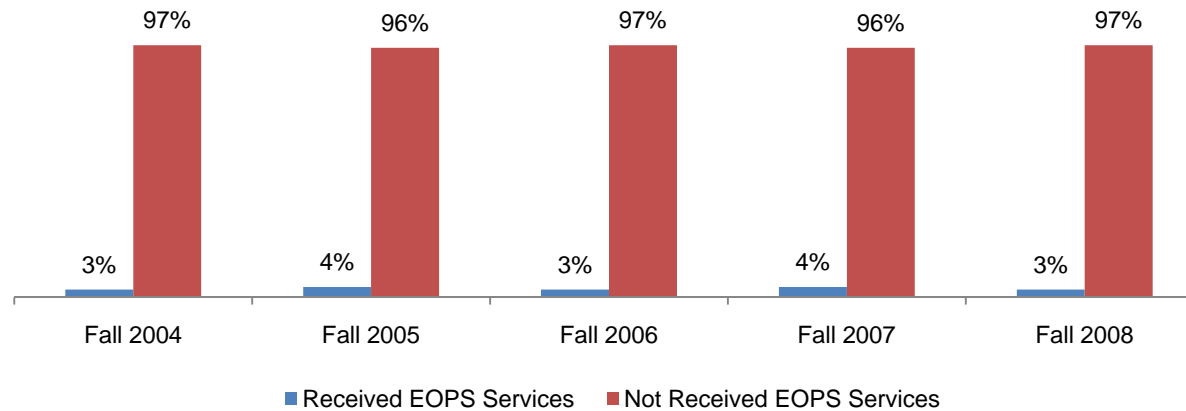


Table 1.14. Mesa College Headcount by Extended Opportunity Programs and Services (EOPS)

	Fall 2004		Fall 2005		Fall 2006		Fall 2007		Fall 2008		% Change Fall 04-08	College Average Fall 04-08	All Colleges Average Fall 04-08
	Count	%	Count	%	Count	%	Count	%	Count	%			
Received EOPS Services	730	3%	774	4%	626	3%	797	4%	660	3%	-10%	3%	3%
Not Received EOPS Services	22,285	97%	20,909	96%	21,211	97%	21,627	96%	22,656	97%	2%	97%	96%
Unreported	30	0%	53	0%	42	0%	20	0%	7	0%	-77%	0%	0%
Total	23,045	100%	21,736	100%	21,879	100%	22,444	100%	23,323	100%	1%	100%	100%

Source: SDCCD Information System

Section II
Term Persistence Rates

Mesa College Section II: Term Persistence Rates

This section of the Fact Book contains information on first-time to college student term persistence rates. For purposes of this report, term persistence rate is the measure of first-time to college students who were enrolled in a fall term as of census (eliminating drops and never attends prior to census) and who completed the term with a grade notation of A, B, C, CR (Credit), D, F, I, NC (Non-Credit), or RD (Report Delayed), then were enrolled as of census in the subsequent spring term and received a grade notation for that term. The information in this section includes five years of data and is reported as follows:

- 1) Overall
- 2) Gender
- 3) Age
- 4) Ethnicity

Mesa College Section II: Term Persistence Rates

Overall Term Persistence Rates: The average term persistence rates for first-time Mesa students was 64% between the Fall 2004 and Fall 2008 cohorts. Persistence rates dipped to a low of 60% in the Fall 2005 cohort and peaked to a high of 68% in the Fall 2008 cohort. Overall, persistence rates increased 5% from the Fall 2004 cohort to the Fall 2008 cohort. The average term persistence rate for first-time Mesa students (64%) was slightly lower compared to the average term persistence rate of first-time students enrolled in all colleges in the district (66%).

Figure 2.1. Mesa College Overall First-Time Student Term Persistence Rates

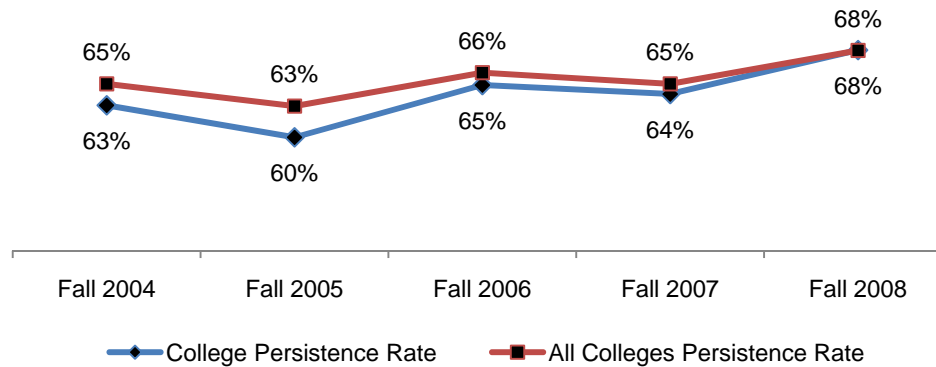


Table 2.1. Mesa College Overall First-Time Student Term Persistence Rates

Cohort	Fall	Spring	Persistence	Fall to Spring All Colleges Persistence
Fall 2004	1,381	871	63%	65%
Fall 2005	1,113	670	60%	63%
Fall 2006	1,615	1,048	65%	66%
Fall 2007	1,679	1,076	64%	65%
Fall 2008	1,733	1,179	68%	68%
Average			64%	66%

Source: SDCCD Information System

Mesa College Section II: Term Persistence Rates

Term Persistence Rates by Gender: On average, female term persistence rates (65%) were higher than their male student counterpart (63%) between the Fall 2004 and the Fall 2008 cohorts. Persistence rates increased more for female students (10%) than for male students (1%) from the Fall 2004 cohort to the Fall 2008 cohort.

Figure 2.2. Mesa College First-Time Student Term Persistence Rates by Gender

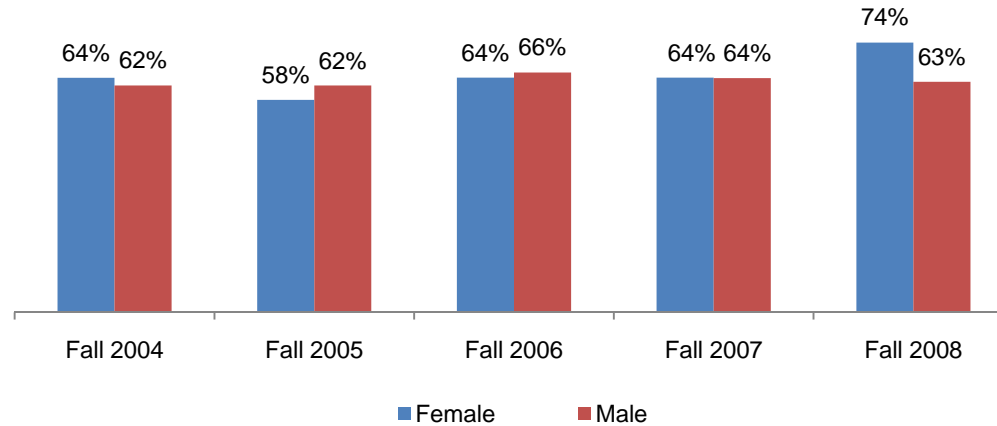


Table 2.2. Mesa College First-Time Student Term Persistence Rates by Gender

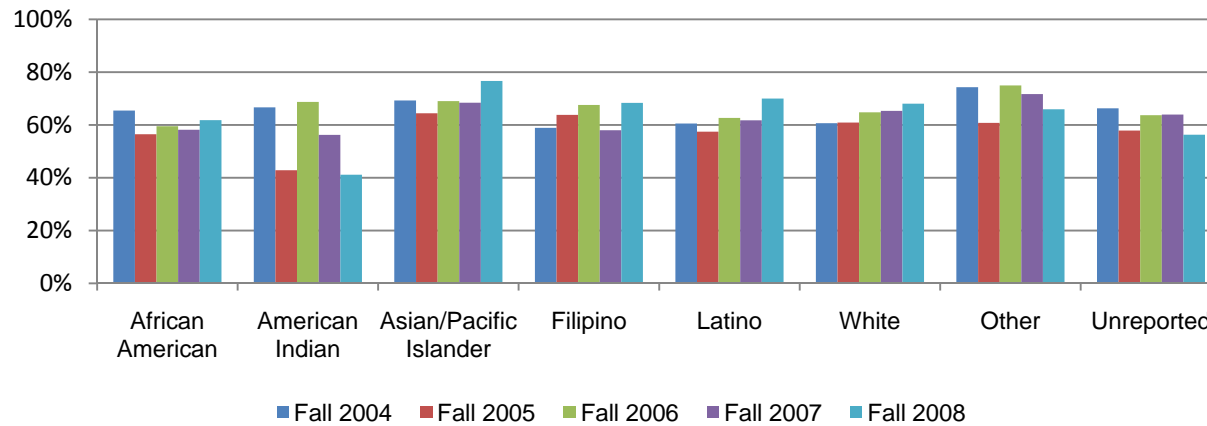
Cohort	Male			Female			Unreported		
	Fall	Spring	Persistence	Fall	Spring	Persistence	Fall	Spring	Persistence
Fall 2004	695	431	62%	685	439	64%	1	1	100%
Fall 2005	605	375	62%	508	295	58%	0	0	--
Fall 2006	842	552	66%	773	496	64%	0	0	--
Fall 2007	848	543	64%	831	533	64%	0	0	--
Fall 2008	914	576	63%	818	603	74%	1	0	0%
Average			63%			65%			50%

Source: SDCCD Information System

Mesa College Section II: Term Persistence Rates

Term Persistence Rates by Ethnicity: The ethnic groups with the highest term persistence rates, on average, were Asian/Pacific Islander students (70%), students who were categorized as ‘Other’ ethnicities (69%), and White students (64%). Persistence rates of American Indian students decreased 26%, from 67% in the Fall 2004 cohort to 41% in the Fall 2008 cohort. However, persistence rates of Latino and Filipino students increased 9% each between the Fall 2004 and Fall 2008 cohorts. Persistence rates peaked to a high of 77% for Asian/Pacific Islander students in the Fall 2008 cohort. Persistence rates of Latino and African American students peaked to a high of 70% and 65%, respectively, in the Fall 2008 and Fall 2004 cohorts.

Figure 2.3. Mesa College First-Time Student Term Persistence Rates by Ethnicity



Mesa College Section II: Term Persistence Rates

Table 2.3. Mesa College First-Time Student Term Persistence Rates by Ethnicity

Cohort	African American			American Indian			Asian/Pacific Islander			Filipino		
	Fall	Spring	Persistence	Fall	Spring	Persistence	Fall	Spring	Persistence	Fall	Spring	Persistence
Fall 2004	110	72	65%	12	8	67%	218	151	69%	73	43	59%
Fall 2005	85	48	56%	7	3	43%	177	114	64%	47	30	64%
Fall 2006	121	72	60%	16	11	69%	239	165	69%	74	50	68%
Fall 2007	134	78	58%	16	9	56%	247	169	68%	69	40	58%
Fall 2008	110	68	62%	17	7	41%	227	174	77%	79	54	68%
Average			60%			56%			70%			63%

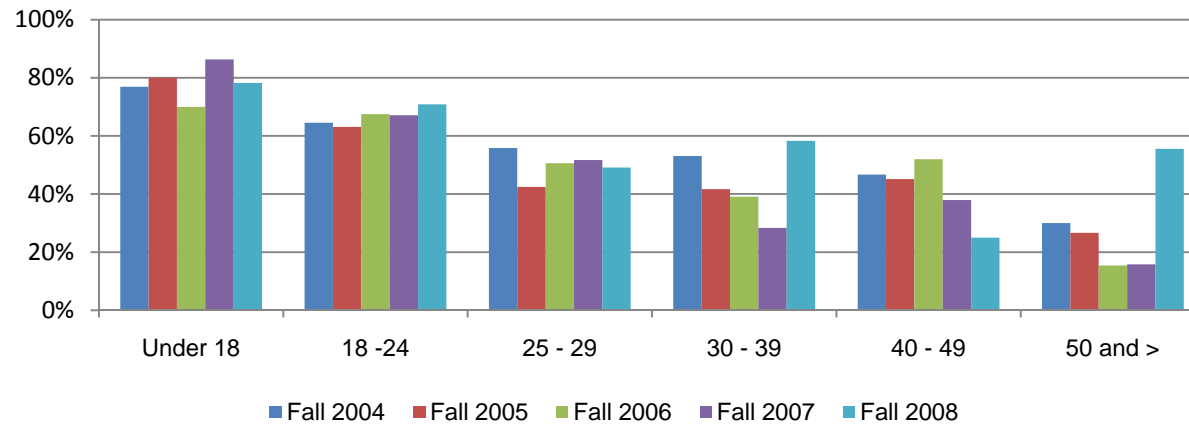
Cohort	Latino			White			Other			Unreported		
	Fall	Spring	Persistence	Fall	Spring	Persistence	Fall	Spring	Persistence	Fall	Spring	Persistence
Fall 2004	271	164	61%	564	342	61%	35	26	74%	98	65	66%
Fall 2005	235	135	57%	435	265	61%	51	31	61%	76	44	58%
Fall 2006	335	210	63%	659	427	65%	36	27	75%	135	86	64%
Fall 2007	403	249	62%	646	422	65%	53	38	72%	111	71	64%
Fall 2008	413	289	70%	705	480	68%	47	31	66%	135	76	56%
Average			63%			64%			69%			62%

Source: SDCCD Information System

Mesa College Section II: Term Persistence Rates

Term Persistence Rates by Age: A general trend among the Fall 2004 to Fall 2008 cohorts showed that as age increased, term persistence decreased. For students under age 18, persistence rates peaked to a high of 86% in the Fall 2007 cohort. Persistence rates of students 50 years and older increased 26%, from 30% in the Fall 2004 cohort to 56% in the Fall 2008 cohort. However, students between ages 40 and 49 years old displayed a 22% decline in persistence rates between the Fall 2004 and Fall 2008 cohorts.

Figure 2.4. Mesa College First-Time Student Term Persistence Rates by Age



Mesa College Section II: Term Persistence Rates

Table 2.4. Mesa College First-Time Student Term Persistence Rates by Age

	Under 18			18 - 24			25 - 29		
Cohort	Fall	Spring	Persistence	Fall	Spring	Persistence	Fall	Spring	Persistence
Fall 2004	13	10	77%	1,193	770	65%	86	48	56%
Fall 2005	25	20	80%	921	581	63%	73	31	42%
Fall 2006	20	14	70%	1,412	953	67%	81	41	51%
Fall 2007	22	19	86%	1,462	981	67%	87	45	52%
Fall 2008	23	18	78%	1,469	1,041	71%	114	56	49%
Average			79%			67%			50%

	30 - 39			40 - 49			50 and >		
Cohort	Fall	Spring	Persistence	Fall	Spring	Persistence	Fall	Spring	Persistence
Fall 2004	49	26	53%	30	14	47%	10	3	30%
Fall 2005	48	20	42%	31	14	45%	15	4	27%
Fall 2006	64	25	39%	25	13	52%	13	2	15%
Fall 2007	60	17	28%	29	11	38%	19	3	16%
Fall 2008	72	42	58%	28	7	25%	27	15	56%
Average			44%			41%			32%

Source: SDCCD Information System

Section III
Student Outcomes

Mesa College Section III: Student Outcomes

This section of the Fact Book contains information on various student outcomes which may be considered indirect assessments of student learning. The outcomes included in this section are: 1) Annual Successful Course Completion Rates, 2) Annual Retention Rates, 3) Annual GPA, 4) Annual Awards Conferred, and 5) Annual Transfer Volume. All of the information in this section includes five years of data by gender, age, and ethnicity. The following describes in detail each of the outcomes listed.

- 1) **Successful Course Completion Rates.** The first outcome reported in this section is successful course completion, or student success rate. For purposes of this report, the success rate is the percentage of students who completed a course with a grade of A, B, C, or CR out of total enrollments as of census. *Note: Tutoring and non-credit classes are excluded.*
- 2) **Retention Rates.** The second outcome reported in this section is retention rate. For purposes of this report, the retention rate is the percentage of students who completed a course with a grade of A, B, C, D, F, CR, NC, I, or RD out of total enrollments as of census.
- 3) **Annual GPA.** The third outcome reported in this section is annual GPA. For purposes of this report, the annual GPA is the cumulative term grade point average of all courses taken for a grade in one academic year.
- 4) **Annual Awards Conferred.** The fourth outcome reported in this section is the annual awards conferred. For purposes of this report, the annual awards conferred are the total number of associate degrees and certificates awarded in a single academic year (summer, fall and, spring).
- 5) **Annual Transfer Volume.** The last outcome reported in this section is the number of students who transfer annually. For the purposes of this report, the annual transfer volume represents the total number of students who transferred to a 4-year institution either during the last semester they were enrolled at an SDCCD college or up to three semesters following the last semester they were enrolled at an SDCCD college. The last semester attended includes students who stopped out for one or more semesters and enrolled at a later date (reverse transfer). The student must also have completed 12 or more cumulative transferrable units earned within 12 consecutive semesters preceding and including the last semester enrolled at SDCCD.

Note: Transfer volume that was reported by the Office of Institutional Research and Planning prior to Summer 2009 included all students regardless of the number of transferrable units completed or the time span between last semester attended and actual transfer. Consequently, the counts were much higher than the volume being reported using the current methodology.

Mesa College Section III: Student Outcomes (Success Rates)

Overall Success Rates: The annual success rates for Mesa College remained relatively stable from 2004/05 to 2008/09, with a five-year average of 66%. This five-year average success rate was comparable to the five-year average success rate of all colleges in the district (66%). The Mesa College annual success rates were higher, on average, compared to the annual success rates of all colleges in the district between 2004/05 and 2008/09.

Figure 3.1. Mesa College Overall Success Rates

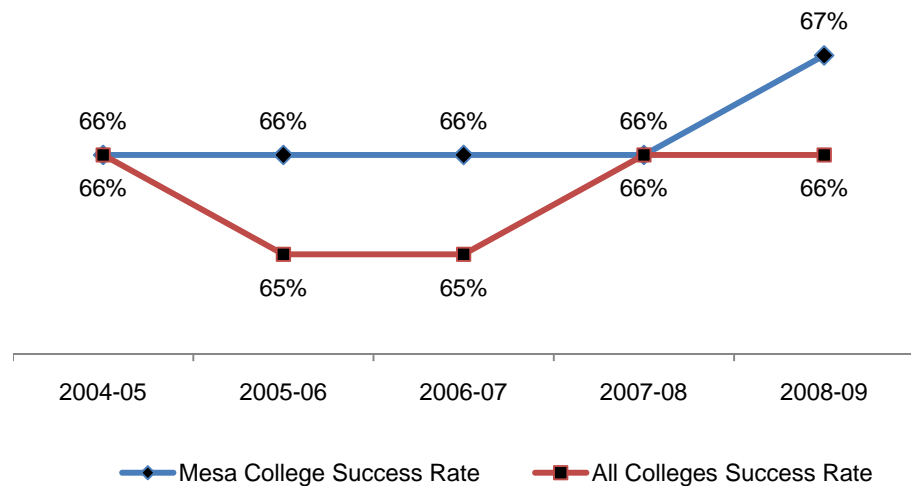


Table 3.1. Mesa College Overall Success Rates

	2004-05	2005-06	2006-07	2007-08	2008-09	% Change 04/05-08/09	College Average 2004-09	All Colleges Average 2004-09
Average	66%	66%	66%	66%	67%	1%	66%	66%

Source: SDCCD Information System

Note: Tutoring and non-credit classes were excluded.

Mesa College Section III: Student Outcomes (Success Rates)

Success Rates by Gender: On average, female students (68%) had higher success rates compared to their male student counterpart (64%) between 2004/05 and 2008/09. At Mesa College, female students had a higher average success rate compared to the female student population within all colleges in the district (66%), while male students at Mesa College had a slightly lower average success rate when compared to the male student population within all colleges in the district (65%). The average success rate of female students at Mesa exceeded the average success rates of both the general student populations at Mesa College and all colleges in the district (66% each), while the average success rate of male students at Mesa fell below the same averages.

Figure 3.2. Mesa College Success Rates by Gender

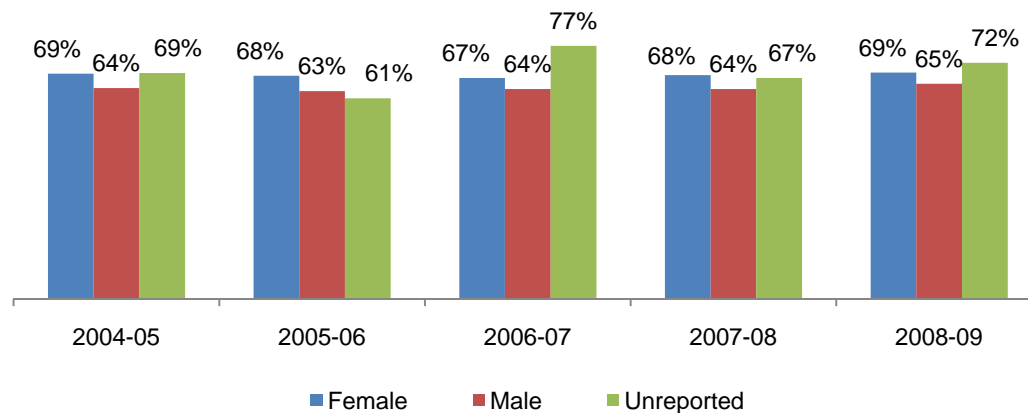


Table 3.2. Mesa College Success Rates by Gender

	2004-05	2005-06	2006-07	2007-08	2008-09	College Average 2004-09	All Colleges Average 2004-09
Female	69%	68%	67%	68%	69%	68%	66%
Male	64%	63%	64%	64%	65%	64%	65%
Unreported	69%	61%	77%	67%	72%	68%	66%
Average	66%	66%	66%	66%	67%	66%	66%

Source: SDCCD Information System

Note: Tutoring and non-credit classes were excluded.

Mesa College Section III: Student Outcomes (Success Rates)

Success Rates by Ethnicity: On average, the ethnic groups with the highest success rates were Asian/Pacific Islander students (70%), White students (69%), and students categorized as 'Other' ethnicities (66%) between 2004/05 and 2008/09. The average success rates of African American, American Indian, Filipino, and Latino students fell below both the Mesa College and the all colleges in the district general student population success rate averages of 66% each. The average success rates of Asian/Pacific Islander, White students, and students categorized as 'Other' ethnicities exceeded or were comparable to the same averages. Both Asian/Pacific Islander and Filipino students displayed an upward trend in success rates between 2004/05 and 2008/09.

Figure 3.3. Mesa College Success Rates by Ethnicity

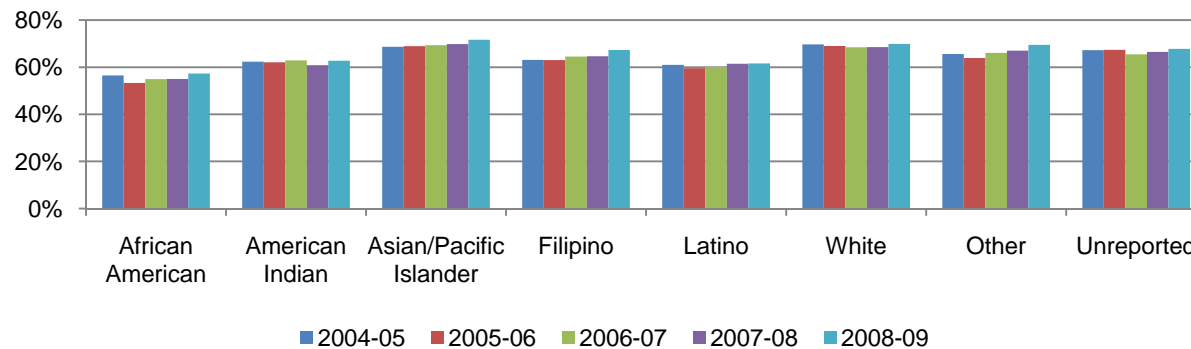


Table 3.3. Mesa College Success Rates by Ethnicity

	2004-05	2005-06	2006-07	2007-08	2008-09	College Average 2004-09	All Colleges Average 2004-09
African American	57%	53%	55%	55%	57%	55%	54%
American Indian	62%	62%	63%	61%	63%	62%	61%
Asian/Pacific Islander	69%	69%	69%	70%	72%	70%	70%
Filipino	63%	63%	65%	65%	67%	64%	66%
Latino	61%	60%	60%	61%	62%	61%	61%
White	70%	69%	68%	69%	70%	69%	70%
Other	66%	64%	66%	67%	69%	66%	65%
Unreported	67%	67%	65%	67%	68%	67%	67%
Average	66%	66%	66%	66%	67%	66%	66%

Source: SDCCD Information System

Note: Tutoring and non-credit classes were excluded.

Mesa College Section III: Student Outcomes (Success Rates)

Success Rates by Age: With the exception of students who were under age 18, a general trend between 2004/05 and 2008/09 showed as age increased so did success rates. Students who were below 18 years old had the highest success rate (84%) on average. With the exception of students ages 18-24, the average success rates of all other age groups were higher compared to the average success rates of both the general student populations at Mesa College and all colleges in the district (66% each).

Figure 3.4. Mesa College Success Rates by Age

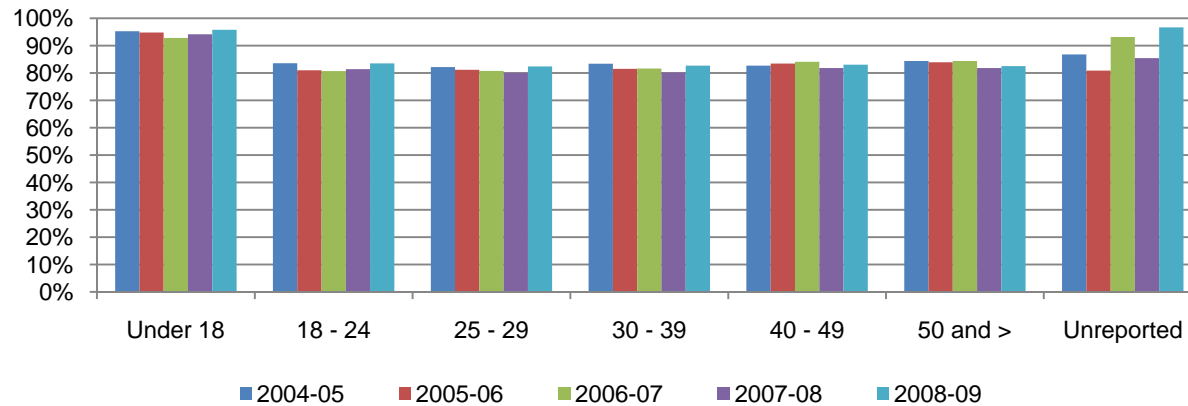


Table 3.4. Mesa College Success Rates by Age

	2004-05	2005-06	2006-07	2007-08	2008-09	College Average 2004-09	All Colleges Average 2004-09
Under 18	85%	86%	84%	88%	78%	84%	81%
18 - 24	64%	63%	63%	64%	65%	64%	63%
25 - 29	69%	69%	68%	67%	69%	68%	68%
30 - 39	71%	71%	70%	68%	70%	70%	69%
40 - 49	72%	74%	74%	72%	73%	73%	71%
50 and >	73%	74%	75%	71%	73%	73%	70%
Unreported	68%	62%	79%	75%	77%	71%	68%
Average	66%	66%	66%	66%	67%	66%	66%

Source: SDCCD Information System

Note: Tutoring and non-credit classes were excluded.

Mesa College Section III: Student Outcomes (Retention Rates)

Overall Retention Rates: The annual retention rates for Mesa College showed a 1% increase between 2004/05 and 2008/09, with a five-year average of 82%. This five-year average retention rate was comparable to the five-year average retention rate of all colleges in the district (81%). The Mesa College annual retention rates were higher, on average, compared to the annual retention rates of all colleges in the district between 2004/05 and 2008/09.

Figure 3.5. Mesa College Overall Retention Rates

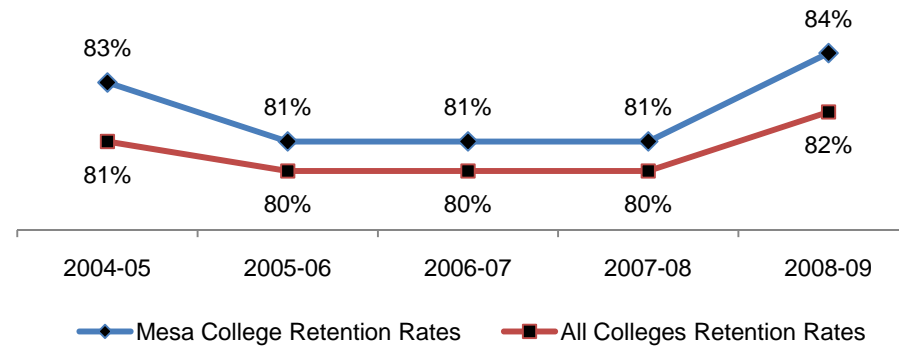


Table 3.5. Mesa College Overall Retention Rates

	2004-05	2005-06	2006-07	2007-08	2008-09	% Change 04/05-08/09	College Average 2004-09	All Colleges Average 2004-09
Average	83%	81%	81%	81%	84%	1%	82%	81%

Source: SDCCD Information System

Mesa College Section III: Student Outcomes (Retention Rates)

Retention Rates by Gender: On average, female student retention rates (83%) were comparable to their male student counterpart (82%) between 2004/05 and 2008/09. The average retention rates of both male and female students at Mesa College were higher than the average retention rates of the male and female student populations of all colleges in the district (80% and 82%, respectively). The average retention rate of male students at Mesa College was comparable to the average retention rate of the general student population at Mesa College (82%), while the average retention rate of female students at Mesa College was higher compared to the same average. Between 2004/05 and 2008/09, the average retention rates of both the male and female student populations at Mesa College were higher than the average retention rate of the general student population of all colleges in the district (81%).

Figure 3.6. Mesa College Retention Rates by Gender

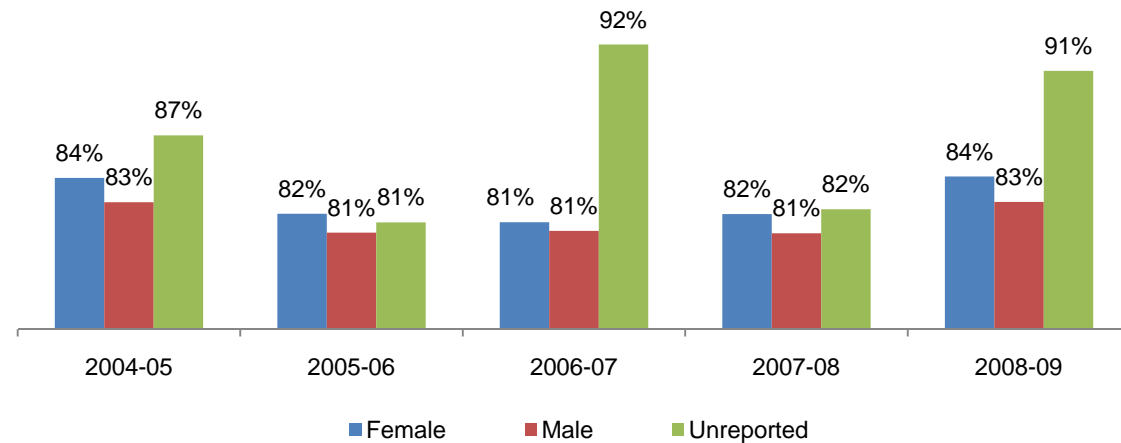


Table 3.6. Mesa College Retention Rates by Gender

	2004-05	2005-06	2006-07	2007-08	2008-09	College Average 2004-09	All Colleges Average 2004-09
Female	84%	82%	81%	82%	84%	83%	82%
Male	83%	81%	81%	81%	83%	82%	80%
Unreported	87%	81%	92%	82%	91%	86%	80%
Average	83%	81%	81%	81%	84%	82%	81%

Source: SDCCD Information System

Mesa College Section III: Student Outcomes (Retention Rates)

Retention Rates by Ethnicity: Between 2004/05 to 2008/09, the ethnic groups with the highest retention rates, on average, were Asian/Pacific Islander students (84%), and both White students and students categorized as 'Other' ethnicities (83% each). The average retention rates of African American, American Indian, Filipino, and Latino students were lower or comparable to the average retention rates of both the general student populations at Mesa College and all colleges in the district (82% and 81%, respectively). The average rates of Asian/Pacific Islander students, White students, and students categorized as 'Other' ethnicities exceeded the same averages.

Figure 3.7. Mesa College Retention Rates by Ethnicity

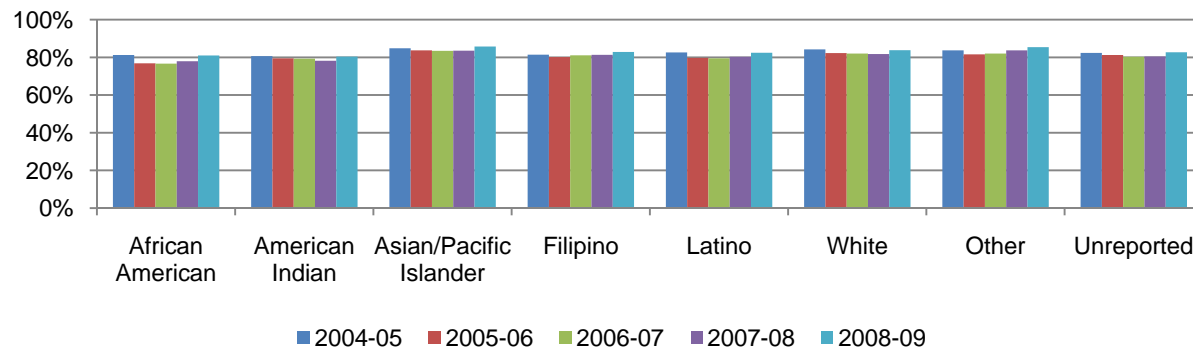


Table 3.7. Mesa College Retention Rates by Ethnicity

	2004-05	2005-06	2006-07	2007-08	2008-09	College Average 2004-09	All Colleges Average 2004-09
African American	81%	77%	77%	78%	81%	79%	78%
American Indian	81%	79%	79%	78%	80%	80%	77%
Asian/Pacific Islander	85%	84%	83%	84%	86%	84%	84%
Filipino	81%	80%	81%	81%	83%	81%	82%
Latino	83%	80%	80%	80%	82%	81%	81%
White	84%	82%	82%	82%	84%	83%	81%
Other	84%	82%	82%	84%	85%	83%	82%
Unreported	82%	81%	80%	80%	83%	81%	80%
Average	83%	81%	81%	81%	84%	82%	81%

Source: SDCCD Information System

Mesa College Section III: Student Outcomes (Retention Rates)

Retention Rates by Age: Between 2004/05 and 2008/09, the age groups with the highest retention rates, on average, were students who were below 18 years old (95%), and both students between ages 40-49 and 50 years and older (83% each). The average retention rates of students between ages 18 and 39 years old were lower or comparable to the average retention rates of both the general student populations at Mesa College and all colleges in the district (82% and 81%, respectively). The average retention rates of students who were below 18 years old, and students between ages 40-49 and 50 years and older exceeded the same averages.

Figure 3.8. Mesa College Retention Rates by Age

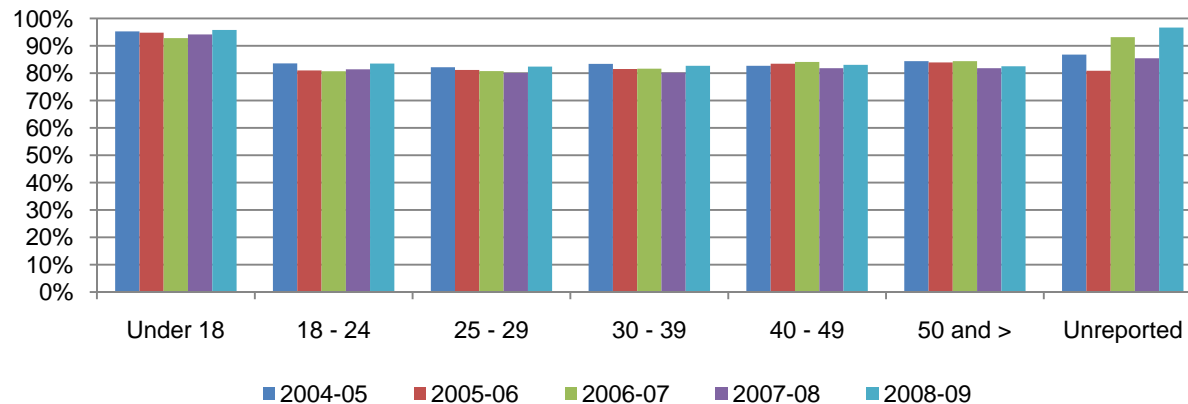


Table 3.8. Mesa College Retention Rates by Age

	2004-05	2005-06	2006-07	2007-08	2008-09	College Average 2004-09	All Colleges Average 2004-09
Under 18	95%	95%	93%	94%	96%	95%	93%
18 - 24	84%	81%	81%	81%	84%	82%	82%
25 - 29	82%	81%	81%	80%	82%	81%	80%
30 - 39	83%	82%	82%	80%	83%	82%	78%
40 - 49	83%	83%	84%	82%	83%	83%	76%
50 and >	84%	84%	84%	82%	83%	83%	78%
Unreported	87%	81%	93%	85%	97%	87%	79%
Average	83%	81%	81%	81%	84%	82%	81%

Source: SDCCD Information System

Mesa College Section III: Student Outcomes (Annual GPA)

Overall Annual GPA: The annual GPA for Mesa College students increased between 2004/05 and 2008/09, with a five-year average of 2.70. Mesa's collegewide five-year average annual GPA was slightly lower than the five-year average annual GPA of all colleges in the district (2.73). The Mesa College annual GPAs were lower, on average, compared to the annual GPAs of all colleges in the district between 2004/05 and 2008/09.

Figure 3.9. Mesa College Overall Annual GPA

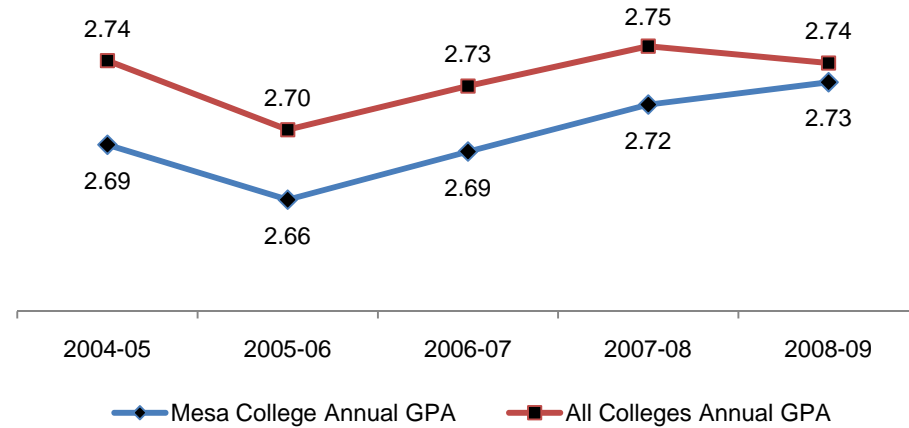


Table 3.9. Mesa College Overall Annual GPA

	2004-05	2005-06	2006-07	2007-08	2008-09	College Average 2004-09	All Colleges Average 2004-09
Average	2.69	2.66	2.69	2.72	2.73	2.70	2.73

Source: SDCCD Information System

Mesa College Section III: Student Outcomes (Annual GPA)

Annual GPA by Gender: Between 2004/05 and 2008/09, male students, on average, had lower annual GPA than their female student counterpart (2.60 and 2.79, respectively). The average annual GPA of female students at Mesa College was higher compared to the average annual GPA of the female student population of all colleges in the district (2.76), while the average annual GPA of male students at Mesa College was lower compared to the average annual GPA of the male student population of all colleges in the district (2.70). The average annual GPA of the female student population at Mesa was higher than the average annual GPA of both the general student populations at Mesa College (2.70) and all colleges in the district (2.73). The average annual GPA of male students at Mesa College fell below the same averages.

Figure 3.10. Mesa College Annual GPA by Gender

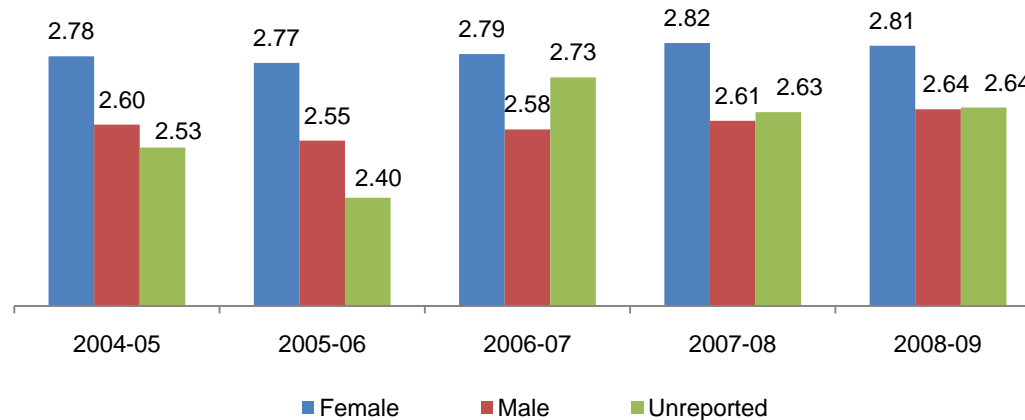


Table 3.10. Mesa College Annual GPA by Gender

	2004-05	2005-06	2006-07	2007-08	2008-09	College Average 2004-09	All Colleges Average 2004-09
Female	2.78	2.77	2.79	2.82	2.81	2.79	2.76
Male	2.60	2.55	2.58	2.61	2.64	2.60	2.70
Unreported	2.53	2.40	2.73	2.63	2.64	2.56	2.80
Average	2.69	2.66	2.69	2.72	2.73	2.70	2.73

Source: SDCCD Information System

Mesa College Section III: Student Outcomes (Annual GPA)

Annual GPA by Ethnicity: Both White students (2.83) and Asian/Pacific Islander students (2.78) had the highest GPA, on average, between 2004/05 and 2008/09. The average annual GPA of African American, American Indian, Filipino, and Latino students fell below the average annual GPA of both the general student populations at Mesa College and all colleges in the district (2.70 and 2.73, respectively), while the average annual GPA of Asian/Pacific Islander and White students exceeded the same averages. Asian/Pacific Islander students showed an upward trend in annual GPA, from 2.71 in 2004/05 to 2.86 in 2008/09.

Figure 3.11. Mesa College Annual GPA by Ethnicity

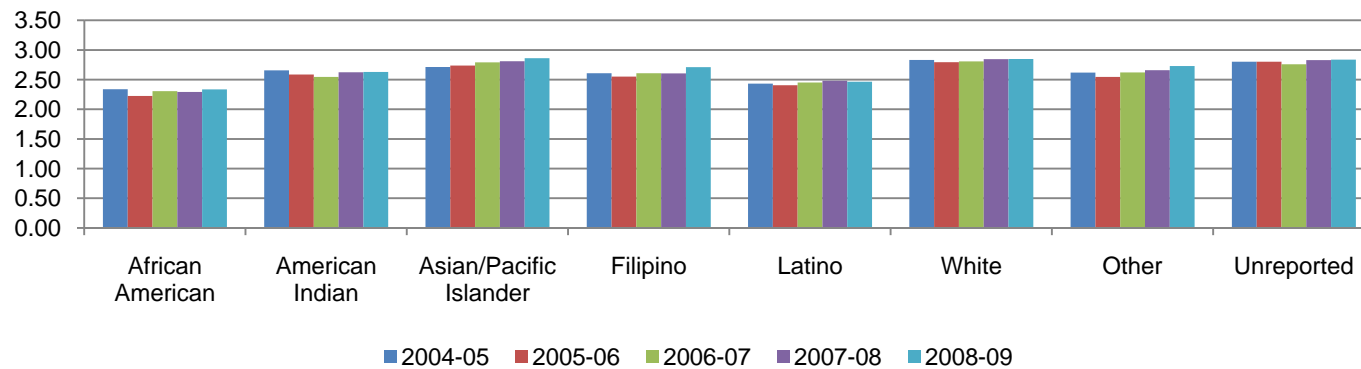


Table 3.11. Mesa College Annual GPA by Ethnicity

	2004-05	2005-06	2006-07	2007-08	2008-09	College Average 04/05-08/09	All Colleges Average 04/05-08/09
African American	2.34	2.23	2.31	2.29	2.34	2.30	2.32
American Indian	2.66	2.59	2.55	2.62	2.63	2.61	2.64
Asian/Pacific Islander	2.71	2.74	2.79	2.81	2.86	2.78	2.82
Filipino	2.61	2.55	2.61	2.61	2.71	2.62	2.65
Latino	2.43	2.40	2.45	2.48	2.46	2.45	2.50
White	2.83	2.79	2.81	2.84	2.85	2.83	2.92
Other	2.62	2.55	2.62	2.66	2.73	2.64	2.62
Unreported	2.80	2.80	2.76	2.83	2.84	2.81	2.86
Average	2.69	2.66	2.69	2.72	2.73	2.70	2.73

Source: SDCCD Information System

Mesa College Section III: Student Outcomes (Annual GPA)

Annual GPA by Age: With the exception of students who were under age 18, a general trend between 2004/05 and 2008/09 showed that as age increased so did GPA. The average annual GPA of students who were between ages 18-24 (2.55) fell below the average annual GPA of both the general student populations at Mesa College and all colleges in the district (2.70 and 2.73, respectively). The average annual GPA of all other age groups exceeded the same averages. For students between ages 40 and 49, there was an upward trend in annual GPA, from 3.12 in 2004/05 to 3.17 in 2007/08.

Figure 3.12. Mesa College Annual GPA by Age

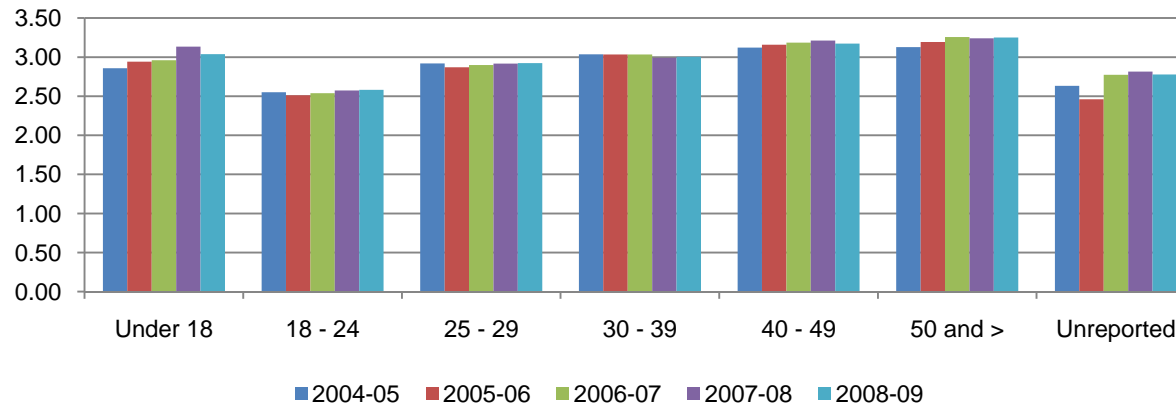


Table 3.12. Mesa College Annual GPA by Age

	2004-05	2005-06	2006-07	2007-08	2008-09	College Average 04/05-08/09	All Colleges Average 04/05-08/09
Under 18	2.86	2.94	2.96	3.13	3.04	3.01	2.94
18 - 24	2.55	2.51	2.54	2.57	2.58	2.55	2.54
25 - 29	2.92	2.87	2.90	2.92	2.92	2.91	2.92
30 - 39	3.04	3.03	3.03	2.99	3.01	3.02	3.05
40 - 49	3.12	3.16	3.19	3.21	3.17	3.17	3.16
50 and >	3.13	3.19	3.26	3.24	3.25	3.21	3.17
Unreported	2.63	2.46	2.77	2.81	2.78	2.66	2.94
Average	2.69	2.66	2.69	2.72	2.73	2.70	2.73

Source: SDCCD Information System

Mesa College Section III: Student Outcomes (Annual Awards Conferred)

Annual Awards Conferred: Overall, the trends for the type of awards conferred showed relatively large fluctuations between 2004/05 and 2007/08. On average, 77% of the total awards conferred at Mesa College were associate degrees. The number of certificates requiring 60 or more units showed the greatest increase of 360%, from 5 in 2004/05 to 23 in 2008/09. In contrast, the number of certificates that require 29 or fewer units decreased 35%, from 145 in 2004/05 to 94 in 2008/09 and showed the greatest disparity of awards conferred at Mesa College (9%) compared to all colleges in the district (18%). However, the number of associate degrees conferred at Mesa College, on average, was 10% higher than the number of associate degrees conferred within all colleges in the district.

Figure 3.13. Mesa College Overall Awards Conferred

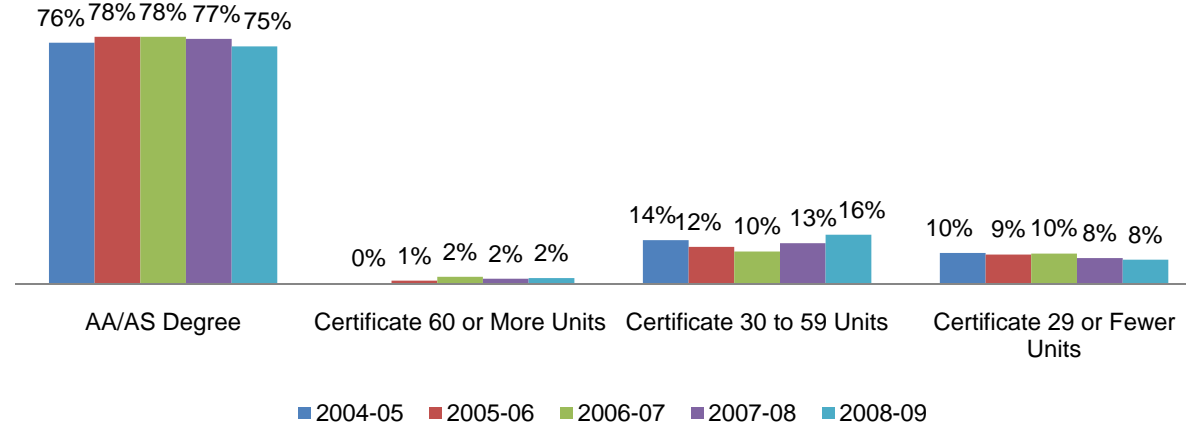


Table 3.13. Mesa College Overall Awards Conferred

	2004-05		2005-06		2006-07		2007-08		2008-09		% Change 04/05-08/09	College Average 04/05-08/09	All Colleges Average 04/05-08/09
AA/AS Degree	1,126	76%	1,146	78%	1,058	78%	1,003	77%	915	75%	-19%	77%	67%
Certificate 60 or More Units	5	0%	16	1%	31	2%	22	2%	23	2%	360%	1%	1%
Certificate 30 to 59 Units	205	14%	172	12%	139	10%	167	13%	190	16%	-7%	13%	14%
Certificate 29 or Fewer Units	145	10%	137	9%	130	10%	106	8%	94	8%	-35%	9%	18%
Total	1,481	100%	1,471	100%	1,358	100%	1,298	100%	1,222	100%	-17%	100%	100%

Source: SDCCD Information System

Mesa College Section III: Student Outcomes (Annual Awards Conferred)

Annual Awards Conferred by Gender: Of the total awards conferred at Mesa College, female students (58%) received more associate degrees, on average, than their male student (42%) counterpart between 2004/05 and 2008/09. For certificates requiring 60 or more units, both males and females showed an increased trend of 400% and 350%, respectively, between 2004/05 and 2008/09. This was in contrast to all the other types of awards conferred, which displayed a decreasing trend between 2004/05 and 2008/09. From 2004/05 to 2008/09, male students consistently earned a disproportionately low number of awards at Mesa College compared to male student population of all colleges in the district. Female students exhibited the opposite pattern.

Figure 3.14.1. Mesa College Annual AA/AS Degrees by Gender

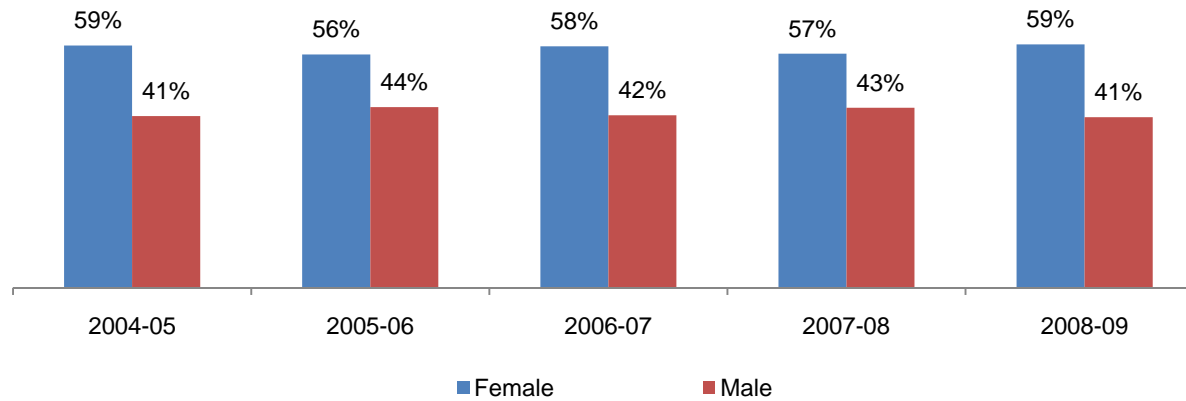
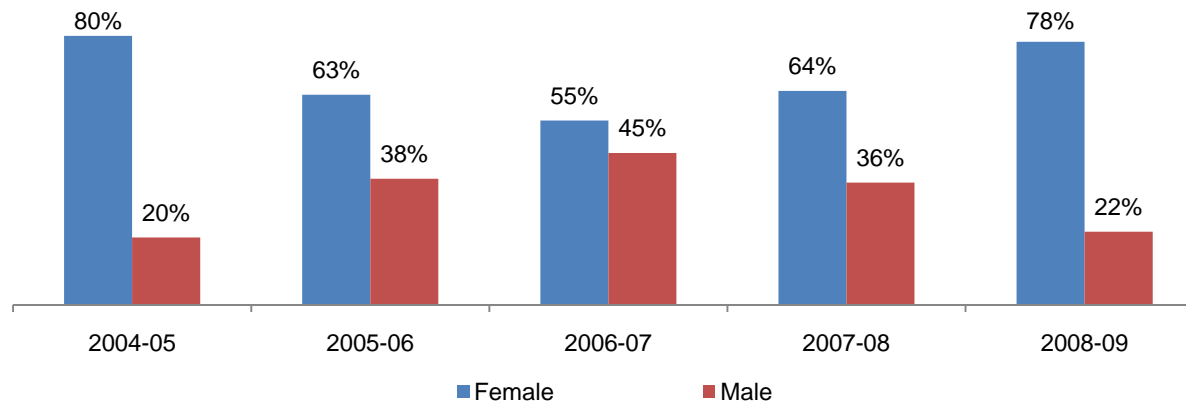


Figure 3.14.2. Mesa College Annual Certificates 60 or More Units by Gender



Mesa College Section III: Student Outcomes (Annual Awards Conferred)

Figure 3.14.3. Mesa College Annual Certificates 30 to 59 Units by Gender

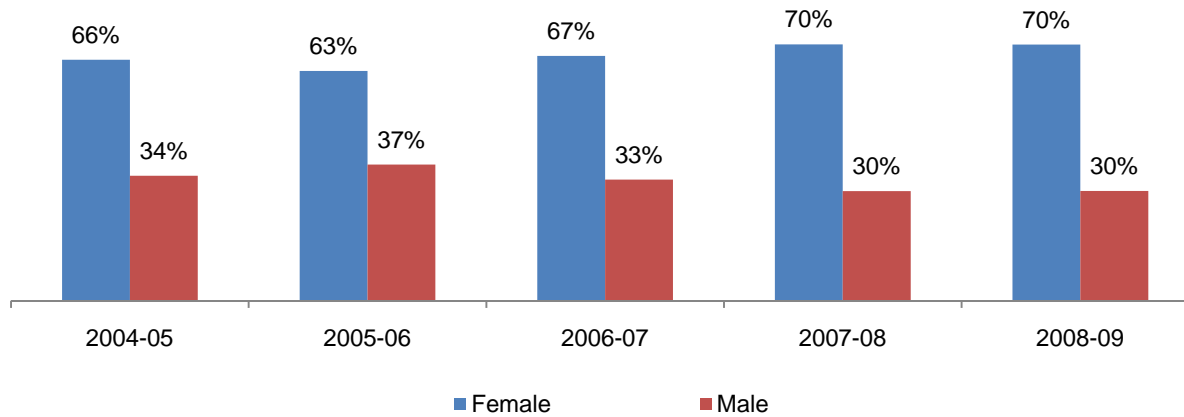
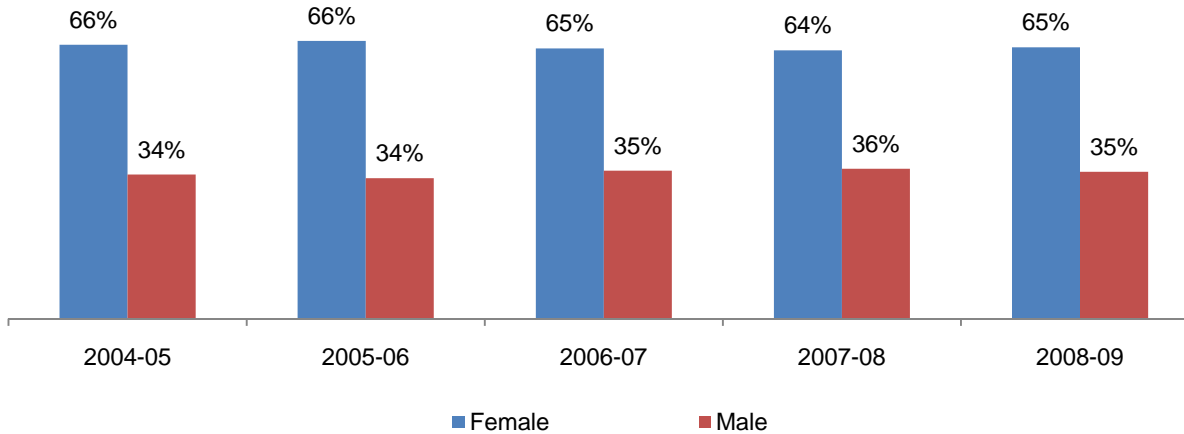


Figure 3.14.4. Mesa College Annual Certificates 29 or Fewer Units by Gender



Mesa College Section III: Student Outcomes (Annual Awards Conferred)

Table 3.14. Mesa College Awards by Gender

		2004-05		2005-06		2006-07		2007-08		2008-09		% Change 04/05-08/09	College Average 04/05-08/09	All Colleges Average 04/05-08/09
AA/AS Degree	Female	659	59%	646	56%	617	58%	567	57%	538	59%	-18%	58%	57%
	Male	467	41%	500	44%	441	42%	436	43%	377	41%	-19%	42%	43%
	Unreported	0	0%	0	0%	0	0%	0	0%	0	0%	0%	0%	0%
	Total	1,126	100%	1,146	100%	1,058	100%	1,003	100%	915	100%	-19%	100%	100%
Certificate 60 or More Units	Female	4	80%	10	63%	17	55%	14	64%	18	78%	350%	65%	63%
	Male	1	20%	6	38%	14	45%	8	36%	5	22%	400%	35%	37%
	Unreported	0	0%	0	0%	0	0%	0	0%	0	0%	0%	0%	0%
	Total	5	100%	16	100%	31	100%	22	100%	23	100%	360%	100%	100%
Certificate 30 to 59 Units	Female	135	66%	108	63%	93	67%	117	70%	133	70%	-1%	67%	50%
	Male	70	34%	64	37%	46	33%	50	30%	57	30%	-19%	33%	50%
	Unreported	0	0%	0	0%	0	0%	0	0%	0	0%	0%	0%	0%
	Total	205	100%	172	100%	139	100%	167	100%	190	100%	-7%	100%	100%
Certificate 29 or Fewer Units	Female	95	66%	91	66%	84	65%	68	64%	61	65%	-36%	65%	42%
	Male	50	34%	46	34%	46	35%	38	36%	33	35%	-34%	35%	58%
	Unreported	0	0%	0	0%	0	0%	0	0%	0	0%	0%	0%	0%
	Total	145	100%	137	100%	130	100%	106	100%	94	100%	-35%	100%	100%

Source: SDCCD Information System

Mesa College Section III: Student Outcomes (Annual Awards Conferred)

Annual Awards Conferred by Ethnicity: From 2004/05 to 2008/09, White students received the most awards across all award categories. Asian/Pacific Islander students and Latino students had the second highest number of associate degrees and certificates requiring 60 or more units conferred. These trends reflect the fact that these three ethnicities (White, Asian/Pacific Islander, and Latino students) constitute the greatest proportions of the student headcount population at Mesa College. With the exception of the certificates requiring 60 or more unit's category, Latino students at Mesa College were consistently underrepresented across all other types of awards conferred when compared to the Latino student population all colleges in the district, while Asian/Pacific Islander students were overrepresented compared to the Asian/Pacific Islander student population of all colleges in the district. For the most part, there was an overall decrease in the number of awards conferred across ethnicity.

Figure 3.15.1. Mesa College Annual AA/AS Degrees by Ethnicity

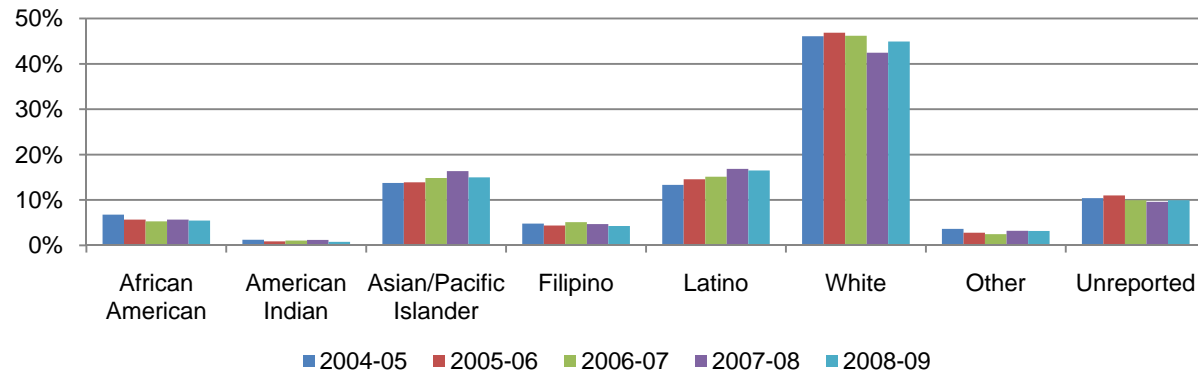
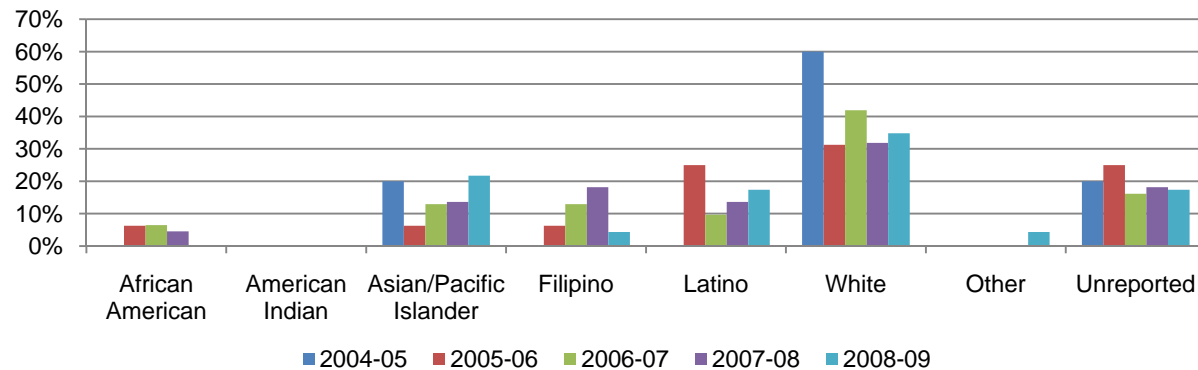


Figure 3.15.2. Mesa College Annual Certificates 60 or More Units by Ethnicity



Mesa College Section III: Student Outcomes (Annual Awards Conferred)

Figure 3.15.3. Mesa College Annual Certificates 30 to Less than 59 Units by Gender

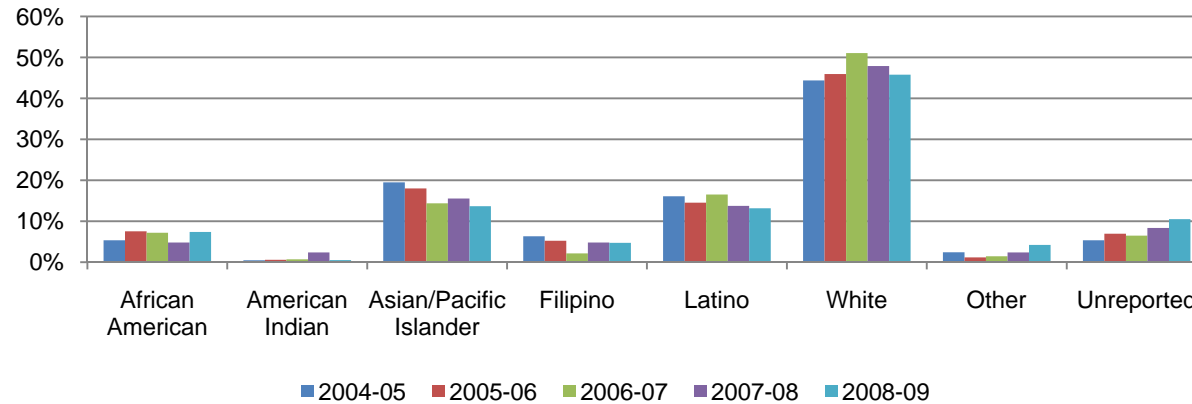
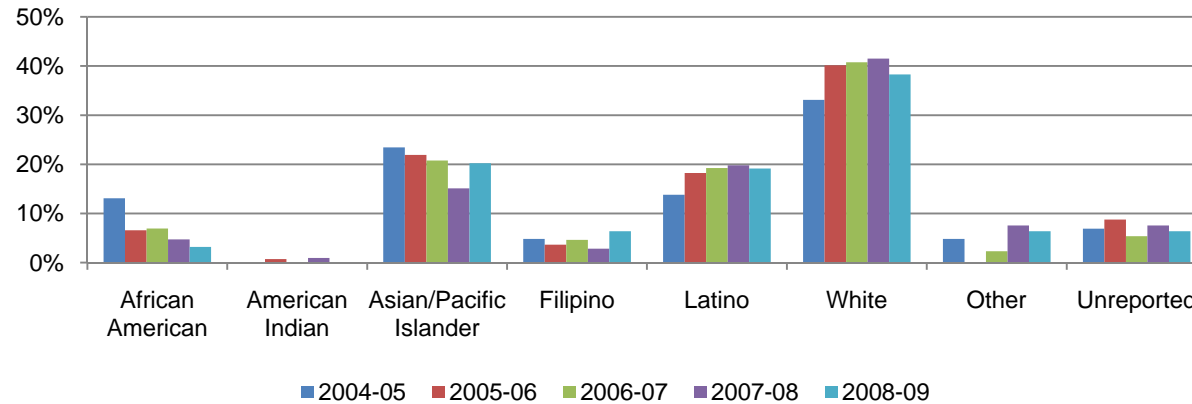


Figure 3.15.4. Mesa College Annual Certificates 29 or Fewer Units by Gender



Mesa College Section III: Student Outcomes (Annual Awards Conferred)

Table 3.15. Mesa College Awards by Ethnicity

		2004-05		2005-06		2006-07		2007-08		2008-09		% Change 04/05-08/09	College Average 04/05-08/09	All Colleges Average 04/05-08/09
AA/AS Degree	African American	76	7%	65	6%	56	5%	57	6%	50	5%	-34%	6%	9%
	American Indian	14	1%	10	1%	11	1%	12	1%	7	1%	-50%	1%	1%
	Asian/Pacific Islander	155	14%	159	14%	157	15%	164	16%	137	15%	-12%	15%	7%
	Filipino	54	5%	50	4%	54	5%	47	5%	39	4%	-28%	5%	18%
	Latino	150	13%	167	15%	160	15%	169	17%	151	17%	1%	15%	40%
	White	519	46%	537	47%	489	46%	426	42%	411	45%	-21%	45%	40%
	Other	41	4%	32	3%	26	2%	32	3%	29	3%	-29%	3%	4%
	Unreported	117	10%	126	11%	105	10%	96	10%	91	10%	-22%	10%	9%
	Total	1,126	100%	1,146	100%	1,058	100%	1,003	100%	915	100%	-19%	100%	100%
Certificate 60 or More Units	African American	0	0%	1	6%	2	6%	1	5%	0	0%	0%	4%	4%
	American Indian	0	0%	0	0%	0	0%	0	0%	0	0%	0%	0%	0%
	Asian/Pacific Islander	1	20%	1	6%	4	13%	3	14%	5	22%	400%	14%	14%
	Filipino	0	0%	1	6%	4	13%	4	18%	1	4%	0%	10%	10%
	Latino	0	0%	4	25%	3	10%	3	14%	4	17%	0%	14%	14%
	White	3	60%	5	31%	13	42%	7	32%	8	35%	167%	37%	40%
	Other	0	0%	0	0%	0	0%	0	0%	1	4%	0%	1%	1%
	Unreported	1	20%	4	25%	5	16%	4	18%	4	17%	300%	19%	18%
	Total	5	100%	16	100%	31	100%	22	100%	23	100%	360%	100%	100%

Source: SDCCD Information System

Mesa College Section III: Student Outcomes (Annual Awards Conferred)

Table 3.15. Mesa College Awards by Ethnicity (Continued)

		2004-05		2005-06		2006-07		2007-08		2008-09		% Change 04/05-08/09	College Average 04/05-08/09	All Colleges Average 04/05-08/09
Certificate 30 to 59 Units	African American	11	5%	13	8%	10	7%	8	5%	14	7%	27%	6%	8%
	American Indian	1	0%	1	1%	1	1%	4	2%	1	1%	0%	1%	1%
	Asian/Pacific Islander	40	20%	31	18%	20	14%	26	16%	26	14%	-35%	16%	12%
	Filipino	13	6%	9	5%	3	2%	8	5%	9	5%	-31%	5%	5%
	Latino	33	16%	25	15%	23	17%	23	14%	25	13%	-24%	15%	18%
	White	91	44%	79	46%	71	51%	80	48%	87	46%	-4%	47%	45%
	Other	5	2%	2	1%	2	1%	4	2%	8	4%	60%	2%	3%
	Unreported	11	5%	12	7%	9	6%	14	8%	20	11%	82%	8%	8%
	Total	205	100%	172	100%	139	100%	167	100%	190	100%	-7%	100%	100%
Certificate 29 or Fewer Units	African American	19	13%	9	7%	9	7%	5	5%	3	3%	-84%	7%	8%
	American Indian	0	0%	1	1%	0	0%	1	1%	0	0%	0%	0%	1%
	Asian/Pacific Islander	34	23%	30	22%	27	21%	16	15%	19	20%	-44%	21%	13%
	Filipino	7	5%	5	4%	6	5%	3	3%	6	6%	-14%	4%	4%
	Latino	20	14%	25	18%	25	19%	21	20%	18	19%	-10%	18%	23%
	White	48	33%	55	40%	53	41%	44	42%	36	38%	-25%	39%	41%
	Other	7	5%	0	0%	3	2%	8	8%	6	6%	-14%	4%	4%
	Unreported	10	7%	12	9%	7	5%	8	8%	6	6%	-40%	7%	7%
	Total	145	100%	137	100%	130	100%	106	100%	94	100%	-35%	100%	100%

Source: SDCCD Information System

Mesa College Section III: Student Outcomes (Annual Awards Conferred)

Annual Awards Conferred by Age: Approximately three-quarters of the total number of associate degrees awarded between 2004/05 and 2008/09 were to students between ages 18-29 years old. Students between ages 25 and 29 years old consistently displayed a trend of receiving approximately one-quarter of the awards within each award category. Students ages 18-24 were overrepresented in the number of associate degrees awarded at Mesa College when compared to the same age group of all colleges in the district. However, students ages 30-39 showed the greatest disparity in the number of associate degrees awarded at Mesa College between 2004/05 and 2008/09.

Figure 3.16.1. Mesa College Annual AA/AS Degrees by Age

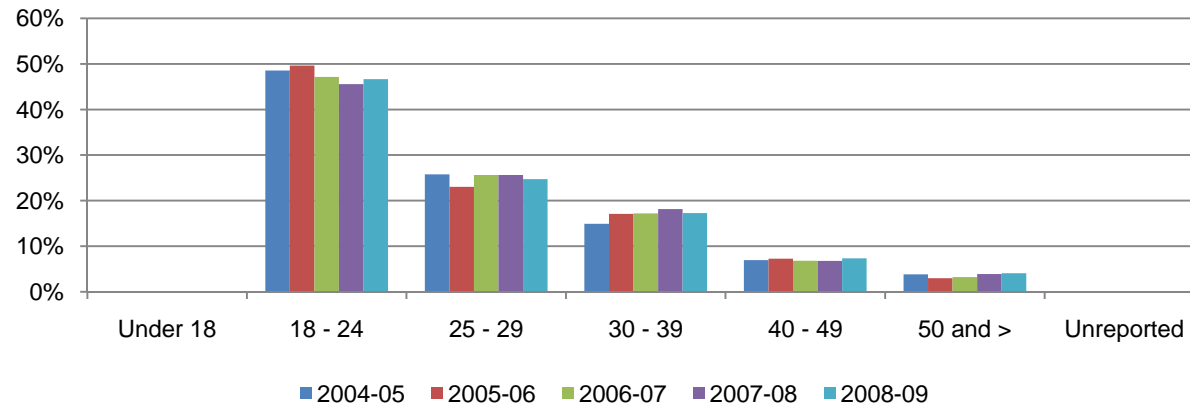
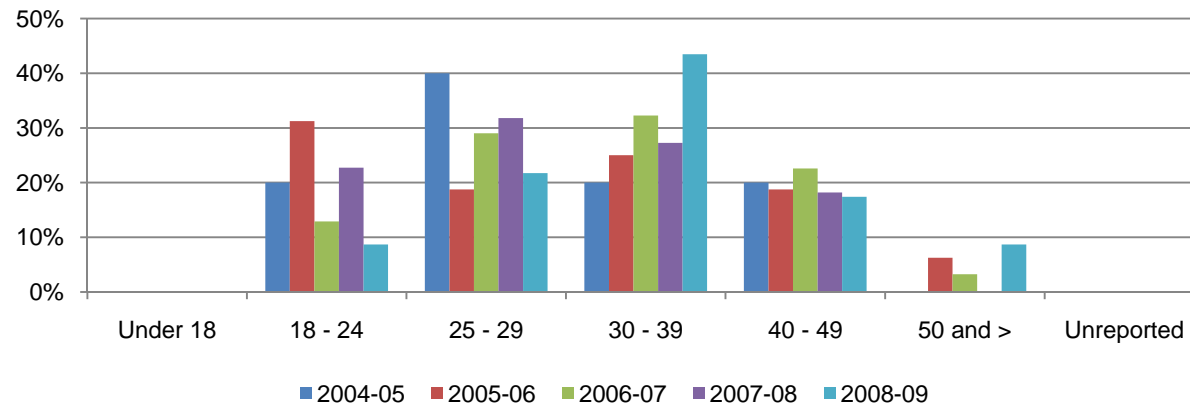


Figure 3.16.2. Mesa College Annual Certificates 60 or More Units by Age



Mesa College Section III: Student Outcomes (Annual Awards Conferred)

Figure 3.16.3. Mesa College Annual Certificates 30 to 59 Units by Age

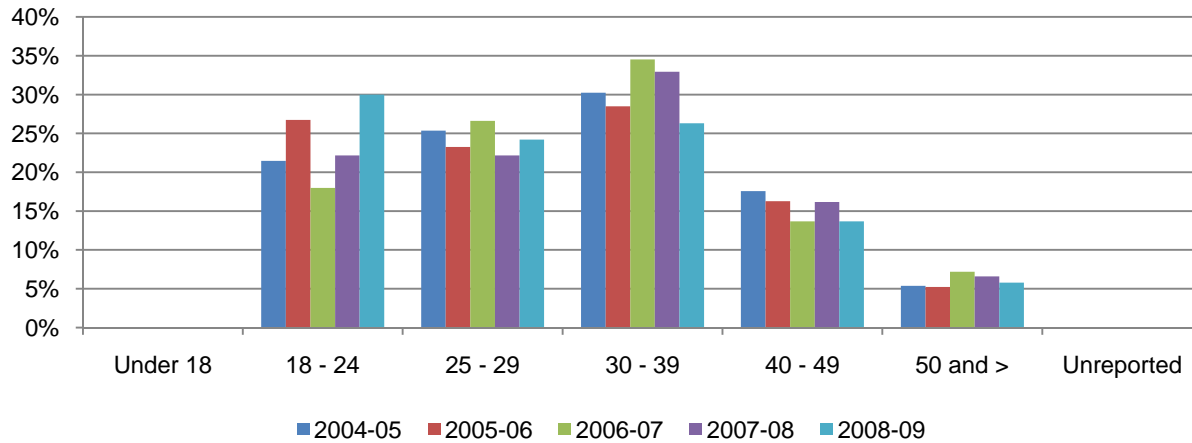
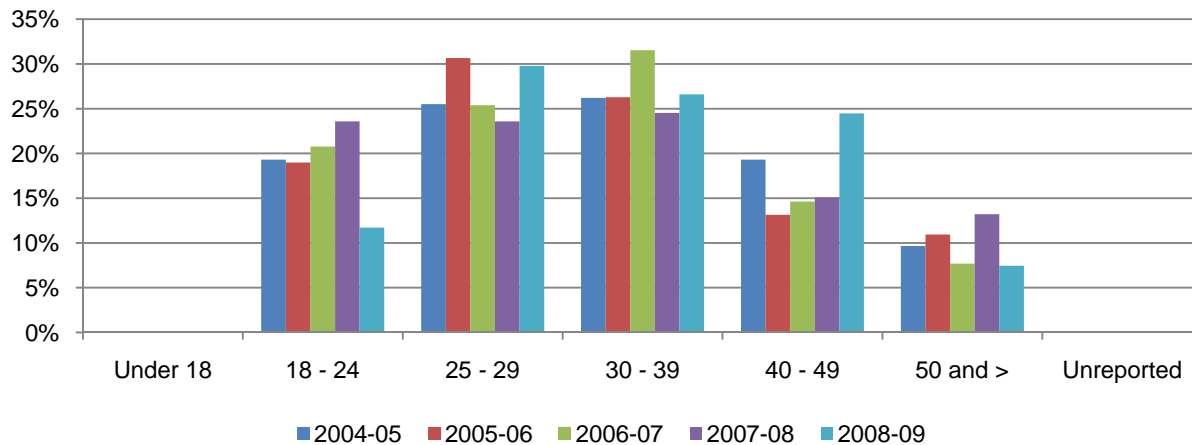


Figure 3.16.4. Mesa College Annual Certificates 29 or Fewer Units by Age



Mesa College Section III: Student Outcomes (Annual Awards Conferred)

Table 3.16. Mesa College Awards by Age

		2004-05		2005-06		2006-07		2007-08		2008-09		% Change 04/05-08/09	College Average 04/05-08/09	All Colleges Average 04/05-08/09
AA/AS Degree	Under 18	0	0%	0	0%	0	0%	0	0%	0	0%	0%	0%	0%
	18 - 24	547	49%	569	50%	499	47%	457	46%	427	47%	-22%	48%	40%
	25 - 29	290	26%	264	23%	271	26%	257	26%	226	25%	-22%	25%	26%
	30 - 39	168	15%	196	17%	182	17%	182	18%	158	17%	-6%	17%	20%
	40 - 49	78	7%	83	7%	72	7%	68	7%	67	7%	-14%	7%	10%
	50 and >	43	4%	34	3%	34	3%	39	4%	37	4%	-14%	4%	5%
	Unreported	0	0%	0	0%	0	0%	0	0%	0	0%	0%	0%	0%
	Total	1,126	100%	1,146	100%	1,058	100%	1,003	100%	915	100%	-19%	100%	100%
Certificate 60 or More Units	Under 18	0	0%	0	0%	0	0%	0	0%	0	0%	0%	0%	0%
	18 - 24	1	20%	5	31%	4	13%	5	23%	2	9%	100%	18%	18%
	25 - 29	2	40%	3	19%	9	29%	7	32%	5	22%	150%	27%	26%
	30 - 39	1	20%	4	25%	10	32%	6	27%	10	43%	900%	32%	33%
	40 - 49	1	20%	3	19%	7	23%	4	18%	4	17%	300%	20%	19%
	50 and >	0	0%	1	6%	1	3%	0	0%	2	9%	0%	4%	4%
	Unreported	0	0%	0	0%	0	0%	0	0%	0	0%	0%	0%	0%
	Total	5	100%	16	100%	31	100%	22	100%	23	100%	360%	100%	100%

Source: SDCCD Information System

Mesa College Section III: Student Outcomes (Annual Awards Conferred)

Table 3.16. Mesa College Awards by Age (Continued)

		2004-05		2005-06		2006-07		2007-08		2008-09		% Change 04/05-08/09	College Average 04/05-08/09	All Colleges Average 04/05-08/09
Certificate 30 to 59 Units	Under 18	0	0%	0	0%	0	0%	0	0%	0	0%	0%	0%	0%
	18 - 24	44	21%	46	27%	25	18%	37	22%	57	30%	30%	24%	19%
	25 - 29	52	25%	40	23%	37	27%	37	22%	46	24%	-12%	24%	22%
	30 - 39	62	30%	49	28%	48	35%	55	33%	50	26%	-19%	30%	29%
	40 - 49	36	18%	28	16%	19	14%	27	16%	26	14%	-28%	16%	20%
	50 and >	11	5%	9	5%	10	7%	11	7%	11	6%	0%	6%	10%
	Unreported	0	0%	0	0%	0	0%	0	0%	0	0%	0%	0%	0%
	Total	205	100%	172	100%	139	100%	167	100%	190	100%	-7%	100%	100%
Certificate 29 or Fewer Units	Under 18	0	0%	0	0%	0	0%	0	0%	0	0%	0%	0%	0%
	18 - 24	28	19%	26	19%	27	21%	25	24%	11	12%	-61%	19%	22%
	25 - 29	37	26%	42	31%	33	25%	25	24%	28	30%	-24%	27%	25%
	30 - 39	38	26%	36	26%	41	32%	26	25%	25	27%	-34%	27%	28%
	40 - 49	28	19%	18	13%	19	15%	16	15%	23	24%	-18%	17%	17%
	50 and >	14	10%	15	11%	10	8%	14	13%	7	7%	-50%	10%	8%
	Unreported	0	0%	0	0%	0	0%	0	0%	0	0%	0%	0%	0%
	Total	145	100%	137	100%	130	100%	106	100%	94	100%	-35%	100%	100%

Source: SDCCD Information System

Mesa College Section III: Student Outcomes (Annual Transfer Volume)

Annual Transfer Volume: The annual transfer volume for Mesa College increased 20%, from 1,060 in 2004/05 to 1,267 in 2008/09.

Figure 3.17. Mesa College Overall Annual Transfers

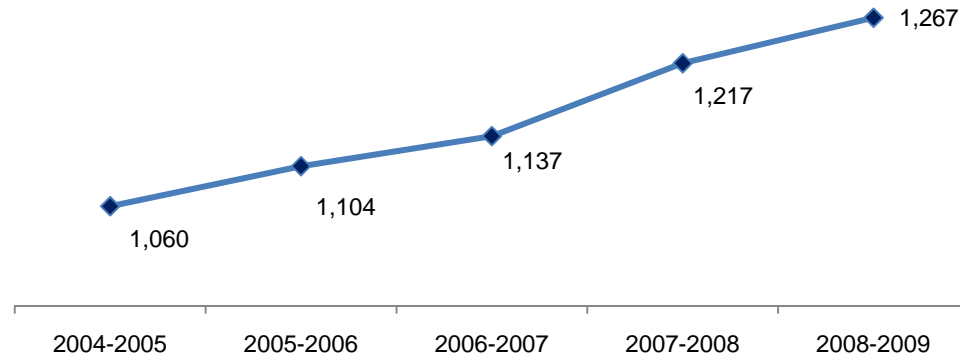


Table 3.17. Mesa College Overall Annual Transfers

	2004-05	2005-06	2006-07	2007-08	2008-09	% Change 04/05-08/09
Total	1,060	1,104	1,137	1,217	1,267	20%

Source: SDCCD Information System

Mesa College Section III: Student Outcomes (Annual Transfer Volume)

Annual Transfer Volume by Gender: Between 2004/05 and 2008/09, on average, of those who transferred from Mesa College, 51% were female students and 49% were male students. The transfer volume for both male and female students increased between 2004/05 and 2008/09 (24% and 15%, respectively).

Figure 3.18. Mesa College Annual Transfers by Gender

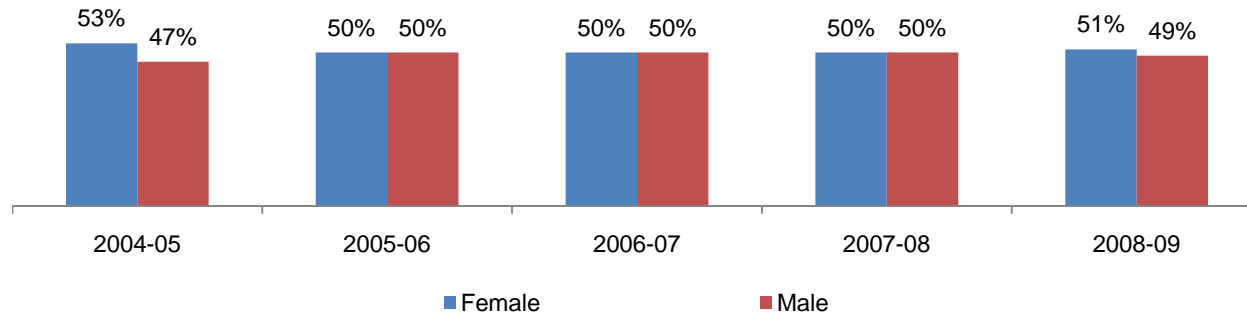


Figure 3.18. Mesa College Annual Transfers by Gender

	2004-05		2005-06		2006-07		2007-08		2008-09		% Change 04/05-08/09	College Average 04/05-08/09	All Colleges Average 04/05-08/09
Female	564	53%	548	50%	566	50%	608	50%	649	51%	15%	51%	52%
Male	496	47%	555	50%	571	50%	609	50%	617	49%	24%	49%	48%
Unreported	0	0%	1	0%	0	0%	0	0%	1	0%	0%	0%	0%
Total	1,060	100%	1,104	100%	1,137	100%	1,217	100%	1,267	100%	20%	100%	100%

Source: SDCCD Information System

Mesa College Section III: Student Outcomes (Annual Transfer Volume)

Annual Transfer Volume by Ethnicity: Of all the students who transferred from Mesa College, more than half were White students (54%) on average. Ethnic groups with the second and third highest transfer volumes were Asian/Pacific Islanders students (13%) and Latino students (12%) between 2004/05 and 2008/09. Most of the ethnic groups displayed an increased trend in transfer volume, with the exception of students categorized as 'Others' ethnicities, which displayed a 15% decrease. Latino students showed a 68% increase in transfer volume, from 93 in 2004/05 to 156 in 2008/09.

Figure 3.19. Mesa College Annual Transfers by Ethnicity

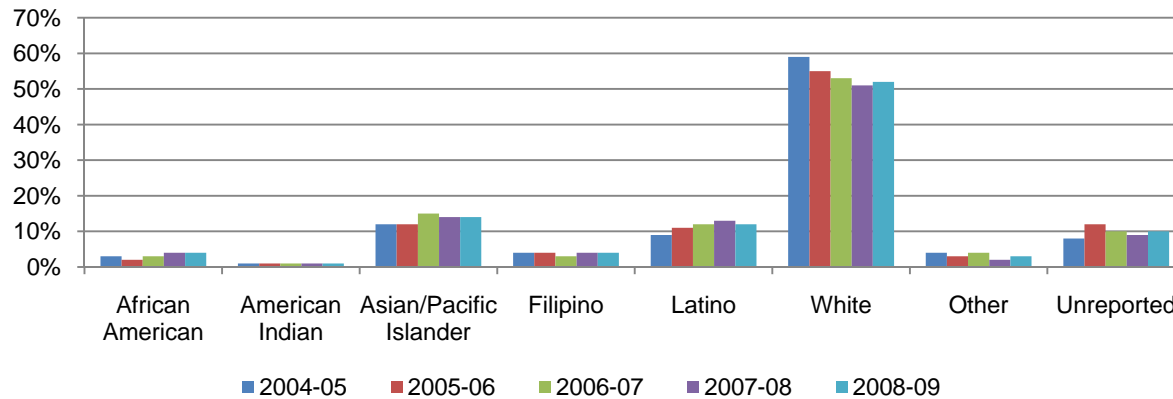


Table 3.19. Mesa College Annual Transfers by Ethnicity

	2004-05		2005-06		2006-07		2007-08		2008-09		% Change 04/05-08/09	College Average 04/05-08/09	All Colleges Average 04/05-08/09
	Count	%	Count	%	Count	%	Count	%	Count	%			
African American	32	3%	25	2%	34	3%	48	4%	47	4%	47%	3%	4%
American Indian	8	1%	10	1%	9	1%	15	1%	10	1%	25%	1%	1%
Asian/Pacific Islander	128	12%	129	12%	168	15%	175	14%	175	14%	37%	13%	13%
Filipino	42	4%	46	4%	37	3%	53	4%	50	4%	19%	4%	5%
Latino	93	9%	125	11%	132	12%	161	13%	156	12%	68%	12%	14%
White	626	59%	604	55%	599	53%	623	51%	662	52%	6%	54%	50%
Other	41	4%	32	3%	40	4%	27	2%	35	3%	-15%	3%	3%
Unreported	90	8%	133	12%	118	10%	115	9%	132	10%	47%	10%	10%
Total	1,060	100%	1,104	100%	1,137	100%	1,217	100%	1,267	100%	20%	100%	100%

Source: SDCCD Information System

Mesa College Section III: Student Outcomes (Annual Transfer Volume)

Annual Transfer Volume by Age: Of those who transferred from Mesa College, on average, the greatest proportions comprised students ages 18-24 (73%), students between ages 25 and 29 years old (20%), and students ages 30 to 39 years old (6%) between 2004/05 and 2008/09. Students who were 50 years and older displayed a 33% decrease in transfer volume, while students age 30-39 showed a 53% increase in transfer volume between 2004/05 and 2008/09.

Figure 3.20. Mesa College Annual Transfers by Age

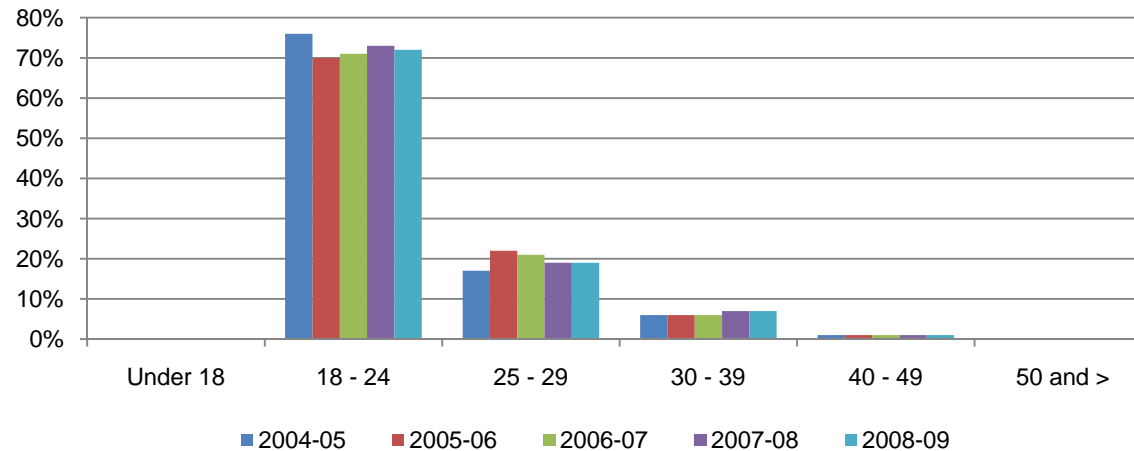


Table 3.20. Mesa College Annual Transfers by Age

	2004-05		2005-06		2006-07		2007-08		2008-09		% Change 04/05-08/09	College Average 04/05-08/09	All Colleges Average 04/05-08/09
	Count	%	Count	%	Count	%	Count	%	Count	%			
Under 18	0	0%	0	0%	1	0%	2	0%	0	0%	0%	0%	0%
18 - 24	802	76%	778	70%	811	71%	890	73%	916	72%	14%	73%	66%
25 - 29	183	17%	244	22%	244	21%	229	19%	243	19%	33%	20%	23%
30 - 39	60	6%	65	6%	69	6%	80	7%	92	7%	53%	6%	8%
40 - 49	12	1%	15	1%	11	1%	12	1%	14	1%	17%	1%	2%
50 and >	3	0%	2	0%	1	0%	4	0%	2	0%	-33%	0%	0%
Unreported	0	0%	0	0%	0	0%	0	0%	0	0%	0%	0%	0%
Total	1,060	100%	1,104	100%	1,137	100%	1,217	100%	1,267	100%	20%	100%	100%

Source: SDCCD Information System

Mesa College Section III: Student Outcomes (Annual Transfer Volume)

Annual Transfer Volume by CSU-UC/Private (In-State)/Out-of-State: On average, nearly half of the Mesa College transfer volume were students who transferred into the California State University system (CSU) (48%), followed by the University of California system (UC) (24%), Out-of-State institutions (18%), and In-State private institutions (10%). Students who transferred from Mesa College to any In-State private institution increased 120% in transfer volume, from 79 in 2004/05 to 174 in 2008/09.

Figure 3.21. Mesa College Annual Transfers by CSU-UC/Private (In-state)/Out-of-State

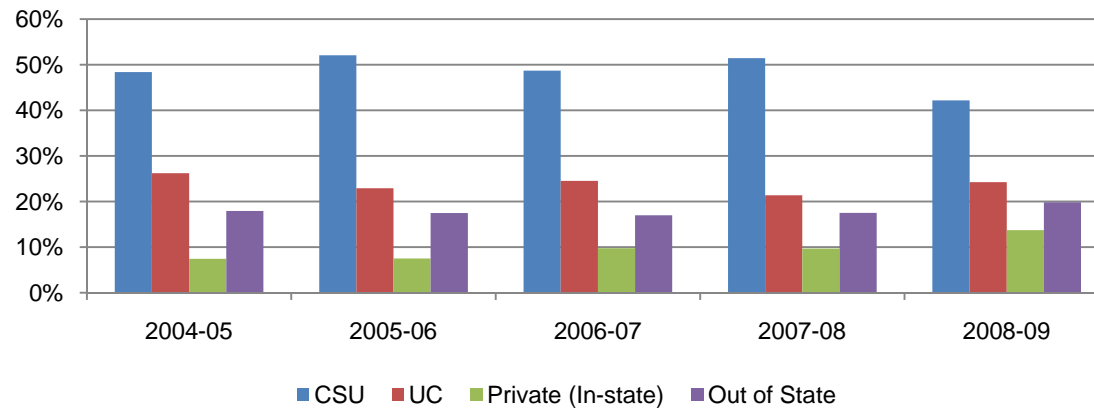


Table 3.21. Mesa College Annual Transfers by CSU-UC/Private (In-state)/Out-of-State

	2004-05		2005-06		2006-07		2007-08		2008-09		% Change 04/05-08/09	College Average 04/05-08/09	All Colleges Average 04/05-08/09
CSU	513	48%	575	52%	554	49%	626	51%	534	42%	4%	48%	48%
UC	278	26%	253	23%	279	25%	260	21%	307	24%	10%	24%	22%
Private (In-State)	79	7%	83	8%	111	10%	118	10%	174	14%	120%	10%	10%
Out-of-State	190	18%	193	17%	193	17%	213	18%	251	20%	32%	18%	20%
Total	1,060	100%	1,104	100%	1,137	100%	1,217	100%	1,267	100%	20%	100%	100%

Source: SDCCD Information System

Note: Out-of-State included both public and private 4-year institutions.

Mesa College Section III: Student Outcomes (Annual Transfer Volume)

Annual Transfer Volume by CSU/UC: Of the total Mesa College transfer volume (see Table 3.13), 72% transferred into either the California State University (CSU) or University of California (UC) systems on average (48% and 24%, respectively). Of the total number of students who transferred to CSU or UC systems, the majority of students went to CSU (67%) and one-third went to UC (33%) on average. Both the CSU and UC systems showed an increased trend in the number of students who transferred from Mesa College (4% and 10%, respectively) to their respective systems between 2004/05 and 2008/09.

Figure 3.22. Mesa College Annual Transfers by CSU/UC

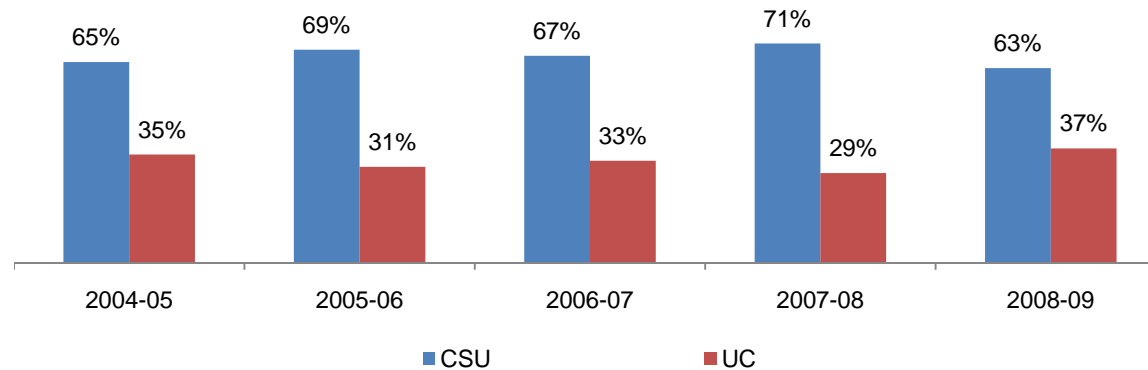


Table 3.22. Mesa College Annual Transfers by CSU/UC

	2004-05		2005-06		2006-07		2007-08		2008-09		% Change 04/05-08/09	College Average 04/05-08/09	All Colleges Average 04/05-08/09
CSU	513	65%	575	69%	554	67%	626	71%	534	63%	4%	67%	68%
UC	278	35%	253	31%	279	33%	260	29%	307	37%	10%	33%	32%
Total	791	100%	828	100%	833	100%	886	100%	841	100%	6%	100%	100%

Source: SDCCD Information System

Mesa College Section III: Student Outcomes (Annual Transfer Volume)

Annual Transfer Volume by Institution Type: Of those who transferred from Mesa College, 18% transferred to a private institution and 82% transferred to a public institution on average. Both public and private institutions displayed an increased trend in the number of students who transferred from Mesa College (7% and 95%, respectively) to their respective institutions between 2004/05 and 2008/09.

Figure 3.23. Mesa College Annual Transfers by Institution Type

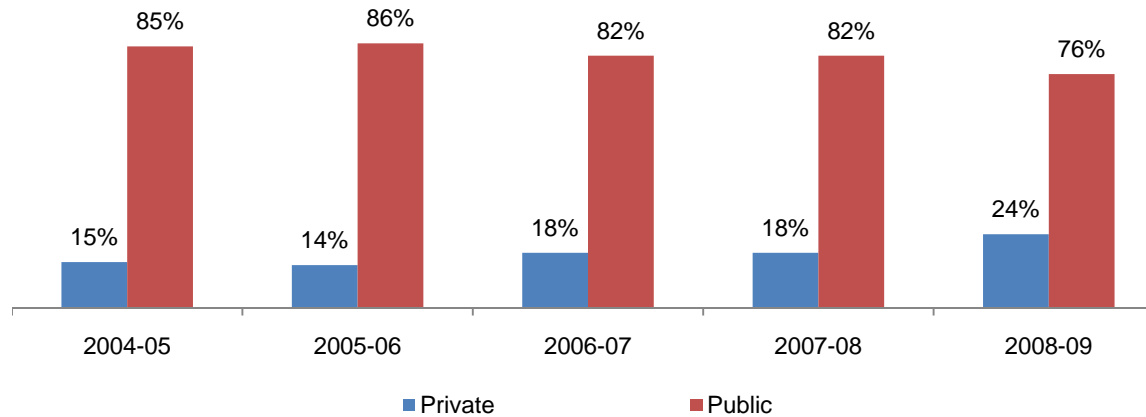


Table 3.23. Mesa College Annual Transfers by Institution Type

	2004-05		2005-06		2006-07		2007-08		2008-09		% Change 04/05-08/09	College Average 04/05-08/09	All Colleges Average 04/05-08/09
Private	156	15%	156	14%	200	18%	217	18%	304	24%	95%	18%	19%
Public	904	85%	948	86%	937	82%	1,000	82%	963	76%	7%	82%	81%
Total	1,060	100%	1,104	100%	1,137	100%	1,217	100%	1,267	100%	20%	100%	100%

Source: SDCCD Information System

Note: Public and private included both Out-of-State and In-State 4-year institutions.

Section IV
Productivity and Efficiency

Mesa College Section IV: Productivity and Efficiency

This section of the Fact Book contains information on productivity and efficiency measures. The following describes in detail each of the measures:

- 1) FTES. The first measure reported in this section is a measure of productivity. FTES is a calculation of full-time equivalent students enrolled as of official census and is based on the total number of student contact hours.
- 2) Enrollments. The second measure in this section of the report is also a measure of productivity. Enrollments are duplicated counts of students. The measure counts all of the classes in which a single student is enrolled compared to unduplicated headcount which counts the student only once regardless of the number of classes he/she may be enrolled in.
- 3) Fill Rates. The third measure reported in this section is a measure of efficiency. Fill rates are a calculation of the total enrollment capacity of a class over the total enrollments in the class.
- 4) Load. The fourth measure reported in this section is a measure of efficiency. Load is a calculation of the ratio of Weekly Student Contact Hours (WSCH) to Full-time Equivalent Faculty (WSCH/FTEF).

Mesa College Section IV: Productivity and Efficiency (FTES)

Annual FTES: Mesa College showed declining FTES between 2004/05 and 2006/07 and then a subsequent increase in 2007/08 and 2008/09. Between 2004/05 and 2008/09, there was a 1% decrease in FTES. For credit FTES, there was a 1% decrease, from 15,649 in 2004/05 to 15,533 in 2008/09. College non-credit FTES showed a 25% increase, from 53 in 2004/05 to 66 in 2008/09.

Figure 4.1. Mesa College Annual FTES

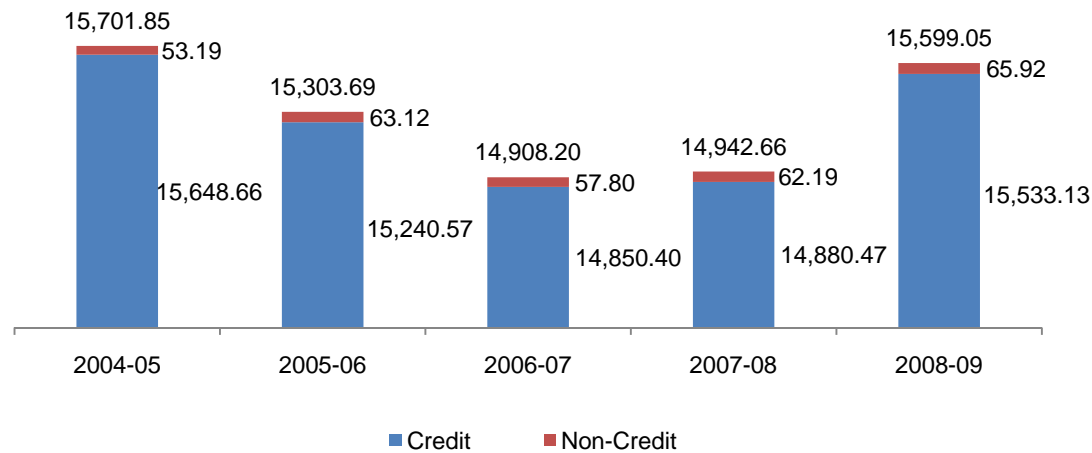


Table 4.1. Mesa College Annual FTES

	2004-05	2005-06	2006-07	2007-08	2008-09
Credit	15,648.66	15,240.57	14,850.40	14,880.47	15,533.13
Non-Credit	53.19	63.12	57.80	62.19	65.92
Total	15,701.85	15,303.69	14,908.20	14,942.66	15,599.05

Source: SDCCD Information System

Mesa College Section IV: Productivity and Efficiency (Enrollments)

Enrollments: The enrollment trend for the online mode of instruction increased tremendously for summer (372%), fall (204%), and spring (159%) terms between 2004/05 and 2008/09. However, the on campus mode of instruction enrollment trend consistently decreased for the summer (38%), fall (11%), and spring terms (7%) between 2004/05 and 2008/09. Both the online and on campus modes of instruction enrollment trends for all colleges in the district were consistent with both the online and on campus modes of instruction enrollment trends for Mesa College. The rate of change in enrollment trends for the general student population of all colleges in the district was higher compared to the rate of change in enrollment trends for the general student population of Mesa College across the summer, fall, and spring terms.

Figure 4.2.1. Mesa College Enrollments (Summer)

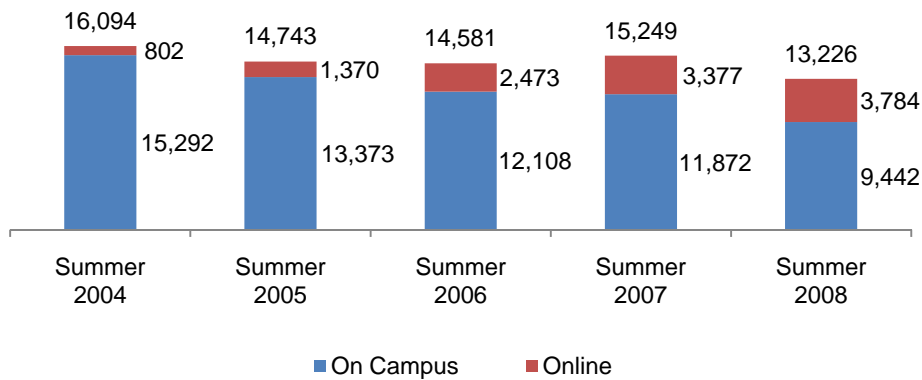


Figure 4.2.2. Mesa College Enrollments (Fall)

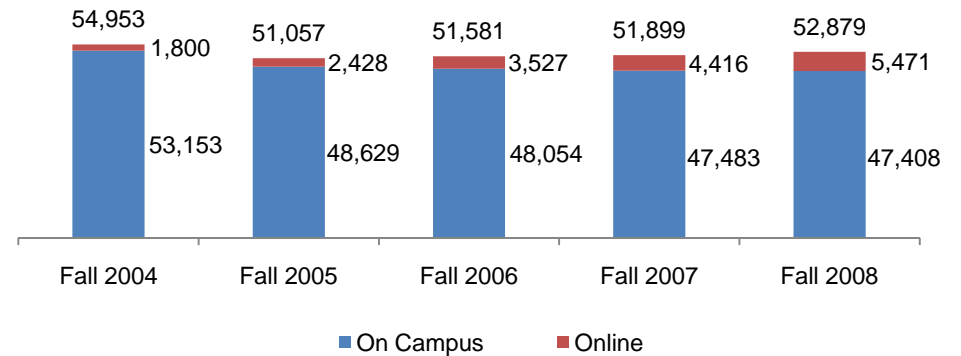
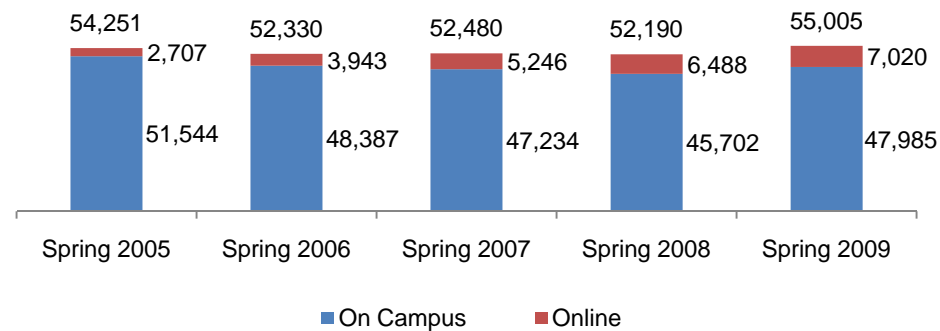


Figure 4.2.3. Mesa College Enrollments (Spring)



Mesa College Section IV: Productivity and Efficiency (Fill Rates)

Fill Rates: The overall fill rates for Mesa College were the highest in the fall term, on average, when compared to spring and summer terms (84% vs. 79% and 71%, respectively) between 2004/05 and 2008/09. Overall fill rates for all colleges in the district followed the same pattern. On average, fill rates for the on campus mode of instruction across summer, fall, and spring terms (70%, 84%, and 79%) varied compared to the online mode of instruction (summer 78%, fall 81%, and spring 79% terms). Mesa College had higher overall fill rates, on average, compared to the fill rates of all colleges in the district across all modes of instruction.

Figure 4.3.1. Mesa College Fill Rates (Summer)

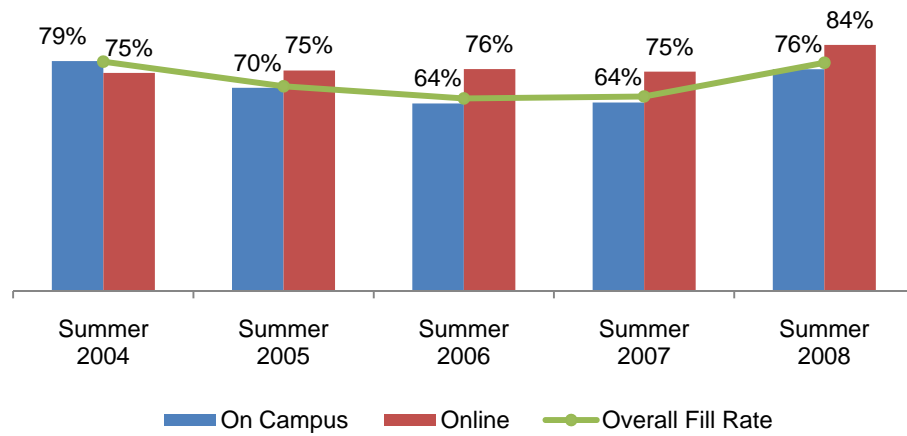


Figure 4.3.2. Mesa College Fill Rates (Fall)

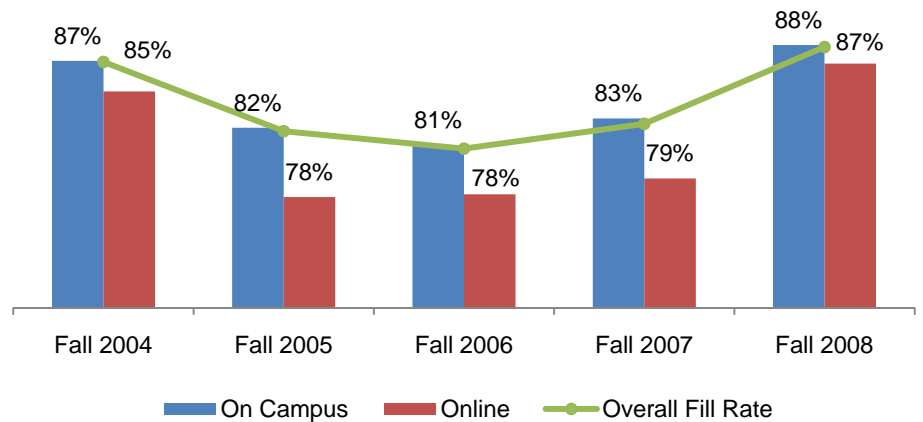
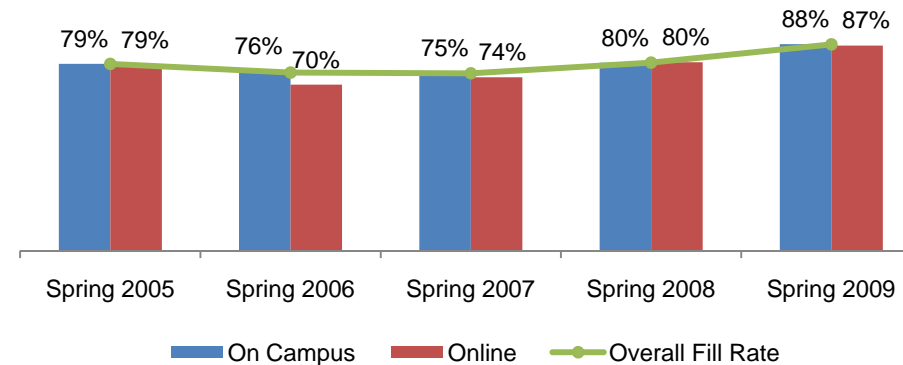


Figure 4.3.3. Mesa College Fill Rates (Spring)



Mesa College Section IV: Productivity and Efficiency (Enrollments and Fill Rates)

Table 4.2. Mesa College Enrollments and Fill Rates

Term	On Campus			Online			Campus Total			All Colleges Total		
	Enrollment	Capacity	Fill Rate	Enrollment	Capacity	Fill Rate	Enrollment	Capacity	Fill Rate	Enrollment	Capacity	Fill Rate
Summer 2004	15,292	19,443	79%	802	1,075	75%	16,094	20,518	78%	28,127	35,394	79%
Summer 2005	13,373	19,237	70%	1,370	1,817	75%	14,743	21,054	70%	29,046	41,844	69%
Summer 2006	12,108	18,877	64%	2,473	3,258	76%	14,581	22,135	66%	31,197	49,442	63%
Summer 2007	11,872	18,414	64%	3,377	4,501	75%	15,249	22,915	67%	34,065	52,335	65%
Summer 2008	9,442	12,450	76%	3,784	4,495	84%	13,226	16,945	78%	31,375	40,401	78%
Total & Average	62,087	88,421	70%	11,806	15,146	78%	73,893	103,567	71%	153,810	219,416	70%
Fall 2004	53,153	61,087	87%	1,800	2,120	85%	54,953	63,207	87%	104,531	127,010	82%
Fall 2005	48,629	59,014	82%	2,428	3,128	78%	51,057	62,142	82%	102,297	130,560	78%
Fall 2006	48,054	59,180	81%	3,527	4,533	78%	51,581	63,713	81%	105,509	139,987	75%
Fall 2007	47,483	57,182	83%	4,416	5,597	79%	51,899	62,779	83%	109,290	137,470	80%
Fall 2008	47,408	53,809	88%	5,471	6,301	87%	52,879	60,110	88%	111,704	130,364	86%
Total & Average	244,727	290,272	84%	17,642	21,679	81%	262,369	311,951	84%	533,331	665,391	80%
Spring 2005	51,544	65,034	79%	2,707	3,443	79%	54,251	68,477	79%	106,671	138,884	77%
Spring 2006	48,387	63,650	76%	3,943	5,595	70%	52,330	69,245	76%	106,516	146,708	73%
Spring 2007	47,234	62,606	75%	5,246	7,129	74%	52,480	69,735	75%	109,724	152,720	72%
Spring 2008	45,702	57,319	80%	6,488	8,116	80%	52,190	65,435	80%	111,009	139,620	80%
Spring 2009	47,985	54,784	88%	7,020	8,067	87%	55,005	62,851	88%	115,593	130,006	89%
Total & Average	240,852	303,393	79%	25,404	32,350	79%	266,256	335,743	79%	549,513	707,938	78%

Source: SDCCD Information System

Mesa College Section IV: Productivity and Efficiency (Load)

Course Load: The Load value for Fall 2008 was greater compared to the Load values of the previous four fall terms. Furthermore, the Load value for Spring 2009 was greater than the Load values of the previous four spring terms. The Mesa College Load values varied in comparison to the all colleges in the district Load values across the fall and spring terms. The statewide benchmark for Load is 525 for a 17.5 week semester. SDCCD has set an internal benchmark of 557, which is commensurate to its 16.5 week semester.

Figure 4.4.1. Mesa College Fall Load

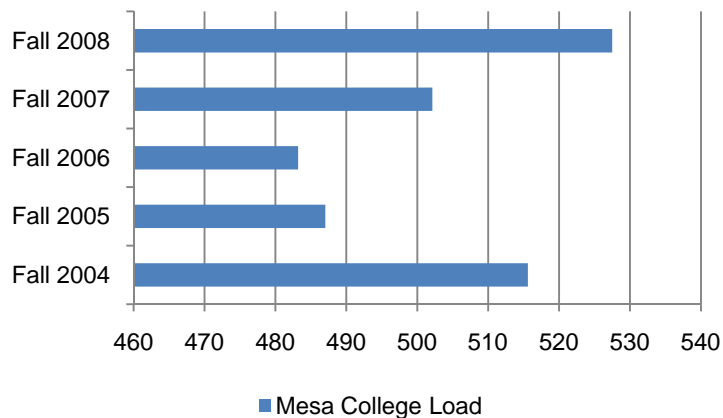


Figure 4.4.2. Mesa College Spring Load

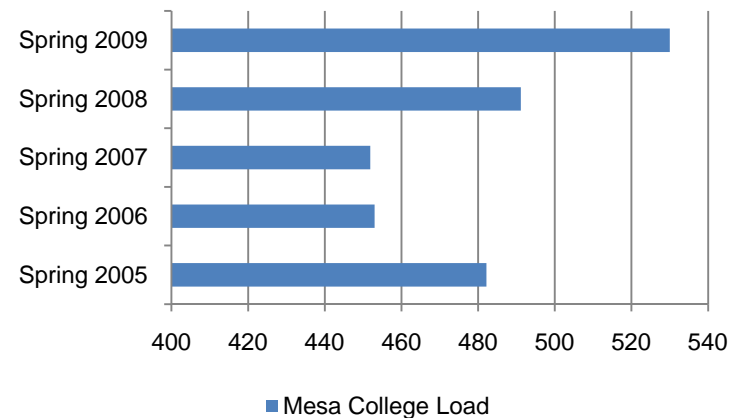


Table 4.4 Mesa College Load

Term	College Load	All Colleges Load
Fall 2004	516	527
Fall 2005	487	492
Fall 2006	483	481
Fall 2007	502	491
Fall 2008	527	527
Spring2005	482	491
Spring2006	453	461
Spring2007	452	452
Spring2008	491	490
Spring2009	530	538

Source: SDCCD Information System

Section V
Human Resources

Mesa College Section V: Human Resources

This section of the Fact Book contains information on the number and classification of employees during the Fall 2008 semester. The information is reported as follows:

- 1) Gender
- 2) Ethnicity
- 3) Employee Classification

Mesa College Section V: Human Resources

Fall 2008 Employees by Ethnicity: There were a total of 1,404 total employees working at Mesa College during Fall 2008. The ethnic breakdown showed that White employees comprised 58% of the total employee population, followed by Latino and Asian (12% each) employees, and African American employees comprising 7% of the Mesa College workforce. (see Figure 5.1.1). Among classified staff, White employees comprised nearly half of the employees (48%) and made up two-thirds of the teaching faculty positions (66%) compared to other ethnic groups (see Table 5.1). Although White employees generally constituted a higher percentage of the workforce at Mesa College, the trend decreased with management and supervisory positions. White employees comprised more than one-third (36%) of management positions. Both Latino and African American employees comprised 14% each of the management positions followed by Asians employees with 7%. Among supervisory staff positions, White employees comprised 39%, while Latino employees comprised 22%, followed by African American employees with 17%.

Asian/Pacific Islander, Filipino, and Latino employee populations (12%, 0%, and 12%, respectively) at Mesa College were underrepresented relative to the general Asian/Pacific Islander, Filipino, and Latino student populations (16%, 5%, and 20%, respectively) at Mesa College (see Figure 5.1.2). However, the White employee population (58%) at Mesa College was overrepresented relative to the general White student population (40%) at Mesa College. The employee populations of all other ethnic groups at Mesa College were comparable to the general student populations of all other ethnic groups at Mesa College.

Figure 5.1.1. Mesa College Fall 2008 Employees by Ethnicity

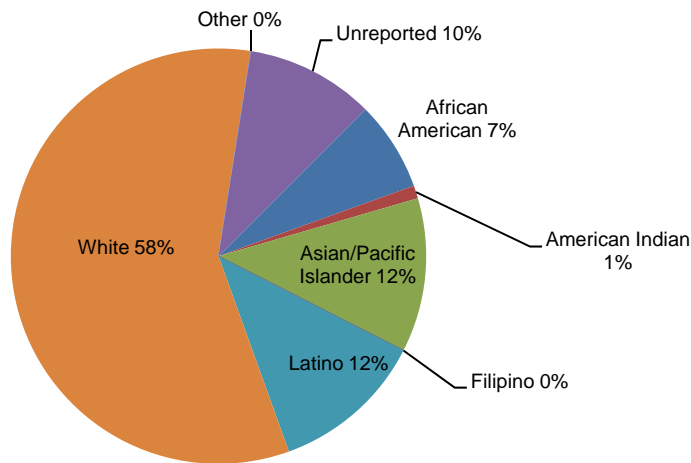
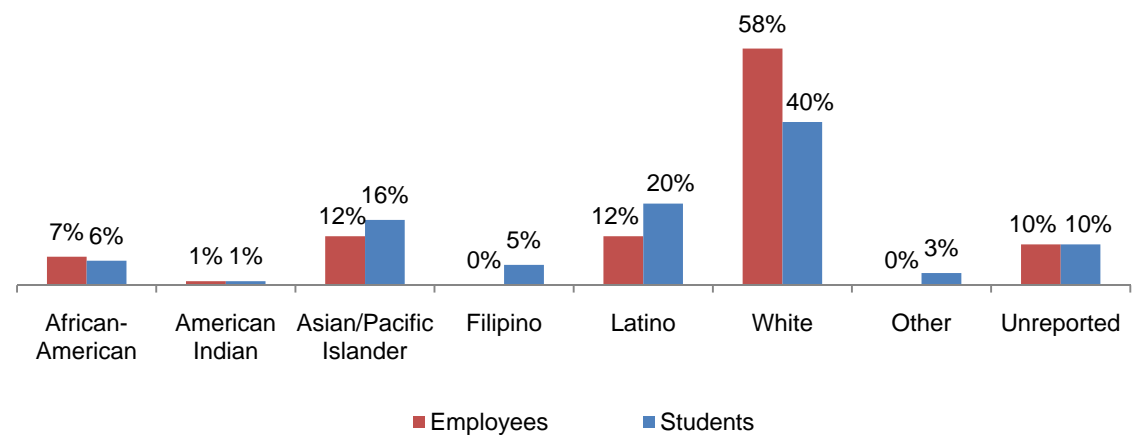


Figure 5.1.2. Mesa College Fall 2008 Employees compared to Students by Ethnicity



Mesa College Section V: Human Resources

Table 5.1. Mesa College Fall 2008 Employees by Ethnicity

	African American		American Indian		Asian		Filipino		Latino		White		Other		Unreported		Total
Total Employees	101	7%	8	1%	172	12%	6	<1%	163	12%	812	58%	3	<1%	139	10%	1,404
Male	49	8%	4	1%	62	10%	2	<1%	72	11%	389	60%	2	<1%	71	11%	651
Female	52	7%	4	1%	110	15%	4	1%	91	12%	423	56%	1	<1%	68	9%	753
Classified Staff	21	12%	-	-	20	12%	4	2%	31	18%	82	48%	1	1%	13	8%	172
Non-Academic Hourly	18	8%	3	1%	72	34%	-	-	25	12%	65	31%	-	-	29	14%	212
Teaching Faculty	49	6%	4	<1%	68	8%	-	-	86	10%	576	66%	2	<1%	84	10%	869
Contract	15	7%	2	1%	16	8%	-	-	25	12%	129	61%	1	<1%	24	11%	212
Adjunct	34	5%	2	<1%	52	8%	-	-	61	9%	447	68%	1	<1%	60	9%	657
Counseling Faculty	6	13%	1	2	5	11%	1	2%	9	20%	21	46%	-	-	3	7%	46
Contract	4	14%	-	-	4	14%	1	3%	6	21%	13	45%	-	-	1	3%	29
Adjunct	2	12%	1	6	1	6%	-	-	3	18%	8	47%	-	-	2	12%	17
Library Faculty	-	-	-	-	-	-	-	-	-	-	10	83%	-	-	2	17%	12
Contract	-	-	-	-	-	-	-	-	-	-	6	86%	-	-	1	14%	7
Adjunct	-	-	-	-	-	-	-	-	-	-	4	80%	-	-	1	20%	5
Police Officers	-	-	-	-	-	-	-	-	-	-	8	100%	-	-	-	-	8
Community Service Officers	-	-	-	-	-	-	-	-	2	29%	5	71%	-	-	-	-	7
Management	2	14%	-	-	1	7%	-	-	2	14%	5	36%	-	-	4	29%	14
Supervisory Staff	4	17%	-	-	2	9%	1	4%	5	22%	9	39%	-	-	2	9%	23

Source: SDCCD Information System

Table 5.2. Mesa College Employee by Gender and Job Status

Gender		Job Status	
Male	46%	Full-Time/Contract	34%
Female	54%	Hourly/Adjunct	66%

Source: SDCCD Information System

Section VI
Concluding Remarks

Mesa College Section VI: Concluding Remarks

Headcount. The number of unduplicated students or headcount at Mesa College showed continual increase overall during the five year period reported; 2004 to 2008. In particular, the spring headcount showed marked increase between Spring 2005 and Spring 2009 (4%). Moreover, the fall headcount showed a slight increase (1%), while the summer headcount showed a slight decrease (1%). The greatest increase was seen in the 2008/09 academic year. This increase is likely due in part to the downturned economy which frequently spawns renewed interest in retraining or retooling of skills or the learning of a new skill set.

Demographics. The student population remained majority female (54% on average) and generally young (75% on average were between 18-29 years old). In regards to ethnicity, the White student population was approximately twice as large (41%), on average, compared to the Latino and Asian/Pacific Islander student populations (18% and 16%, respectively). The fastest growing segment appeared to be the under 18 year old age group followed by the 50 years and older age group. The increase of the under 18 year old age group may be due to the increase of college classes offered at the high schools, while the increase in the 50 years and older age group may be due to the increase of this segmentation within the Continuing Education classes. Approximately one-third of the Mesa College student population lived outside the San Diego Community College District service area, which remained consistent over the five year reporting period.

Units Attempted by Units Earned. Students who enrolled in fewer units were more likely to complete the entire number of units attempted. On average, approximately two-thirds of those students who attempted between 0.1-5.9 units completed the attempted units, while one-third of the students completed zero of 0.1-5.9 units attempted. In contrast, less than half of those who attempted greater than 8.9 units completed the attempted units.

Persistence. A majority of the first-time credit college students who completed a fall term persisted and completed the subsequent spring term (64% on average) during the five years reported; 2004 to 2008. Female students persisted at a slightly higher rate than their male student counterpart (65% compared to 63%), while the average persistence rates by ethnicity ranged from 56% to 70%. A general trend showed that as age increased, term persistence decreased. In particular, younger first-time college credit students persisted at a higher rate than older students (67% for 18-24 years old compared to 41% for 40-49 years old), which is likely due to the fact that the younger students are generally degree or transfer seeking with a longer range education plan than the older students.

Student Outcomes: Success, Retention, and GPA. The average successful course completion rate for the Mesa College student population was 66%, the average retention rate was 82%, and the average GPA was 2.70. On average, female students had higher success and retention rates and GPA than their male student counterpart. Student ages 18-24 years old, on average, had moderately high retention rates but the lowest success rates and GPA (82%, 64%, and 2.55, respectively). Since this segment makes up more than half of the student population, further investigation into this disparity

Mesa College Section VI: Concluding Remarks

seems warranted so that clarification as to why this segment of the population underperforms in comparison to other age groups. Overall, Asian/Pacific Islander students had the highest success rate and GPA, while African American students had the lowest success and retention rates and GPA.

Student Outcomes: Awards Conferred. On average, 77% of the total awards conferred at Mesa College were associate degrees. Of the total awards conferred at Mesa College, female students received more associate degrees, on average, than their male student counterpart. From 2004/05 to 2008/09, White students received the most awards across all award categories. Asian/Pacific Islander students and Latino students had the second highest number of associate degrees and certificates requiring 60 or more units conferred. These trends reflect the fact that these three ethnicities (White, Asian/Pacific Islander, and Latino students) constitute the greatest proportions of the student headcount population at Mesa College. Approximately three-quarters of the total number of associate degrees awarded between 2004/05 and 2008/09 were to students between ages 18-29 years old.

Student Outcomes: Transfer Volume. On average, nearly half of the transfers were to the CSU system (48%) followed by UC (24%), Out-of-State institutions (18%), and finally In-State private institutions (10%). The number of students who transferred to a four-year university increased 20% between 2004/05 and 2008/09. The greatest increase was found among the 30-39 year old age group (53%). The Latino student population increased the most in transfer volume (68%), from 93 in 2004/05 to 156 in 2008/09, which may be a direct result of the cluster of classes or Learning Communities at the colleges that focus on student transfer goal.

Productivity and Efficiency. Duplicated headcounts/enrollments at Mesa College decreased by approximately 3% from 2004 to 2008. Similarly, FTES decreased 1% during this same reporting period. Both showed fluctuations each year with a particular surge in enrollment and FTES between 2007/08 and 2008/09. Fill rates also showed marked increases during this period (87% in 2008/09) and Load (WSCH/FTEF) was at an all time high in both Fall 2008 and Spring 2009 (527 and 530, respectively).

Human Resources. There were a total of 1,404 employees working at Mesa College during Fall 2008. The Asian/Pacific Islander, Filipino, and Latino employee populations (12%, 0%, and 12%, respectively) were underrepresented relative to the Asian/Pacific Islander, Filipino, and Latino student populations (16%, 5%, and 20%, respectively) that Mesa College serves. The White employee population (58%) at Mesa College was overrepresented relative to the White general student population (40%) by approximately one and one half times.