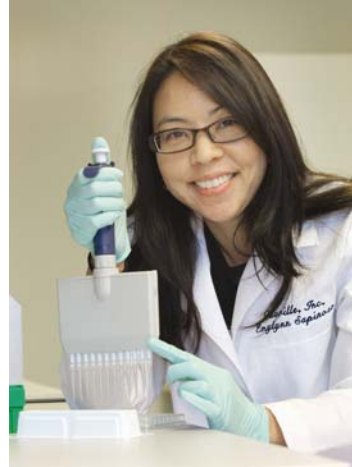


# Miramamar College Fact Book 2009



*Prepared by:*  
Office of Institutional Research and Planning  
September 2009

# Miramar College Fact Book 2009: Table of Contents

---

Fact Book Overview.....1

## Section I: Miramar College Headcount and Student

### Characteristics.....2

- Section Overview.....3
- Overall.....4
- Gender.....5
- Ethnicity .....67
- Age.....7
- Enrollment Status.....8
- Educational Objective.....9
- Primary Language.....11
- Prior Education Level.....12
- Service Area of Residence.....13
- Units Attempted by Units Earned.....14
- First Generation.....16
- Income Level.....17
- DSPS.....18
- EOPS.....19

## Section II. Fall to Spring Term Persistence Rates.....20

- Section Overview.....21
- Overall.....22
- By Gender.....23
- By Ethnicity .....24
- By Age.....26

## Section III. Student Outcomes.....28

- Section Overview.....29
- Annual Success Rates
  - Overall.....30

- By Gender.....31
- By Ethnicity .....32
- By Age.....33
- Annual Retention Rates
  - Overall.....34
  - By Gender.....35
  - By Ethnicity .....36
  - By Age.....37
- Annual GPA
  - Overall.....38
  - By Gender.....39
  - By Ethnicity .....40
  - By Age.....41
- Annual Awards Conferred
  - Overall.....42
  - By Gender.....43
  - By Ethnicity..... 46
  - By Age..... 50
- Annual Transfer
  - Overall.....54
  - By Gender.....55
  - By Ethnicity.....56
  - By Age.....57
  - CSU/UC/Private (In-state)/Out-of-State.....58
  - CSU/UC.....59
  - Institution Type (Private vs. Public).....60

## Section IV. Productivity and Efficiency.....61

- Section Overview.....62
- Annual FTES.....63
- Enrollments: Online and On Campus .....64

# Miramar College Fact Book 2009: Table of Contents

---

- Fill Rates.....65
- Load.....67

Section VI. Concluding Remarks.....72

## Section V. Human Resources.....68

- Section Overview.....69
- Fall 2008 Employees by Gender and Ethnicity.....70

## **Miramar College Fact Book 2009: Overview**

---

This Fact Book is a publication of the Office of Institutional Research and Planning for the San Diego Community College District. It is designed to serve the information needs of the college community with a primary focus on student enrollment, demographics, and outcomes.

The Fact Book is a rich source of collegewide trend information that may be used for planning and decision making. The book contains the following five sections:

- 1) **Headcount and Student Characteristics.** Provides information on student demographic characteristics (e.g., age, ethnicity, and educational objective) over five years.
- 2) **Term Persistence Rates.** Provides information about first-time to college students who complete a fall term and enroll in the subsequent spring term. The information is also reported by demographic characteristics of interest.
- 3) **Student Outcomes.** Provides information on students' successful course completion rates, retention rates, GPA, awards conferred, and transfer volume. All of the information is provided in summary form, as well demographic characteristics of interest.
- 4) **Productivity and Efficiency.** Provides information on annual FTES, enrollment and fill rates, and Load (WSCH/FTEF).
- 5) **Human Resources.** Provides information on the number of employees by ethnicity, gender, and employee classification.

Each section contains the following benchmarks: 1) The percentage change over the five year period being reported, 2) The collegewide average and 3) The "All Colleges" in the district averages (excludes Continuing Education).

**Section I**  
**Headcount and Student Characteristics**

## **Miramar College Section I: Headcount and Student Characteristics**

---

This section of the Fact Book contains student headcount by various student characteristics. The headcount figures are single student counts (unduplicated headcount) based on official census counts at the end of the semester (all students who dropped or never attended prior to the class census date were not included). The headcount information is reported over a period of five years to analyze trends and establish benchmarks.

Headcount information is reported by the following segments:

- 1) Overall
- 2) Gender
- 3) Ethnicity
- 4) Age
- 5) Educational Objective
- 6) Enrollment Status
- 7) Primary Language
- 8) Prior Education Level
- 9) Service Area of Residence
- 10) Units Attempted by Units Earned
- 11) First Generation
- 12) Income Level
- 13) DSPS
- 14) EOPS

## Miramar College Section I: Headcount and Student Characteristics

**Overall Headcount:** The unduplicated student headcount for Miramar College showed a 13% increase, from 10,553 in Fall 2004 to 11,930 in Fall 2008. In particular, there was a decline in the Miramar student headcount population in Fall 2006 and then a subsequent increase between Fall 2006 and Fall 2008. The unduplicated student headcount for Miramar College showed a 36% increase, from 5,012 in Summer 2004 to 6,813 Summer 2008. Finally, unduplicated student headcount for Miramar College showed a 6% increase between Spring 2005 and Spring 2009.

Figure 1.1. Miramar College Overall Headcount (Fall)

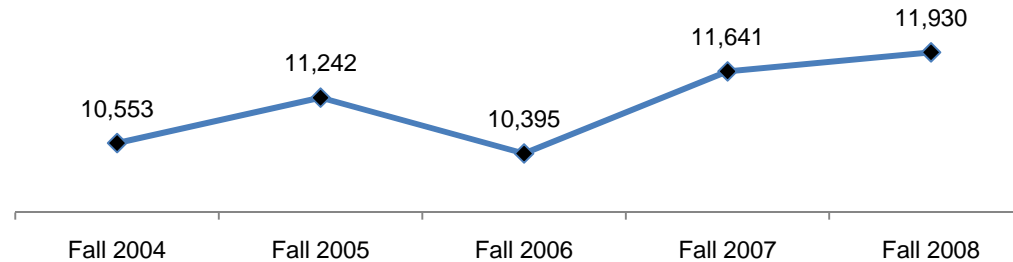


Table 1.1.1. Miramar College Overall Headcount (Fall)

	Fall 2004	Fall 2005	Fall 2006	Fall 2007	Fall 2008	% Change Fall 04-08
<b>Total</b>	<b>10,553</b>	<b>11,242</b>	<b>10,395</b>	<b>11,641</b>	<b>11,930</b>	<b>13%</b>

Source: SDCCD Information System

Table 1.1.2. Miramar College Overall Headcount (Summer)

	Summer 2004	Summer 2005	Summer 2006	Summer 2007	Summer 2008	% Change Summer 04-08
<b>Total</b>	<b>5,012</b>	<b>5,637</b>	<b>6,584</b>	<b>7,726</b>	<b>6,813</b>	<b>36%</b>

Source: SDCCD Information System

Table 1.1.3. Miramar College Overall Headcount (Spring)

	Spring 2005	Spring 2006	Spring 2007	Spring 2008	Spring 2009	% Change Spring 05-09
<b>Total</b>	<b>12,370</b>	<b>11,879</b>	<b>12,937</b>	<b>12,434</b>	<b>13,096</b>	<b>6%</b>

Source: SDCCD Information System

## Miramar College Section I: Headcount and Student Characteristics

**Headcount by Gender:** On average, the male student headcount (55%) was higher than their female student counterpart (45%), which remained consistent for the most part between Fall 2004 and Fall 2008. Both male and female student headcounts increased between Fall 2004 to Fall 2008, which paralleled the overall student population trend.

Figure 1.2. Miramar College Headcount by Gender

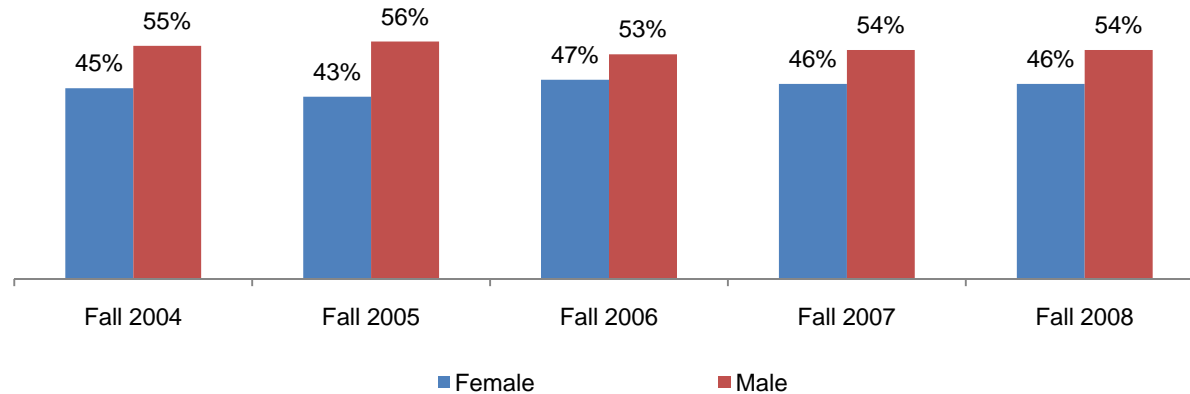


Table 1.2. Miramar College Headcount by Gender

	Fall 2004		Fall 2005		Fall 2006		Fall 2007		Fall 2008		% Change Fall 04-08	College Average Fall 04-08	All Colleges Average Fall 04-08
Female	4,704	45%	4,790	43%	4,838	47%	5,299	46%	5,453	46%	16%	45%	52%
Male	5,833	55%	6,284	56%	5,538	53%	6,329	54%	6,469	54%	11%	55%	48%
Unreported	16	0%	168	1%	19	0%	13	0%	8	0%	-50%	0%	0%
<b>Total</b>	<b>10,553</b>	<b>100%</b>	<b>11,242</b>	<b>100%</b>	<b>10,395</b>	<b>100%</b>	<b>11,641</b>	<b>100%</b>	<b>11,930</b>	<b>100%</b>	<b>13%</b>	<b>100%</b>	<b>100%</b>

Source: SDCCD Information System



## Miramar College Section I: Headcount and Student Characteristics

**Headcount by Ethnicity:** The ethnic groups that constituted the largest headcount between Fall 2004 and Fall 2008 were White students (41%), Asian/Pacific Islander students (15%), and Latino students (14%) on average. At Miramar College, the Latino student population increased 30% in contrast to the Filipino student population, which declined 4% between Fall 2004 and Fall 2008. Both the Latino and African American student population headcounts at Miramar College (14% and 5%, respectively) were underrepresented compared to the Latino and African American student population headcounts (22 and 8%, respectively) for all colleges in the district.

Figure 1.3. Miramar College Headcount by Ethnicity

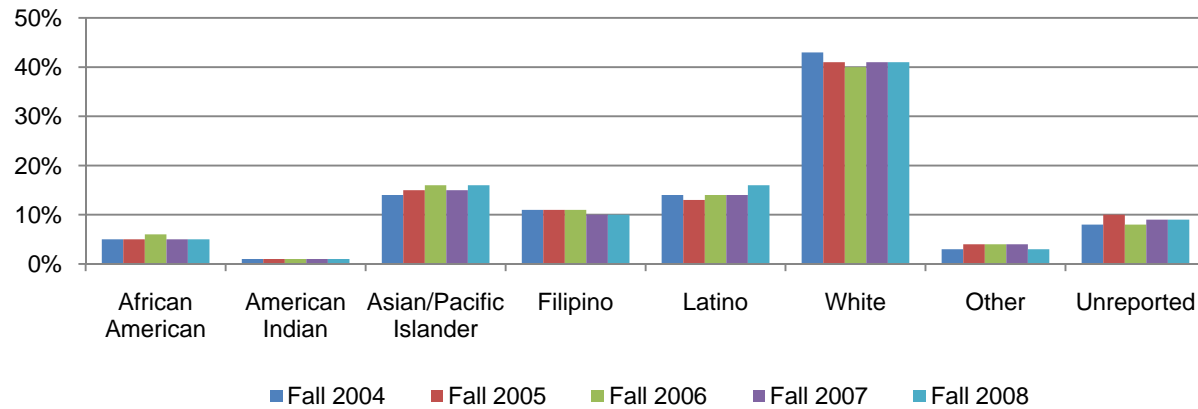


Table 1.3. Miramar College Headcount by Ethnicity

	Fall 2004		Fall 2005		Fall 2006		Fall 2007		Fall 2008		% Change Fall 04-08	College Average Fall 04-08	All Colleges Average Fall 04-08
	Headcount	%	Headcount	%	Headcount	%	Headcount	%	Headcount	%			
African-American	541	5%	595	5%	577	6%	612	5%	638	5%	18%	5%	8%
American Indian	107	1%	99	1%	90	1%	94	1%	104	1%	-3%	1%	1%
Asian/Pacific Islander	1,514	14%	1,652	15%	1,686	16%	1,787	15%	1,859	16%	23%	15%	13%
Filipino	1,199	11%	1,221	11%	1,181	11%	1,170	10%	1,151	10%	-4%	11%	6%
Latino	1,445	14%	1,510	13%	1,471	14%	1,621	14%	1,879	16%	30%	14%	22%
White	4,548	43%	4,661	41%	4,124	40%	4,828	41%	4,852	41%	7%	41%	38%
Other	362	3%	421	4%	401	4%	434	4%	409	3%	13%	4%	3%
Unreported	837	8%	1,083	10%	865	8%	1,095	9%	1,038	9%	24%	9%	9%
<b>Total</b>	<b>10,553</b>	<b>100%</b>	<b>11,242</b>	<b>100%</b>	<b>10,395</b>	<b>100%</b>	<b>11,641</b>	<b>100%</b>	<b>11,930</b>	<b>100%</b>	<b>13%</b>	<b>100%</b>	<b>100%</b>

Source: SDCCD Information System

## Miramar College Section I: Headcount and Student Characteristics

**Headcount by Age:** Students who were between ages 18-24, on average, constituted almost half of the Miramar student population (47%). Of the total Miramar student population, students under age 18 increased 211%, from 47 in Fall 2004 to 146 in Fall 2008. Most of the age groups exhibited an upward trend in student headcount, with the exception of students who are between ages 30 and 49 years old. Student headcount for those who were between ages 18-24 years old displayed the greatest disparity at Miramar College when compared to the student headcount of the same age group for all colleges in the district (47% and 53%, respectively).

Figure 1.4. Miramar College Headcount by Age

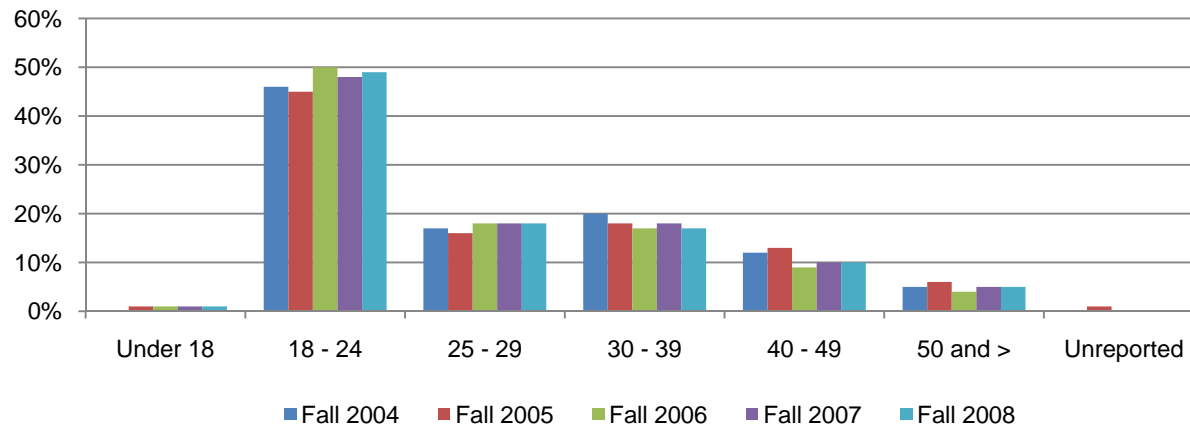


Table 1.4. Miramar College Headcount by Age

	Fall 2004		Fall 2005		Fall 2006		Fall 2007		Fall 2008		% Change Fall 04-08	College Average Fall 04-08	All Colleges Average Fall 04-08
	Headcount	%	Headcount	%	Headcount	%	Headcount	%	Headcount	%			
Under 18	47	0%	88	1%	109	1%	162	1%	146	1%	211%	1%	3%
18 - 24	4,813	46%	5,031	45%	5,201	50%	5,587	48%	5,808	49%	21%	47%	53%
25 - 29	1,810	17%	1,790	16%	1,858	18%	2,136	18%	2,183	18%	21%	18%	17%
30 - 39	2,111	20%	2,067	18%	1,816	17%	2,042	18%	2,001	17%	-5%	18%	15%
40 - 49	1,288	12%	1,445	13%	978	9%	1,165	10%	1,184	10%	-8%	11%	8%
50 and >	477	5%	667	6%	420	4%	543	5%	605	5%	27%	5%	5%
Unreported	7	0%	154	1%	13	0%	6	0%	3	0%	-57%	0%	0%
<b>Total</b>	<b>10,553</b>	<b>100%</b>	<b>11,242</b>	<b>100%</b>	<b>10,395</b>	<b>100%</b>	<b>11,641</b>	<b>100%</b>	<b>11,930</b>	<b>100%</b>	<b>13%</b>	<b>100%</b>	<b>100%</b>

Source: SDCCD Information System

## Miramar College Section I: Headcount and Student Characteristics

**Headcount by Enrollment Status:** On average, 65% of the student population were continuing students. Most of the enrollment status types showed an increase in headcount between Fall 2004 and Fall 2008. In particular, the number of returning transfer students who were enrolled at Miramar College increased 49%, from 497 in Fall 2004 to 741 in Fall 2008.

Figure 1.5. Miramar College Headcount by Enrollment Status

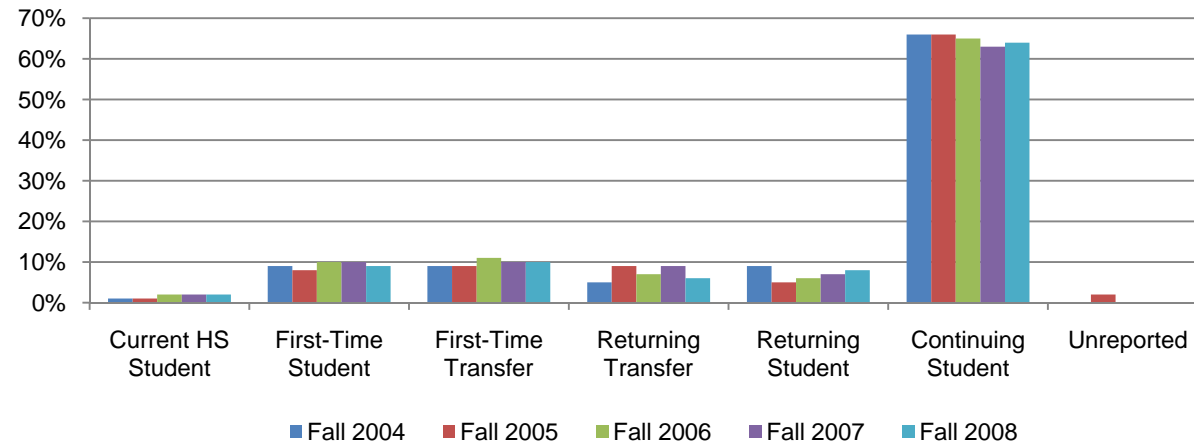


Table 1.5. Miramar College Headcount by Enrollment Status

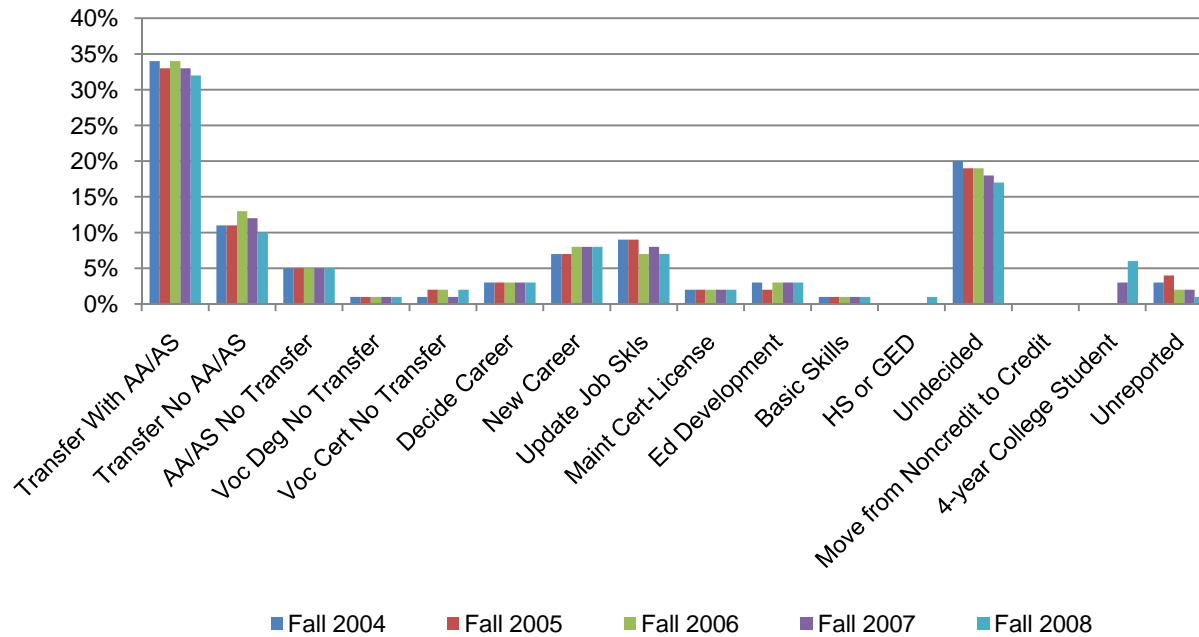
	Fall 2004		Fall 2005		Fall 2006		Fall 2007		Fall 2008		% Change Fall 04-08	College Average Fall 04-08	All Colleges Average Fall 04-08
Current HS Student	153	1%	150	1%	157	2%	222	2%	218	2%	42%	2%	4%
First-Time Student	936	9%	908	8%	988	10%	1,130	10%	1,130	9%	21%	9%	10%
First-Time Transfer	980	9%	983	9%	1,120	11%	1,173	10%	1,190	10%	21%	10%	14%
Returning Transfer	497	5%	1,025	9%	776	7%	1,024	9%	741	6%	49%	7%	4%
Returning Student	995	9%	590	5%	598	6%	773	7%	993	8%	0%	7%	6%
Continuing Student	6,961	66%	7,403	66%	6,718	65%	7,287	63%	7,614	64%	9%	65%	61%
Unreported	31	0%	183	2%	38	0%	32	0%	44	0%	42%	1%	1%
<b>Total</b>	<b>10,553</b>	<b>100%</b>	<b>11,242</b>	<b>100%</b>	<b>10,395</b>	<b>100%</b>	<b>11,641</b>	<b>100%</b>	<b>11,930</b>	<b>100%</b>	<b>13%</b>	<b>100%</b>	<b>100%</b>

Source: SDCCD Information System

## Miramar College Section I: Headcount and Student Characteristics

**Headcount by Educational Objective:** Almost half of the Miramar student population (44%) selected transfer with or without an AA degree as their educational objective during the five fall terms being reported. Both vocational certificate without transfer and obtaining a high school degree or GED, as educational objectives, increased the most among students from Fall 2004 to Fall 2005 (57% and 68%, respectively).

Figure 1.6. Miramar College Headcount by Educational Objective



## Miramar College Section I: Headcount and Student Characteristics

Table 1.6. Miramar College Headcount by Educational Objective

	Fall 2004		Fall 2005		Fall 2006		Fall 2007		Fall 2008		% Change Fall 04-08	College Average Fall 04-08	All Colleges Average Fall 04-08
Transfer With AA/AS	3,570	34%	3,669	33%	3,564	34%	3,812	33%	3,771	32%	6%	33%	34%
Transfer No AA/AS	1,175	11%	1,277	11%	1,313	13%	1,345	12%	1,248	10%	6%	11%	13%
AA/AS No Transfer	528	5%	584	5%	499	5%	579	5%	644	5%	22%	5%	5%
Voc Deg No Transfer	84	1%	91	1%	76	1%	99	1%	89	1%	6%	1%	1%
Voc Cert No Transfer	130	1%	182	2%	167	2%	168	1%	204	2%	57%	2%	1%
Decide Career	322	3%	297	3%	327	3%	368	3%	381	3%	18%	3%	4%
New Career	755	7%	814	7%	883	8%	947	8%	1,006	8%	33%	8%	8%
Update Job Skills	962	9%	1,052	9%	678	7%	917	8%	866	7%	-10%	8%	5%
Maint Cert-License	201	2%	261	2%	216	2%	234	2%	267	2%	33%	2%	2%
Ed Development	279	3%	267	2%	302	3%	360	3%	344	3%	23%	3%	4%
Basic Skills	103	1%	125	1%	140	1%	140	1%	124	1%	20%	1%	1%
HS or GED	41	0%	48	0%	50	0%	54	0%	69	1%	68%	0%	1%
Undecided	2,118	20%	2,138	19%	2,001	19%	2,075	18%	2,073	17%	-2%	19%	18%
Move from Noncredit to Credit	0	0%	0	0%	0	0%	8	0%	8	0%	--	0%	0%
4-year College Student	0	0%	0	0%	0	0%	330	3%	665	6%	--	2%	3%
Unreported	285	3%	437	4%	179	2%	205	2%	171	1%	-40%	2%	1%
<b>Total</b>	<b>10,553</b>	<b>100%</b>	<b>11,242</b>	<b>100%</b>	<b>10,395</b>	<b>100%</b>	<b>11,641</b>	<b>100%</b>	<b>11,930</b>	<b>100%</b>	<b>13%</b>	<b>100%</b>	<b>100%</b>

Source: SDCCD Information System

## Miramar College Section I: Headcount and Student Characteristics

**Headcount by Primary Language:** On average, 93% of the Miramar student population spoke English as their primary language. This was comparable to the overall student population for all colleges in the district (93%). There was an increase for those who reported speaking English and those who spoke a language other than English (13% and 16%, respectively), which was consistent with the overall increase in headcount between Fall 2004 and Fall 2008.

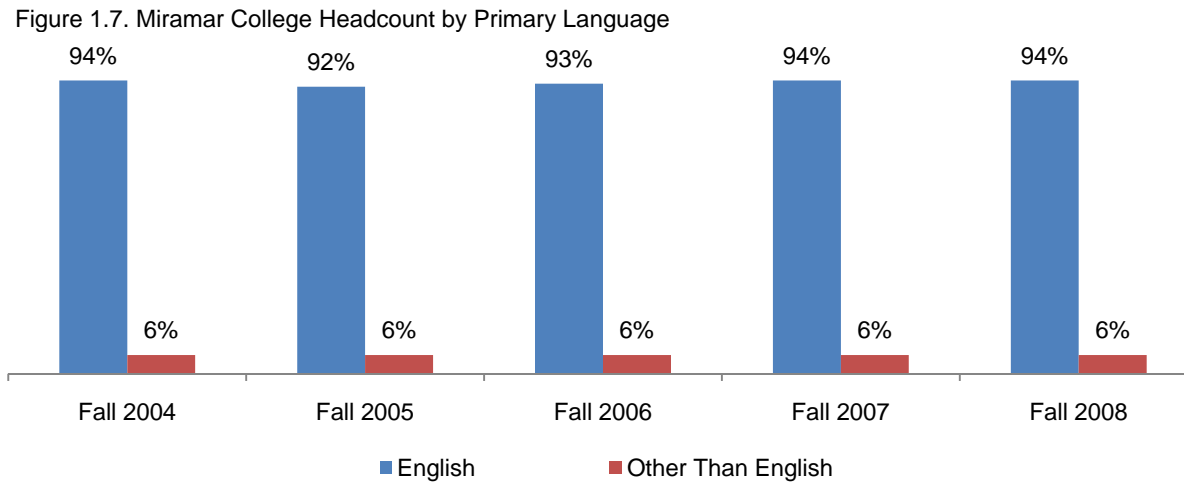


Table 1.7. Miramar College Headcount by Primary Language

	Fall 2004		Fall 2005		Fall 2006		Fall 2007		Fall 2008		% Change Fall 04-08	College Average Fall 04-08	All Colleges Average Fall 04-08
English	9,869	94%	10,359	92%	9,694	93%	10,899	94%	11,183	94%	13%	93%	93%
Other Than English	636	6%	674	6%	675	6%	730	6%	739	6%	16%	6%	6%
Unreported	48	0%	209	2%	26	0%	12	0%	8	0%	-83%	1%	0%
<b>Total</b>	<b>10,553</b>	<b>100%</b>	<b>11,242</b>	<b>100%</b>	<b>10,395</b>	<b>100%</b>	<b>11,641</b>	<b>100%</b>	<b>11,930</b>	<b>100%</b>	<b>13%</b>	<b>100%</b>	<b>100%</b>

Source: SDCCD Information System

# Miramar College Section I: Headcount and Student Characteristics

**Headcount by Prior Education Level:** From Fall 2004 to Fall 2008, a majority of the Miramar College student population were high school graduates (66%). Miramar students who were current high school students increased 120%, from 84 in Fall 2004 to 185 in Fall 2008. On average, 14% of the Miramar student population had a bachelor's degree or higher and 7% had an associate degree.

Figure 1.8. Miramar College Headcount by Prior Education Level

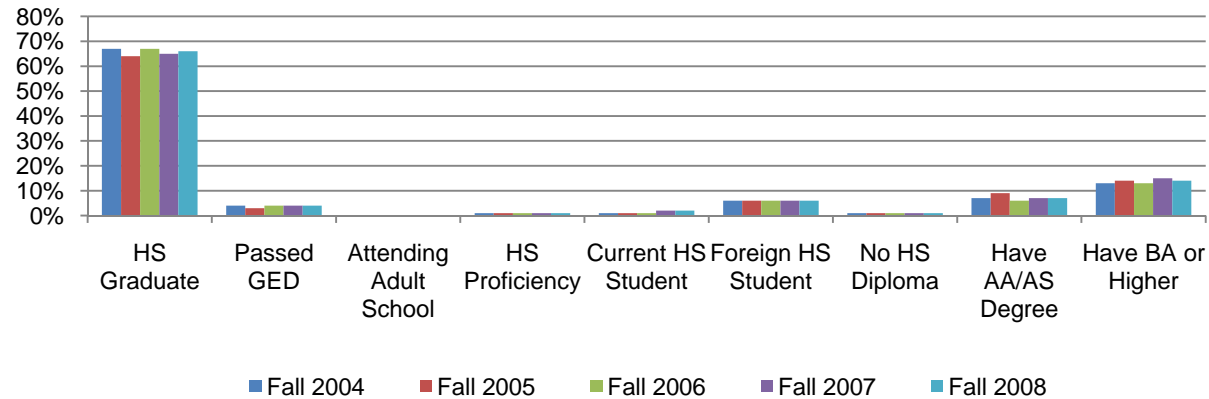


Table 1.8. Miramar College Headcount by Prior Education Level

	Fall 2004		Fall 2005		Fall 2006		Fall 2007		Fall 2008		% Change Fall 04-08	College Average Fall 04-08	All Colleges Average Fall 04-08
HS Graduate	7,100	67%	7,148	64%	6,989	67%	7,540	65%	7,827	66%	10%	66%	67%
Passed GED	412	4%	380	3%	371	4%	443	4%	460	4%	12%	4%	5%
Attending Adult School	12	0%	10	0%	19	0%	17	0%	23	0%	92%	0%	0%
HS Proficiency	57	1%	74	1%	58	1%	64	1%	73	1%	28%	1%	1%
Current HS Student	84	1%	119	1%	137	1%	199	2%	185	2%	120%	1%	4%
Foreign HS Student	631	6%	632	6%	653	6%	682	6%	687	6%	9%	6%	5%
No HS Diploma	129	1%	142	1%	114	1%	144	1%	165	1%	28%	1%	2%
Have AA/AS Degree	783	7%	997	9%	651	6%	809	7%	787	7%	1%	7%	5%
Have BA or Higher	1,338	13%	1,586	14%	1,390	13%	1,737	15%	1,720	14%	29%	14%	11%
Unreported	7	0%	154	1%	13	0%	6	0%	3	0%	-57%	0%	0%
<b>Total</b>	<b>10,553</b>	<b>100%</b>	<b>11,242</b>	<b>100%</b>	<b>10,395</b>	<b>100%</b>	<b>11,641</b>	<b>100%</b>	<b>11,930</b>	<b>100%</b>	<b>13%</b>	<b>100%</b>	<b>100%</b>

Source: SDCCD Information System

## Miramar College Section I: Headcount and Student Characteristics

**Headcount by Service Area of Residence:** Between Fall 2004 and Fall 2008, on average, 28% of the students who resided within the Miramar service area attended Miramar College. Among the three college service areas, the greatest proportion of Miramar students resided within its service area. Forty-nine percent of the students who resided outside of the District service area attended Miramar College.

Figure 1.9. Miramar College Headcount by Service Area of Residence

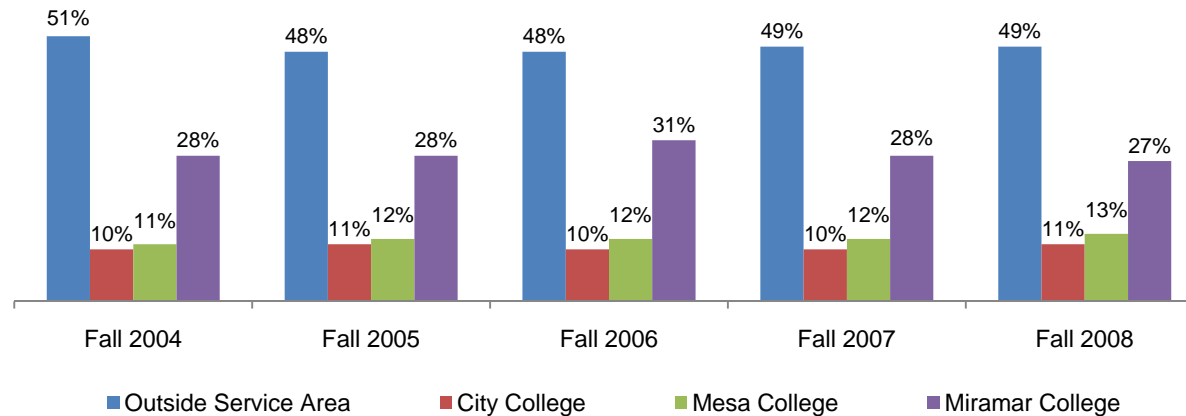


Table 1.9. Miramar College Headcount by Service Area of Residence

	Fall 2004		Fall 2005		Fall 2006		Fall 2007		Fall 2008		% Change Fall 04-08	College Average Fall 04-08	All Colleges Average Fall 04-08
	Headcount	%	Headcount	%	Headcount	%	Headcount	%	Headcount	%			
Outside District Service Area	5,404	51%	5,451	48%	4,969	48%	5,742	49%	5,790	49%	7%	49%	36%
City College	1,018	10%	1,190	11%	1,022	10%	1,193	10%	1,333	11%	31%	10%	30%
Mesa College	1,119	11%	1,340	12%	1,218	12%	1,420	12%	1,573	13%	41%	12%	22%
Miramar College	3,005	28%	3,107	28%	3,173	31%	3,280	28%	3,231	27%	8%	28%	12%
Unreported	7	0%	154	1%	13	0%	6	0%	3	0%	-57%	0%	0%
<b>Total</b>	<b>10,553</b>	<b>100%</b>	<b>11,242</b>	<b>100%</b>	<b>10,395</b>	<b>100%</b>	<b>11,641</b>	<b>100%</b>	<b>11,930</b>	<b>100%</b>	<b>13%</b>	<b>100%</b>	<b>100%</b>

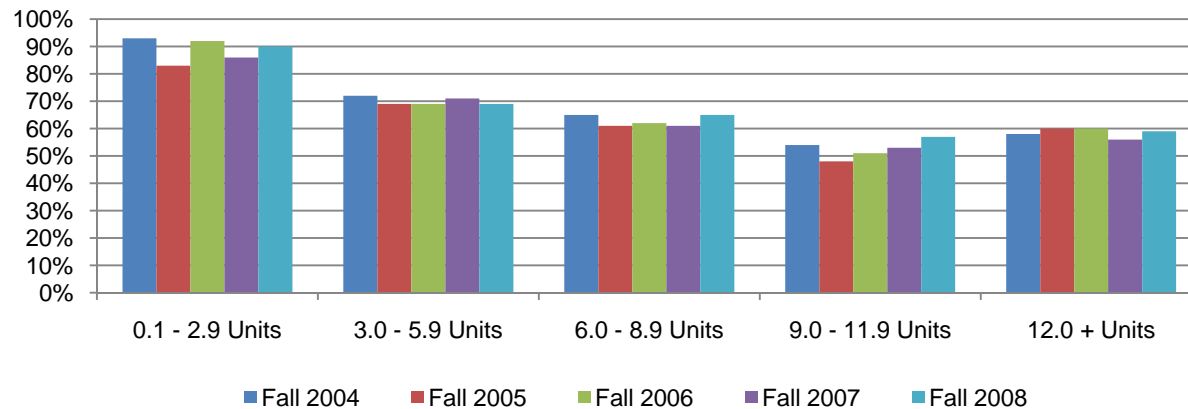
Source: SDCCD Information System



## Miramar College Section I: Headcount and Student Characteristics

**Headcount by Units Attempted by Units Earned:** Table 1.10 shows the number of units earned (in columns) for each range of the number of units attempted (in rows). The greatest proportion of students who attempted and earned the maximum number of units attempted were those in the 0.1-2.9 unit range on average (89%). The least proportion of students who attempted and earned the maximum number of units attempted were those in the 9.0-11.9 unit range on average (53%). The number of students who attempted and earned between 6.0-8.9 units increased 30% over the five terms being reported, while students who attempted and earned between 9.0 and 11.9 units decreased 38% between Fall 2004 and Fall 2008.

Figure 1.10. Miramar College Headcount by Units Attempted by Units Earned



# Miramar College Section I: Headcount and Student Characteristics

Table 1.10. Miramar College Headcount by Units Attempted by Units Earned

		Units Earned						
		0 Units	0.1 - 2.9 Units	3.0 - 5.9 Units	6.0 - 8.9 Units	9.0 - 11.9 Units	12.0 + Units	
Units Attempted	Fall 2004	0.1 - 2.9 Units	7%	<b>93%</b>				
		3.0 - 5.9 Units	27%	1%	<b>72%</b>			
		6.0 - 8.9 Units	18%	1%	16%	<b>65%</b>		
		9.0 - 11.9 Units	13%	1%	13%	19%	<b>54%</b>	
		12.0 + Units	7%	1%	6%	11%	18%	<b>58%</b>
Fall 2005	0.1 - 2.9 Units	17%	<b>83%</b>					
	3.0 - 5.9 Units	29%	1%	<b>69%</b>				
	6.0 - 8.9 Units	20%	1%	17%	<b>61%</b>			
	9.0 - 11.9 Units	16%	1%	13%	22%	<b>48%</b>		
	12.0 + Units	7%	1%	7%	9%	16%	<b>60%</b>	
Fall 2006	0.1 - 2.9 Units	8%	<b>92%</b>					
	3.0 - 5.9 Units	30%	1%	<b>69%</b>				
	6.0 - 8.9 Units	19%	1%	17%	<b>62%</b>			
	9.0 - 11.9 Units	14%	1%	14%	20%	<b>51%</b>		
	12.0 + Units	8%	1%	7%	9%	16%	<b>60%</b>	
Fall 2007	0.1 - 2.9 Units	14%	<b>86%</b>					
	3.0 - 5.9 Units	28%	1%	<b>71%</b>				
	6.0 - 8.9 Units	20%	1%	18%	<b>61%</b>			
	9.0 - 11.9 Units	14%	0%	14%	19%	<b>53%</b>		
	12.0 + Units	9%	1%	6%	11%	17%	<b>56%</b>	
Fall 2008	0.1 - 2.9 Units	10%	<b>90%</b>					
	3.0 - 5.9 Units	30%	1%	<b>69%</b>				
	6.0 - 8.9 Units	18%	1%	16%	<b>65%</b>			
	9.0 - 11.9 Units	13%	1%	11%	19%	<b>57%</b>		
	12.0 + Units	6%	1%	6%	12%	17%	<b>59%</b>	
% Change Fall 04-08		--	-27%	22%	30%	-38%	18%	
College Average Fall 04-08		--	89%	70%	63%	53%	59%	

Source: SDCCD Information System

Note: Tutoring and non-graded courses were excluded. Percent change was based on counts.

## Miramar College Section I: Headcount and Student Characteristics

**Headcount by First Generation:** Between Fall 2004 and Fall 2008, on average, one in five Miramar students reported being first generation college students (20%). Both groups of students, those who were and those who were not first generation college students, displayed an increase in headcount between Fall 2004 and Fall 2008 (23% and 15%, respectively), which paralleled the overall collegewide increase in headcount.

Figure 1.11. Miramar College Headcount by First Generation

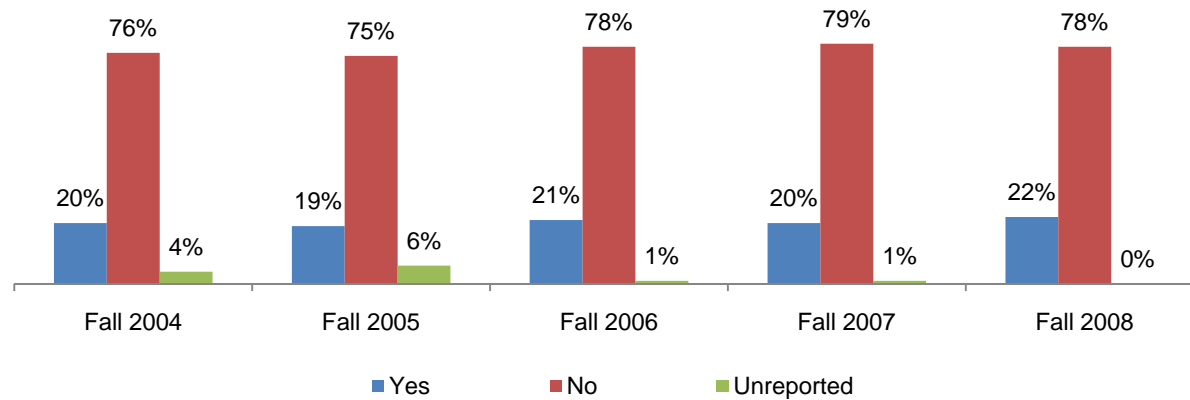


Table 1.11. Miramar College Headcount by First Generation

	Fall 2004		Fall 2005		Fall 2006		Fall 2007		Fall 2008		% Change Fall 04-08	College Average Fall 04-08	All Colleges Average Fall 04-08
Yes	2,114	20%	2,181	19%	2,152	21%	2,361	20%	2,610	22%	23%	20%	25%
No	8,047	76%	8,429	75%	8,098	78%	9,201	79%	9,277	78%	15%	77%	73%
Unreported	392	4%	632	6%	145	1%	79	1%	43	0%	-89%	2%	2%
<b>Total</b>	<b>10,553</b>	<b>100%</b>	<b>11,242</b>	<b>100%</b>	<b>10,395</b>	<b>100%</b>	<b>11,641</b>	<b>100%</b>	<b>11,930</b>	<b>100%</b>	<b>13%</b>	<b>100%</b>	<b>100%</b>

Source: SDCCD Information System

## Miramar College Section I: Headcount and Student Characteristics

**Headcount by Income Level:** Between Fall 2004 and Fall 2008, almost one-third (31%) of the Miramar student population reported making \$33,000 or more a year on average. The number of students who reported making between \$0-2,999 a year on average increased 82%, from 438 in Fall 2004 to 796 in Fall 2008. It should be noted that more than one-third of students did not report their income level. Consequently, the data may not be representative of the actual income levels of students at Miramar College.

Figure 1.12. Miramar College Headcount by Income Level

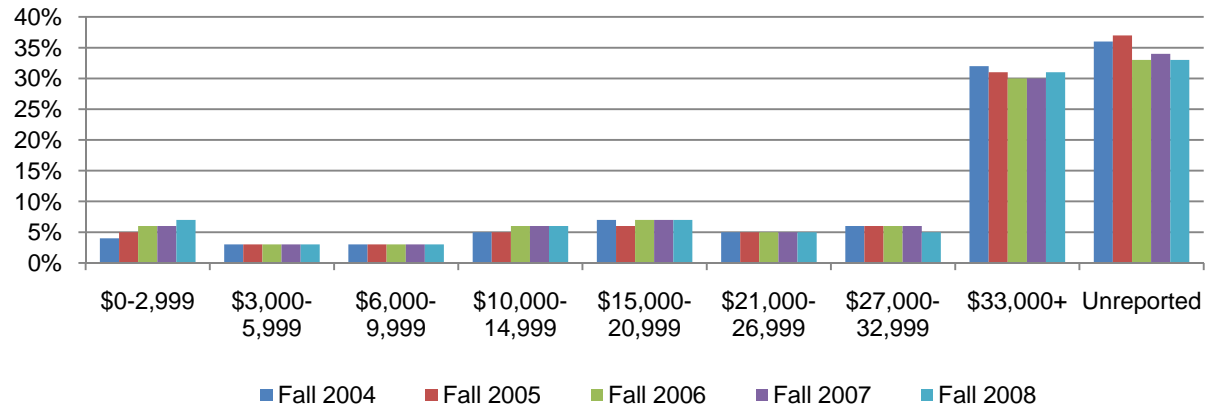


Table 1.12. Miramar College Headcount by Income Level

	Fall 2004		Fall 2005		Fall 2006		Fall 2007		Fall 2008		% Change Fall 04-08	College Average Fall 04-08	All Colleges Average Fall 04-08
	Headcount	%	Headcount	%	Headcount	%	Headcount	%	Headcount	%			
\$0-2,999	438	4%	555	5%	646	6%	743	6%	796	7%	82%	6%	8%
\$3,000-5,999	274	3%	290	3%	274	3%	323	3%	354	3%	29%	3%	4%
\$6,000-9,999	288	3%	292	3%	328	3%	351	3%	398	3%	38%	3%	4%
\$10,000-14,999	502	5%	548	5%	573	6%	642	6%	673	6%	34%	5%	8%
\$15,000-20,999	724	7%	722	6%	757	7%	810	7%	844	7%	17%	7%	8%
\$21,000-26,999	532	5%	584	5%	569	5%	586	5%	635	5%	19%	5%	6%
\$27,000-32,999	649	6%	623	6%	612	6%	674	6%	653	5%	1%	6%	6%
\$33,000+	3,393	32%	3,472	31%	3,165	30%	3,547	30%	3,660	31%	8%	31%	24%
Unreported	3,753	36%	4,156	37%	3,471	33%	3,965	34%	3,917	33%	4%	35%	31%
<b>Total</b>	<b>10,553</b>	<b>100%</b>	<b>11,242</b>	<b>100%</b>	<b>10,395</b>	<b>100%</b>	<b>11,641</b>	<b>100%</b>	<b>11,930</b>	<b>100%</b>	<b>13%</b>	<b>100%</b>	<b>100%</b>

Source: SDCCD Information System

## Miramar College Section I: Headcount and Student Characteristics

**Disability Support Programs and Services (DSPS):** On average, 97% of the Miramar student population had not received any type of disability services between Fall 2004 and Fall 2008. This was comparable to the percentage of the overall student population for all colleges in the district. Moreover, the number of students who had not received disability services increased 14%, while the number of those students who received disability services decreased 15% from Fall 2004 to Fall 2008.

Figure 1.13. Miramar College Headcount by Disability Support Programs and Services (DSPS)

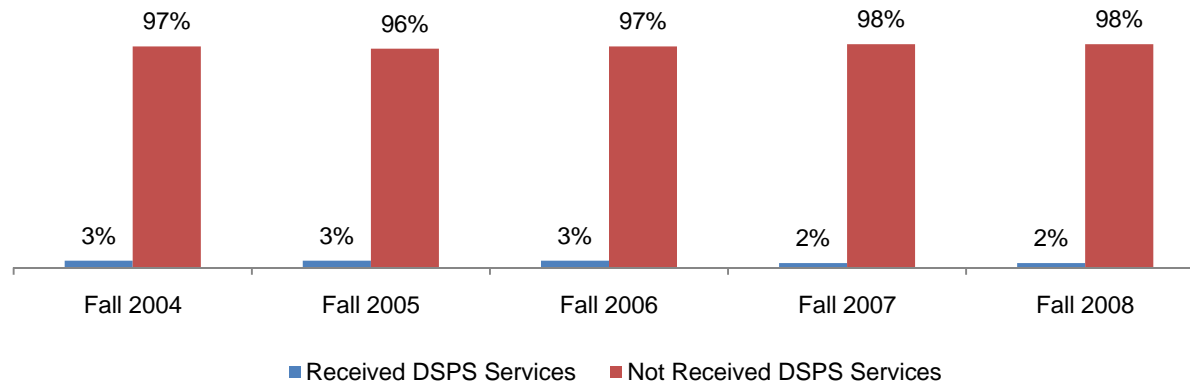


Table 1.13. Miramar College Headcount by Disability Support Programs and Services (DSPS)

	Fall 2004		Fall 2005		Fall 2006		Fall 2007		Fall 2008		% Change Fall 04-08	College Average Fall 04-08	All Colleges Average Fall 04-08
Received DSPS Services	275	3%	286	3%	260	3%	218	2%	234	2%	-15%	2%	3%
Not Received DSPS Services	10,271	97%	10,802	96%	10,122	97%	11,417	98%	11,693	98%	14%	97%	97%
Unreported	7	0%	154	1%	13	0%	6	0%	3	0%	-57%	0%	0%
<b>Total</b>	<b>10,553</b>	<b>100%</b>	<b>11,242</b>	<b>100%</b>	<b>10,395</b>	<b>100%</b>	<b>11,641</b>	<b>100%</b>	<b>11,930</b>	<b>100%</b>	<b>13%</b>	<b>100%</b>	<b>100%</b>

Source: SDCCD Information System

## Miramar College Section I: Headcount and Student Characteristics

**Headcount by Extended Opportunity Programs and Services (EOPS):** On Average, 96% of the Miramar student population had not received EOPS services between Fall 2004 and Fall 2008. This was comparable to the percentage of the overall student population for all colleges in the district. The number of students at Miramar who received EOPS services and those who had not received EOPS services increased 2% and 14%, respectively, from Fall 2004 to Fall 2008.

Figure 1.14. Miramar College Headcount by Extended Opportunity Programs and Services (EOPS)

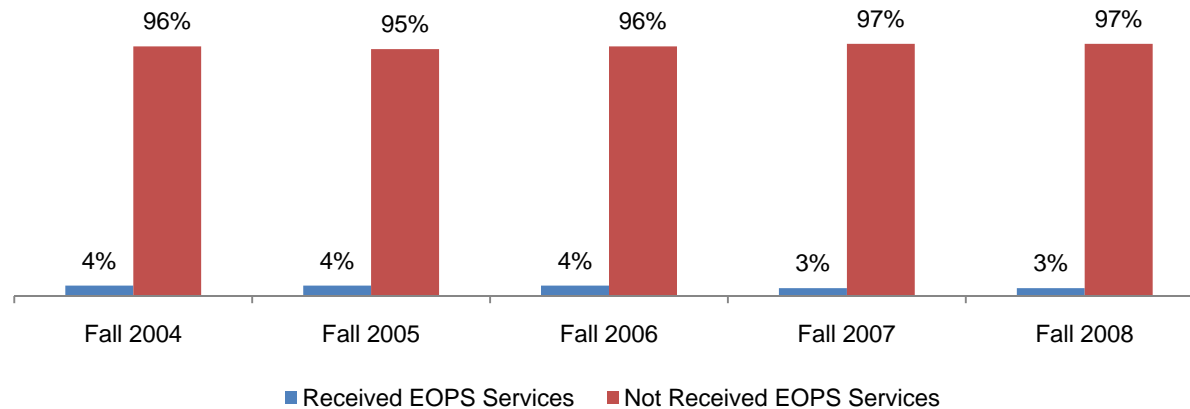


Table 1.14. Miramar College Headcount by Extended Opportunity Programs and Services (EOPS)

	Fall 2004		Fall 2005		Fall 2006		Fall 2007		Fall 2008		% Change Fall 04-08	College Average Fall 04-08	All Colleges Average Fall 04-08
Received EOPS Services	384	4%	401	4%	379	4%	401	3%	393	3%	2%	4%	3%
Not Received EOPS Services	10,162	96%	10,687	95%	10,003	96%	11,234	97%	11,534	97%	14%	96%	96%
Unreported	7	0%	154	1%	13	0%	6	0%	3	0%	-57%	0%	0%
<b>Total</b>	<b>10,553</b>	<b>100%</b>	<b>11,242</b>	<b>100%</b>	<b>10,395</b>	<b>100%</b>	<b>11,641</b>	<b>100%</b>	<b>11,930</b>	<b>100%</b>	<b>13%</b>	<b>100%</b>	<b>100%</b>

Source: SDCCD Information System

**Section II**  
**Term Persistence Rates**

## **Miramar College Section II: Term Persistence Rates**

---

This section of the Fact Book contains information on first-time to college student term persistence rates. For purposes of this report, term persistence rate is the measure of first-time to college students who were enrolled in a fall term as of census (eliminating drops and never attends prior to census) and who completed the term with a grade notation of A, B, C, CR (Credit), D, F, I, NC (Non-Credit), or RD (Report Delayed), then were enrolled as of census in the subsequent spring term and received a grade notation for that term. The information in this section includes five years of data and is reported as follows:

- 1) Overall
- 2) Gender
- 3) Age
- 4) Ethnicity



## Miramar College Section II: Term Persistence Rates

**Overall Term Persistence:** The average term persistence rate for first-time Miramar students was 61% between the Fall 2004 and Fall 2008 cohorts. Persistence rates remained relatively stable between the Fall 2004 and Fall 2008 cohorts. Overall, persistence rates decreased 1% between the Fall 2004 and Fall 2008 cohorts. The average term persistence rate of first-time Miramar students (61%) was lower compared to the average term persistence rate of first-time students enrolled in all colleges in the district (66%).

Figure 2.1. Miramar College Overall First-Time Student Term Persistence

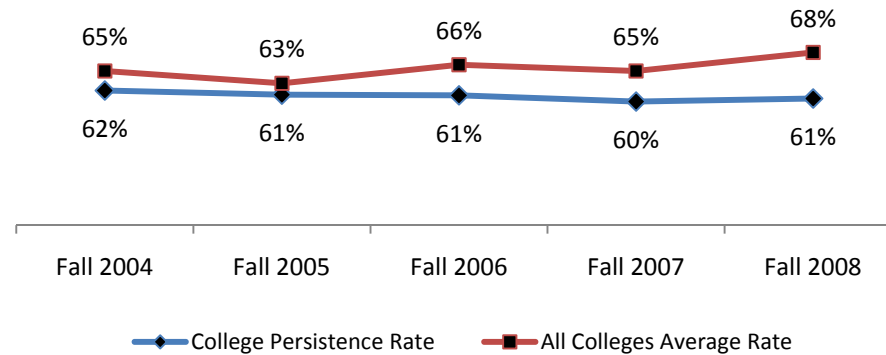


Table 2.1. Miramar College Overall First-Time Student Term Persistence

Cohort	Fall	Spring	Persistence	Fall to Spring All Colleges Rate
Fall 2004	841	520	62%	65%
Fall 2005	811	496	61%	63%
Fall 2006	842	514	61%	66%
Fall 2007	1,006	604	60%	65%
Fall 2008	1,006	609	61%	68%
<b>Average</b>			<b>61%</b>	<b>66%</b>

Source: SDCCD Information System

Note: Academy courses were excluded.

## Miramar College Section II: Term Persistence Rates

**Term Persistence by Gender:** On average, term persistence rates of female students (65%) were higher than their male student counterpart (58%) between the Fall 2004 and the Fall 2008 cohorts. Persistence rates decreased for both male and female students from the Fall 2004 cohort to the Fall 2008 cohort (1% each).

Figure 2.2. Miramar College First-Time Student Term Persistence by Gender

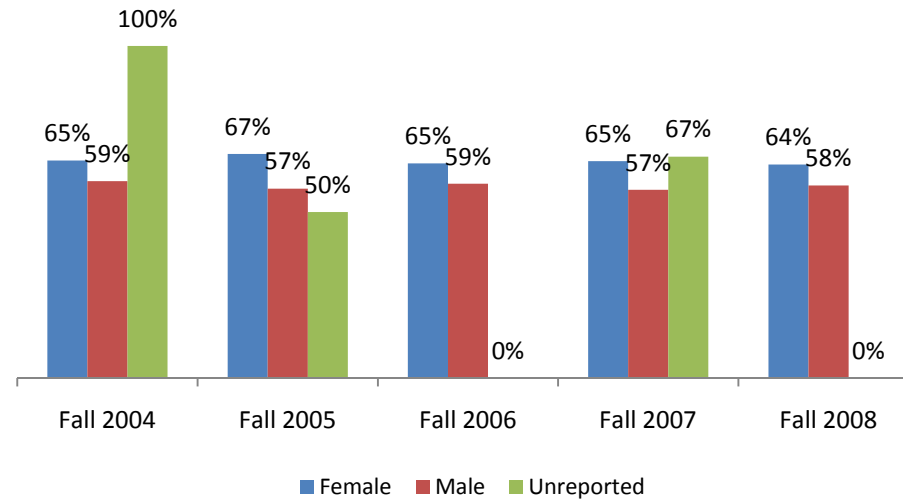


Table 2.2. Miramar College First-Time Student Term Persistence by Gender

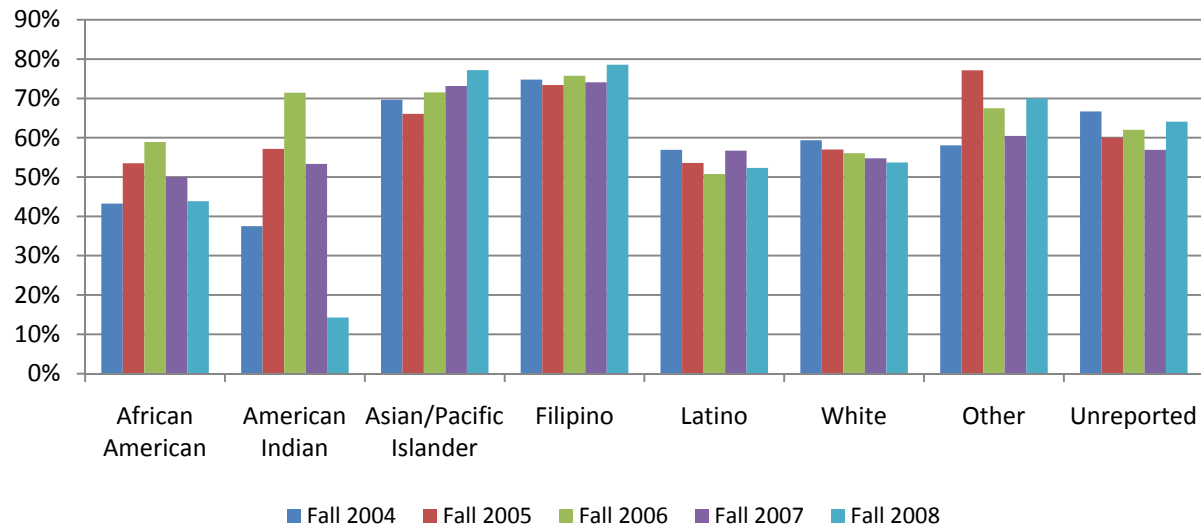
Cohort	Male			Female			Unreported		
	Fall	Spring	Persistence	Fall	Spring	Persistence	Fall	Spring	Persistence
Fall 2004	501	297	59%	339	222	65%	1	1	100%
Fall 2005	484	276	57%	323	218	67%	4	2	50%
Fall 2006	494	289	59%	348	225	65%	0	0	--
Fall 2007	614	348	57%	389	254	65%	3	2	67%
Fall 2008	600	348	58%	406	261	64%	0	0	--
<b>Average</b>			<b>58%</b>			<b>65%</b>			<b>63%</b>

Source: SDCCD Information System  
 Note: Academy courses were excluded.

## Miramar College Section II: Term Persistence Rates

**Term Persistence by Ethnicity:** The ethnic groups with the highest term persistence rates, on average, were Filipino students (75%), Asian/Pacific Islander students (72%), and students who were categorized as 'Other' ethnicities (66%). Persistence rates peaked to a high of 79% for Filipino students in the Fall 2008 cohort. Persistence rates of African American students peaked to a high of 59% in the Fall 2006 cohort and for Latino students peaked to a high of 57% in the Fall 2004 and 2007 cohorts. Between the Fall 2004 cohort and the Fall 2008 cohort, persistence rates of students who were categorized as 'Other' ethnicities increased 12%. However, persistence rates of American Indian students decreased 24%, from 38% in the Fall 2004 cohort to 14% in the Fall 2008 cohort.

Figure 2.3. Miramar College First-Time Student Term Persistence by Ethnicity



## Miramar College Section II: Term Persistence Rates

Table 2.3. Miramar College First-Time Student Term Persistence by Ethnicity

Cohort	African American			American Indian			Asian/Pacific Islander			Filipino		
	Fall	Spring	Persistence	Fall	Spring	Persistence	Fall	Spring	Persistence	Fall	Spring	Persistence
Fall 2004	37	16	43%	8	3	38%	112	78	70%	111	83	75%
Fall 2005	43	23	53%	7	4	57%	112	74	66%	124	91	73%
Fall 2006	56	33	59%	7	5	71%	123	88	72%	99	75	76%
Fall 2007	58	29	50%	15	8	53%	149	109	73%	112	83	74%
Fall 2008	57	25	44%	7	1	14%	171	132	77%	112	88	79%
<b>Average</b>			<b>50%</b>			<b>48%</b>			<b>72%</b>			<b>75%</b>

Cohort	Latino			White			Other			Unreported		
	Fall	Spring	Persistence	Fall	Spring	Persistence	Fall	Spring	Persistence	Fall	Spring	Persistence
Fall 2004	123	70	57%	374	222	59%	31	18	58%	45	30	67%
Fall 2005	112	60	54%	328	187	57%	35	27	77%	50	30	60%
Fall 2006	128	65	51%	339	190	56%	40	27	68%	50	31	62%
Fall 2007	171	97	57%	400	219	55%	43	26	60%	58	33	57%
Fall 2008	174	91	52%	391	210	54%	30	21	70%	64	41	64%
<b>Average</b>			<b>54%</b>			<b>56%</b>			<b>66%</b>			<b>62%</b>

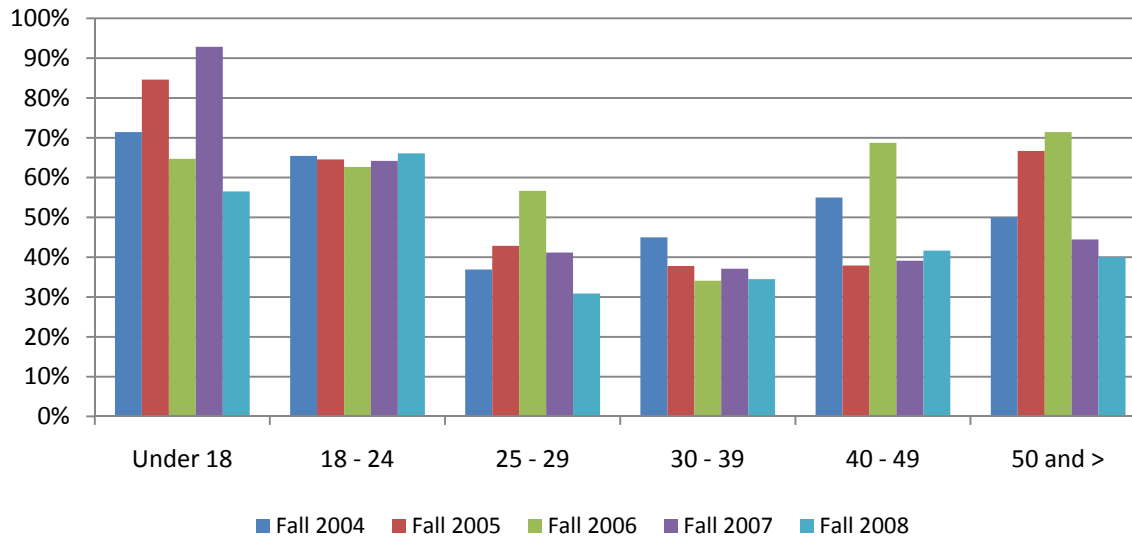
Source: SDCCD Information System

Note: Academy courses were excluded.

## Miramar College Section II: Term Persistence Rates

**Term Persistence by Age:** From the Fall 2004 cohort to the Fall 2008 cohort, term persistence rates were the highest for students under age 18 (72%), followed by students between ages 18-24 (65%), and for students ages 50 and older (53%) on average. For students under age 18, persistence rates peaked to a high of 93% in the Fall 2007 cohort. With the exception of students between ages 18 and 24 years old, all other age groups showed a decreasing trend in persistence rates. In particular, students under age 18 decreased 14% between the Fall 2004 and Fall 2008 cohorts.

Figure 2.4. Miramar College First-Time Student Term Persistence by Age



## Miramar College Section II: Term Persistence Rates

Table 2.4. Miramar College First-Time Student Term Persistence by Age

	Under 18			18 - 24			25 - 29		
Cohort	Fall	Spring	Persistence	Fall	Spring	Persistence	Fall	Spring	Persistence
Fall 2004	7	5	71%	697	456	65%	65	24	37%
Fall 2005	13	11	85%	669	432	65%	49	21	43%
Fall 2006	17	11	65%	691	433	63%	60	34	57%
Fall 2007	14	13	93%	804	516	64%	85	35	41%
Fall 2008	23	13	57%	811	536	66%	68	21	31%
<b>Average</b>			<b>72%</b>			<b>65%</b>			<b>41%</b>

	30 - 39			40 - 49			50 and >		
Cohort	Fall	Spring	Persistence	Fall	Spring	Persistence	Fall	Spring	Persistence
Fall 2004	40	18	45%	20	11	55%	12	6	50%
Fall 2005	45	17	38%	29	11	38%	6	4	67%
Fall 2006	44	15	34%	16	11	69%	14	10	71%
Fall 2007	62	23	37%	23	9	39%	18	8	44%
Fall 2008	58	20	34%	36	15	42%	10	4	40%
<b>Average</b>			<b>37%</b>			<b>46%</b>			<b>53%</b>

Source: SDCCD Information System

Note: Academy courses were excluded.

**Section III**  
**Student Outcomes**

## Miramar College Section III: Student Outcomes

---

This section of the Fact Book contains information on various student outcomes which may be considered indirect assessments of student learning. The outcomes included in this section are: 1) Annual Successful Course Completion Rates, 2) Annual Retention Rates, 3) Annual GPA, 4) Annual Awards Conferred, and 5) Annual Transfer Volume. All of the information in this section includes five years of data by gender, age, and ethnicity. The following describes in detail each of the outcomes listed.

- 1) Successful Course Completion Rates. The first outcome reported in this section is successful course completion, or student success rate. For purposes of this report, the success rate is the percentage of students who completed a course with a grade of A, B, C, or CR out of total enrollments as of census. *Note: Tutoring and non-credit classes are excluded.*
- 2) Retention Rates. The second outcome reported in this section is retention rate. For purposes of this report, the retention rate is the percentage of students who completed a course with a grade of A, B, C, D, F, CR, NC, I, or RD out of total enrollments as of census.
- 3) Annual GPA. The third outcome reported in this section is annual GPA. For purposes of this report, the annual GPA is the cumulative term grade point average of all courses taken for a grade in one academic year.
- 4) Annual Awards Conferred. The fourth outcome reported in this section is the annual awards conferred. For purposes of this report, the annual awards conferred are the total number of associate degrees and certificates awarded in a single academic year (summer, fall and, spring).
- 5) Annual Transfer Volume. The last outcome reported in this section is the number of students who transfer annually. For the purposes of this report, the annual transfer volume represents the total number of students who transferred to a 4-year institution either during the last semester they were enrolled at an SDCCD college or up to three semesters following the last semester they were enrolled at an SDCCD college. The last semester attended includes students who stopped out for one or more semesters and enrolled at a later date (reverse transfer). The student must also have completed 12 or more cumulative transferrable units earned within 12 consecutive semesters preceding and including the last semester enrolled at SDCCD.

*Note: Transfer volume that was reported by the Office of Institutional Research and Planning prior to Summer 2009 included all students regardless of the number of transferrable units completed or the time span between last semester attended and actual transfer. Consequently, the counts were much higher than the volume being reported using the current methodology.*



## Miramar College Section III: Student Outcomes (Success Rates)

**Overall Success Rates:** Miramar College annual success rates remained relatively stable from 2004/05 to 2008/09, with a five-year average of 68%. This five-year average success rate was higher than the five-year average success rate of all colleges in the district (66%). The Miramar College annual success rates were higher, on average, compared to the annual success rates of all colleges in the district between 2004/05 and 2008/09.

Figure 3.1. Miramar College Overall Success Rates

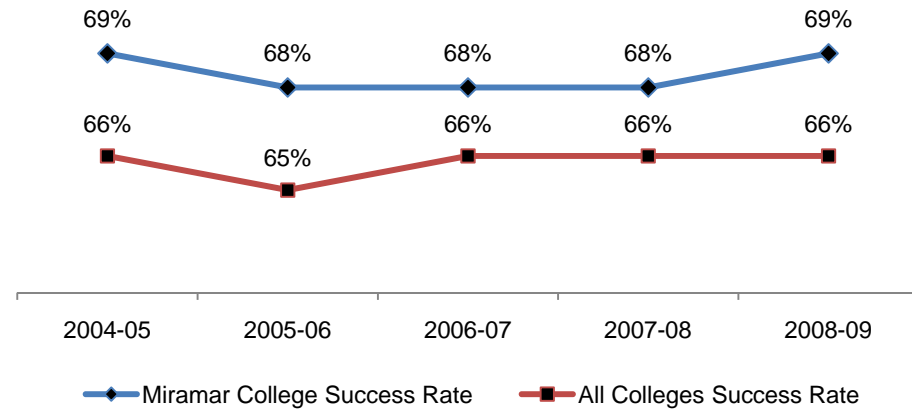


Table 3.1. Miramar College Overall Success Rates

	2004-05	2005-06	2006-07	2007-08	2008-09	% Change 04/05-08/09	College Average 2004-09	All Colleges Average 2004-09
<b>Average</b>	<b>69%</b>	<b>68%</b>	<b>68%</b>	<b>68%</b>	<b>69%</b>	<b>0%</b>	<b>68%</b>	<b>66%</b>

Source: SDCCD Information System

Note: Tutoring and non-credit classes were excluded.

## Miramar College Section III: Student Outcomes (Success Rates)

**Success Rates by Gender:** On average, both female (69%) and male (68%) students had comparable success rates between 2004/05 and 2008/09. At Miramar College, both male and female students had higher average success rates compared to the average success rates of the male and female student populations of all colleges in the district (65% and 66%, respectively). Both male and female students at Miramar College had average success rates comparable to the average success rate of the general student population at Miramar (68%). However, the rates exceeded the all colleges in the district general student population average success rate of 66%.

Figure 3.2. Miramar College Success Rates by Gender

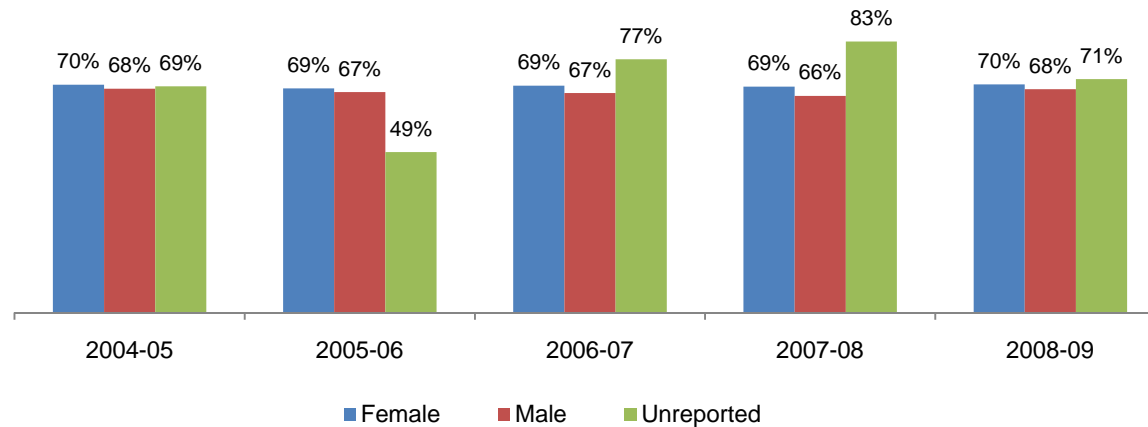


Table 3.2. Miramar College Success Rates by Gender

	2004-05	2005-06	2006-07	2007-08	2008-09	College Average 2004-09	All Colleges Average 2004-09
Female	70%	69%	69%	69%	70%	69%	66%
Male	68%	67%	67%	66%	68%	68%	65%
Unreported	69%	49%	77%	83%	71%	63%	66%
<b>Average</b>	<b>69%</b>	<b>68%</b>	<b>68%</b>	<b>68%</b>	<b>69%</b>	<b>68%</b>	<b>66%</b>

Source: SDCCD Information System

Note: Tutoring and non-credit classes were excluded.

## Miramar College Section III: Student Outcomes (Success Rates)

**Success Rates by Ethnicity:** On average, the ethnic groups with the highest success rates between 2004/05 and 2008/09 were White and Asian/Pacific Islanders students (71% each). The average success rates of African American, American Indian, Latino, and students categorized as 'Other' ethnicities were lower compared to the average success rates of both the general student populations at Miramar College (68%) and all colleges in the district (66%). The average success rates of Asian/Pacific Islander and White students exceeded the same averages. The average success rate of Filipino students (67%) was higher than the average success rate of the general student population for all colleges in the district, while the same average was lower than the average success rate of the general student population at Miramar.

Figure 3.3. Miramar College Success Rates by Ethnicity

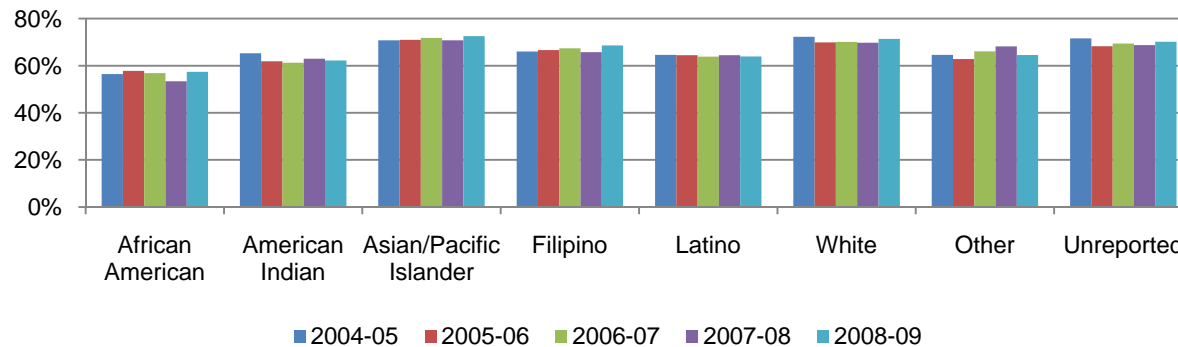


Table 3.3. Miramar College Success Rates by Ethnicity

	2004-05	2005-06	2006-07	2007-08	2008-09	College Average 2004-09	All Colleges Average 2004-09
African American	56%	58%	57%	53%	57%	56%	54%
American Indian	65%	62%	61%	63%	62%	63%	61%
Asian/Pacific Islander	71%	71%	72%	71%	73%	71%	70%
Filipino	66%	67%	67%	66%	69%	67%	66%
Latino	65%	64%	64%	64%	64%	64%	61%
White	72%	70%	70%	70%	71%	71%	70%
Other	65%	63%	66%	68%	65%	65%	65%
Unreported	72%	68%	69%	69%	70%	70%	67%
<b>Average</b>	<b>69%</b>	<b>68%</b>	<b>68%</b>	<b>68%</b>	<b>69%</b>	<b>68%</b>	<b>66%</b>

Source: SDCCD Information System

Note: Tutoring and non-credit classes were excluded.

## Miramar College Section III: Student Outcomes (Success Rates)

**Success Rates by Age:** With the exception of students who were under age 18, a general trend between 2004/05 and 2008/09 showed that as age increased, so did success rates. Students under age 18 had the highest success rate on average (82%). Students ages 40-49 generally showed a mild downward trend in success rates, from 79% in 2004/05 to 74% in 2008/09. The average success rates of all the age groups were higher than or comparable to the average success rates of both the general student populations at Miramar College (68%) and all colleges in the district (66%).

Figure 3.4. Miramar College Success Rates by Age

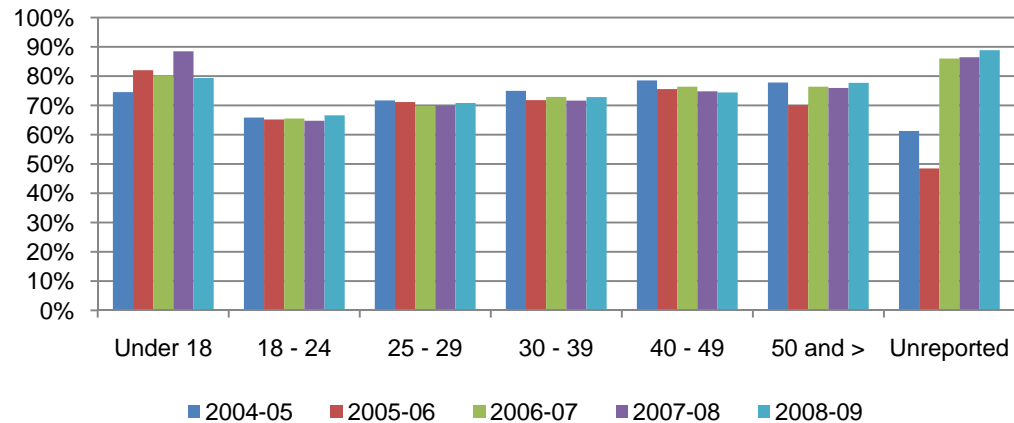


Table 3.4. Miramar College Success Rates by Age

	2004-05	2005-06	2006-07	2007-08	2008-09	College Average 2004-09	All Colleges Average 2004-09
Under 18	75%	82%	80%	89%	79%	82%	81%
18 - 24	66%	65%	66%	65%	67%	66%	63%
25 - 29	72%	71%	70%	70%	71%	71%	68%
30 - 39	75%	72%	73%	72%	73%	73%	69%
40 - 49	79%	76%	76%	75%	74%	76%	71%
50 and >	78%	70%	76%	76%	78%	76%	70%
Unreported	61%	49%	86%	86%	89%	62%	68%
<b>Average</b>	<b>69%</b>	<b>68%</b>	<b>68%</b>	<b>68%</b>	<b>69%</b>	<b>68%</b>	<b>66%</b>

Source: SDCCD Information System

Note: Tutoring and non-credit classes were excluded.

## Miramar College Section III: Student Outcomes (Retention Rates)

**Overall Retention Rates:** The annual retention rates for Miramar College students showed a 4% increase between 2004/05 and 2008/09, with a five-year average of 75%. This five-year average retention rate was lower compared to the five-year average retention rate of all colleges in the district (81%). The Miramar College annual retention rates were lower, on average, compared to the annual retention rates of all colleges in the district between 2004/05 and 2008/09.

Figure 3.5. Miramar College Overall Retention Rates

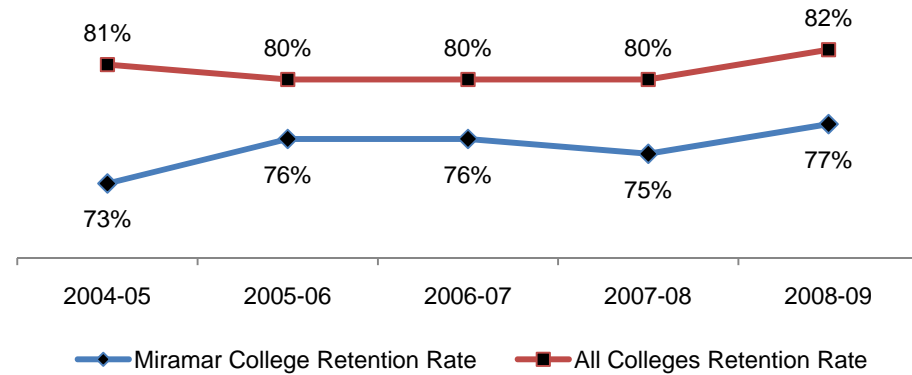


Table 3.5. Miramar College Overall Retention Rates

	2004-05	2005-06	2006-07	2007-08	2008-09	% Change 04/05-08/09	College Average 2004-09	All Colleges Average 2004-09
<b>Average</b>	<b>73%</b>	<b>76%</b>	<b>76%</b>	<b>75%</b>	<b>77%</b>	<b>4%</b>	<b>75%</b>	<b>81%</b>

Source: SDCCD Information System

## Miramar College Section III: Student Outcomes (Retention Rates)

**Retention Rates by Gender:** On average, female student retention rates (81%) were higher compared to their male student counterpart (71%) between 2004/05 and 2008/09. The average retention rates of both male and female students at Miramar College were lower than the average retention rates of the male and female student populations of all colleges in the district (80% and 82%, respectively). The average retention rate of male students at Miramar College was lower compared to the average retention rate of the general student population at Miramar College (75%), while the average retention rate of female students at Miramar was higher compared to the same average. Between 2004/05 and 2008/09, the average retention rate of the male student population at Miramar College was lower than the average retention rate of the general student population of all colleges in the district (81%), while the average retention rate of female students at Miramar was comparable to the same average.

Figure 3.6. Miramar College Retention Rates by Gender

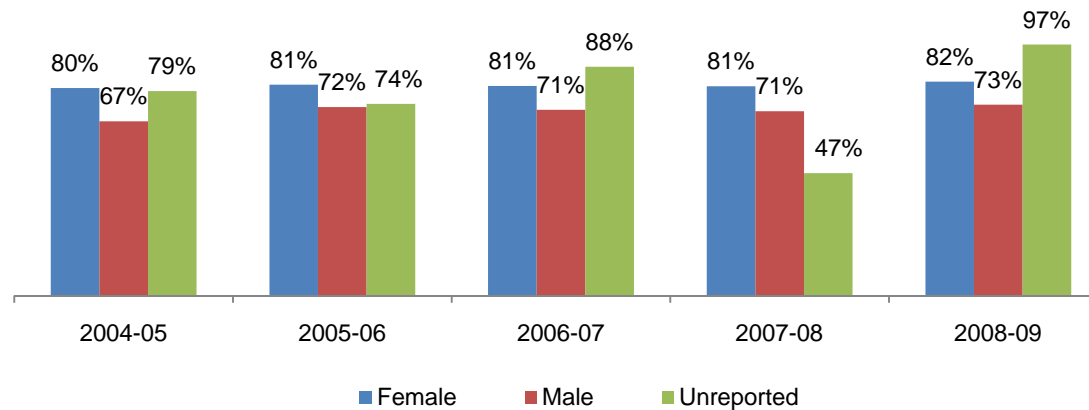


Table 3.6. Miramar College Retention Rates by Gender

	2004-05	2005-06	2006-07	2007-08	2008-09	College Average 2004-09	All Colleges Average 2004-09
Female	80%	81%	81%	81%	82%	81%	82%
Male	67%	72%	71%	71%	73%	71%	80%
Unreported	79%	74%	88%	47%	97%	71%	80%
<b>Average</b>	<b>73%</b>	<b>76%</b>	<b>76%</b>	<b>75%</b>	<b>77%</b>	<b>75%</b>	<b>81%</b>

Source: SDCCD Information System

## Miramar College Section III: Student Outcomes (Retention Rates)

**Retention Rates by Ethnicity:** The ethnic groups with the highest retention rates, on average, were Asian/Pacific Islanders students (83%) and Filipino students (81%) between 2004/05 and 2008/09. The average retention rates of African American, American Indian, Latino, and White students were lower compared to the average retention rates of both the general student populations at Miramar College (75%) and all colleges in the district (81%). The average retention rates of Asian/Pacific Islander and Filipino students exceeded or were comparable to the same averages. The average retention rate of students who were categorized as ‘Other’ ethnicities (78%) was higher than the average retention rate of the general student population at Miramar College, however, it was lower than the average retention rate of the general student population for all colleges in the district.

Figure 3.7. Miramar College Retention Rates by Ethnicity

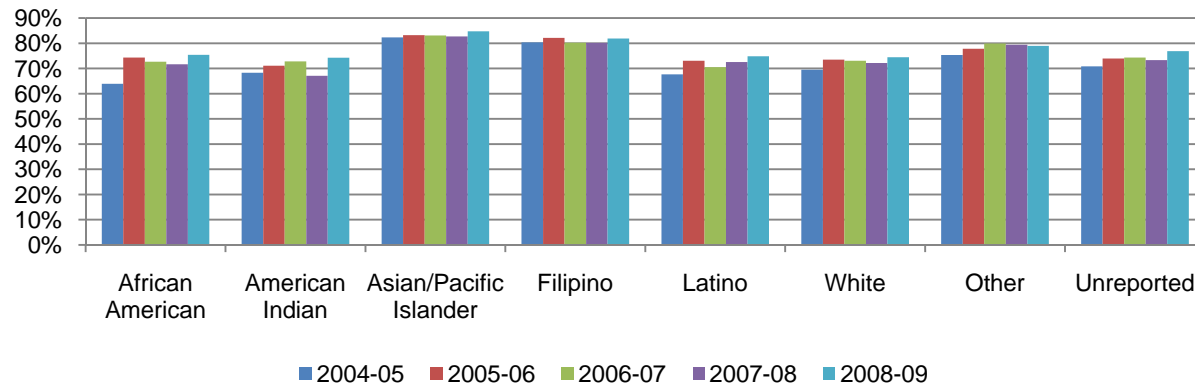


Table 3.7. Miramar College Retention Rates by Ethnicity

	2004-05	2005-06	2006-07	2007-08	2008-09	College Average 2004-09	All Colleges Average 2004-09
African American	64%	74%	73%	72%	75%	72%	78%
American Indian	68%	71%	73%	67%	74%	71%	77%
Asian/Pacific Islander	82%	83%	83%	83%	85%	83%	84%
Filipino	80%	82%	80%	80%	82%	81%	82%
Latino	68%	73%	71%	73%	75%	72%	81%
White	69%	73%	73%	72%	74%	72%	81%
Other	75%	78%	80%	79%	79%	78%	82%
Unreported	71%	74%	74%	73%	77%	74%	80%
<b>Average</b>	<b>73%</b>	<b>76%</b>	<b>76%</b>	<b>75%</b>	<b>77%</b>	<b>75%</b>	<b>81%</b>

Source: SDCCD Information System

## Miramar College Section III: Student Outcomes (Retention Rates)

**Retention Rates by Age:** Between 2004/05 and 2008/09, the age groups with the highest retention rates, on average, were students who were below 18 years old (92%) and students between ages 18 and 24 years old (81%). Retention rates of students who were between ages 30-39 generally showed an upward trend, from 58% in 2004/05 to 70% in 2008/09. The average retention rates of students between ages 25 and 50 and older were lower compared to the average retention rates of both the general student populations at Miramar College (75%) and all colleges in the district (81%). The average retention rate of students under age 18 to 24 years old exceeded or was comparable to the same averages.

Figure 3.8. Miramar College Retention Rates by Age

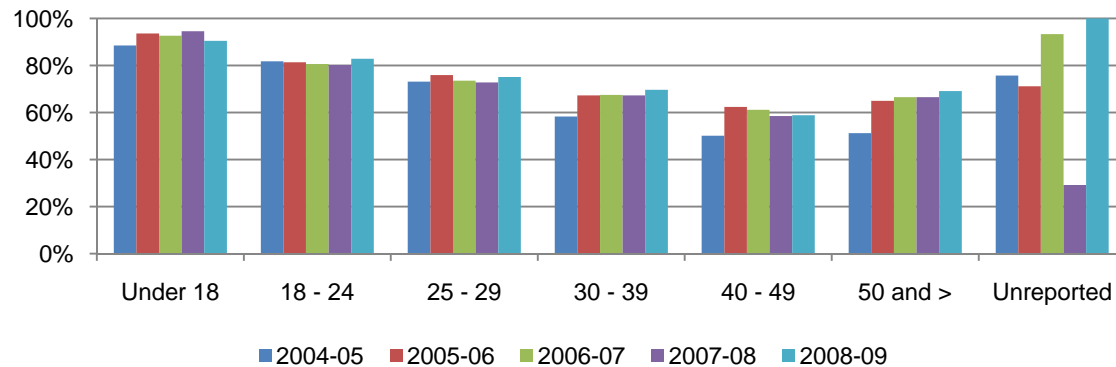


Table 3.8. Miramar College Retention Rates by Age

	2004-05	2005-06	2006-07	2007-08	2008-09	College Average 2004-09	All Colleges Average 2004-09
Under 18	89%	94%	93%	95%	90%	92%	93%
18 - 24	82%	81%	81%	80%	83%	81%	82%
25 - 29	73%	76%	74%	73%	75%	74%	80%
30 - 39	58%	67%	67%	67%	70%	66%	78%
40 - 49	50%	62%	61%	59%	59%	58%	76%
50 and >	51%	65%	67%	67%	69%	64%	78%
Unreported	76%	71%	93%	29%	100%	63%	79%
<b>Average</b>	<b>73%</b>	<b>76%</b>	<b>76%</b>	<b>75%</b>	<b>77%</b>	<b>75%</b>	<b>81%</b>

Source: SDCCD Information System



## Miramar College Section III: Student Outcomes (Annual GPA)

**Overall Annual GPA:** The annual GPA for Miramar College students declined between 2004/05 and 2008/09, with a five-year average of 2.89. Miramar's collegewide five-year average annual GPA was higher than the five-year average annual GPA of all colleges in the district (2.73). The Miramar College annual GPAs were higher, on average, compared to the annual GPAs of all colleges in the district between 2004/05 and 2008/09.

Figure 3.9. Miramar College Overall Annual GPA

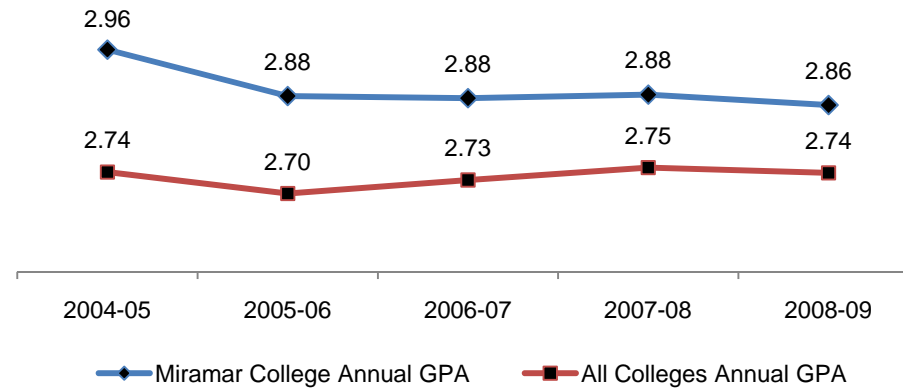


Table 3.9. Miramar College Overall Annual GPA

	2004-05	2005-06	2006-07	2007-08	2008-09	College Average 2004-09	All Colleges Average 2004-09
<b>Average</b>	<b>2.96</b>	<b>2.88</b>	<b>2.88</b>	<b>2.88</b>	<b>2.86</b>	<b>2.89</b>	<b>2.73</b>

Source: SDCCD Information System

## Miramar College Section III: Student Outcomes (Annual GPA)

**Annual GPA by Gender:** Between 2004/05 and 2008/09, male students, on average, had slightly higher annual GPA than their female student counterpart (2.90 and 2.88, respectively). The average annual GPA of both male and female students at Miramar College were higher compared to the average annual GPA of the male and female student populations of all colleges in the district (2.70 and 2.76, respectively). The average annual GPA of the female student population at Miramar fell below the average annual GPA of the general student population at Miramar College (2.89), while staying above the average annual GPA of the general student population of all colleges in the district (2.73). The average annual GPA of male students at Miramar College exceeded the same averages.

Figure 3.10. Miramar College Annual GPA by Gender

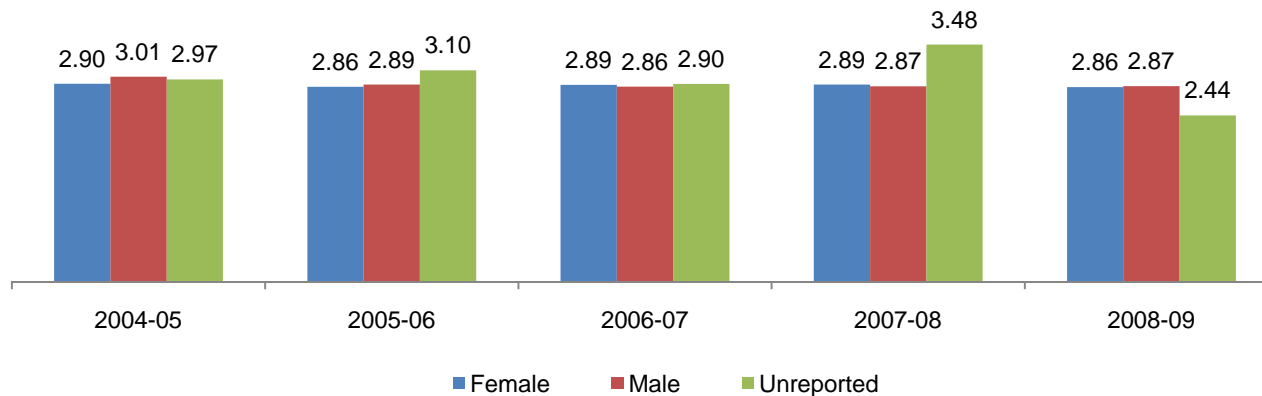


Table 3.10. Miramar College Annual GPA by Gender

	2004-05	2005-06	2006-07	2007-08	2008-09	College Average 2004-09	All Colleges Average 2004-09
Female	2.90	2.86	2.89	2.89	2.86	2.88	2.76
Male	3.01	2.89	2.86	2.87	2.87	2.90	2.70
Unreported	2.97	3.10	2.90	3.48	2.44	3.14	2.80
<b>Average</b>	<b>2.96</b>	<b>2.88</b>	<b>2.88</b>	<b>2.88</b>	<b>2.86</b>	<b>2.89</b>	<b>2.73</b>

Source: SDCCD Information System

## Miramar College Section III: Student Outcomes (Annual GPA)

**Annual GPA by Ethnicity:** White students had the highest GPA (3.04), on average, between 2004/05 and 2008/09. The average annual GPA of American Indian, Asian/Pacific Islander, and Latino students fell below the average annual GPA of the Miramar general student population (2.89). However, they were higher compared to the average annual GPA of the general student population of all colleges in the district (2.73). The average annual GPA of African American, Filipino, and students categorized as 'Other' ethnicities fell below the average annual GPA of both the general student populations at Miramar College and all colleges in the district. White students exceeded the same averages.

Figure 3.11. Miramar College Annual GPA by Ethnicity

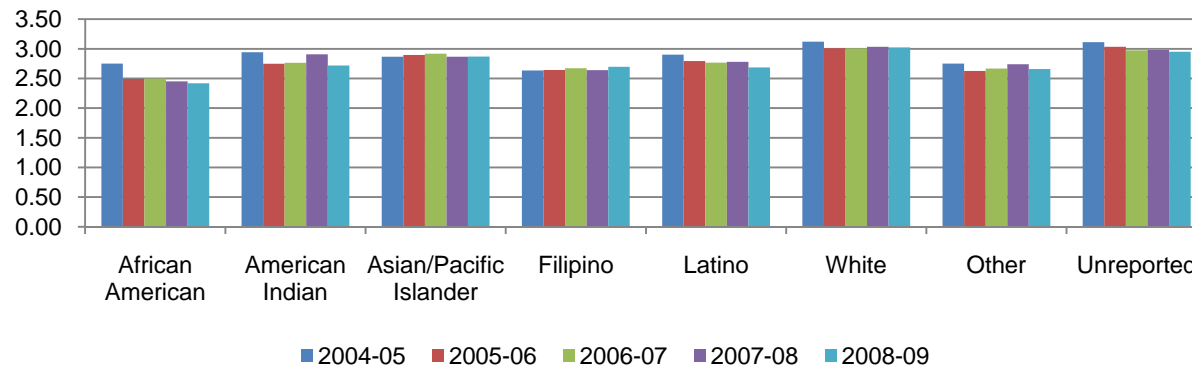


Table 3.11. Miramar College Annual GPA by Ethnicity

	2004-05	2005-06	2006-07	2007-08	2008-09	College Average 2004-09	All Colleges Average 2004-09
African American	2.75	2.49	2.50	2.45	2.42	2.52	2.32
American Indian	2.94	2.75	2.76	2.91	2.72	2.82	2.64
Asian/Pacific Islander	2.87	2.90	2.92	2.87	2.87	2.88	2.82
Filipino	2.64	2.64	2.67	2.64	2.70	2.66	2.65
Latino	2.90	2.79	2.77	2.78	2.69	2.78	2.50
White	3.12	3.01	3.01	3.03	3.02	3.04	2.92
Other	2.75	2.63	2.67	2.74	2.66	2.69	2.62
Unreported	3.11	3.03	2.98	2.98	2.95	3.01	2.86
<b>Average</b>	<b>2.96</b>	<b>2.88</b>	<b>2.88</b>	<b>2.88</b>	<b>2.86</b>	<b>2.89</b>	<b>2.73</b>

Source: SDCCD Information System

## Miramar College Section III: Student Outcomes (Annual GPA)

**Annual GPA by Age:** Between 2004/05 and 2008/09, the age groups with the highest GPA, on average, were students between 40 and 49 years old (3.50), students who were age 50 and older (3.46), and students ages 30 to 39 (3.29). The average annual GPA of students who were between ages 18-24 (2.60) fell below the average annual GPA of both the general student populations at Miramar College and all colleges in the district (2.89 and 2.73, respectively). The average annual GPA of all other age groups exceeded the same averages.

Figure 3.12. Miramar College Annual GPA by Age

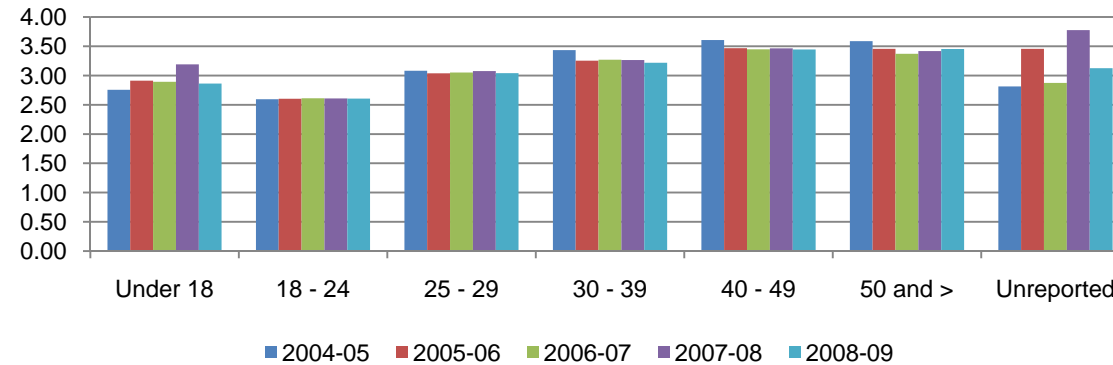


Table 3.12. Miramar Annual GPA by Age

	2004-05	2005-06	2006-07	2007-08	2008-09	College Average 2004-09	All Colleges Average 2004-09
Under 18	2.76	2.91	2.89	3.19	2.86	2.97	2.94
18 - 24	2.59	2.60	2.61	2.61	2.61	2.60	2.54
25 - 29	3.08	3.04	3.05	3.08	3.04	3.06	2.92
30 - 39	3.43	3.25	3.27	3.27	3.22	3.29	3.05
40 - 49	3.61	3.47	3.45	3.46	3.45	3.50	3.16
50 and >	3.59	3.46	3.37	3.42	3.45	3.46	3.17
Unreported	2.81	3.46	2.88	3.78	3.13	3.42	2.94
<b>Average</b>	<b>2.96</b>	<b>2.88</b>	<b>2.88</b>	<b>2.88</b>	<b>2.86</b>	<b>2.89</b>	<b>2.73</b>

Source: SDCCD Information System

## Miramar College Section III: Student Outcomes (Annual Awards Conferred)

**Annual Awards Conferred:** Overall, the trends for the type of awards conferred showed large fluctuations between 2004/05 and 2008/09. On average, 58% of the total awards conferred at Miramar College were associate degrees. The number of certificates requiring 30 to 59 units showed the greatest increase of 12%, from 135 in 2004/05 to 151 in 2008/09. In contrast, the number of awarded certificates that require 60 units or more decreased 100%, from 2 in 2004/05 to 0 in 2008/09. The number of associate degrees awarded at Miramar College, on average, was 9% less than the number of associate degrees conferred within all colleges in the district.

Figure 3.13. Miramar College Overall Awards Conferred

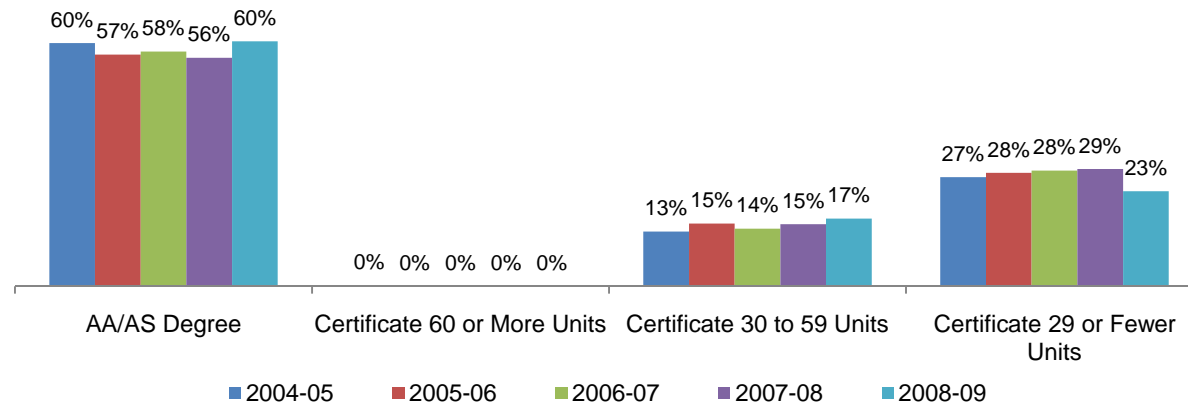


Table 3.13. Miramar College Overall Awards Conferred

	2004-05		2005-06		2006-07		2007-08		2008-09		% Change 04/05-08/09	College Average 04/05-08/09	All Colleges Average 04/05-08/09
	Count	%	Count	%	Count	%	Count	%	Count	%			
AA/AS Degree	599	60%	568	57%	473	58%	452	56%	546	60%	-9%	58%	67%
Certificate 60 or More Units	2	0%	0	0%	0	0%	0	0%	0	0%	-100%	0%	1%
Certificate 30 to 59 Units	135	13%	154	15%	116	14%	123	15%	151	17%	12%	15%	14%
Certificate 29 or Fewer Units	269	27%	278	28%	233	28%	232	29%	212	23%	-21%	27%	18%
<b>Total</b>	<b>1,005</b>	<b>100%</b>	<b>1,000</b>	<b>100%</b>	<b>822</b>	<b>100%</b>	<b>807</b>	<b>100%</b>	<b>909</b>	<b>100%</b>	<b>-10%</b>	<b>100%</b>	<b>100%</b>

Source: SDCCD Information System

## Miramar College Section III: Student Outcomes (Annual Awards Conferred)

**Annual Awards Conferred by Gender:** Of the total awards conferred at Miramar College, both male (50%) and female (50%) students, on average, received relatively the same amount of associate degrees between 2004/05 and 2008/09. Both male and female students displayed a decreased trend of 1% and 16%, respectively, for associates degrees awarded. However, for certificates requiring 30 to 59 units, both male and female students showed an increased trend between 2004/05 and 2008/09 (1% and 30%, respectively). From 2004/05 to 2008/09, female students consistently earned a disproportionately low number of awards at Miramar College compared to the female student population of all colleges in the district. Male students exhibited the opposite pattern.

Figure 3.14.1. Miramar College Annual AA/AS Degrees by Gender

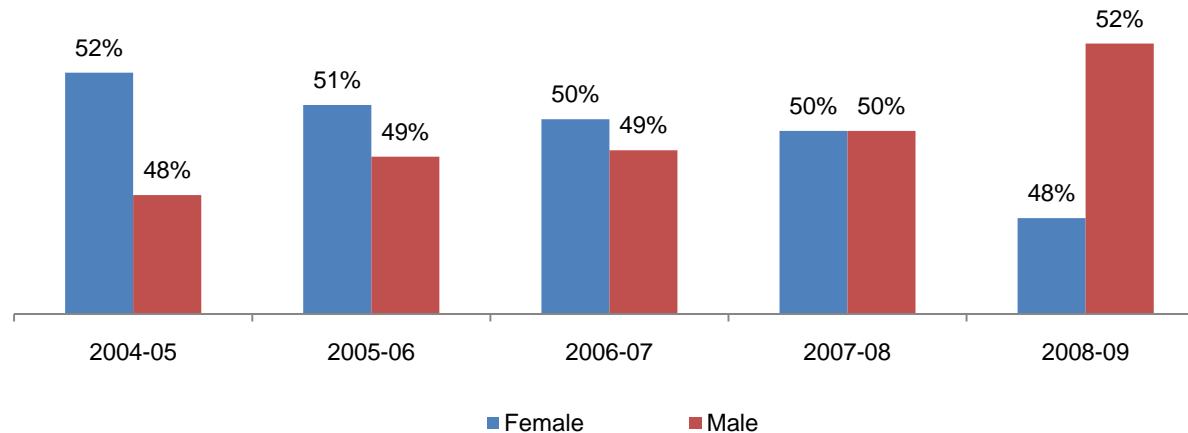
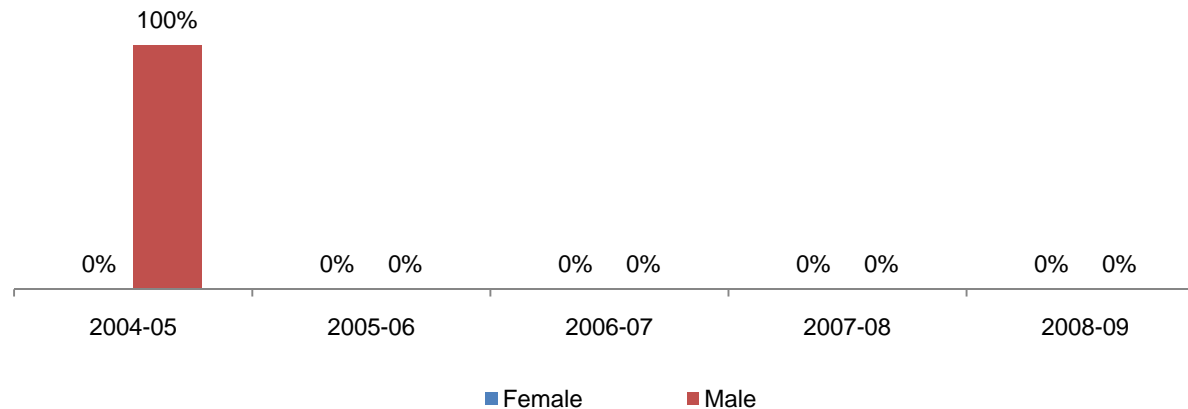


Figure 3.14.2. Miramar College Annual Certificates 60 or More Units by Gender



## Miramar College Section III: Student Outcomes (Annual Awards Conferred)

---

Figure 3.14.3. Miramar College Annual Certificates 30 to 59 Units by Gender

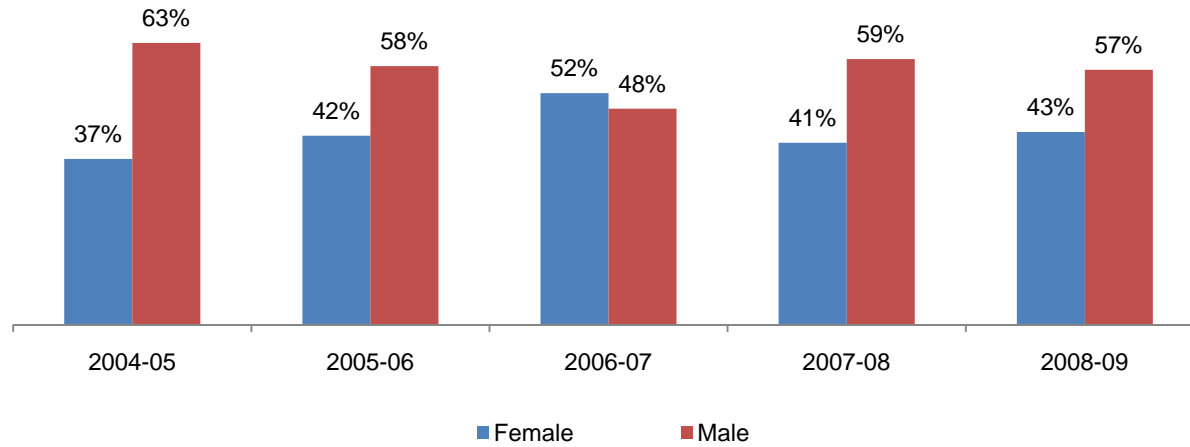
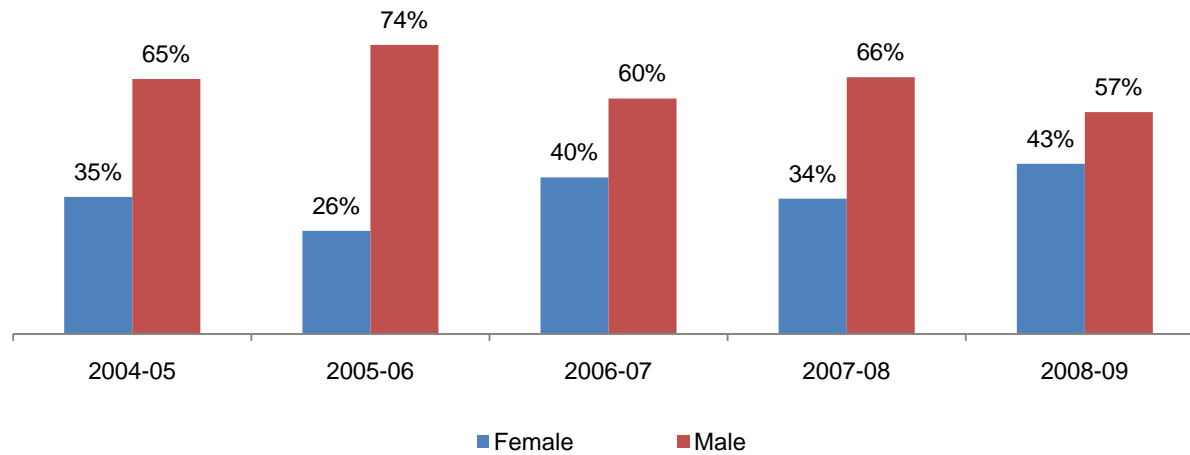


Figure 3.14.4. Miramar College Annual Certificates 29 or Fewer Units by Gender



## Miramar College Section III: Student Outcomes (Annual Awards Conferred)

Table 3.14. Miramar College Awards by Gender

		2004-05		2005-06		2006-07		2007-08		2008-09		% Change 04/05-08/09	College Average 04/05-08/09	All Colleges Average 04/05-08/09
AA/AS Degree	Female	309	52%	288	51%	238	50%	226	50%	260	48%	-16%	50%	57%
	Male	289	48%	280	49%	234	49%	226	50%	286	52%	-1%	50%	43%
	Unreported	1	0%	0	0%	1	0%	0	0%	0	0%	-100%	0%	0%
	<b>Total</b>	<b>599</b>	<b>100%</b>	<b>568</b>	<b>100%</b>	<b>473</b>	<b>100%</b>	<b>452</b>	<b>100%</b>	<b>546</b>	<b>100%</b>	<b>-9%</b>	<b>100%</b>	<b>100%</b>
Certificate 60 or More Units	Female	0	0%	0	0%	0	0%	0	0%	0	0%	0%	0%	63%
	Male	2	100%	0	0%	0	0%	0	0%	0	0%	-100%	100%	37%
	Unreported	0	0%	0	0%	0	0%	0	0%	0	0%	0%	0%	0%
	<b>Total</b>	<b>2</b>	<b>100%</b>	<b>0</b>	<b>0%</b>	<b>0</b>	<b>0%</b>	<b>0</b>	<b>0%</b>	<b>0</b>	<b>0%</b>	<b>-100%</b>	<b>100%</b>	<b>100%</b>
Certificate 30 to 59 Units	Female	50	37%	65	42%	60	52%	50	41%	65	43%	30%	43%	50%
	Male	85	63%	89	58%	56	48%	73	59%	86	57%	1%	57%	50%
	Unreported	0	0%	0	0%	0	0%	0	0%	0	0%	0%	0%	0%
	<b>Total</b>	<b>135</b>	<b>100%</b>	<b>154</b>	<b>100%</b>	<b>116</b>	<b>100%</b>	<b>123</b>	<b>100%</b>	<b>151</b>	<b>100%</b>	<b>12%</b>	<b>100%</b>	<b>100%</b>
Certificate 29 or Fewer Units	Female	94	35%	73	26%	93	40%	80	34%	92	43%	-2%	35%	42%
	Male	175	65%	205	74%	140	60%	152	66%	120	57%	-31%	65%	58%
	Unreported	0	0%	0	0%	0	0%	0	0%	0	0%	0%	0%	0%
	<b>Total</b>	<b>269</b>	<b>100%</b>	<b>278</b>	<b>100%</b>	<b>233</b>	<b>100%</b>	<b>232</b>	<b>100%</b>	<b>212</b>	<b>100%</b>	<b>-21%</b>	<b>100%</b>	<b>100%</b>

Source: SDCCD Information System



## Miramar College Section III: Student Outcomes (Annual Awards Conferred)

**Annual Awards Conferred by Ethnicity:** The number of associate degrees conferred at Miramar College increased for African American and Latino students (5% and 19%, respectively) between 2004/05 and 2008/09. From 2004/05 to 2008/09, White students received the most awards across all award categories. Asian/Pacific Islander students had the second highest number of associate degrees and certificates requiring 29 or fewer units conferred. Furthermore, Latino students had the second highest number of certificates requiring 30 to 59 units on average. These trends reflect the fact that these three ethnicities (White, Asian/Pacific Islanders and Latino students) constitute the greatest proportions of the student headcount population at Miramar College. Latino students at Miramar College were consistently underrepresented across all types of awards conferred when compared to the Latino student population of all colleges in the district, while White students were overrepresented when compared to the White student population of all colleges in the district.

Figure 3.15.1. Miramar College Annual AA/AS Degrees by Ethnicity

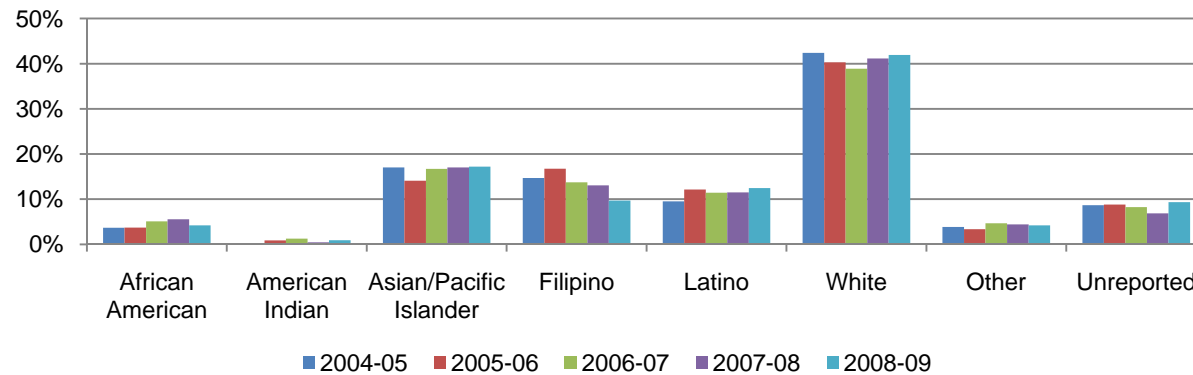
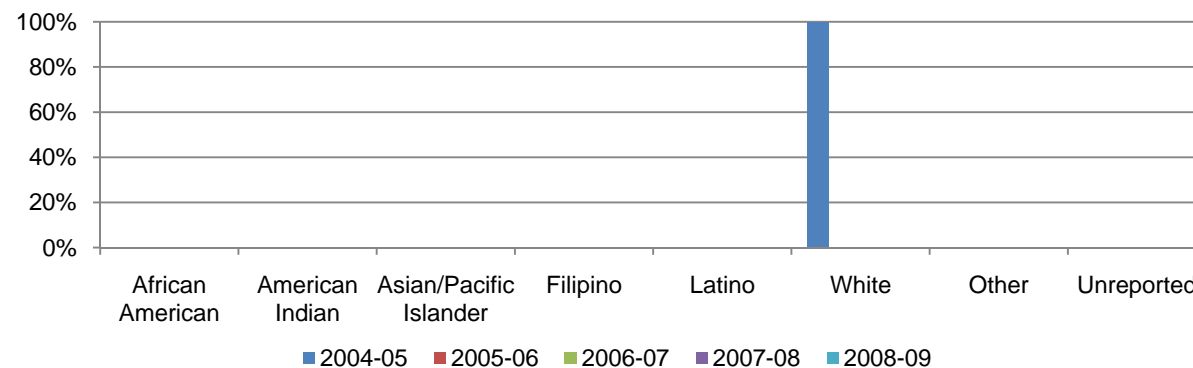


Figure 3.15.2. Miramar College Annual Certificates 60 or More Units by Ethnicity



## Miramar College Section III: Student Outcomes (Annual Awards Conferred)

Figure 3.15.3. Miramar College Annual Certificates 30 to Less than 59 Units by Ethnicity

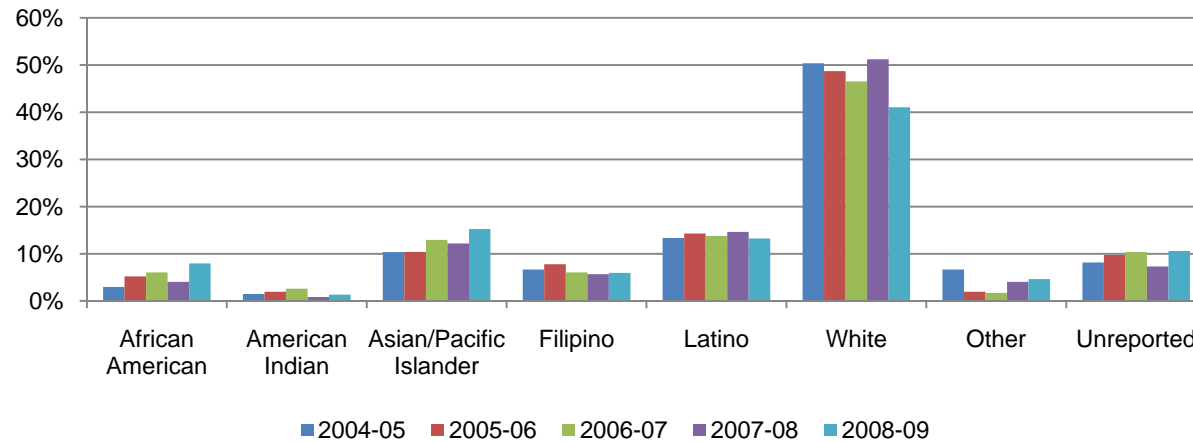
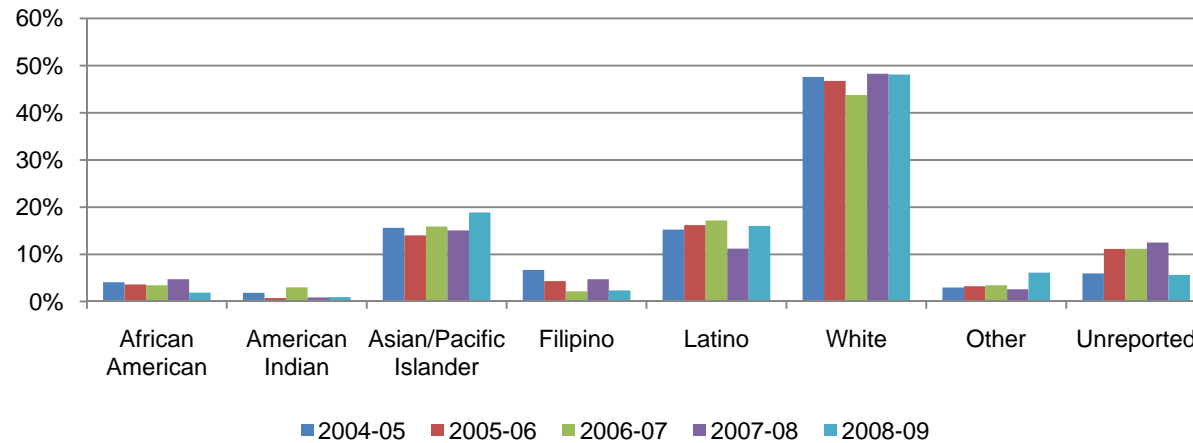


Figure 3.15.4. Miramar College Annual Certificates 29 or Fewer Units by Ethnicity



## Miramar College Section III: Student Outcomes (Annual Awards Conferred)

Table 3.15. Miramar College Awards by Ethnicity

		2004-05		2005-06		2006-07		2007-08		2008-09		% Change 04/05-08/09	College Average 04/05-08/09	All Colleges Average 04/05- 08/09
AA/AS Degree	African American	22	4%	21	4%	24	5%	25	6%	23	4%	5%	4%	9%
	American Indian	1	0%	5	1%	6	1%	2	0%	5	1%	400%	1%	1%
	Asian/Pacific Islander	102	17%	80	14%	79	17%	77	17%	94	17%	-8%	16%	7%
	Filipino	88	15%	95	17%	65	14%	59	13%	53	10%	-40%	14%	18%
	Latino	57	10%	69	12%	54	11%	52	12%	68	12%	19%	11%	40%
	White	254	42%	229	40%	184	39%	186	41%	229	42%	-10%	41%	40%
	Other	23	4%	19	3%	22	5%	20	4%	23	4%	0%	4%	4%
	Unreported	52	9%	50	9%	39	8%	31	7%	51	9%	-2%	8%	9%
	<b>Total</b>	<b>599</b>	<b>100%</b>	<b>568</b>	<b>100%</b>	<b>473</b>	<b>100%</b>	<b>452</b>	<b>100%</b>	<b>546</b>	<b>100%</b>	<b>-9%</b>	<b>100%</b>	<b>100%</b>
Certificate 60 or More Units	African American	0	0%	0	0%	0	0%	0	0%	0	0%	0%	0%	4%
	American Indian	0	0%	0	0%	0	0%	0	0%	0	0%	0%	0%	0%
	Asian/Pacific Islander	0	0%	0	0%	0	0%	0	0%	0	0%	0%	0%	14%
	Filipino	0	0%	0	0%	0	0%	0	0%	0	0%	0%	0%	10%
	Latino	0	0%	0	0%	0	0%	0	0%	0	0%	0%	0%	14%
	White	2	100%	0	0%	0	0%	0	0%	0	0%	-100%	100%	40%
	Other	0	0%	0	0%	0	0%	0	0%	0	0%	0%	0%	1%
	Unreported	0	0%	0	0%	0	0%	0	0%	0	0%	0%	0%	18%
	<b>Total</b>	<b>2</b>	<b>100%</b>	<b>0</b>	<b>0%</b>	<b>0</b>	<b>0%</b>	<b>0</b>	<b>0%</b>	<b>0</b>	<b>0%</b>	<b>-100%</b>	<b>100%</b>	<b>100%</b>

Source: SDCCD Information System

## Miramar College Section III: Student Outcomes (Annual Awards Conferred)

Table 3.15. Miramar College Awards by Ethnicity (Continued)

		2004-05		2005-06		2006-07		2007-08		2008-09		% Change 04/05-08/09	College Average 04/05-08/09	All Colleges Average 04/05-08/09
Certificate 30 to 59 Units	African American	4	3%	8	5%	7	6%	5	4%	12	8%	200%	5%	8%
	American Indian	2	1%	3	2%	3	3%	1	1%	2	1%	0%	2%	1%
	Asian/Pacific Islander	14	10%	16	10%	15	13%	15	12%	23	15%	64%	12%	12%
	Filipino	9	7%	12	8%	7	6%	7	6%	9	6%	0%	6%	5%
	Latino	18	13%	22	14%	16	14%	18	15%	20	13%	11%	14%	18%
	White	68	50%	75	49%	54	47%	63	51%	62	41%	-9%	47%	45%
	Other	9	7%	3	2%	2	2%	5	4%	7	5%	-22%	4%	3%
	Unreported	11	8%	15	10%	12	10%	9	7%	16	11%	45%	9%	8%
	<b>Total</b>	<b>135</b>	<b>100%</b>	<b>154</b>	<b>100%</b>	<b>116</b>	<b>100%</b>	<b>123</b>	<b>100%</b>	<b>151</b>	<b>100%</b>	<b>12%</b>	<b>100%</b>	<b>100%</b>
Certificate 29 or Fewer Units	African American	11	4%	10	4%	8	3%	11	5%	4	2%	-64%	4%	8%
	American Indian	5	2%	2	1%	7	3%	2	1%	2	1%	-60%	1%	1%
	Asian/Pacific Islander	42	16%	39	14%	37	16%	35	15%	40	19%	-5%	16%	13%
	Filipino	18	7%	12	4%	5	2%	11	5%	5	2%	-72%	4%	4%
	Latino	41	15%	45	16%	40	17%	26	11%	34	16%	-17%	15%	23%
	White	128	48%	130	47%	102	44%	112	48%	102	48%	-20%	47%	41%
	Other	8	3%	9	3%	8	3%	6	3%	13	6%	63%	4%	4%
	Unreported	16	6%	31	11%	26	11%	29	13%	12	6%	-25%	9%	7%
	<b>Total</b>	<b>269</b>	<b>100%</b>	<b>278</b>	<b>100%</b>	<b>233</b>	<b>100%</b>	<b>232</b>	<b>100%</b>	<b>212</b>	<b>100%</b>	<b>-21%</b>	<b>100%</b>	<b>100%</b>

Source: SDCCD Information System

## Miramar College Section III: Student Outcomes (Annual Awards Conferred)

**Annual Awards Conferred by Age:** Approximately two-thirds of the total number of associate degrees and 100% of the certificates requiring 60 or more units awarded between 2004/05 and 2008/09 were to students between ages 18-29 years old on average. Students between ages 25 and 29 years old consistently displayed a trend of receiving approximately one-quarter or more of the awards within each award category. Students between ages 18-24 years old were overrepresented in the number of awards received at Miramar College when compared to the same age group of all colleges in the district. However, students ages 30-39 showed the greatest disparity in the number of awards received between 2004/05 and 2008/09.

Figure 3.16.1. Miramar College Annual AA/AS Degrees by Age

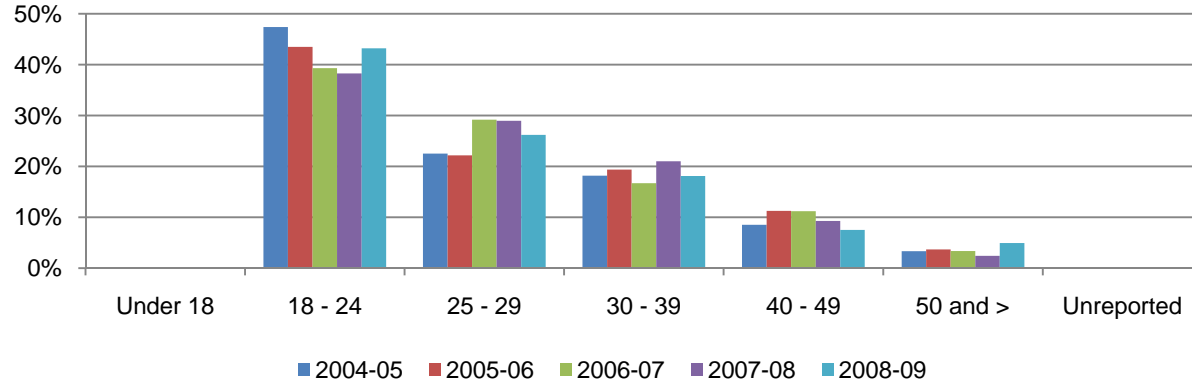
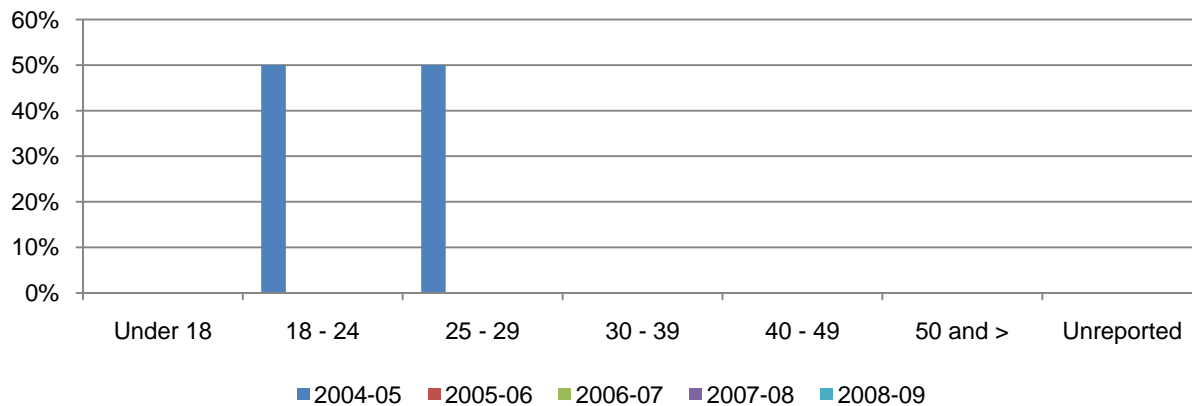


Figure 3.16.2. Miramar College Annual Certificates 60 or More Units by Age



## Miramar College Section III: Student Outcomes (Annual Awards Conferred)

Figure 3.16.3. Miramar College Annual Certificates 30 to 59 Units by Age

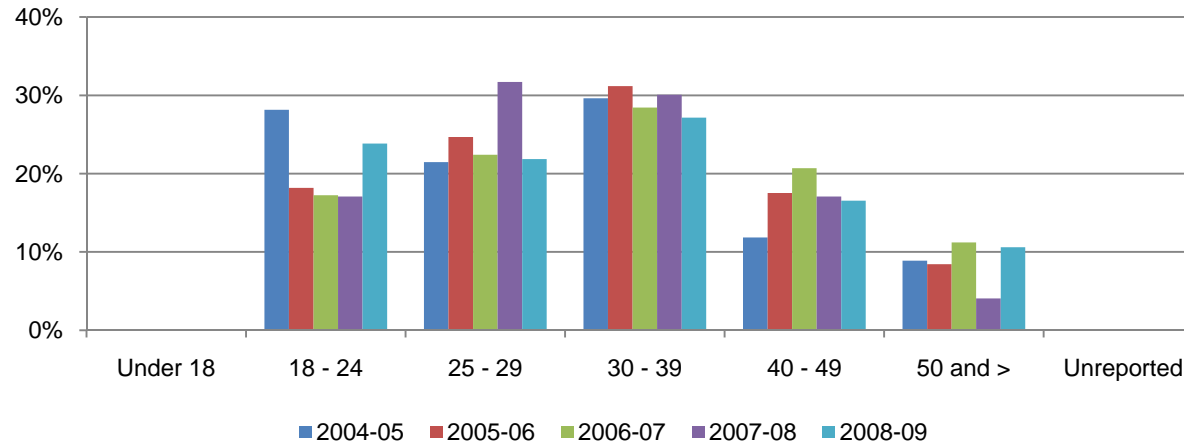
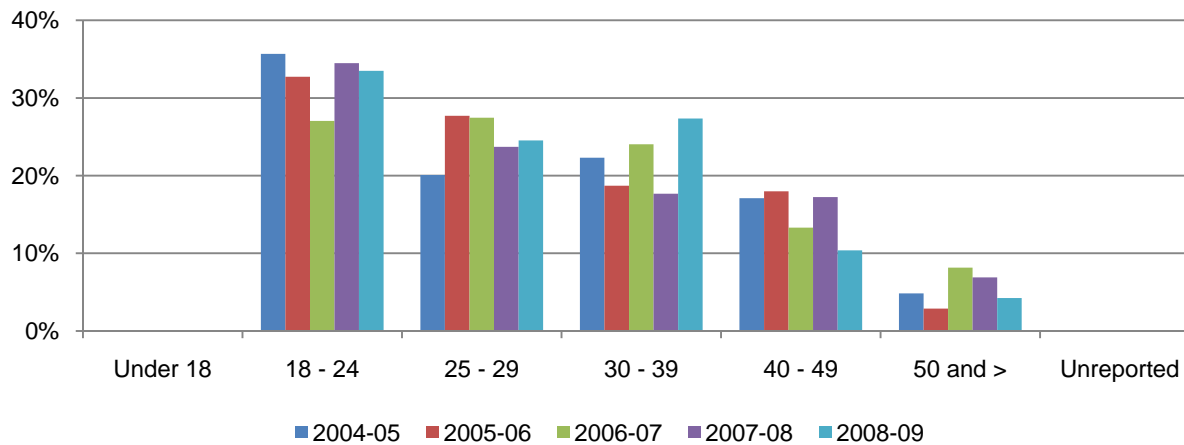


Figure 3.16.4. Miramar College Annual Certificates 29 or Fewer Units by Age



## Miramar College Section III: Student Outcomes (Annual Awards Conferred)

Table 3.16. Miramar College Awards by Age

		2004-05		2005-06		2006-07		2007-08		2008-09		% Change 04/05-08/09	College Average 04/05-08/09	All Colleges Average 04/05-08/09
AA/AS Degree	Under 18	0	0%	0	0%	1	0%	0	0%	0	0%	0%	0%	0%
	18 - 24	284	47%	247	43%	186	39%	173	38%	236	43%	-17%	43%	40%
	25 - 29	135	23%	126	22%	138	29%	131	29%	143	26%	6%	26%	26%
	30 - 39	109	18%	110	19%	79	17%	95	21%	99	18%	-9%	19%	20%
	40 - 49	51	9%	64	11%	53	11%	42	9%	41	8%	-20%	10%	10%
	50 and >	20	3%	21	4%	16	3%	11	2%	27	5%	35%	4%	5%
	Unreported	0	0%	0	0%	0	0%	0	0%	0	0%	0%	0%	0%
	<b>Total</b>	<b>599</b>	<b>100%</b>	<b>568</b>	<b>100%</b>	<b>473</b>	<b>100%</b>	<b>452</b>	<b>100%</b>	<b>546</b>	<b>100%</b>	<b>-9%</b>	<b>100%</b>	<b>100%</b>
Certificate 60 or More Units	Under 18	0	0%	0	0%	0	0%	0	0%	0	0%	0%	0%	0%
	18 - 24	1	50%	0	0%	0	0%	0	0%	0	0%	-100%	50%	18%
	25 - 29	1	50%	0	0%	0	0%	0	0%	0	0%	-100%	50%	26%
	30 - 39	0	0%	0	0%	0	0%	0	0%	0	0%	0%	0%	33%
	40 - 49	0	0%	0	0%	0	0%	0	0%	0	0%	0%	0%	19%
	50 and >	0	0%	0	0%	0	0%	0	0%	0	0%	0%	0%	4%
	Unreported	0	0%	0	0%	0	0%	0	0%	0	0%	0%	0%	0%
	<b>Total</b>	<b>2</b>	<b>100%</b>	<b>0</b>	<b>0%</b>	<b>0</b>	<b>0%</b>	<b>0</b>	<b>0%</b>	<b>0</b>	<b>0%</b>	<b>-100%</b>	<b>100%</b>	<b>100%</b>

Source: SDCCD Information System

## Miramar College Section III: Student Outcomes (Annual Awards Conferred)

Table 3.16. Miramar College Awards by Age (Continued)

		2004-05		2005-06		2006-07		2007-08		2008-09		% Change 04/05-08/09	College Average 04/05-08/09	All Colleges Average 04/05-08/09
Certificate 30 to 59 Units	Under 18	0	0%	0	0%	0	0%	0	0%	0	0%	0%	0%	0%
	18 - 24	38	28%	28	18%	20	17%	21	17%	36	24%	-5%	21%	19%
	25 - 29	29	21%	38	25%	26	22%	39	32%	33	22%	14%	24%	22%
	30 - 39	40	30%	48	31%	33	28%	37	30%	41	27%	3%	29%	29%
	40 - 49	16	12%	27	18%	24	21%	21	17%	25	17%	56%	17%	20%
	50 and >	12	9%	13	8%	13	11%	5	4%	16	11%	33%	9%	10%
	Unreported	0	0%	0	0%	0	0%	0	0%	0	0%	0%	0%	0%
	<b>Total</b>	<b>135</b>	<b>100%</b>	<b>154</b>	<b>100%</b>	<b>116</b>	<b>100%</b>	<b>123</b>	<b>100%</b>	<b>151</b>	<b>100%</b>	<b>12%</b>	<b>100%</b>	<b>100%</b>
Certificate 29 or Fewer Units	Under 18	0	0%	0	0%	0	0%	0	0%	0	0%	0%	0%	0%
	18 - 24	96	36%	91	33%	63	27%	80	34%	71	33%	-26%	33%	22%
	25 - 29	54	20%	77	28%	64	27%	55	24%	52	25%	-4%	25%	25%
	30 - 39	60	22%	52	19%	56	24%	41	18%	58	27%	-3%	22%	28%
	40 - 49	46	17%	50	18%	31	13%	40	17%	22	10%	-52%	15%	17%
	50 and >	13	5%	8	3%	19	8%	16	7%	9	4%	-31%	5%	8%
	Unreported	0	0%	0	0%	0	0%	0	0%	0	0%	0%	0%	0%
	<b>Total</b>	<b>269</b>	<b>100%</b>	<b>278</b>	<b>100%</b>	<b>233</b>	<b>100%</b>	<b>232</b>	<b>100%</b>	<b>212</b>	<b>100%</b>	<b>-21%</b>	<b>100%</b>	<b>100%</b>

Source: SDCCD Information System



## Miramar College Section III: Student Outcomes (Annual Transfer Volume)

**Annual Transfer Volume:** The annual transfer volume for Miramar College increased 65%, from 262 in 2004/05 to 431 in 2008/09.

Figure 3.17. Miramar College Overall Annual Transfers

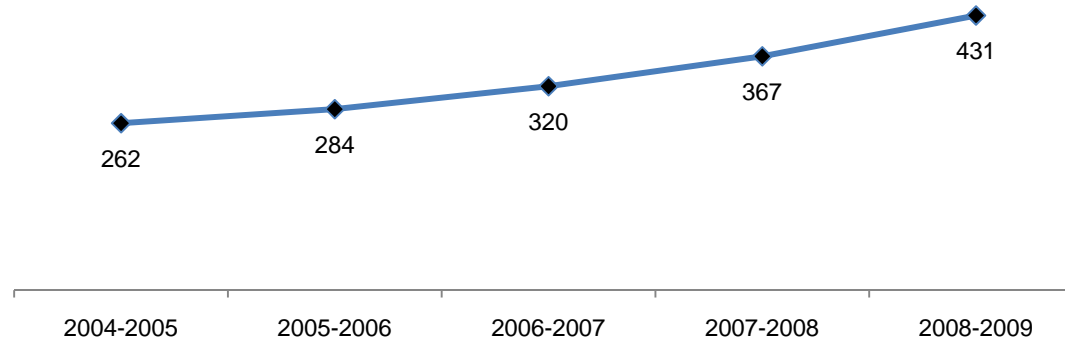


Table 3.17. Miramar College Overall Annual Transfers

	2004-05	2005-06	2006-07	2007-08	2008-09	% Change 04/05-08/09
<b>Total</b>	<b>262</b>	<b>284</b>	<b>320</b>	<b>367</b>	<b>431</b>	<b>65%</b>

Source: SDCCD Information System

## Miramar College Section III: Student Outcomes (Annual Transfer Volume)

**Annual Transfer Volume by Gender:** Between 2004/05 and 2008/09, on average, of those who transferred from Miramar College, 50% were female students and 50% were male students. The transfer volume for both male and female students increased between 2004/05 and 2008/09 (41% and 90%, respectively).

Figure 3.18. Miramar College Annual Transfers by Gender

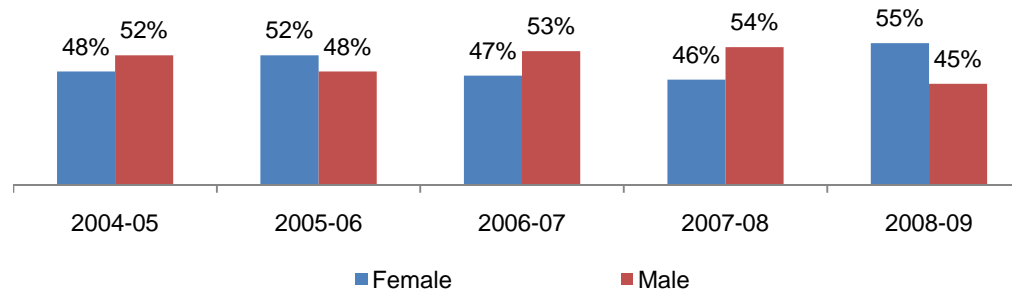


Figure 3.18. Miramar College Annual Transfers by Gender

	2004-05		2005-06		2006-07		2007-08		2008-09		% Change 04/05-08/09	College Average 04/05- 08/09	All Colleges Average 04/05-08/09
Female	125	48%	148	52%	150	47%	168	46%	238	55%	90%	50%	52%
Male	137	52%	136	48%	170	53%	197	54%	193	45%	41%	50%	48%
Unreported	0	0%	0	0%	0	0%	2	1%	0	0%	0%	0%	0%
<b>Total</b>	<b>262</b>	<b>100%</b>	<b>284</b>	<b>100%</b>	<b>320</b>	<b>100%</b>	<b>367</b>	<b>100%</b>	<b>431</b>	<b>100%</b>	<b>65%</b>	<b>100%</b>	<b>100%</b>

Source: SDCCD Information System

## Miramar College Section III: Student Outcomes (Annual Transfer Volume)

**Annual Transfer Volume by Ethnicity:** Of all the students who transferred from Miramar College, approximately half were White students (44%) on average. Ethnic groups with the second and third highest transfer volumes were Asian/Pacific Islanders students (17%) and Filipino students (12%) between 2004/05 and 2008/09. Most of the ethnic groups displayed an increased trend in transfer volume, with the exception of American Indian students, which displayed a 50% decrease. Latino students increased 168% in transfer volume, from 19 in 2004/05 to 51 in 2008/09.

Figure 3.19. Miramar College Annual Transfers by Ethnicity

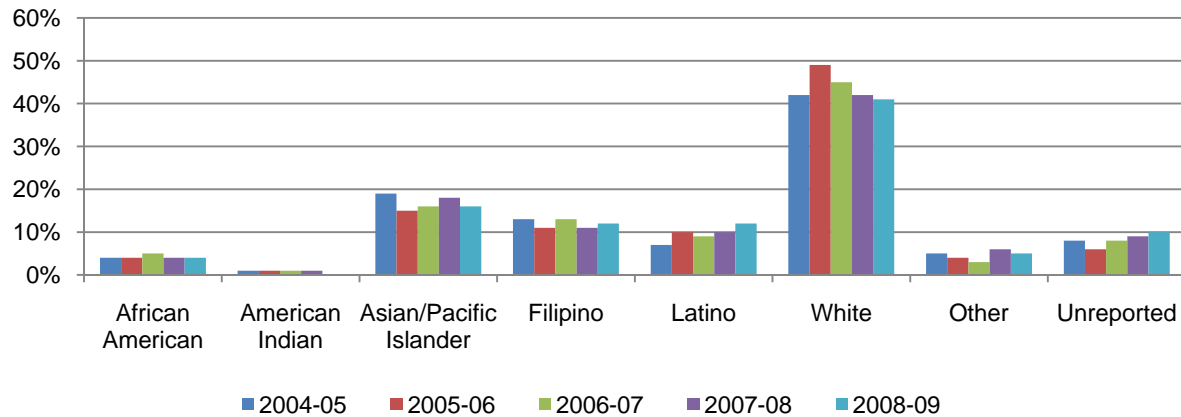


Table 3.19. Miramar College Annual Transfers by Ethnicity

	2004-05		2005-06		2006-07		2007-08		2008-09		% Change 04/05-08/09	College Average 04/05-08/09	All Colleges Average 04/05-08/09
	Count	%	Count	%	Count	%	Count	%	Count	%			
African American	11	4%	11	4%	15	5%	13	4%	16	4%	45%	4%	4%
American Indian	2	1%	3	1%	3	1%	3	1%	1	0%	-50%	1%	1%
Asian/Pacific Islander	49	19%	42	15%	52	16%	65	18%	67	16%	37%	17%	13%
Filipino	35	13%	32	11%	41	13%	42	11%	53	12%	51%	12%	5%
Latino	19	7%	28	10%	30	9%	36	10%	51	12%	168%	10%	14%
White	111	42%	140	49%	144	45%	155	42%	178	41%	60%	44%	50%
Other	13	5%	11	4%	11	3%	21	6%	20	5%	54%	5%	3%
Unreported	22	8%	17	6%	24	8%	32	9%	45	10%	105%	8%	10%
<b>Total</b>	<b>262</b>	<b>100%</b>	<b>284</b>	<b>100%</b>	<b>320</b>	<b>100%</b>	<b>367</b>	<b>100%</b>	<b>431</b>	<b>100%</b>	<b>65%</b>	<b>100%</b>	<b>100%</b>

Source: SDCCD Information System

## Miramar College Section III: Student Outcomes (Annual Transfer Volume)

**Annual Transfer Volume by Age:** Of those who transferred from Miramar College, on average, the greatest proportions comprised students ages 18-24 (64%), students between ages 25 and 29 years old (23%), and students ages 30 to 39 years old (10%) between 2004/05 and 2008/09. Students who were 50 years and older displayed a 50% decrease in transfer volume, while students ages 25-29 showed a 162% increase in transfer volume between 2004/05 and 2008/09.

Figure 3.20. Miramar College Annual Transfers by Age

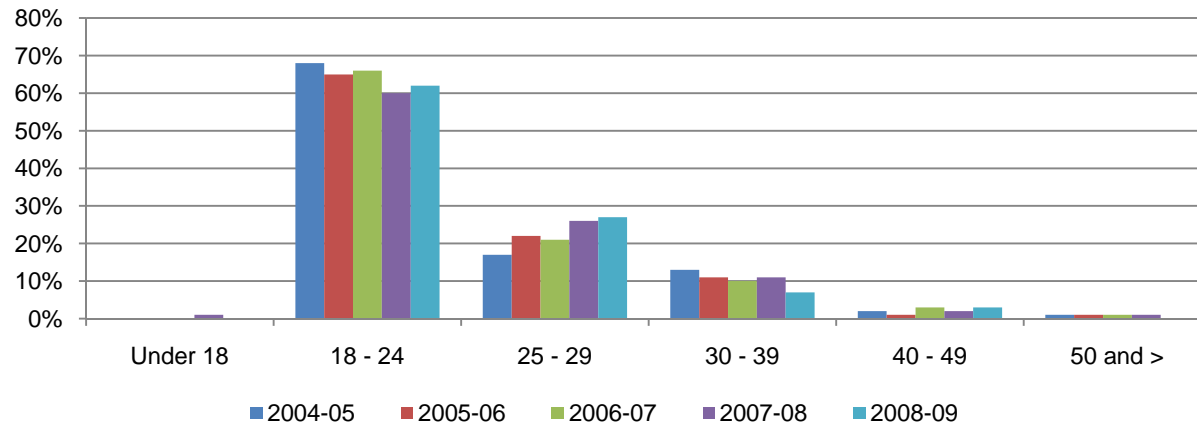


Table 3.20. Miramar College Annual Transfers by Age

	2004-05		2005-06		2006-07		2007-08		2008-09		% Change 04/05-08/09	College Average 04/05-08/09	All Colleges Average 04/05-08/09
	Count	%	Count	%	Count	%	Count	%	Count	%			
Under 18	0	0%	1	0%	0	0%	2	1%	0	0%	0%	0%	0%
18 - 24	177	68%	186	65%	210	66%	221	60%	268	62%	51%	64%	66%
25 - 29	45	17%	62	22%	68	21%	96	26%	118	27%	162%	23%	23%
30 - 39	33	13%	30	11%	31	10%	39	11%	32	7%	-3%	10%	8%
40 - 49	5	2%	3	1%	9	3%	7	2%	12	3%	140%	2%	2%
50 and >	2	1%	2	1%	2	1%	2	1%	1	0%	-50%	1%	0%
Unreported	0	0%	0	0%	0	0%	0	0%	0	0%	0%	0%	0%
<b>Total</b>	<b>262</b>	<b>100%</b>	<b>284</b>	<b>100%</b>	<b>320</b>	<b>100%</b>	<b>367</b>	<b>100%</b>	<b>431</b>	<b>100%</b>	<b>65%</b>	<b>100%</b>	<b>100%</b>

Source: SDCCD Information System

## Miramar College Section III: Student Outcomes (Annual Transfer Volume)

**Annual Transfer Volume by CSU-UC/Private (In-State)/Out-of-State:** On average, nearly half of the Miramar College transfer volume were students who transferred into the California State University system (CSU) (47%), followed by the University of California system (UC) (22%), Out-of-State institutions (21%), and In-State private institutions (10%). Students who transferred from Miramar College to the UC system increased 92% in transfer volume, from 59 in 2004/05 to 113 in 2008/09.

Figure 3.21. Miramar College Annual Transfers by CSU-UC/Private (In-State)/Out-of-State

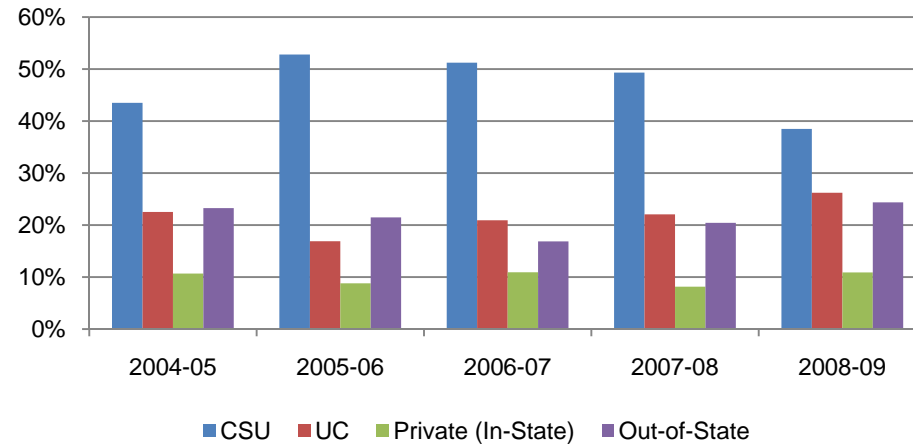


Table 3.21. Miramar College Annual Transfers by CSU-UC/Private (In-State)/Out-of-State

	2004-05		2005-06		2006-07		2007-08		2008-09		% Change 04/05-08/09	College Average 04/05-08/09	All Colleges Average 04/05-08/09
CSU	114	44%	150	53%	164	51%	181	49%	166	39%	46%	47%	48%
UC	59	23%	48	17%	67	21%	81	22%	113	26%	92%	22%	22%
Private (In-State)	28	11%	25	9%	35	11%	30	8%	47	11%	68%	10%	10%
Out-of-State	61	23%	61	21%	54	17%	75	20%	105	24%	72%	21%	20%
<b>Total</b>	<b>262</b>	<b>100%</b>	<b>284</b>	<b>100%</b>	<b>320</b>	<b>100%</b>	<b>367</b>	<b>100%</b>	<b>431</b>	<b>100%</b>	<b>65%</b>	<b>100%</b>	<b>100%</b>

Source: SDCCD Information System

Note: Out-of-State included both public and private 4-year institutions.

## Miramar College Section III: Student Outcomes (Annual Transfer Volume)

**Annual Transfers by CSU/UC:** Of the total Miramar College transfer volume (see Table 3.17), 69% transferred into either the California State University (CSU) or University of California (UC) systems on average (47% and 22%, respectively). Of the total number of students who transferred to CSU or UC systems, the majority of students went to CSU (68%) and about one-third went to UC (32%) on average. Both the CSU and UC systems showed an increased trend in the number of students who transferred from Miramar College (46% and 92%, respectively) to their respective systems between 2004/05 and 2008/09.

Figure 3.22. Miramar College Annual Transfers by CSU/UC

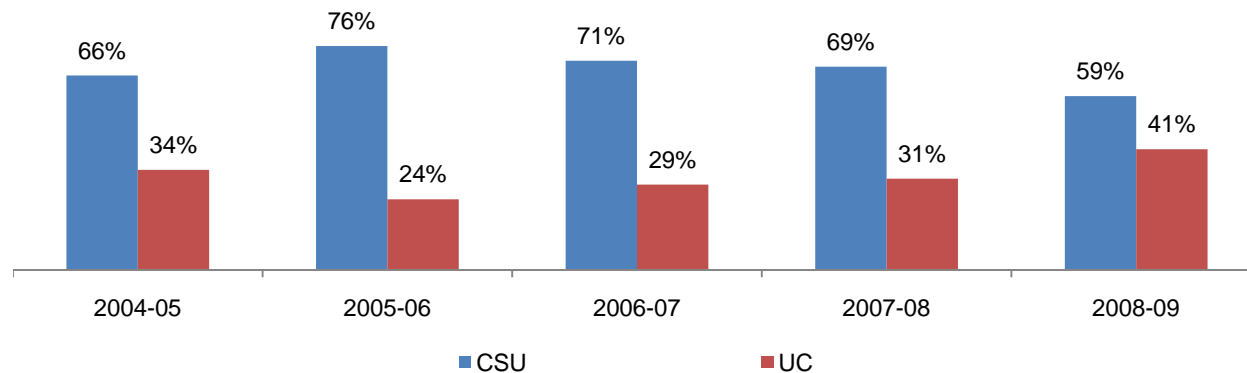


Table 3.22. Miramar College Annual Transfers by CSU/UC

	2004-05		2005-06		2006-07		2007-08		2008-09		% Change 04/05-08/09	College Average 04/05-08/09	All Colleges Average 04/05-08/09
CSU	114	66%	150	76%	164	71%	181	69%	166	59%	46%	68%	68%
UC	59	34%	48	24%	67	29%	81	31%	113	41%	92%	32%	32%
<b>Total</b>	<b>173</b>	<b>100%</b>	<b>198</b>	<b>100%</b>	<b>231</b>	<b>100%</b>	<b>262</b>	<b>100%</b>	<b>279</b>	<b>100%</b>	<b>61%</b>	<b>100%</b>	<b>100%</b>

Source: SDCCD Information System

## Miramar College Section III: Student Outcomes (Annual Transfer Volume)

**Annual Transfer Volume by Institution Type:** Of those who transferred from Miramar College, 20% transferred to a private institution and 80% transferred to a public institution on average. Both public and private institutions displayed an increased trend in the number of students who transferred from Miramar College (61% and 77%, respectively) to their respective institutions between 2004/05 and 2008/09.

Figure 3.23. Miramar College Annual Transfers by Institution Type

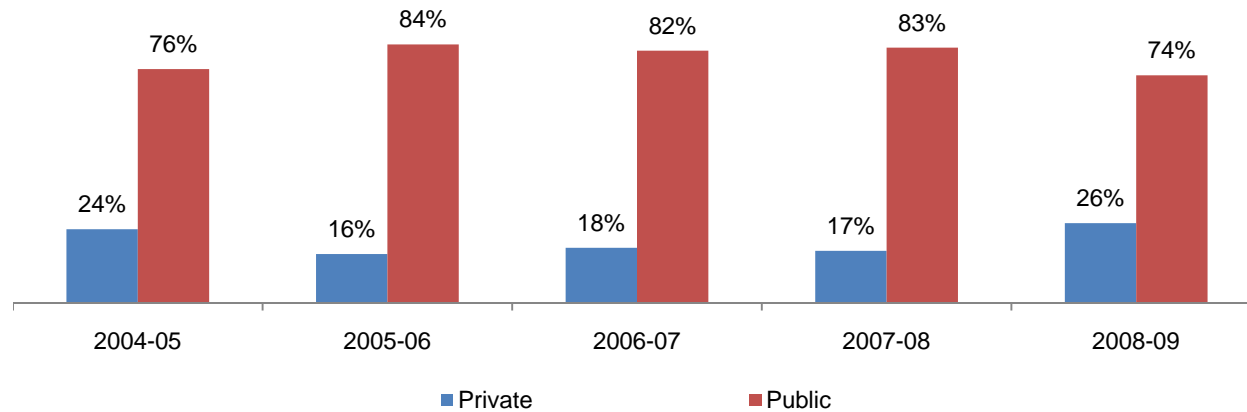


Table 3.23. Miramar College Annual Transfers by Institution Type

	2004-05		2005-06		2006-07		2007-08		2008-09		% Change 04/05-08/09	College Average 04/05-08/09	All Colleges Average 04/05-08/09
Private	62	24%	45	16%	59	18%	64	17%	110	26%	77%	20%	19%
Public	200	76%	239	84%	261	82%	303	83%	321	74%	61%	80%	81%
<b>Total</b>	<b>262</b>	<b>100%</b>	<b>284</b>	<b>100%</b>	<b>320</b>	<b>100%</b>	<b>367</b>	<b>100%</b>	<b>431</b>	<b>100%</b>	<b>65%</b>	<b>100%</b>	<b>100%</b>

Source: SDCCD Information System

Note: Public and private included both Out-of-State and In-State 4-year institutions.

**Section IV**  
**Productivity and Efficiency**



## **Miramar College Section IV: Productivity and Efficiency**

---

This section of the Fact Book contains information on productivity and efficiency measures. The following describes in detail each of the measures:

- 1) FTES. The first measure reported in this section is a measure of productivity. FTES is a calculation of full-time equivalent students enrolled as of official census and is based on the total number of student contact hours.
- 2) Enrollments. The second measure in this section of the report is also a measure of productivity. Enrollments are duplicated counts of students. The measure counts all of the classes in which a single student is enrolled compared to unduplicated headcount which counts the student only once regardless of the number of classes he/she may be enrolled in.
- 3) Fill Rates. The third measure reported in this section is a measure of efficiency. Fill rates are a calculation of the total enrollment capacity of a class over the total enrollments in the class.
- 4) Load. The fourth measure reported in this section is a measure of efficiency. Load is a calculation of the ratio of Weekly Student Contact Hours (WSCH) to Full-time Equivalent Faculty (WSCH/FTEF).

## Miramar College Section IV: Productivity and Efficiency (FTES)

**Annual FTES:** Between 2004/05 and 2008/09, Miramar College showed a 13% increase in FTES. For credit FTES, there was a 13% increase, from 6,453 in 2004/05 to 7,285 in 2008/09. College non-credit FTES remained relatively stable between 2004/05 to 2008/09.

Figure 4.1. Miramar College Annual FTES

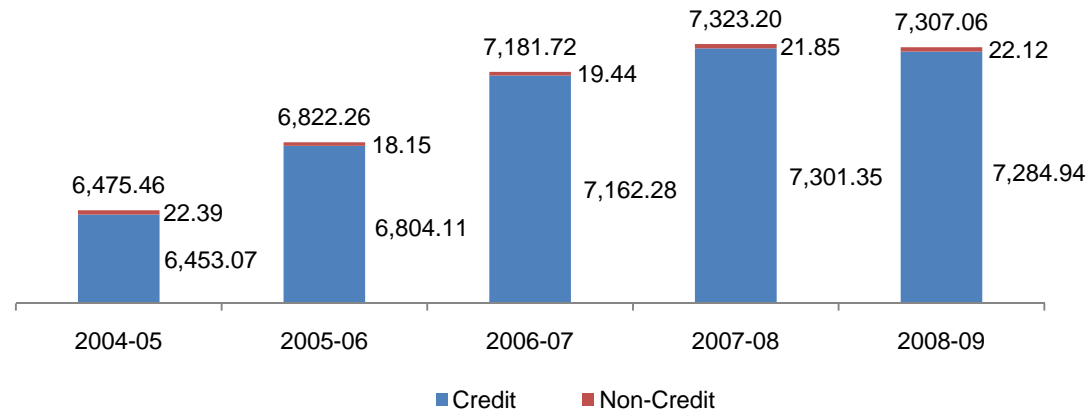


Table 4.1. Miramar College Annual FTES

	2004-05	2005-06	2006-07	2007-08	2008-09
Credit	6,453.07	6,804.11	7,162.28	7,301.35	7,284.94
Non-Credit	22.39	18.15	19.44	21.85	22.12
<b>Total</b>	<b>6,475.46</b>	<b>6,822.26</b>	<b>7,181.72</b>	<b>7,323.20</b>	<b>7,307.06</b>

Source: SDCCD Information System

## Miramar College Section IV: Productivity and Efficiency (Enrollments)

**Enrollments:** The enrollment trend for the online mode of instruction increased tremendously for summer (191%), fall (114%), and spring (80%) terms between 2004/05 and 2008/09. The on campus mode of instruction enrollment increased between 2004/05 and 2008/09 for the fall term (3%), decreased for the summer (4%) term, and remained relatively stable for the spring term. The rate of change in enrollment trends for the general student population of all colleges in the district were lower compared to the rate of change in enrollment trends for the general student population of Miramar College across the summer, fall, and spring terms.

Figure 4.2.1. Miramar College Enrollments (Summer)

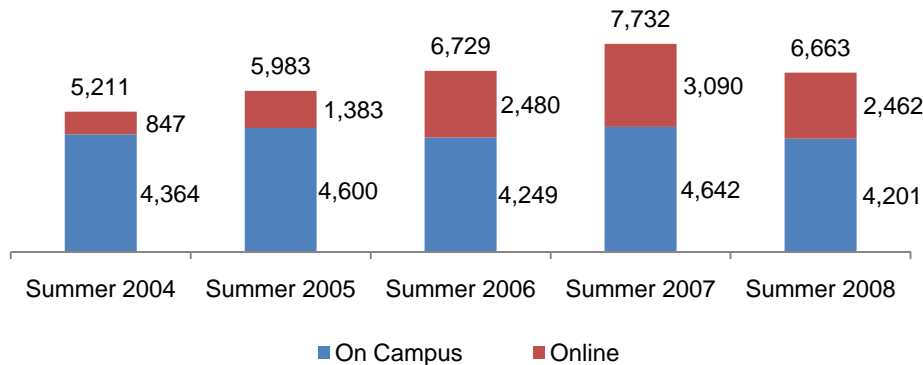


Figure 4.2.2. Miramar College Enrollments (Fall)

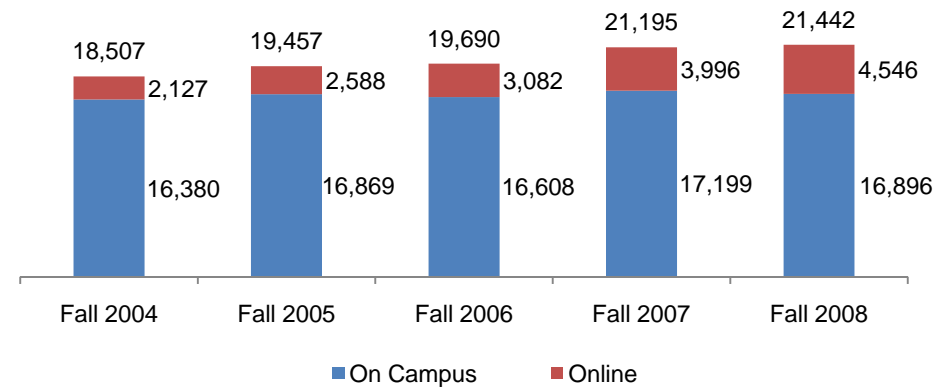
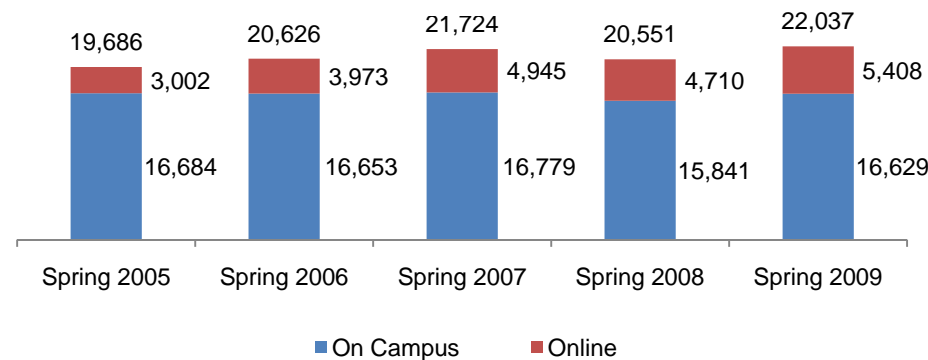


Figure 4.2.3. Miramar College Enrollments (Spring)



## Miramar College Section IV: Productivity and Efficiency (Fill Rates)

**Fill Rates:** The overall fill rates for Miramar College were the highest for the fall term, on average, when compared to spring and summer cohorts (84% vs. 82% and 76%, respectively) between 2004/05 and 2008/09. Overall fill rates for all colleges in the district followed the same pattern. On average, fill rates were the highest for the online mode of instruction across summer, fall, and spring terms (79%, 84%, and 84%) compared to the on campus mode of instruction (summer 74%, fall 83%, and, spring 81% terms). Miramar College had overall higher fill rates, on average, compared to the fill rates of all colleges in the district across all modes of instruction.

Figure 4.3.1. Miramar College Fill Rates (Summer)

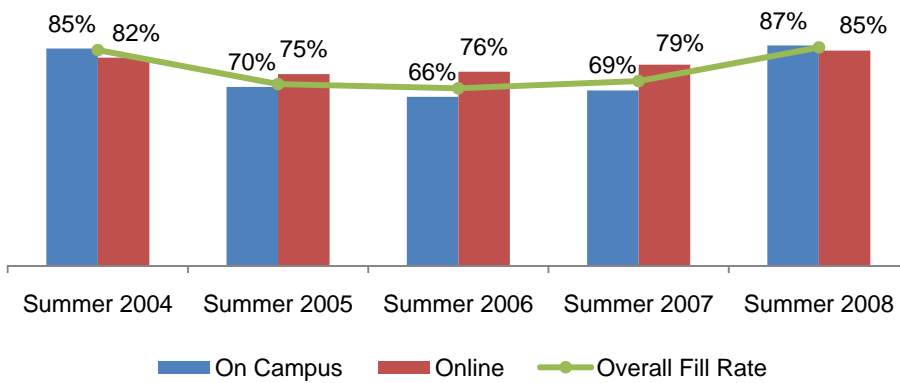


Figure 4.3.2. Miramar College Fill Rates (Fall)

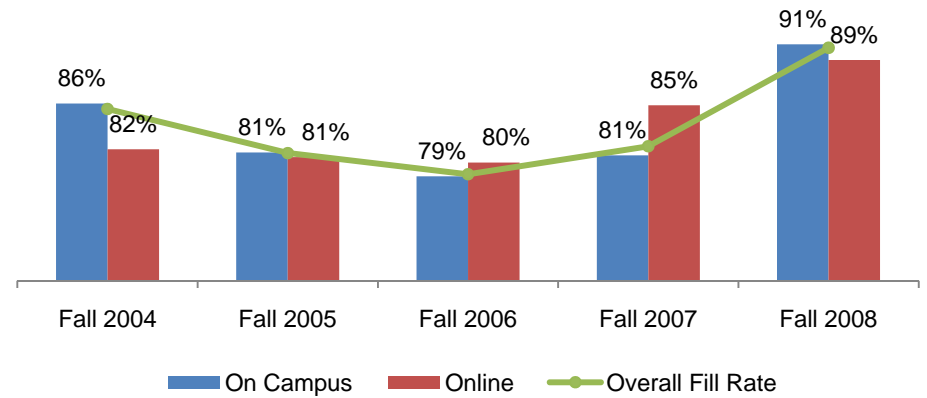
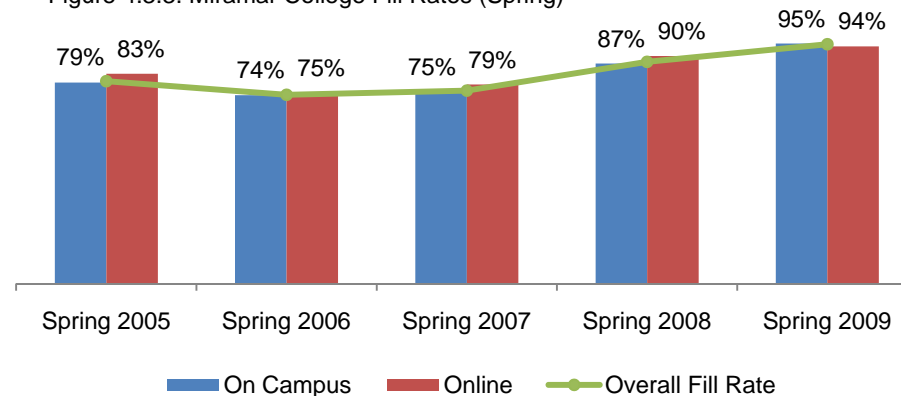


Figure 4.3.3. Miramar College Fill Rates (Spring)



## Miramar College Section IV: Productivity and Efficiency (Fill Rates)

Table 4.2. Miramar College Enrollments and Fill Rates

Term	On Campus			Online			Campus Total			All Colleges Total		
	Enrollment	Capacity	Fill Rate	Enrollment	Capacity	Fill Rate	Enrollment	Capacity	Fill Rate	Enrollment	Capacity	Fill Rate
Summer 2004	4,364	5,110	85%	847	1,035	82%	5,211	6,145	85%	28,127	35,394	79%
Summer 2005	4,600	6,540	70%	1,383	1,835	75%	5,983	8,375	71%	29,046	41,844	69%
Summer 2006	4,249	6,394	66%	2,480	3,249	76%	6,729	9,643	70%	31,197	49,442	63%
Summer 2007	4,642	6,735	69%	3,090	3,909	79%	7,732	10,644	73%	34,065	52,335	65%
Summer 2008	4,201	4,851	87%	2,462	2,909	85%	6,663	7,760	86%	31,375	40,401	78%
<b>Total &amp; Average</b>	<b>22,056</b>	<b>29,630</b>	<b>74%</b>	<b>10,262</b>	<b>12,937</b>	<b>79%</b>	<b>32,318</b>	<b>42,567</b>	<b>76%</b>	<b>153,810</b>	<b>219,416</b>	<b>70%</b>
Fall 2004	16,380	19,129	86%	2,127	2,607	82%	18,507	21,736	85%	104,531	127,010	82%
Fall 2005	16,869	20,747	81%	2,588	3,199	81%	19,457	23,946	81%	102,297	130,560	78%
Fall 2006	16,608	20,969	79%	3,082	3,832	80%	19,690	24,801	79%	105,509	139,987	75%
Fall 2007	17,199	21,217	81%	3,996	4,675	85%	21,195	25,892	82%	109,290	137,470	80%
Fall 2008	16,896	18,601	91%	4,546	5,082	89%	21,442	23,683	91%	111,704	130,364	86%
<b>Total &amp; Average</b>	<b>83,952</b>	<b>100,663</b>	<b>83%</b>	<b>16,339</b>	<b>19,395</b>	<b>84%</b>	<b>100,291</b>	<b>120,058</b>	<b>84%</b>	<b>533,331</b>	<b>665,391</b>	<b>80%</b>
Spring 2005	16,684	21,030	79%	3,002	3,626	83%	19,686	24,656	80%	106,671	138,884	77%
Spring 2006	16,653	22,414	74%	3,973	5,287	75%	20,626	27,701	74%	106,516	146,708	73%
Spring 2007	16,779	22,249	75%	4,945	6,294	79%	21,724	28,543	76%	109,724	152,720	72%
Spring 2008	15,841	18,247	87%	4,710	5,245	90%	20,551	23,492	87%	111,009	139,620	80%
Spring 2009	16,629	17,561	95%	5,408	5,779	94%	22,037	23,340	94%	115,593	130,006	89%
<b>Total &amp; Average</b>	<b>82,586</b>	<b>101,501</b>	<b>81%</b>	<b>22,038</b>	<b>26,231</b>	<b>84%</b>	<b>104,624</b>	<b>127,732</b>	<b>82%</b>	<b>549,513</b>	<b>707,938</b>	<b>78%</b>

Source: SDCCD Information System

*Fill rates are enrollments over the enrollment cap and do not include Positive Attendance, Non-credit, Apprenticeship, In-service or cancelled courses.*

## Miramar College Section IV: Productivity and Efficiency (Load)

**Load:** The Load value for Fall 2004 was greater than the Load values of the other four fall terms. However, the Load value for Spring 2009 was greater than the Load values of the previous four spring terms. Most of the Miramar College Load values were lower compared to the all colleges in the district Load values across the fall and spring terms. The statewide benchmark for Load is 525 for a 17.5 week semester. SDCCD has set an internal benchmark of 557, which is commensurate to its 16.5 week semester.

Figure 4.4.1. Miramar Colleges Fall Load

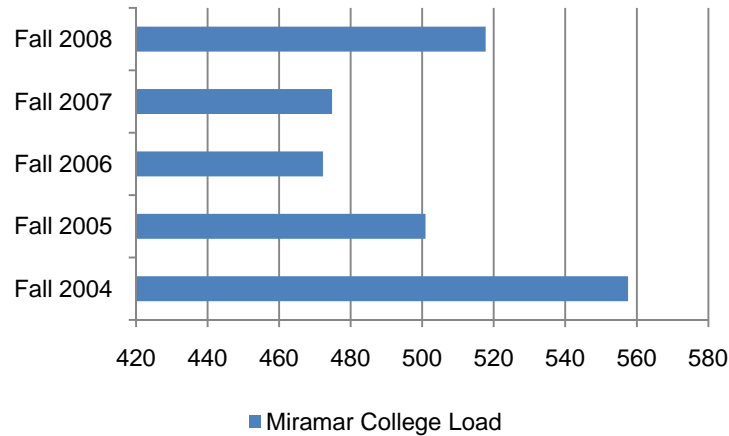


Figure 4.4.2. Miramar Colleges Spring Load

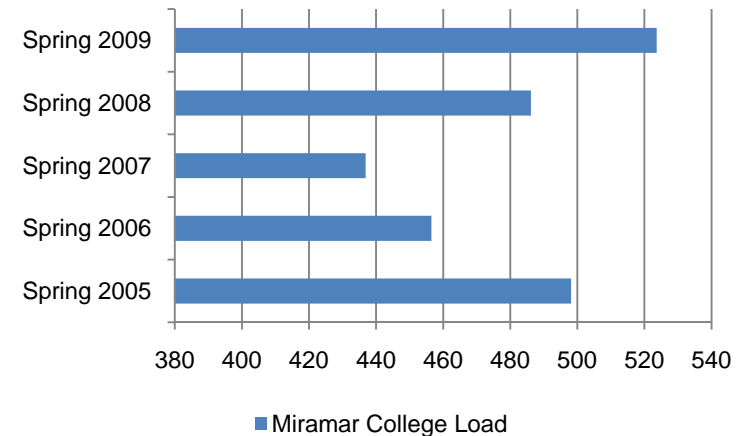


Table 4.4. Miramar Colleges Fall Load

Term	Miramar Load	All Colleges Load
Fall 2004	558	527
Fall 2005	501	492
Fall 2006	472	481
Fall 2007	475	491
Fall 2008	518	527
Spring 2005	498	491
Spring 2006	456	461
Spring 2007	437	452
Spring 2008	486	490
Spring 2009	524	538

Source: SDCCD Information System

**Section V**  
**Human Resources**

## **Miramar College Section V: Human Resources**

---

This section of the Fact Book contains information on the number and classification of employees during the Fall 2008 semester. The information is reported as follows:

- 1) Gender
- 2) Ethnicity
- 3) Employee Classification



## Miramar College Section V: Human Resources

**Fall 2008 Employees by Ethnicity:** There were a total of 785 employees working at Miramar College during Fall 2008. The ethnic breakdown showed that White employees comprised 59% of the total employee population, followed by Asian employees (14%), and Latino employees comprised 11% of the Miramar College workforce (see Figure 5.1.1). Among classified staff, White employees comprised more than one-third (36%) of the classified staff and made up two-thirds of the teaching faculty positions (66%) compared to other ethnic groups (see Table 5.1). White employees comprised more than half of both the management (54%) and supervisory (54%) positions. Asian employees comprised almost one-quarter (23%) of the management positions and 14% of the supervisory positions. Latino employees comprised 8% and 5% of the management and supervisory positions. African American employees constituted 14% of the supervisory positions.

Both Filipino and Latino employee populations (2% and 11%, respectively) at Miramar College were underrepresented relative to the general Filipino and Latino student populations (10% and 16%, respectively) at Miramar College (see Figure 5.1.2). However, the White employee population (59%) at Miramar College was overrepresented relative to the general White student population (41%) at Miramar College. The employee populations of all other ethnic groups at Miramar College were comparable to the general student populations of all other ethnic groups at Miramar College.

Figure 5.1.1. Miramar College Fall 2008 Employees by Ethnicity

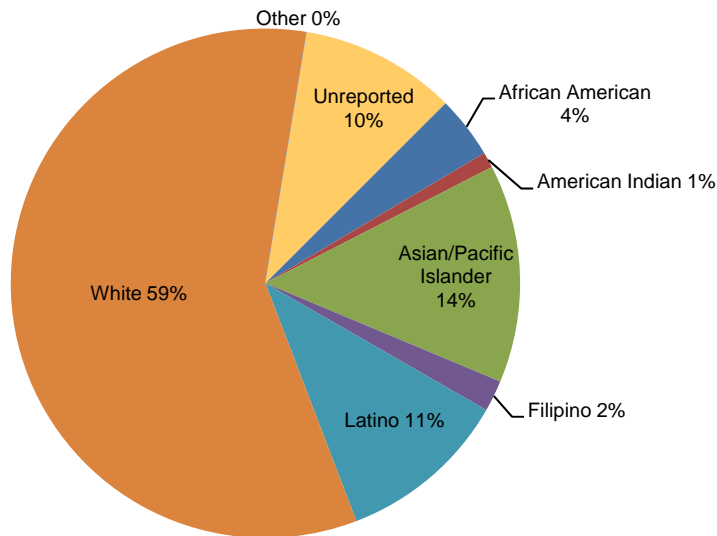
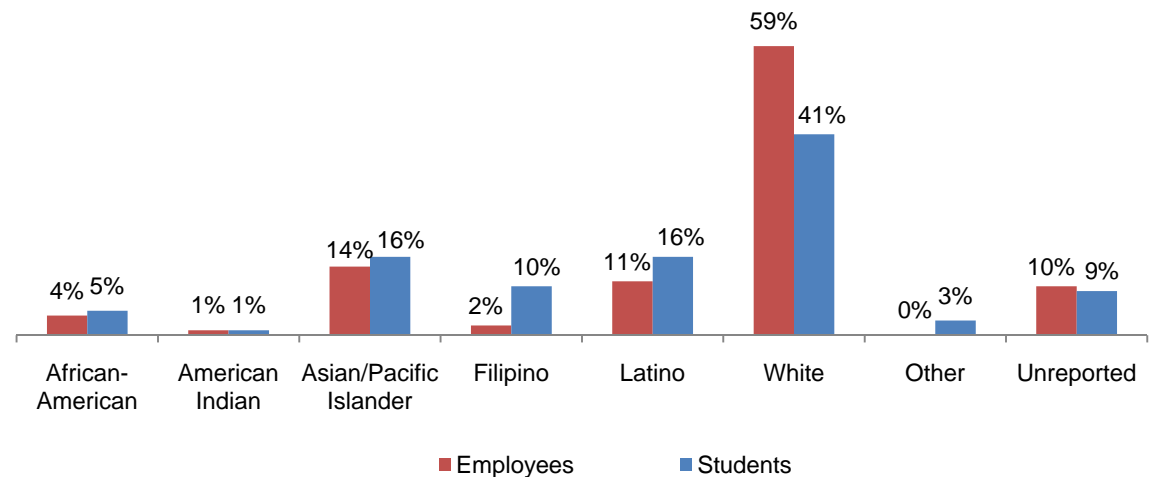


Figure 5.1.2. Miramar College Fall 2008 Employees compared to Students by Ethnicity



## Miramar College Section V: Human Resources

Table 5.1. Miramar College Fall 2008 Employees by Ethnicity

	African American		American Indian		Asian		Filipino		Latino		White		Other		Unreported		Total
Total Employees	31	4%	4	1%	107	14%	12	2%	89	11%	460	59%	1	<1%	81	10%	785
Male	16	4%	3	1%	48	11%	6	1%	44	11%	251	60%	1	<1%	49	12%	418
Female	15	4%	1	<1%	59	16%	6	2%	45	12%	209	57%	-	-	32	9%	367
Classified Staff	6	7%	-	-	25	30%	4	5%	12	14%	30	36%	-	-	6	7%	83
Non-Academic Hourly	3	2%	-	-	39	29%	-	-	8	6%	68	51%	1	1%	14	11%	133
Teaching Faculty	12	3%	4	1%	30	6%	3	1%	58	12%	311	66%	-	-	54	11%	472
Contract	2	2%	1	1%	3	4%	1	1%	7	8%	57	67%	-	-	14	16%	85
Adjunct	10	3%	3	1%	27	7%	2	1%	51	13%	254	66%	-	-	40	10%	387
Counseling Faculty	5	19%	-	-	3	11%	1	4%	7	26%	11	41%	-	-	-	-	27
Contract	4	24%	-	-	1	6%	1	6%	3	18%	8	47%	-	-	-	-	17
Adjunct	1	10%	-	-	2	20%	-	-	4	40%	3	30%	-	-	-	-	10
Library Faculty	-	-	-	-	-	-	-	-	-	-	4	80%	-	-	1	20%	5
Contract	-	-	-	-	-	-	-	-	-	-	1	50%	-	-	1	50%	2
Adjunct	-	-	-	-	-	-	-	-	-	-	3	100%	-	-	-	-	3
Police Officers	-	-	-	-	-	-	-	-	-	-	2	100%	-	-	-	-	2
Community Service Officers	1	33%	-	-	1	33%	-	-	-	-	1	33%	-	-	-	-	3
Management	-	-	-	-	3	23%	-	-	1	8%	7	54%	-	-	2	15%	13
Supervisory Staff	3	14%	-	-	3	14%	2	9%	1	5%	12	54%	-	-	1	5%	22

Source: SDCCD Information System

Table 5.2. Miramar College Employee by Gender and Job Status

Gender		Job Status	
Male	53%	Full-Time/Contract	29%
Female	47%	Hourly/Adjunct	71%

Source: SDCCD Information System

**Section VI**  
**Concluding Remarks**

## Miramar College Section VI: Concluding Remarks

---

*Headcount.* The number of unduplicated students or headcount at Miramar College showed continual increase overall during the five year period reported; 2004 to 2008. In particular, the summer headcount showed marked increase between Summer 2004 and Summer 2008 (36%). Furthermore, the fall headcount and spring headcount showed an increase (13% and 6% respectively) as well. These increases are likely due in part to the downturned economy which frequently spawns renewed interest in retraining or retooling of skills or the learning of a new skill set.

*Demographics.* The student population remained majority male (55% on average) and generally young (65% on average were between 18-29 years old). In regards to ethnicity, the White student population was more than twice as large (41%), on average, compared to the Latino and Asian/Pacific Islander student populations (14% and 15%, respectively). The fastest growing segment appeared to be the under 18 year old age group followed by the 50 years and older age group. The increase of the under 18 year old age group may be due to the increase of college classes offered at the high schools, while the increase in the 50 years and older age group may be due to the increase of this segmentation within the Continuing Education classes. Approximately half of the Miramar College student population lived outside the San Diego Community College District service area, which remained consistent over the five year reporting period.

*Units Attempted by Units Earned.* Students who enrolled in fewer units were more likely to complete the entire number of units attempted. On average, a majority of those students who attempted between 0.1-5.9 units completed the attempted units, while one-fifth of the students completed zero of 0.1-5.9 units attempted. In contrast, approximately half of those students who attempted greater than 8.9 units actually completed all of the attempted units.

*Persistence.* A majority of the first-time credit college students who completed a fall term persisted and completed the subsequent spring term (61% on average) during the five years reported; 2004 to 2008. Female students persisted at a higher rate than their male student counterpart (65% compared to 58%), while the average persistence rates by ethnicity ranged from 48% to 76%. Younger first-time college credit students persisted at a higher rate than older students (65% for 18-24 years old compared to 46% for 40-49 years old), which is likely due to the fact that the younger students are generally degree or transfer seeking with a longer range education plan than the older students.

*Student Outcomes: Success, Retention, and GPA.* The average successful course completion rate for the Miramar College student population was 68%, the average retention rate was 75%, and the average GPA was 2.89. On average, female students had higher success and retention rates, while male students had higher GPA than their female student counterpart. Student ages 18-24 years old, on average, had moderately high retention rates but the lowest success rates and GPA (81%, 66%, and 2.60, respectively). Since this segment makes up approximately half of the student population, further investigation into this disparity seems warranted so that clarification as to why this segment of the population underperforms in comparison to other age groups. Overall, both Asian/Pacific Islander and White students had the highest success rates. Asian/Pacific Islander

## Miramar College Section VI: Concluding Remarks

---

students also had the highest retention rates and White students had the highest GPA. In contrast, African American students had the lowest success rates and GPA.

*Student Outcomes: Awards Conferred.* On average, 58% of the total awards conferred at Miramar College were associate degrees. Of the total awards conferred at Miramar College, both male (50%) and female (50%) students, on average, received relatively the same number of associate degrees between 2004/05 and 2008/09. From 2004/05 to 2008/09, White students received the most awards across all award categories. Asian/Pacific Islander students had the second highest number of associate degrees and certificates requiring 29 or fewer units conferred. Furthermore, Latino students had the second highest number of certificates requiring 30 to 59 units on average. These trends reflect the fact that these three ethnicities (White, Asian/Pacific Islanders, and Latino students) constitute the greatest proportions of the student headcount population at Miramar College. Approximately two-thirds of the total number of associate degrees and 100% of the certificates requiring 60 or more units awarded between 2004/05 and 2008/09 were to students between ages 18-29 years old on average.

*Student Outcomes: Transfer Volume.* On average, nearly half of the transfers were to the CSU system (47%) followed by UC (22%), Out-of-State institutions (21%), and finally In-State private institutions (10%). The number of students who transferred to a four-year university increased 65% between 2004/05 and 2008/09. The greatest increase was found among the 25-29 year old age group (162%). The Latino student population increased the most in transfer volume (168%), from 19 in 2004/05 to 51 in 2008/09, which may be a direct result of the cluster of classes or Learning Communities at the colleges that focus on student transfer goal.

*Productivity and Efficiency.* Duplicated headcounts/enrollments at Miramar College increased by approximately 16% from 2004 to 2008. Similarly, FTES increased 13% during this same reporting period. Both showed fluctuations each year with a particular surge in enrollment and FTES between 2007/08 and 2008/09. Fill rates also showed marked increases during this period (92% in 2008/09) and Load (WSCH/FTEF) was at an all time high in Spring 2009 (524).

*Human Resources.* There were a total of 785 employees working at Miramar College during Fall 2008. The Filipino and Latino employee populations (2% and 11%, respectively) were underrepresented relative to the Filipino and Latino student populations (10% and 16%, respectively) that Miramar College serves. The White employee population (59%) at Miramar College was overrepresented relative to the White general student population (41%) by approximately one and one half times.