



# **Success and Retention Rates of Online Students**

**2005/06 to 2009/10**

*Prepared by:*

Office of Institutional Research and Planning  
June 2010

City College

Figure 1. Overall City College Online Success Rates

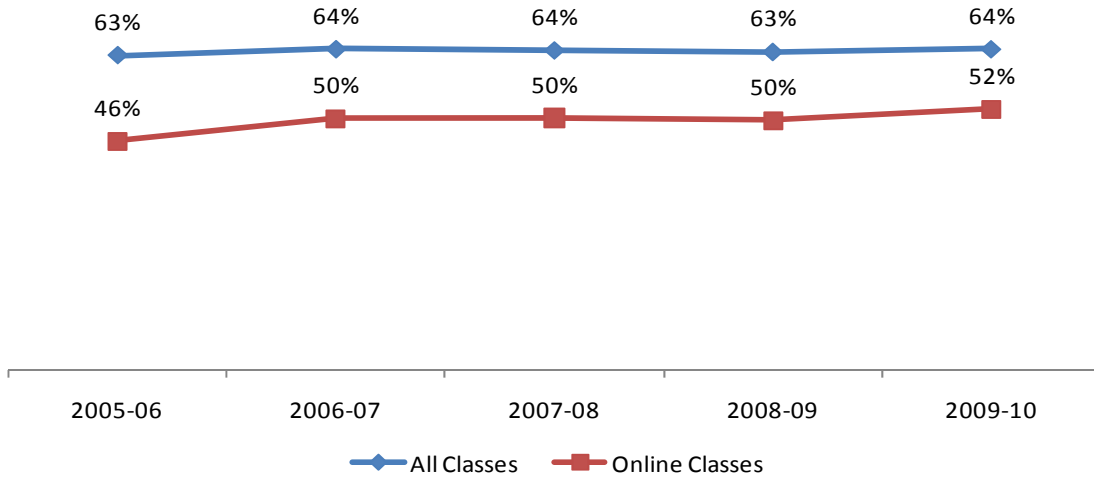


Figure 2. Overall City College Online Retention Rates

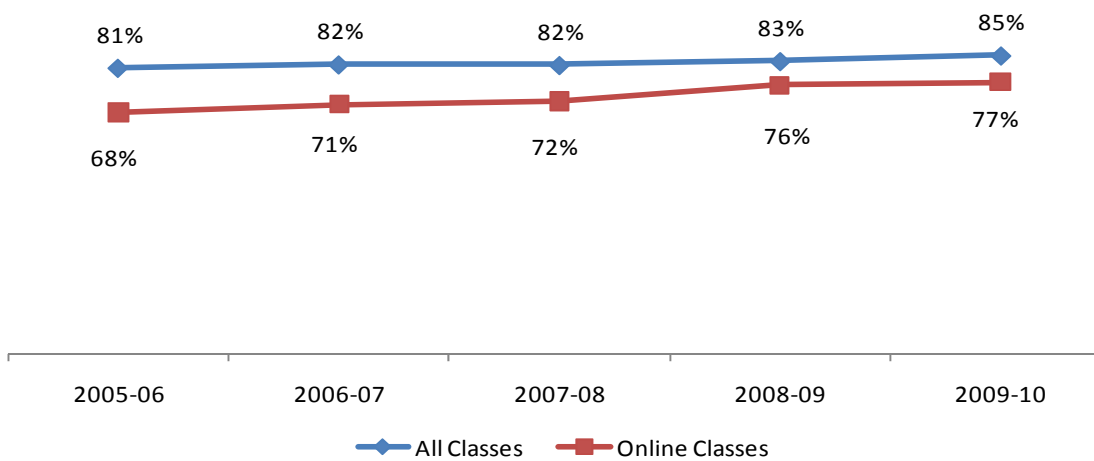


Figure 3. City College Online Success Rates by Gender

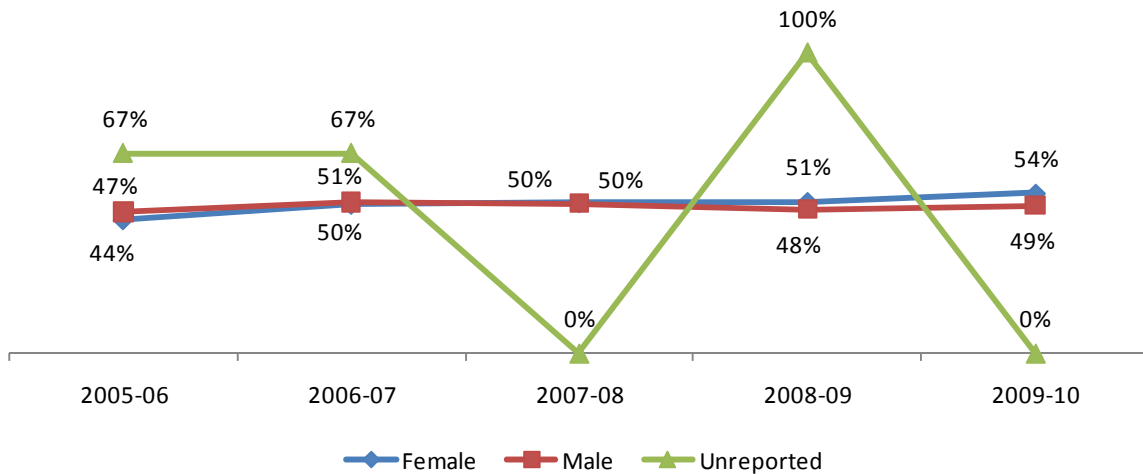


Figure 4. City College Online Retention Rates by Gender

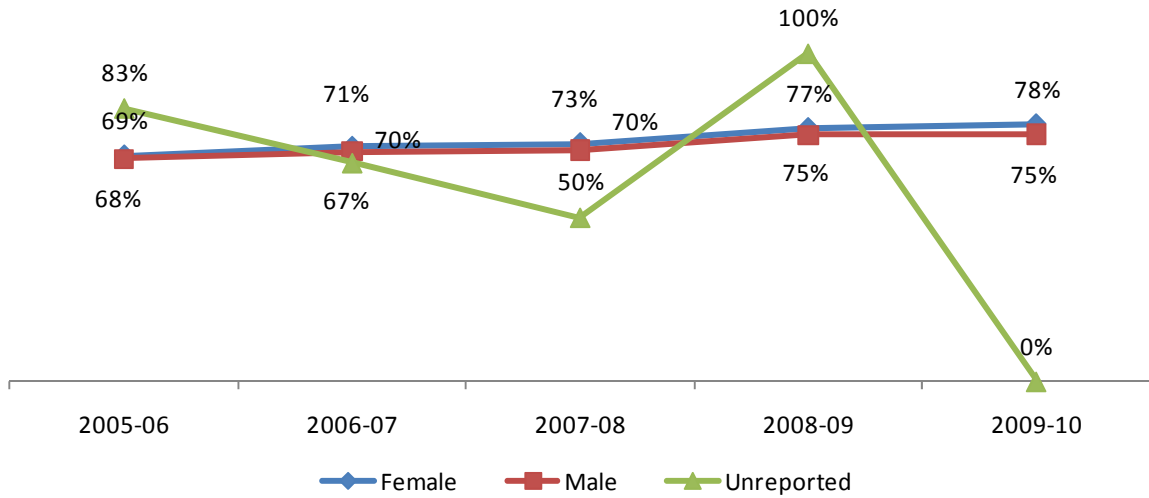


Figure 5. City College Online Success Rates by Ethnicity

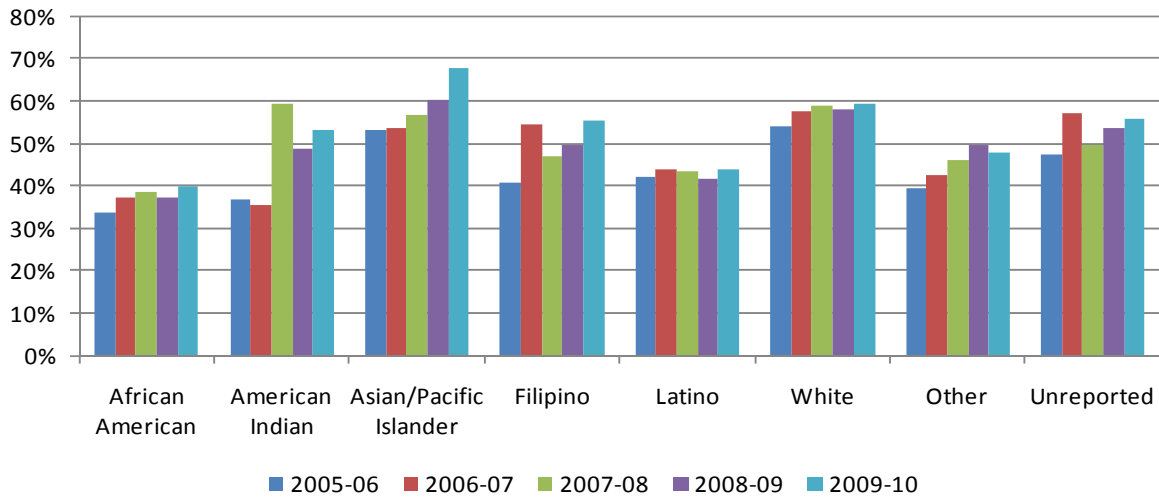
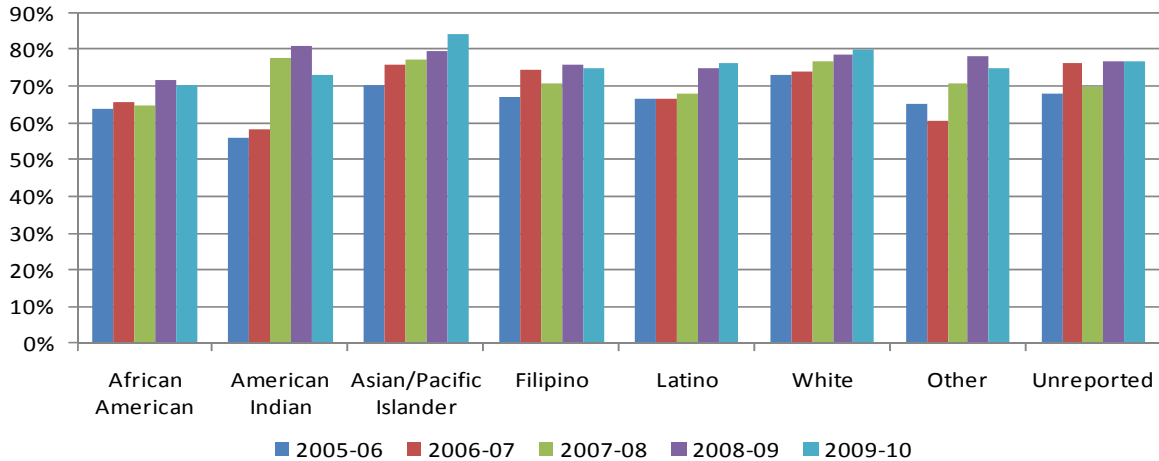


Figure 6. City College Online Retention Rates by Ethnicity



## Success and Retention Rates of Online Students

Table 1. Overall City Online Success Rates

	2005-06	2006-07	2007-08	2008-09	2009-10	% Change 05-10	College Average 05-10	All Colleges Average 05-10
<b>Average</b>	<b>46%</b>	<b>50%</b>	<b>50%</b>	<b>50%</b>	<b>52%</b>	<b>6%</b>	<b>50%</b>	<b>55%</b>

Source: SDCCD Information System

Table 2. Overall City College Online Retention Rates

	2005-06	2006-07	2007-08	2008-09	2009-10	% Change 05-10	College Average 05-10	All Colleges Average 05-10
<b>Average</b>	<b>68%</b>	<b>71%</b>	<b>72%</b>	<b>76%</b>	<b>77%</b>	<b>9%</b>	<b>74%</b>	<b>76%</b>

Source: SDCCD Information System

Table 3. City College Online Success Rates by Gender

	2005-06	2006-07	2007-08	2008-09	2009-10	% Change 05-10	College Average 05-10	All Colleges Average 05-10
Female	44%	50%	50%	51%	54%	10%	50%	56%
Male	47%	51%	50%	48%	49%	2%	49%	53%
Unreported	67%	67%	0%	100%	---	---	---	---
<b>Average</b>	<b>46%</b>	<b>50%</b>	<b>50%</b>	<b>50%</b>	<b>52%</b>	<b>6%</b>	<b>50%</b>	<b>55%</b>

Source: SDCCD Information System

Table 4. City College Online Retention Rates by Gender

	2005-06	2006-07	2007-08	2008-09	2009-10	% Change 05-10	College Average 05-10	All Colleges Average 05-10
Female	69%	71%	73%	77%	78%	9%	74%	77%
Male	68%	70%	70%	75%	75%	7%	72%	75%
Unreported	83%	67%	50%	100%	---	---	---	---
<b>Average</b>	<b>68%</b>	<b>71%</b>	<b>72%</b>	<b>76%</b>	<b>77%</b>	<b>9%</b>	<b>74%</b>	<b>76%</b>

Source: SDCCD Information System

## Success and Retention Rates of Online Students

Table 5. City College Online Success by Ethnicity

	2005-06	2006-07	2007-08	2008-09	2009-10	% Change 05-10	College Average 05-10	All Colleges Average 05-10
African American	34%	37%	39%	37%	40%	6%	38%	40%
American Indian	37%	35%	59%	49%	53%	16%	48%	51%
Asian/Pacific Islander	53%	53%	57%	60%	68%	15%	59%	62%
Filipino	41%	54%	47%	50%	55%	14%	50%	54%
Latino	42%	44%	43%	42%	44%	2%	43%	48%
White	54%	58%	59%	58%	59%	5%	58%	60%
Other	39%	43%	46%	50%	48%	9%	46%	52%
Unreported	47%	57%	50%	54%	56%	9%	53%	56%
<b>Average</b>	<b>46%</b>	<b>50%</b>	<b>50%</b>	<b>50%</b>	<b>52%</b>	<b>6%</b>	<b>50%</b>	<b>55%</b>

Source: SDCCD Information System

Table 6. City College Online Retention Rates by Ethnicity

	2005-06	2006-07	2007-08	2008-09	2009-10	% Change 05-10	College Average 05-10	All Colleges Average 05-10
African American	64%	66%	65%	72%	70%	6%	68%	70%
American Indian	56%	58%	78%	81%	73%	17%	72%	76%
Asian/Pacific Islander	70%	76%	77%	80%	84%	14%	79%	79%
Filipino	67%	75%	71%	76%	75%	8%	73%	75%
Latino	66%	67%	68%	75%	76%	10%	72%	74%
White	73%	74%	77%	78%	80%	7%	77%	78%
Other	65%	61%	71%	78%	75%	10%	72%	75%
Unreported	68%	76%	70%	77%	77%	9%	74%	76%
<b>Average</b>	<b>68%</b>	<b>71%</b>	<b>72%</b>	<b>76%</b>	<b>77%</b>	<b>9%</b>	<b>74%</b>	<b>76%</b>

Source: SDCCD Information System

Mesa College

Figure 7. Overall Mesa College Online Success Rates

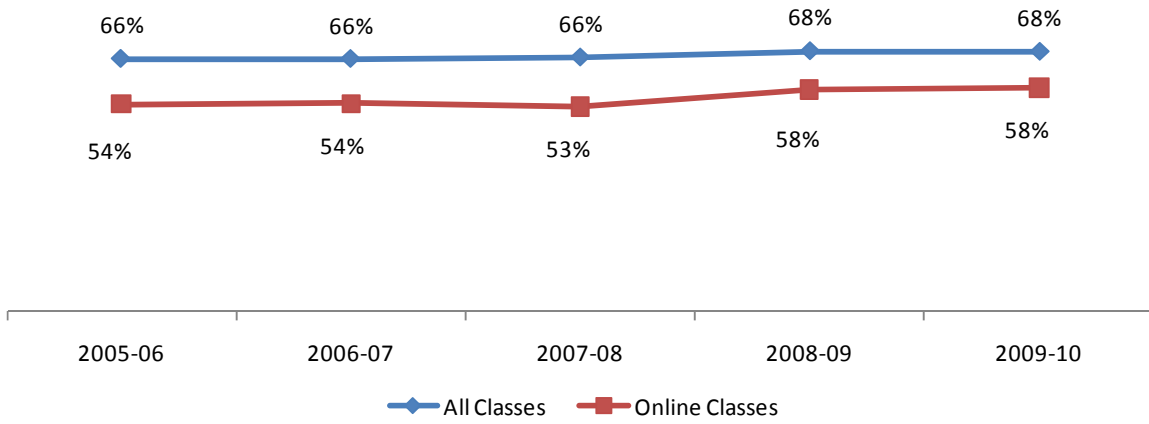


Figure 8. Overall Mesa College Online Retention Rates

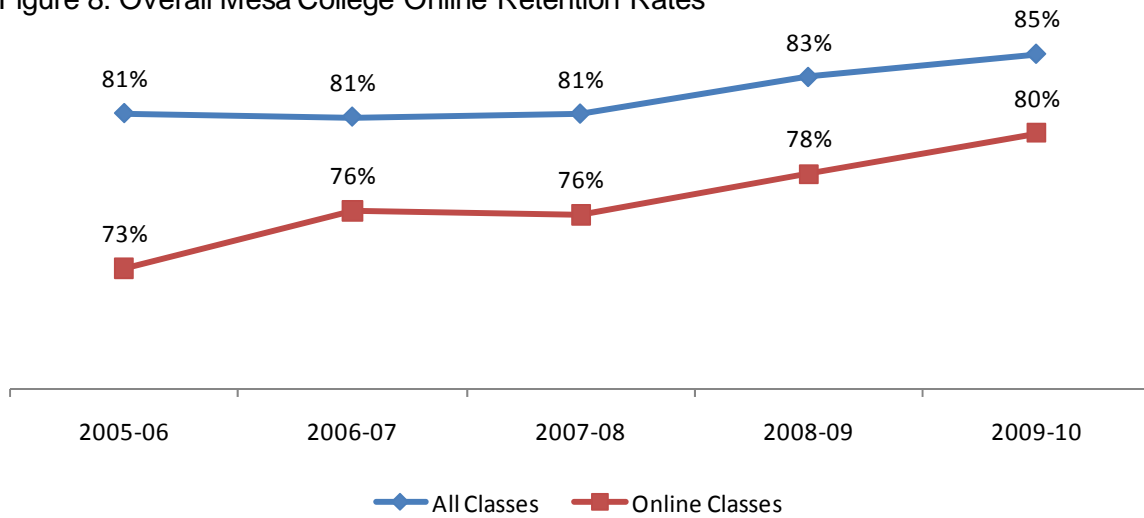
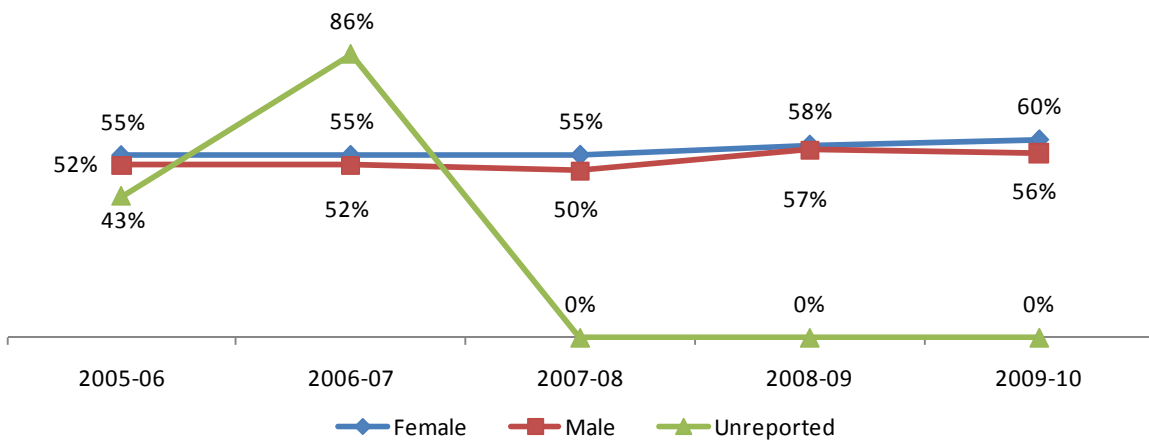


Figure 9. Mesa College Online Success Rates by Gender



## Success and Retention Rates of Online Students

Figure 10. Mesa College Online Retention Rates by Gender

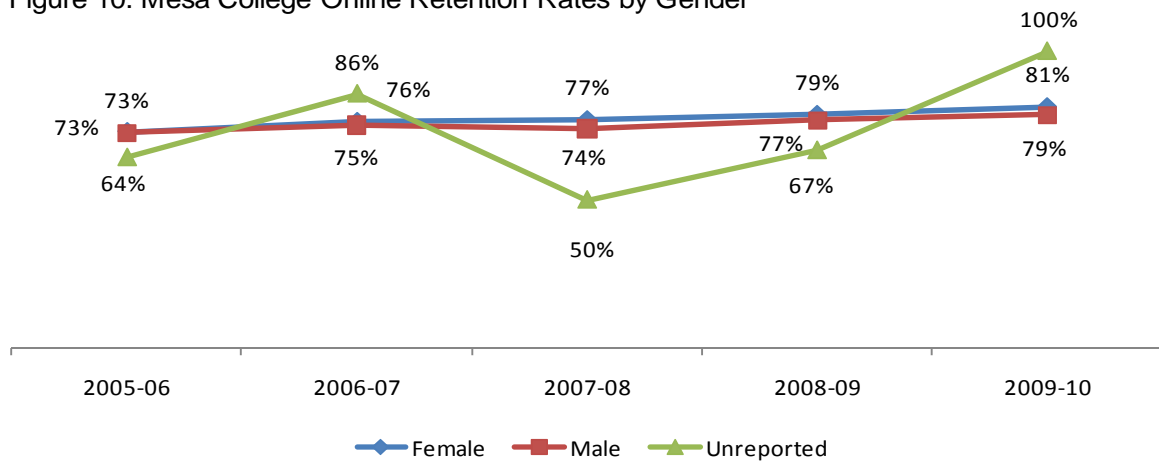


Figure 11. Mesa College Online Success Rates by Ethnicity

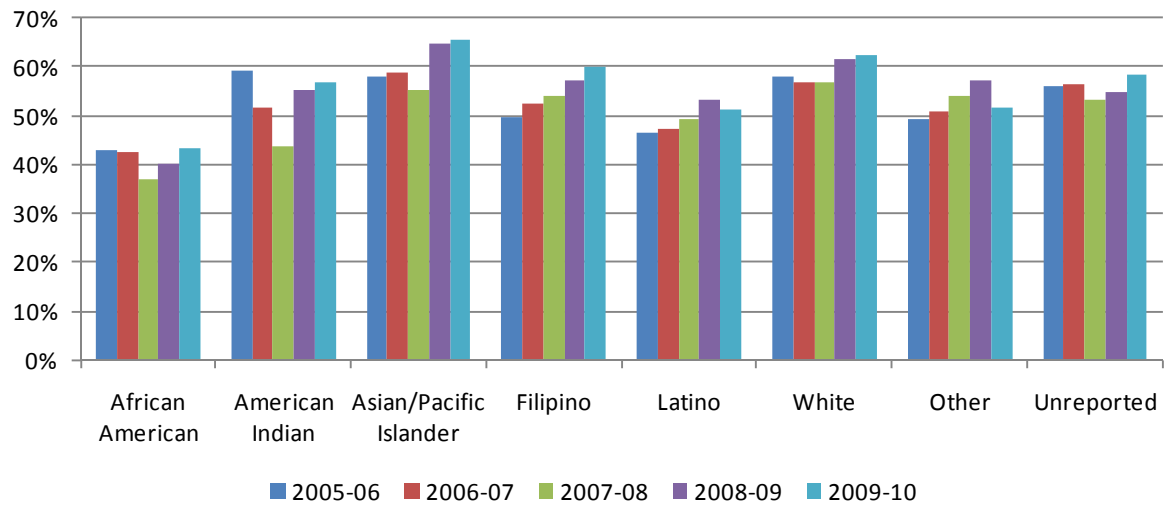
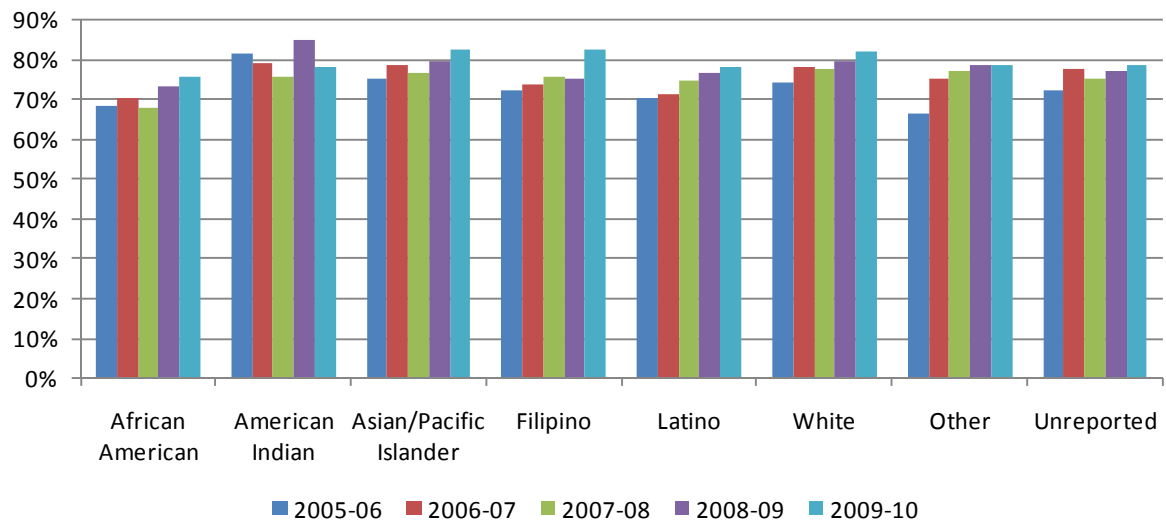


Figure 12. Mesa College Online Retention Rates by Ethnicity



## Success and Retention Rates of Online Students

Table 7. Overall Mesa Online Success Rates

	2005-06	2006-07	2007-08	2008-09	2009-10	% Change 05-10	College Average 05-10	All Colleges Average 05-10
<b>Average</b>	54%	54%	53%	58%	58%	4%	56%	55%

Source: SDCCD Information System

Table 8. Overall Mesa College Online Retention Rates

	2005-06	2006-07	2007-08	2008-09	2009-10	% Change 05-10	College Average 05-10	All Colleges Average 05-10
<b>Average</b>	73%	76%	76%	78%	80%	7%	77%	76%

Source: SDCCD Information System

Table 9. Mesa College Online Success Rates by Gender

	2005-06	2006-07	2007-08	2008-09	2009-10	% Change 05-10	College Average 05-10	All Colleges Average 05-10
Female	55%	55%	55%	58%	60%	5%	57%	56%
Male	52%	52%	50%	57%	56%	4%	54%	53%
Unreported	43%	86%	0%	0%	0%	-43%	44%	56%
<b>Average</b>	54%	54%	53%	58%	58%	4%	56%	55%

Source: SDCCD Information System

Table 10. Mesa College Online Retention Rates by Gender

	2005-06	2006-07	2007-08	2008-09	2009-10	% Change 05-10	College Average 05-10	All Colleges Average 05-10
Female	73%	76%	77%	79%	81%	8%	78%	77%
Male	73%	75%	74%	77%	79%	6%	76%	75%
Unreported	64%	86%	50%	67%	100%	36%	70%	73%
<b>Average</b>	73%	76%	76%	78%	80%	7%	77%	76%

Source: SDCCD Information System



## Success and Retention Rates of Online Students

Table 11. Mesa College Online Success by Ethnicity

	2005-06	2006-07	2007-08	2008-09	2009-10	% Change 05-10	College Average 05-10	All Colleges Average 05-10
African American	43%	43%	37%	40%	43%	0%	41%	40%
American Indian	59%	52%	44%	55%	57%	-2%	53%	51%
Asian/Pacific Islander	58%	59%	55%	65%	66%	8%	61%	62%
Filipino	50%	52%	54%	57%	60%	10%	56%	54%
Latino	46%	47%	49%	53%	51%	5%	50%	48%
White	58%	57%	57%	61%	62%	4%	59%	60%
Other	49%	51%	54%	57%	52%	3%	53%	52%
Unreported	56%	56%	53%	55%	58%	2%	56%	56%
<b>Average</b>	<b>54%</b>	<b>54%</b>	<b>53%</b>	<b>58%</b>	<b>58%</b>	<b>4%</b>	<b>56%</b>	<b>55%</b>

Source: SDCCD Information System

Table 12. Mesa College Online Retention Rates by Ethnicity

	2005-06	2006-07	2007-08	2008-09	2009-10	% Change 05-10	College Average 05-10	All Colleges Average 05-10
African American	68%	71%	68%	73%	76%	8%	72%	70%
American Indian	82%	79%	76%	85%	78%	-4%	80%	76%
Asian/Pacific Islander	75%	78%	77%	79%	83%	8%	79%	79%
Filipino	72%	74%	76%	75%	83%	11%	77%	75%
Latino	70%	71%	74%	76%	78%	8%	75%	74%
White	74%	78%	77%	80%	82%	8%	79%	78%
Other	66%	75%	77%	78%	78%	12%	76%	75%
Unreported	72%	78%	75%	77%	79%	7%	77%	76%
<b>Average</b>	<b>73%</b>	<b>76%</b>	<b>76%</b>	<b>78%</b>	<b>80%</b>	<b>7%</b>	<b>77%</b>	<b>76%</b>

Source: SDCCD Information System

Miramar College

Figure 13. Overall Miramar College Online Success Rates

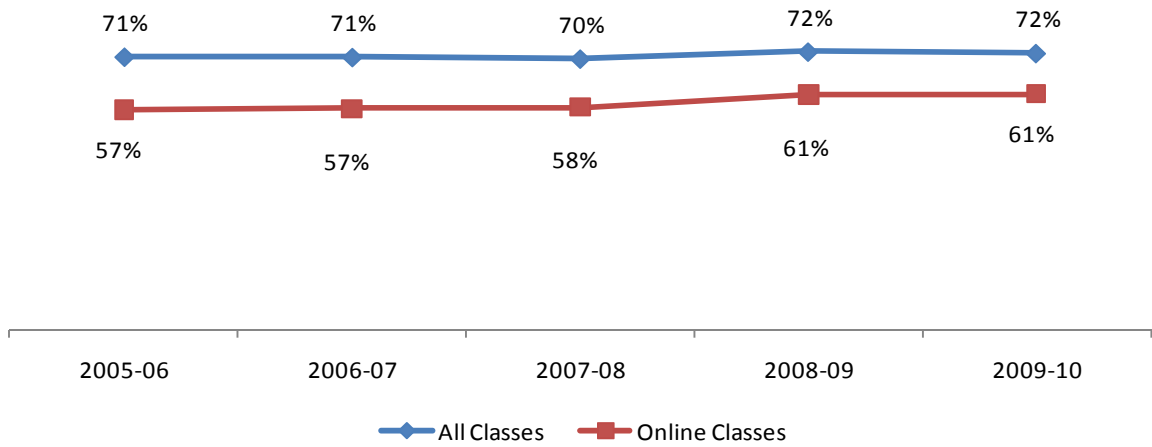


Figure 14. Overall Miramar College Online Retention Rates

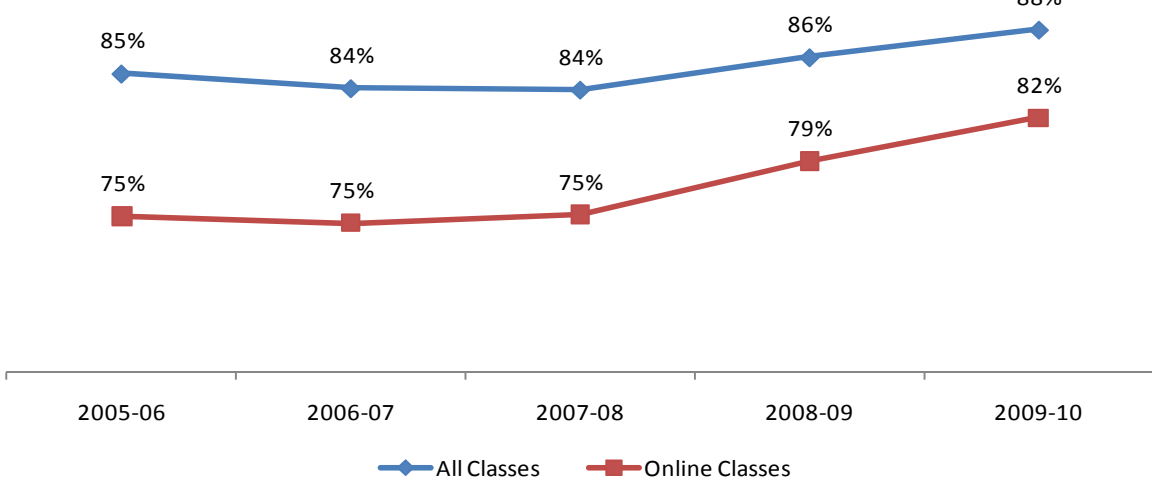
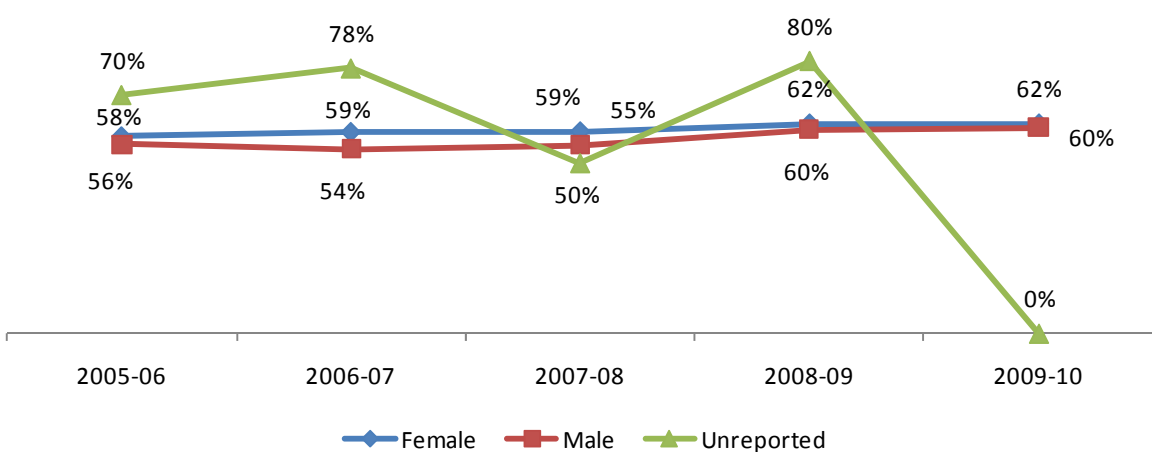


Figure 15. Miramar College Online Success Rates by Gender



## Success and Retention Rates of Online Students

Figure 16. Miramar College Online Retention Rates by Gender

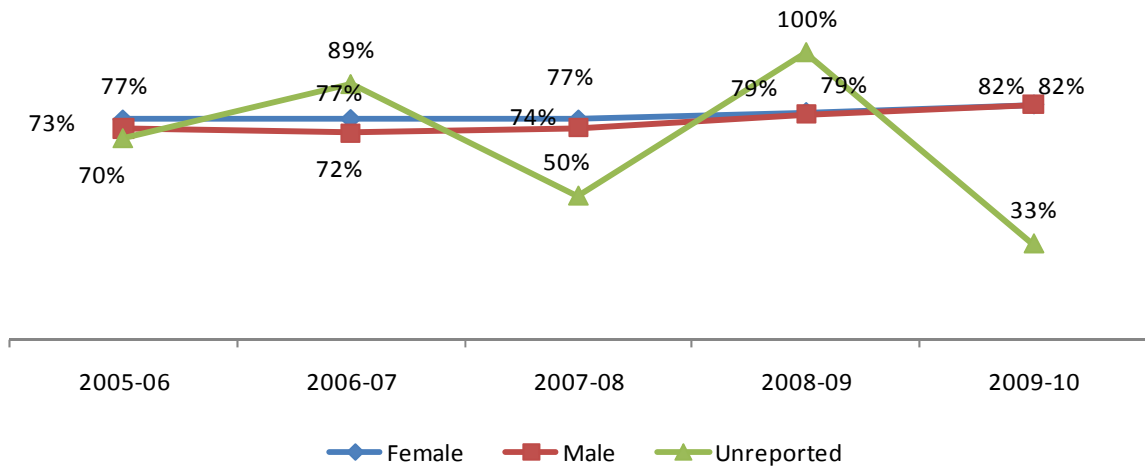


Figure 17. Miramar College Online Success Rates by Ethnicity

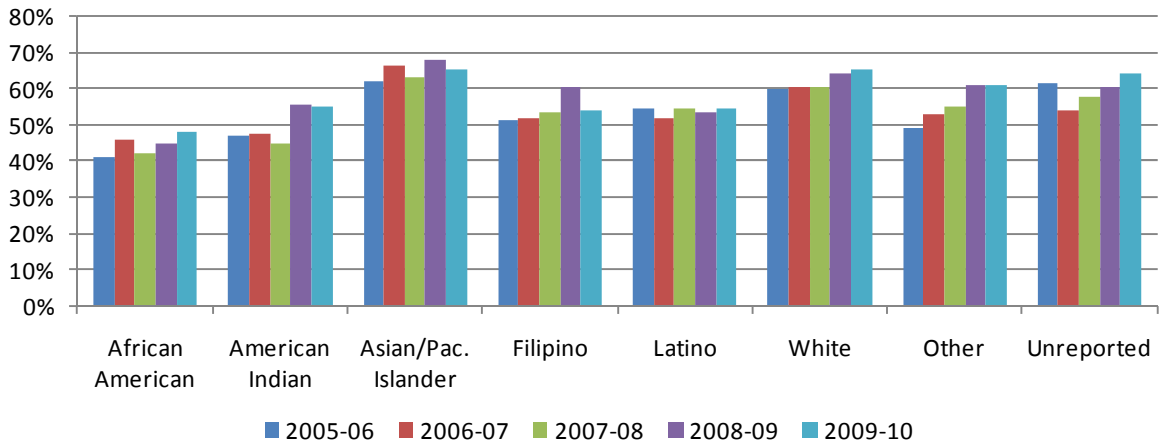
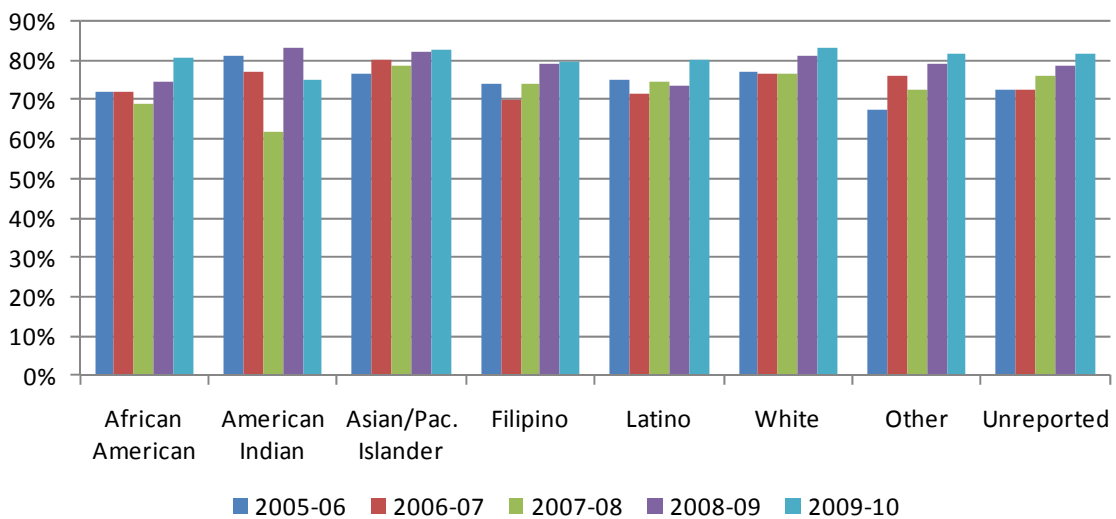


Figure 18. Miramar College Online Retention Rates by Ethnicity



## Success and Retention Rates of Online Students

**Table 13. Overall Miramar College Online Success Rates**

	2005-06	2006-07	2007-08	2008-09	2009-10	% Change 05-10	College Average 05-10	All Colleges Average 05-10
<b>Average</b>	57%	57%	58%	61%	61%	4%	59%	55%

Source: SDCCD Information System

Note: Success & retention rates of academy courses were included in this report whereas last year's report excluded them.

**Table 14. Overall Miramar College Online Retention Rates**

	2005-06	2006-07	2007-08	2008-09	2009-10	% Change 05-10	College Average 05-10	All Colleges Average 05-10
<b>Average</b>	75%	75%	75%	79%	82%	7%	78%	76%

Source: SDCCD Information System

**Table 15. Miramar College Online Success Rates by Gender**

	2005-06	2006-07	2007-08	2008-09	2009-10	% Change 05-10	College Average 05-10	All Colleges Average 05-10
Female	58%	59%	59%	62%	62%	4%	60%	56%
Male	56%	54%	55%	60%	61%	5%	58%	53%
Unreported	70%	78%	50%	80%	0%	-70%	65%	56%
<b>Average</b>	57%	57%	58%	61%	61%	4%	59%	55%

Source: SDCCD Information System

**Table 16. Miramar College Online Retention Rates by Gender**

	2005-06	2006-07	2007-08	2008-09	2009-10	% Change 05-10	College Average 05-10	All Colleges Average 05-10
Female	77%	77%	77%	79%	82%	5%	79%	77%
Male	73%	72%	74%	79%	82%	9%	77%	75%
Unreported	70%	89%	50%	100%	33%	-37%	74%	73%
<b>Average</b>	75%	75%	75%	79%	82%	7%	78%	76%

Source: SDCCD Information System

## Success and Retention Rates of Online Students

Table 17. Miramar College Online Success by Ethnicity

	2005-06	2006-07	2007-08	2008-09	2009-10	% Change 05-10	College Average 05-10	All Colleges Average 05-10
African American	41%	46%	42%	45%	48%	7%	45%	40%
American Indian	47%	48%	45%	55%	55%	8%	51%	51%
Asian/Pacific Islander	62%	66%	63%	68%	66%	4%	65%	62%
Filipino	51%	52%	54%	60%	54%	3%	54%	54%
Latino	55%	52%	54%	53%	55%	0%	54%	48%
White	60%	60%	61%	64%	65%	5%	62%	60%
Other	49%	53%	55%	61%	61%	12%	57%	52%
Unreported	61%	54%	58%	61%	64%	3%	60%	56%
<b>Average</b>	<b>57%</b>	<b>57%</b>	<b>58%</b>	<b>61%</b>	<b>61%</b>	<b>4%</b>	<b>59%</b>	<b>55%</b>

Source: SDCCD Information System

Table 18. Miramar College Online Retention Rates by Ethnicity

	2005-06	2006-07	2007-08	2008-09	2009-10	% Change 05-10	College Average 05-10	All Colleges Average 05-10
African American	72%	72%	69%	75%	80%	8%	74%	70%
American Indian	81%	77%	62%	83%	75%	-6%	76%	76%
Asian/Pacific Islander	76%	80%	79%	82%	83%	7%	80%	79%
Filipino	74%	70%	74%	79%	79%	5%	75%	75%
Latino	75%	71%	75%	74%	80%	5%	75%	74%
White	77%	76%	76%	81%	83%	6%	79%	78%
Other	67%	76%	72%	79%	82%	15%	77%	75%
Unreported	72%	73%	76%	79%	81%	9%	77%	76%
<b>Average</b>	<b>75%</b>	<b>75%</b>	<b>75%</b>	<b>79%</b>	<b>82%</b>	<b>7%</b>	<b>78%</b>	<b>76%</b>

Source: SDCCD Information System

All Colleges

Figure 19. Overall All Colleges Online Success Rates

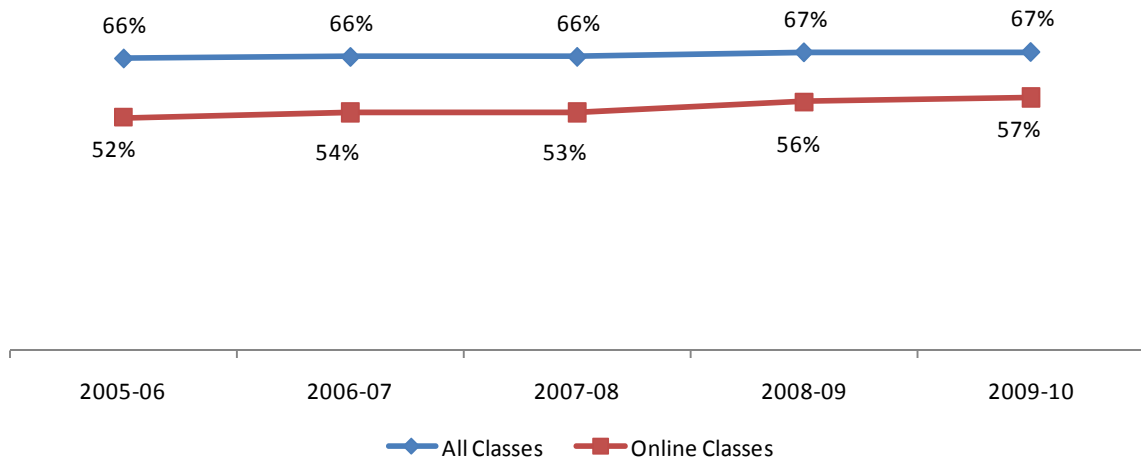


Figure 20. Overall All Colleges Online Retention Rates

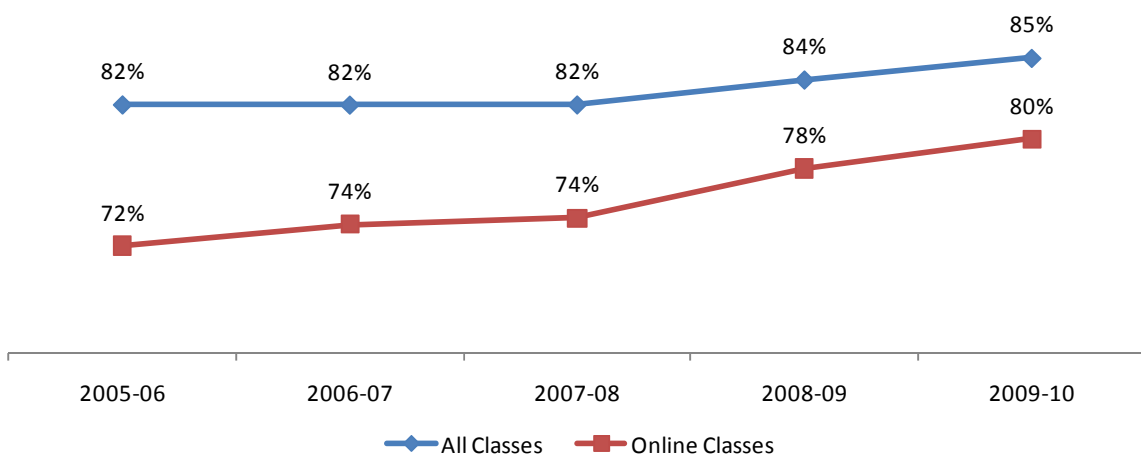


Figure 21. All Colleges Online Success Rates by Gender

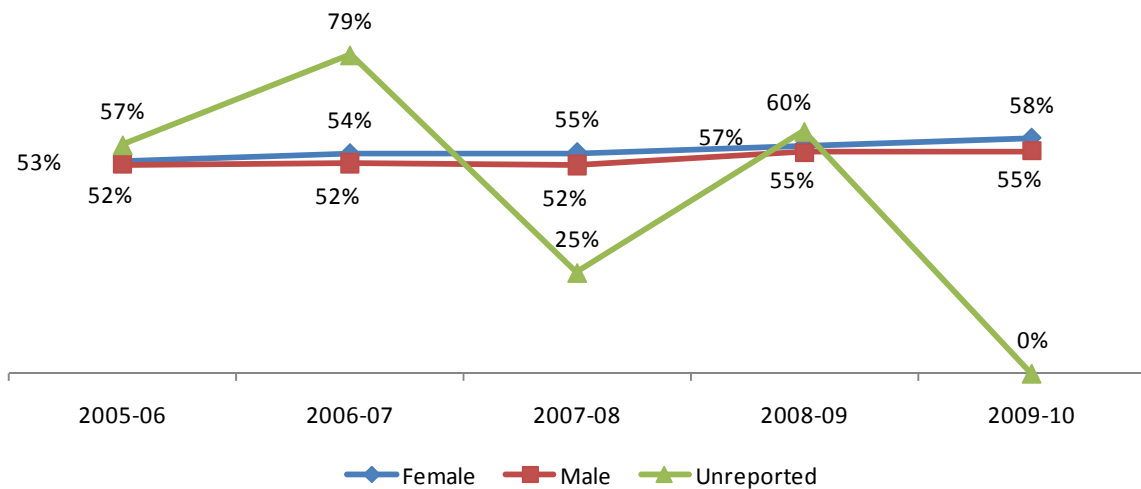


Figure 22. All Colleges Online Retention Rates by Gender

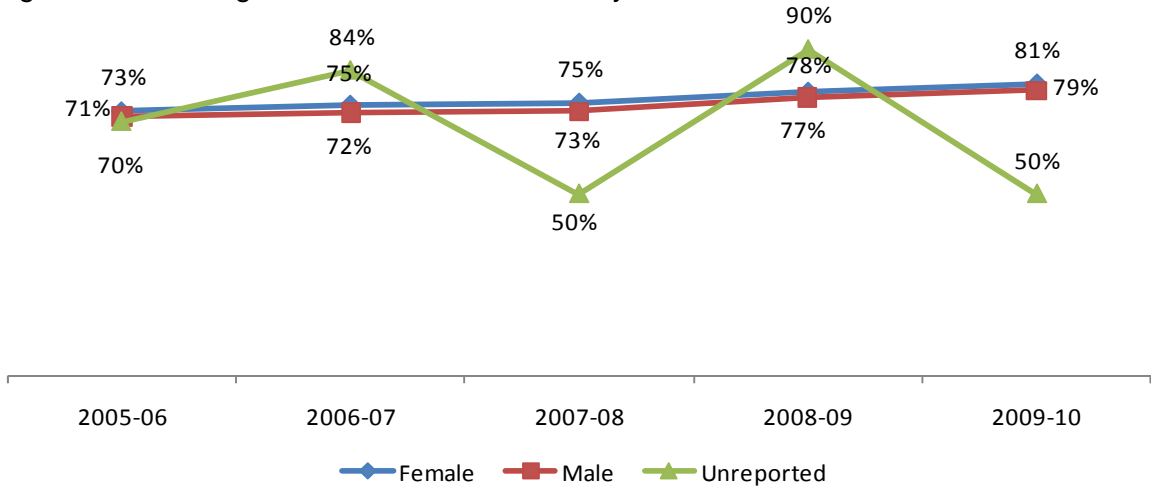


Figure 23. All Colleges Online Success Rates by Ethnicity

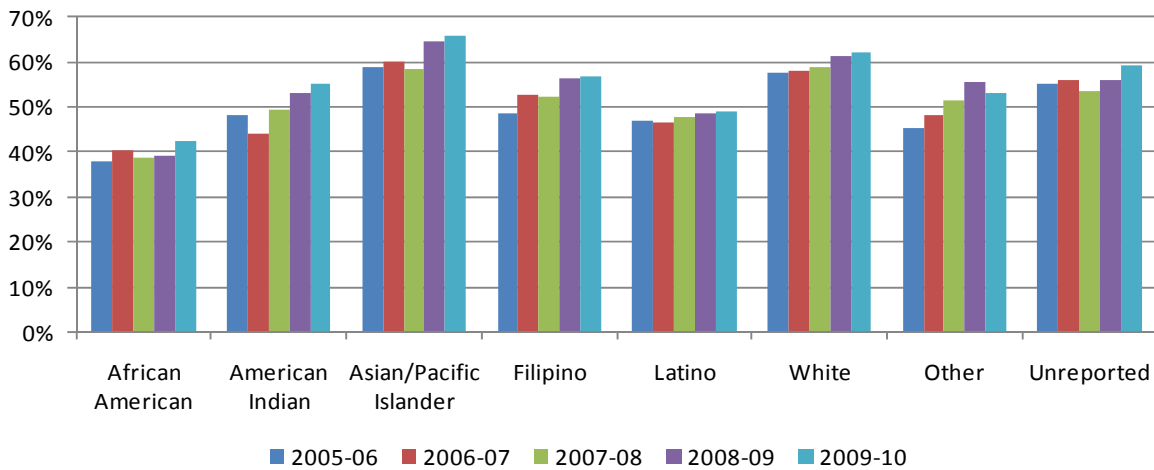
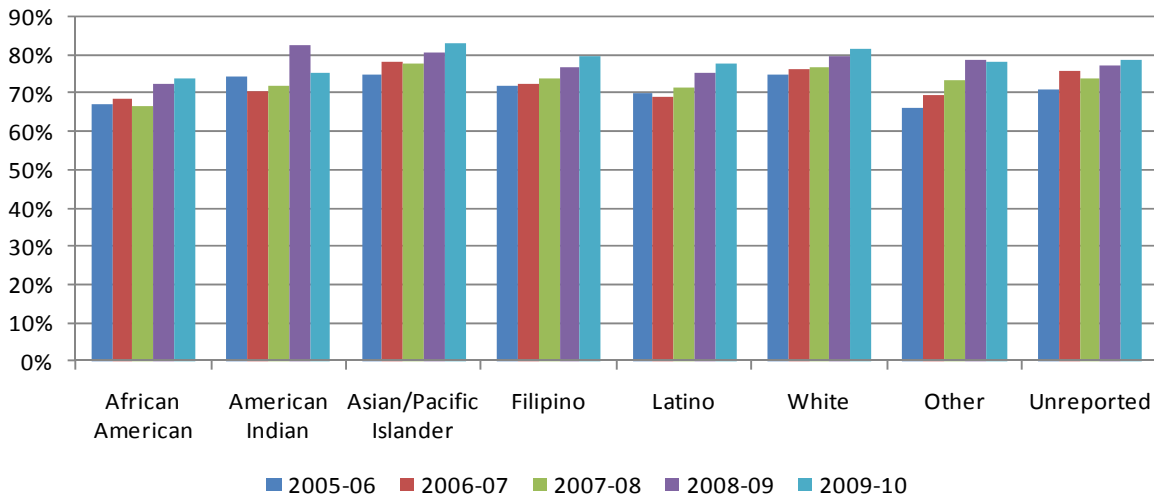


Figure 24. All Colleges Online Retention Rates by Ethnicity



## Success and Retention Rates of Online Students

Table 19. Overall All Colleges Online Success Rates

	2005-06	2006-07	2007-08	2008-09	2009-10	% Change 05-10	All Colleges Average 05-10
<b>Average</b>	<b>52%</b>	<b>54%</b>	<b>53%</b>	<b>56%</b>	<b>57%</b>	<b>5%</b>	<b>55%</b>

Source: SDCCD Information System

Table 20. Overall All Colleges Online Retention Rates

	2005-06	2006-07	2007-08	2008-09	2009-10	% Change 05-10	All Colleges Average 05-10
<b>Average</b>	<b>72%</b>	<b>74%</b>	<b>74%</b>	<b>78%</b>	<b>80%</b>	<b>7%</b>	<b>76%</b>

Source: SDCCD Information System

Table 21. All Colleges Online Success Rates by Gender

	2005-06	2006-07	2007-08	2008-09	2009-10	% Change 05-10	All Colleges Average 05-10
Female	53%	54%	55%	57%	58%	5%	56%
Male	52%	52%	52%	55%	55%	3%	53%
Unreported	57%	79%	25%	60%	0%	-57%	56%
<b>Average</b>	<b>52%</b>	<b>54%</b>	<b>53%</b>	<b>56%</b>	<b>57%</b>	<b>5%</b>	<b>55%</b>

Source: SDCCD Information System

Table 22. All Colleges Online Retention Rates by Gender

	2005-06	2006-07	2007-08	2008-09	2009-10	% Change 05-10	All Colleges Average 05-10
Female	73%	75%	75%	78%	81%	8%	77%
Male	71%	72%	73%	77%	79%	7%	75%
Unreported	70%	84%	50%	90%	50%	-20%	73%
<b>Average</b>	<b>72%</b>	<b>74%</b>	<b>74%</b>	<b>78%</b>	<b>80%</b>	<b>7%</b>	<b>76%</b>

Source: SDCCD Information System



## Success and Retention Rates of Online Students

Table 23. All Colleges Online Success by Ethnicity

	2005-06	2006-07	2007-08	2008-09	2009-10	% Change 05-10	All Colleges Average 05-10
African American	38%	40%	39%	39%	43%	5%	40%
American Indian	48%	44%	49%	53%	55%	7%	51%
Asian/Pacific Islander	59%	60%	58%	65%	66%	7%	62%
Filipino	48%	53%	52%	56%	57%	8%	54%
Latino	47%	47%	48%	48%	49%	2%	48%
White	58%	58%	59%	61%	62%	4%	60%
Other	45%	48%	51%	56%	53%	8%	52%
Unreported	55%	56%	54%	56%	59%	4%	56%
<b>Average</b>	<b>52%</b>	<b>54%</b>	<b>53%</b>	<b>56%</b>	<b>57%</b>	<b>5%</b>	<b>55%</b>

Source: SDCCD Information System

Table 24. All Colleges Online Retention Rates by Ethnicity

	2005-06	2006-07	2007-08	2008-09	2009-10	% Change 05-10	All Colleges Average 05-10
African American	67%	68%	66%	73%	74%	7%	70%
American Indian	74%	70%	72%	83%	75%	1%	76%
Asian/Pacific Islander	75%	78%	78%	80%	83%	8%	79%
Filipino	72%	72%	74%	77%	80%	8%	75%
Latino	70%	69%	72%	75%	78%	8%	74%
White	75%	76%	77%	80%	82%	7%	78%
Other	66%	70%	73%	79%	78%	12%	75%
Unreported	71%	76%	74%	77%	79%	8%	76%
<b>Average</b>	<b>72%</b>	<b>74%</b>	<b>74%</b>	<b>78%</b>	<b>80%</b>	<b>7%</b>	<b>76%</b>

Source: SDCCD Information System